



Koninklijk Nederlands
Meteorologisch Instituut
Ministerie van Verkeer en Waterstaat

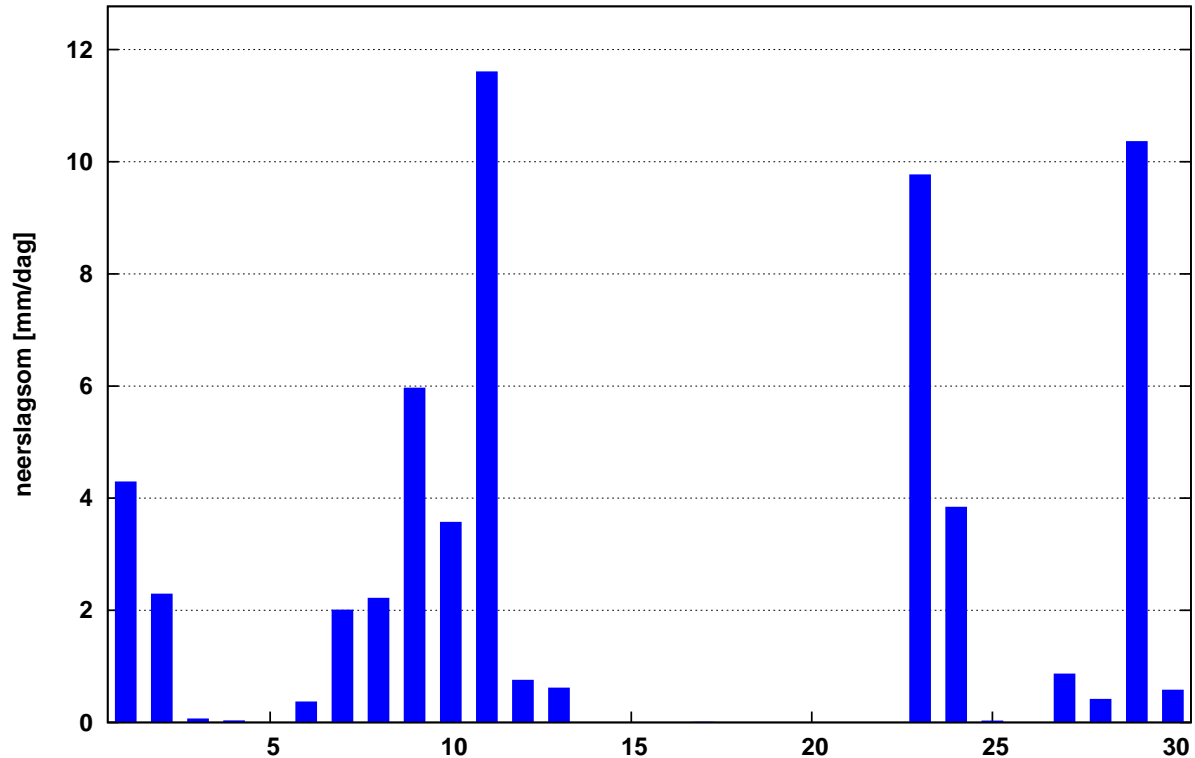
Maandoverzicht neerslag en verdamping in Nederland

september 2003



Landelijk gemiddelde dagelijkse neerslagsom september 2003 (gebaseerd op 326 stations)

Maandsom: 60 mm Normaal: 75 mm



In het Maandoverzicht neerslag en verdamping in Nederland (MONV) zijn dagelijkse gegevens van neerslag, verdamping, potentieel neerslagoverschot en sneeuwdagen opgenomen. Daarnaast worden decade- en maandwaarden vermeld. De metingen worden verricht op ca. 325 KNMI-neerslagstations en 25 KNMI meteorologische stations, alwaar uit metingen van temperatuur en straling de referentie-gewasverdamping wordt berekend. Het MONV is ruim 75 jaar uitgegeven als KNMI-periodiek en wordt sinds 2009 verspreid via internet (<http://www.knmi.nl/klimatologie/monv>).

KNMI
Klimaatdata en -advies
Postbus 201
3730 AE De Bilt
e-mail: Klimaatdesk@knmi.nl

SEPTEMBER 2003

NEERSLAG 8-8 UUR (MM)

DISTRICT 1														DISTRICT 2								
NR	10	11	12	15	16	17	18	19	21	22	24	25	26	61	64	65	66	67	68	69		
DAG	W.TER HOL LUM	SCHIER LING	SCHIER MONNIK OOG	OOST VLIE LAND	PETTEN	DEN BURG	NES AME LAND	DE COCKS DORP	CAL LANTS OOG	DE KOOG	VLIE LAND	DE KOOY	FOR MERUM	SKRINS	SNEEK	MAK KUM	HAR LINGEN	DOK KUM	ST ANNA PAR.	APPEL SCHA		
1	5.7	3.1	2.8	6.9	5.7	2.4	12.6	4.3	11.0	4.7	4.3	6.2	2.4	2.2	4.0	2.8	3.7	16.9	4.5	2.3		
2	2.8	0.5	2.7	2.4	3.7	2.4	2.6	4.9	1.3	0.5	0.3	5.0	4.3	6.0	4.4	0.1	1.5	0.4	1.9	1.2		
3	0.8	0.4	3.1	.	.	.	0.1	0.4	.	.	0.1	.	.	0.1	.	.		
4	0.2	0.9	.	0.5	0.6	0.5	0.8	.		
5	0.2		
6	0.6	0.3	0.3	0.5	0.9	0.6	1.0	0.5	0.3	0.8	0.6		
7	2.5	0.6	0.9	.	.	.	1.3	0.3	4.1	1.9	2.1	0.4	0.6	1.8	0.3		
8	0.5	.	0.4	.	3.7	0.3	0.3	.	2.3	0.4	0.1	2.3		
9	3.8	0.1	31.8	.	0.5	9.4	5.6	6.1	2.4	.	0.1	1.6	1.3	0.8	1.0	0.2	.	18.5	2.7	13.5		
10	1.4	8.6	0.2	4.8	12.4	5.7	1.3	1.7	3.9	2.5	4.1	3.5	6.3	.	.	0.2	.	1.0	5.0	0.5		
11	10.7	1.6	0.7	3.0	9.8	8.1	2.6	4.2	8.7	8.2	4.3	5.0*	1.6	1.1	1.3	0.8	5.7	2.5	2.7	3.3		
12	.	0.2	0.4	.	.	.	0.4	.	0.4	0.4	0.2	.	.	0.5	0.3	1.3		
13	.	0.3	0.1	.	.	0.5	.	0.1	.	.	0.1	1.2	.	.	0.4	.	.	.	0.4	.		
14		
15		
16	0.1	.	.	0.1		
17	0.2	.	.	0.1	0.1		
18		
19		
20	0.1		
21		
22		
23	5.8	2.8	8.8	2.5	5.3	2.1	6.2	3.6	3.7	4.4	2.7	3.4	3.8	7.5	13.5	4.7	2.9	10.2	8.1	11.0		
24	6.5	3.3	4.4	2.0	1.5	2.9	4.7	3.9	2.4	3.7	2.8	2.2	3.1	0.6	6.5	5.0	3.2	8.0	5.4	1.6		
25	0.9	0.2	0.2	0.4	.	.		
26		
27	3.5	1.9	2.1	2.0	1.3	2.8	2.9	2.0	1.8	1.5	2.0	2.4	2.6	1.6	4.4	3.7	1.5	1.7	1.5	0.4		
28	0.2	.	.	.	0.2	1.0	0.6	3.2	.	2.2	2.0	.	.	.	0.1	0.1	.	2.5	0.2	.		
29	12.4	11.1	21.0	10.6	12.9	6.2	11.6	6.4	15.0	9.0	9.2	8.2	11.9	30.2	19.8	9.7	15.9	17.6	20.7	22.2		
30	1.1	2.7	0.6	1.9	0.2	2.6	6.0	1.7	.	2.2	8.5	0.3	2.5	5.7	0.8	1.1	1.4	0.9	0.8	.		
I	18.5	14.5	41.9	14.6	26.0	20.2	24.1	17.0	20.9	7.7	8.8	16.7	15.7	14.5	12.0	6.4	6.1	38.2	17.6	20.7		
NORM	26.3	27.4	24.6	25.5	26.2	25.4	26.4	28.0	27.0	26.6	25.8	25.4	.	.	24.7	22.8	25.4	26.7	25.0	24.6		
II	10.7	2.1	1.2	3.0	10.2	8.6	3.0	4.5	9.1	8.2	4.4	6.2*	1.6	1.5	2.0	0.8	5.7	3.0	3.4	4.6		
NORM	27.7	28.1	31.0	29.1	33.7	32.4	27.3	28.9	32.0	32.6	29.1	30.7	.	28.8	25.7	26.5	26.5	28.1	27.2	26.5		
III	30.4	21.8	36.9	19.0	21.4	17.6	32.2	21.0	22.9	23.0	27.2	16.5	23.9	45.6	45.1	24.3	24.9	41.3	36.7	35.2		
NORM	31.0	33.4	27.4	33.2	27.9	32.9	32.5	36.2	31.5	36.8	32.9	31.1	.	26.9	28.3	28.7	28.7	30.1	32.1	24.2		
MND	59.6	38.4	80.0	36.6	57.6	46.4	59.3	42.5	52.9	38.9	40.4	39.4	41.2	61.6	59.1	31.5	36.7	82.5	57.7	60.5		
NORM	85.0	88.9	83.0	87.8	87.8	90.7	86.2	93.1	90.6	96.0	87.8	87.2	.	80.4	76.8	80.6	80.6	85.0	84.3	75.3		
DISTRICT 2																						
NR	70	73	75	76	77	78	79	80	81	82	84	85	86	87	89	90	91	166	171	326	338	
DAG	OUDE MIRDUM	DRACH TEN	OLDE HOLT PADE	KORN WERDER ZAND	KOLLUM	HER BAYUM	HEEG	STA VOREN	JOURE	GORRE DIJK	EZUMA ZIJL	LEEU WARDEN	NIJ BEETS	BER GUMER DAM	AK KRUM	EERNE WOUDE	TER NAARD	MARUM	AN JUM	FREDE RIKS OORD	GIET HOORN	
1	3.0	3.1	4.0	8.9	12.5	4.5	7.5	2.1	3.4	1.1	21.4	3.9	2.4	4.3	3.2	3.3	15.2	3.5	15.9	3.0*	5.2	
2	0.5	5.1	0.6	0.4	3.2	1.5	0.5	0.8	2.0	1.7	4.1	1.8	1.0	2.4	0.8	1.4	1.0	3.1	2.2	0.4	1.0	
3	.	0.1	0.1	.	
4	.	0.3	.	.	.	0.1	1.1	
5	
6	.	0.6	0.7	1.0	0.5	0.7	0.5	0.3	0.4	0.4	0.7	0.6	0.8	0.6	0.6	0.7	0.3	0.5	0.4	0.6	0.5	
7	2.5	4.0	1.1	0.6	0.9	1.9	2.0	4.8	0.4	4.3	0.8	2.5	4.5	0.3	0.5	0.7	0.3	1.6	0.6	1.3	1.3	
8	.	1.3	1.2	.	0.6	1.4	.	.	1.1	0.8	.	0.7	0.3	1.3	0.3	2.4	1.8	
9	0.4	9.3	2.9	0.2	28.7	1.0	1.0	1.6	1.5	2.8	18.6	1.5	3.0	4.8	1.5	2.5	10.0	24.3	16.4	4.2	1.7	
10	3.4	1.3	0.2	0.2	.	.	.	1.1	.	2.2	0.2	.	1.5	0.5	.	0.4	0.5	.	0.2	0.3	0.9	
11	0.7	3.4	2.3	0.5	2.2	1.6	1.5	1.5	3.9	3.1	3.0	5.3	1.4	1.0	2.2	1.2	1.5	10.1	1.7	4.6	4.6	
12	0.1	0.8	.	.	1.6	.	0.2	.	.	0.5	2.5	0.8	0.2	1.5	0.3	0.4	0.6	0.3	1.7	1.6	0.2	
13	.	0.2	0.2	.	0.2	.	0.2	0.1	0.1	0.1	0.2	.	0.1	
14	.	0.1	
15	
16	0.2	
17	.	.	0.1	.	.	.	0.1	0.2	0.2	0.1	.	0.1	
18	
19	.	.	0.1	
20	
21	
22	
23	15.4	15.7	9.5	4.4	18.9	7.5	13.0	9.2	14.9	13.1	15.0	6.9	16.8	17.2	17.8	18.5	6.8	8.0	12.3	10.7	8.2	
24	1.6	2.1	4.0	9.1	8.2	1.8	7.5	1.1	3.9	3.3	5.0	2.2	1.9	2.2	2.4	2.8	8.6	1.0	4.4	3.4	0.6	
25	0.3	0.3	0.7	.	0.1	.	.	
26	
27	3.6	0.2	1.2	2.9	0.3	0.8	2.9	2.1	1.9	1.1	1.2	2.7	2.4	0.6	3.0	1.0	1.2	.	1.3	.	.	
28	.	.	0.4	.	0.2	.	0.3	.	.	1.7	.	.	0.4	0.1	0.9	.	1.7	
29	10.0	13.0	22.0	8.7	18.3	22.8	15.3	14.8	17.1	26.3	16.8	25.9	13.2	13.8	21.2	11.3	22.8	14.2	21.1	22.4	22.3	
30	0.6	0.3	4.5	1.5	0.4	2.6	1.2	0.5	1.6	0.3	0.4	2.1	1.2	0.3	0.5	.	2.8	.	0.9	4.1	0.3	
I	9.8	25.1	10.7	11.3	46.4	9.7	11.5	10.7	7.7	13.9	45.8	11.2	14.3	13.7	6.6	9.7	28.7	34.3	36.0	12.3*	12.4	
NORM	22.4	23.4	22.3	24.9	25.5	.	23.7	22.7	21.9	23.5	25.1	25.2	23.3	24.0	.	23.4	25.1	26.0	.	21.6	21.9	
II	0.8	4.5	2.7	0.5	4.0	1.6	2.0	1.5	3.9	3.6	5.5	6.4	2.0	2.5	2.5	1.6	2.2	10.5	3.7	6.2	5.0	
NORM	27.1	28.1	27.2	26.9	28.6	.	28.4	27.8	27.1	27.8	27.1	27.3	27.1	29.5	29.1	27.1	25.9	.	26.9	25.1	.	
III	31.2	31.3	41.6	26.6	46.6	35.8	40.2	27.7	39.4	45.8	38.4	39.8	35.9	34.2	45.8	33.6	44.6	23.2	40.1	40.6	31.4	
NORM	23.7	26.5	26.4	28.2	28.5	.	27.0	24.6	26.4	27.3	26.9	28.9	26.9	28.5	28.4	28.4	28.5	25.7	.	25.7	24.6	
MND	41.8	60.9	55.0	38.4	97.0	47.1	53.7	39.9	51.0	63.3	89.7	57.4	52.2	50.4	54.9	44.9	75.5	68.0	79.8	59.1	48.8	
NORM	73.2	78.0	75.9	80.1	82.6	.	79.1	75.1	75.4	78.6	79.1	81.4	77.3	82.0	80.8	80.7	77.6	.	74.2	71.6	.	

DISTRICT 2		DISTRICT 3																												
NR	353	134	135	136	139	140	141	142	143	144	145	147	148	150	151	152	153	154	155	156										
DAG	BLOK ZIJL	MIDDEL STUM	WOL TER SUM	EZIN GE	GRO NINGEN	ASSEN	DEL F ZIJL	WARF FUM	FINS TER WOLDE	TER APEL	ZOUT KAMP	VEEN DAM	SAPPE MEER	UIT HUI ZEN	ROODE SCHOOL	GIETER VEEN	WIN SCHO TEN	EENRUM	EEXT	VLAGT WEDDE										
1	1.6	5.6	4.6	9.0	11.1	2.2	9.4	8.0	8.4	7.4	24.3	2.1	4.2	12.1	12.7	5.0	8.5	7.6	5.4	5.2										
2	0.9	6.4	6.7	1.3	1.3	0.4	3.2	10.3	2.4	1.9	5.9	1.4	2.8	6.0	3.2	2.7	6.7	5.0	5.0	3.6										
3	.	0.1	.	0.2	.	.	0.1	0.9	.	.	0.2	.	0.2	2.1	5.1	.	.	0.3	.	.										
4	0.8	.	1.8	.	.	.	0.1	0.1	0.1	.	0.4	.	.	0.9										
5										
6	0.6	0.1	.	.	0.2	0.4	0.6	0.4	0.5	0.1	.	.	0.1	.	0.5	.										
7	0.9	1.9	0.8	2.5	4.0	0.6	2.2	2.6	2.9	5.5	0.8	2.9	1.7	2.5	1.5	3.2	3.7	2.9	1.9	2.6										
8	0.5	0.7	1.6	1.1	0.8	2.7	1.1	0.2	1.1	3.2	1.0	3.6	1.2	0.4	1.7	4.2	1.0	1.0	5.8	1.6										
9	1.6	37.7	42.3	27.7	35.5	25.3	64.0	38.3	51.0	52.1	50.2	51.1	53.4	37.2	44.8	52.9	62.8	43.5	52.6	51.7										
10	3.5	0.1	0.2	0.3	.	.	0.1	0.4										
11	3.1	11.9	6.0	9.7	5.2	3.6	5.8	11.7	9.2	7.1	5.8	12.2	6.7	9.0	1.8	6.0	9.3	4.9	3.8	11.0										
12	0.4	0.7	0.4	0.2	.	0.5	1.3	0.8	1.1	1.7	1.5	2.0	2.4	0.2	1.9	1.8	0.7	0.7	0.9	1.9										
13	0.3	0.2	0.1	0.1	0.1	.	0.1										
14	.	.	.	0.1										
15										
16	.	.	.	0.1										
17	.	.	.	0.2	0.1	.	.	.	0.1	.	.										
18										
19										
20										
21										
22										
23	11.4	10.3	7.2	17.6	15.0	7.2	11.5	11.8	7.3	7.7	21.0	6.3	9.2	12.4	13.4	5.2	7.0	13.2	9.2	6.0										
24	1.0	4.5	3.2	4.9	2.0	4.1	3.5	8.8	2.3	1.1	9.3	5.6	0.7	7.7	5.7	6.4	3.4	4.0	1.8	1.7										
25	0.5	0.3	.	.	0.2	0.1	0.4	.	.										
26	0.2										
27	1.9	0.4	0.1	0.5	0.2	0.7	0.2	0.8	0.2	.	1.5	0.4	0.5	0.9	0.9	0.6	.	0.7	0.3	0.2										
28	0.1	0.1	0.4	0.1	.	0.5	0.1										
29	11.5	19.7	23.2	17.5	17.4	25.8	26.2	22.9	19.4	9.2	21.5	22.4	20.9	23.4	27.0	24.2	21.3	20.6	22.3	11.5										
30	.	.	0.1	.	.	.	0.1	0.2	.	0.4	.	.	0.4	0.4	0.2	.	.	0.2	0.2	0.6										
I	9.6	52.5	56.0	41.8	52.9	31.6	80.8	60.4	67.8	70.4	83.0	61.5	64.2	60.5	69.1	68.0	83.2	60.3	71.2	66.0										
NORM	21.8	.	.	.	25.4	23.3	23.5	24.9	23.0	21.6	23.1	22.3	23.6	26.2	22.1	21.9	22.3	24.6	24.9	21.9										
II	3.8	12.6	6.4	10.3	5.2	4.1	7.3	12.6	10.4	8.8	7.3	14.2	9.1	9.3	1.8	7.9	11.1	5.7	4.8	13.0										
NORM	26.5	.	.	26.3	26.6	28.0	28.7	26.1	25.1	28.1	25.0	27.9	31.8	29.6	25.4	24.8	29.2	28.0	25.3	.										
III	25.8	34.9	33.7	40.6	34.7	37.8	42.1	44.7	29.4	18.1	54.3	34.8	31.7	44.8	47.2	36.4	31.8	38.9	34.3	20.1										
NORM	25.7	.	.	23.1	21.3	22.0	26.0	20.2	17.7	27.8	19.6	21.7	26.8	24.4	20.8	20.2	26.6	22.6	17.2	.										
MND	39.2	100.0	96.1	92.7	92.8	73.5	130.2	117.7	107.6	97.3	144.6	110.5	105.0	114.6	118.1	112.3	126.1	104.9	110.3	99.1										
NORM	74.0	.	.	74.8	71.3	73.4	79.7	69.4	64.4	79.1	66.9	73.1	84.8	76.2	68.1	67.3	80.4	75.5	64.4	.										
		DISTRICT 3																			DISTRICT 4									
NR	158	159	160	161	162	163	164	172	323	337	210	217	221	222	223	224	226	227	228	230										
DAG	ONNEN	NIEUW BUIJNEN	VEEN HUI ZEN	EELDE	NIE KERK	RODEN	ZEE RIJF	NIEUW OLDA	LAAG HA LEN	SCHOON LOO	BEVER WIJK	HEILOO	ENK HUI ZEN	HOORN	SCHER LING WOUDE	EDAM	WIJK A/ZEE	ANNA PAU LOWNA	SCHA GEN	ZAAAN DIJK										
1	5.5	3.4	4.7	7.4	8.5	6.9	15.8	13.8	3.1	2.2	4.0	4.1	1.9	13.2	2.8	3.0	4.1	5.4	18.5	2.5										
2	2.5	1.7	0.9	0.6	2.4	1.7	9.1	2.7	1.6	1.3	4.1	2.2	2.2	0.8	1.7	1.7	3.1	2.1	3.7	2.1										
3	0.1	1.8	0.1	0.1	0.1	.										
4	0.6	0.1	0.4	0.6										
5	0.1										
6	0.5	.	0.5	0.6	0.7	0.5	0.2	.	0.3	0.4	.	.	0.2										
7	1.4	4.4	0.4	0.6	3.7	1.8	1.1	1.9	1.2	1.7	0.2	.	4.2	4.7	2.3	1.9	.	0.2	.	2.1										
8	2.1	4.1	2.0	2.3	1.7	1.8	0.8	1.0	2.5	6.4	6.6	8.7	0.9	.	2.0	0.5	21.5	.	0.8	12.0										
9	45.9	51.1	24.9	40.8	32.4	27.8	48.6	60.3	15.1	28.0	.	0.6	1.0	1.9	0.8	1.5	.	1.8	1.9	7.2										
10	0.9	0.2	5.4	16.3	12.0	17.0	4.5	8.2	7.5	4.1	5.5	12.7										
11	4.5	6.3	13.6	5.5	4.6	5.1	3.1	11.1	4.5	5.8	13.2	16.2	5.6	7.5	7.7	20.2	12.3	4.9	7.4	13.6										
12	2.5	1.3	2.0	1.0	2.6	1.0	0.1	.	0.4	0.8	0.2	0.2	.										
13	.	.	0.1	.	0.2	0.1	.	.	0.2	.	.	0.5	0.1	.	1.3	3.7	.	0.8	1.0	1.0										
14										
15										
16	0.1										
17	0.1	0.1	0.1	0.1	0.1	.	.	.	0.2	.	0.1										
18										
19										
20	0.1										
21										
22										
23	10.8	5.3	10.9	9.3	14.5	8.8	7.5	7.5	11.2	6.8	9.6	9.1	14.2	12.5	16.4	12.6	10.5	5.5	7.7	9.5										
24	3.8	1.5	4.1	4.1	2.5	3.8	4.4	2.5	1.3	1.8	5.6	7.5	1.0	1.3	4.9	3.2	5.5	3.6	4.1	6.0										
25	0.3	0.2	.	.	0.6	.	.	.	0.1	0.1	.										
26	0.1	.	.										
27	0.1	0.2	0.8	0.2	0.3	0.1	0.2	.	.	0.2	1.8	1.6	2.8	1.6	5.9	1.8	2.1	1.8	2.7	1.2										
28	0.2	.	.	0.5	0.1	0.1	.	.										
29	21.7	18.4	34.6	26.1	17.0	21.1	21.1	18.3	23.3	17.6	5.5	6.4	5.5	10.0	7.2	6.9	3.5	25.9	10.4	4.2										
30	.	0.1	0.1	.	.	0.1	0.2	0.8	0.3	.	.	0.1	.	1.8	1.2	.										
I	58.5	64.7	33.4	52.3	49.4	40.8	77.8	80.3	24.7	40.2	20.3	31.9	22.4	37.6	14.1	16.8	36.3	13.7	30.5	38.6										
NORM	23.3	22.1	24.2	22.6	23.6	25.4	25.1	.	24.2	.	26.8	26.7	22.8	22.1	27.9	25.7	24.1	27.5	27.5	24.6										
II	7.0	7.6	15.7	6.5	7.4	6.3	3.3	11.1	5.1	6.6	13.2	16.8	5.8	7.6	9.0	23.9	12.3	6.1	8.6	14.9										
NORM	27.6	25.6	27.9	26.1	26.6	27.4	28.0	.	26.7	.	30.5	36.7	28.5	28.6	29.2	27.9	31.9	31.1	32.3	29.9										
III	36.9	25.5	50.4	40.2	34.4	33.8	33.3	28.3	35.8	26.5	22.9	25.4	23.8	26.0	34.4	24.6	21.6	38.9	26.2	20.9										
NORM	21.2	19.7	23.6	21.8	25.1	26.5	23.9	.	20.7	.	29.1	26.3	27.1	25.2	29.0	27.8	27.3	31.1	31.7	29.0										
MND	102.4	97.8	99.5	99.0	91.2	80.9	114.4	119.7	65.6	73.3	56.4	74.1	52.0	71.2	57.5	65.3	70.2	58.7	65.3	74.4										
NORM	72.2	67.3	75.7	70.5	75.3	79.3	77.0	.	71.6	.	86.3	89.7	78.4	76.0	86.1	81.4	83.3	89.7	91.5	83.5										

SEPTEMBER 2003

NEERSLAG 8-8 UUR (MM)

DISTRICT 4														DISTRICT 5							
NR	233	234	235	236	238	239	240	242	249	251	252	255	257	256	317	344	348	352	356	359	
DAG	ZAAN DAM H'BRG	BER GEN	CAS TRICUM	MEDEM BLIK	DE HAUKES	DEN OEVER	KREI LER OORD	PURMER END	HOOG KARS PEL	WEST BEEM STER	KOL HORN	OB DAM	HOOG WOUD	MARK EN	MARK NESSE	TOLLE BEEK	EMMEL OORD	NA GELE	LEMMER KUIJNRE BUMA		
1	5.2	4.2	2.7	3.4	5.7	2.9	3.1	3.8	1.5	4.8	5.1	6.1	9.9	1.3	7.6	11.4	7.7	8.5	3.4	2.3	
2	1.4	2.7	1.4	4.1	2.0	0.4	.	1.0	4.7	1.1	1.1	1.4	3.5	1.1	3.3	0.2	1.5	0.2	0.6	0.8	
3	
4	0.1	
5	0.1	.	
6	0.1	.	.	.	0.1	0.3	0.1	0.3	0.9	0.4	0.2	0.4	
7	4.3	.	.	1.2	.	.	0.2	4.5	7.5	0.8	.	.	0.5	2.6	1.1	2.0	2.2	2.3	1.7	1.1	
8	10.9	9.3	15.0	.	3.0	2.3	2.1	0.1	0.4	0.4	0.6	.	0.3	0.6	0.5	.	.	.	0.9	.	
9	2.3	0.4	0.5	11.0	10.3	.	.	2.5	1.5	4.7	1.7	3.4	1.2	6.2	0.9	.	0.4	.	1.1	0.3	
10	6.7	7.2	13.5	18.1	3.8	2.1	6.5	14.1	19.0	17.6	14.7	7.5	9.0	6.9	1.0	2.2	2.2	0.9	11.1	3.2	
11	9.9	14.4	13.5	5.5	6.2	2.5	4.2	9.4	6.7	10.8	5.3	7.6	7.8	9.9	4.1	5.3	4.3	5.1	1.8	1.3	
12	0.1	.	.	0.1	0.5	.	0.2	0.6	0.3	.	.	0.1	.	.	0.2	0.1	
13	0.4	.	.	.	0.6	0.2	0.5	1.3	0.1	0.8	0.8	0.4	.	2.3	.	2.9	0.6	3.5	0.4	.	
14	0.1	0.1	.	.
15
16	0.1	.	0.1
17	.	.	.	0.3	0.1	0.1	.	.
18	0.1
19
20	0.1
21
22
23	14.1	9.8	9.0	13.7	5.2	3.4	11.6	15.3	13.0	13.8	10.7	8.4	8.2	17.3	13.0	19.3	12.5	17.5	15.4	12.9	
24	5.8	3.2	8.0	2.0	5.5	2.4	4.6	3.6	3.7	5.1	4.3	3.5	5.2	4.2	0.5	1.1	1.1	2.3	1.1	0.9	
25	0.5	0.1	0.6	0.2	0.7	0.1	.	.
26
27	7.4	2.6	1.5	2.5	2.9	2.5	3.1	2.2	2.1	1.4	3.0	2.3	4.2	1.5	1.1	2.2	1.6	2.8	2.1	2.2	
28
29	6.8	13.3	10.0	12.4	12.9	15.9	11.9	6.1	7.5	6.3	13.1	7.8	13.1	8.0	12.1	4.6	8.0	5.0	7.4	6.5	
30	0.2	0.1	.	0.2	.	0.7	.	0.2	1.9	0.2	0.3	0.9	0.5	.	0.1	.	0.2	.	.	.	
I	30.8	23.8	33.1	37.8	24.8	7.7	11.9	26.0	34.7	29.4	23.2	18.6	24.5	19.0	14.5	16.1	14.9	12.3	19.1	8.2	
NORM	26.0	28.3	27.4	23.9	26.7	25.5	23.1	29.7	21.8	26.1	26.0	24.1	22.2	23.3	22.9	
II	10.3	14.4	13.5	5.8	6.9	2.7	4.7	10.9	7.3	11.9	6.3	8.8	8.1	12.2	4.1	8.3	4.9	8.6	2.6	1.4	
NORM	31.2	32.4	33.1	28.3	32.5	29.8	28.9	30.1	28.8	31.6	30.5	28.9	28.7	27.0	26.6	
III	34.3	29.0	28.5	30.8	26.5	24.9	31.2	27.4	28.7	26.9	31.4	22.9	31.2	31.0	26.8	27.8	23.6	28.3	26.1	22.5	
NORM	29.8	30.4	28.6	28.4	30.9	29.9	28.0	30.0	23.9	28.1	32.5	24.9	24.0	26.1	24.8	
MND	75.4	67.2	75.1	74.4	58.2	35.3	47.8	64.3	70.7	68.2	60.9	50.3	63.8	62.2	45.4	52.2	43.4	49.2	47.8	32.1	
NORM	87.0	91.1	89.1	80.6	90.1	85.2	80.0	89.9	74.4	85.8	89.0	77.9	74.9	76.4	74.3	
DISTRICT 5														DISTRICT 6							
NR	364	365	366	367	369	371	372	516	298	327	330	331	332	333	335	339	340	341	342	343	
DAG	DRON TEN	SWIF TER BANT	BID DING HUIZEN	O.VAAR DERS DIEP	LELY STAD	ZEE WOLDE	ZEE WOLDE SW	HARDER WIJK	STEEN WIJKS MOER	DWIN GE LOO	ZWOLLE	DENE KAMP	HOOG VEEN	EMMEN	IJSSEL MUIDEN	RHEE ZER VEEN	HEINO	ZWEE LOO	VILS TEREN	SCHOO NEBEEK	
1	10.4	0.9	3.4	0.6	0.2	1.7	0.1	0.4	5.8	2.8	2.6	2.7	1.4	3.8	6.7	2.6	0.8	1.5	0.4	1.3	
2	3.1	0.4	0.2	0.9	0.1	2.2	0.8	2.1	3.6	3.5	3.9	1.5	.	3.2	4.2	4.5	3.8	2.6	2.2	1.4	
3	0.1	0.3	
4	
5	
6	0.7	0.3	0.8	1.0	0.3	0.4	0.3	0.3	0.1	0.6	0.1	.	1.0	.	1.1	0.3	0.5	.	0.3	.	
7	1.4	3.6	0.8	4.0	1.4	3.8	0.9	1.6	4.2	2.6	1.3	1.0	0.5	4.2	2.7	4.2	0.2	2.9	1.0	7.5	
8	0.1	.	0.2	9.2	3.1	2.0	6.3	3.1	13.5	1.1	9.1	3.7	5.7	1.5	5.9	
9	0.3	9.2	7.3	0.2	0.2	.	.	0.3	16.4	11.6	2.2	16.1	7.8	38.6	0.4	6.5	2.6	26.7	1.5	23.7	
10	2.7	3.3	.	4.5	4.5	1.5	.	0.1	0.4	2.4	0.1	3.0	0.5	3.5	0.1	0.2	.	2.8	0.1	.	
11	7.0	7.3	13.9	8.4	11.2	8.8	9.4	10.3	4.5	4.6	7.2	9.3	3.2	5.6	5.6	6.9	9.0	4.6	5.1*	8.3	
12	.	.	.	0.1	1.0	0.4	0.1	7.1	.	1.0	0.2	0.5	0.2	0.8	.	0.8	
13	3.7	0.3	0.9	3.2	1.9	1.6	3.2	1.8	0.2	0.3	3.3	2.1	.	.	3.6	.	1.8	.	0.2	.	
14
15
16
17	.	.	.	0.1
18
19
20
21
22
23	15.2	11.7	12.0	15.8	12.5	11.7	14.0	13.4	7.8	7.8	13.6	4.6	6.8	8.6	13.6	8.3	10.9	5.5	7.0	4.4	
24	5.7	6.2	9.5	2.6	4.6	4.6	3.7	3.4	1.9	3.8	1.2	5.2	1.5	0.5	1.2	1.5	1.1	1.2	0.5	2.3	
25	0.4
26
27	1.4	1.5	.	1.8	1.2	0.9	0.8	.	.	1.5	0.2	.	0.8	.	1.4	0.5	0.5	.	1.2	.	
28	0.2
29	21.3	6.1	7.9	15.8	6.6	5.7	6.1	10.4	6.3	20.5	12.2	2.1	12.4	6.9	27.1	6.2	6.0	8.0	7.2	6.6	
30	0.1	0.2	0.2	1.3	.	.	0.3	0.3	.
I	18.7	17.7	12.7	11.2	6.7	9.6	2.2	4.8	39.7	26.6	12.2	30.6	14.3	67.1	16.3	27.4	11.6	42.2	7.0	39.8	
NORM	25.0	22.7	20.6	22.0	.	.	.	21.3	.	25.4	22.4	22.6	23.1	20.9	23.9	19.5	20.7	22.2	20.0	18.6	
II	10.7	7.6	14.8	11.8	13.1	10.4	12.6	12.1	5.7	5.3	10.6	18.5	3.2	6.6	9.4	7.4	11.0	5.4	5.3*	9.1	
NORM	29.5	28.5	25.1	27.1	.	.	.	24.6	.	27.5	25.3	23.4	28.9	26.3	26.8	25.0	25.5	25.5	24.4	25.8	
III	43.7	25.7	29.4	36.0	24.9	22.9	24.6	27.6	16.2	34.9	27.2	11.9	22.0	16.2	43.3	16.6	18.5	14.7	15.9	13.6	
NORM	25.9	24.1	25.3	26.0	.	.	.	23.3	.	24.2	24.3	20.9	22.9	20.3	25.6	23.0	24.4	19.6	25.7	19.3	
MND	73.1	51.0	56.9	59.0	44.7	42.9	39.4	44.5	61.6	66.8	50.0	61.0	39.5	89.9	69.0	51.4	41.1	62.3	28.2	62.5	
NORM	80.4	75.4	71.0	75.1	.	.	.	69.1	.	77.1	72.0	66.9	74.9	67.6	76.3	67.5	70.6	67.3	70.2	63.6	

DISTRICT 6															DISTRICT 7						
NR	345	349	354	358	361	362	664	665	668	670	672	675	681	687	225	229	426	435	437	438	
DAG	VROOMS HOOP	KLA ZIENA VEEN	DE DEMS VAART	ROU VEEN	TUB BERGEN	RUINER WOLD	AL MELO	EN SCHEDE	HENGE LO (OV)	TWEN THE	HELLEN DOORN	WEER SELO	LET TELE	HOL TEN	OVER VEEN	ZAND VOORT	ZOE TER MEER	HEEM STEDE	LIJN DEN	HOOFD DORP	
1	1.2	2.7	5.3	6.5	0.8	2.0	0.6	2.7	0.2	2.0	0.3	2.6	3.0	0.3	7.3	3.0	4.3	5.2	4.9	6.5	
2	4.6	0.3	1.1	0.7	4.1	2.7	1.5	0.9	9.3	5.7	2.9	1.9	0.8	4.7	3.3	7.0	3.6	3.3	3.1	3.0	
3	0.1	.	.	0.4	0.1	0.3	
4	
5	
6	0.3	0.1	0.3	1.1	.	0.7	0.5	0.2	0.5	0.4	0.6	0.9	0.3	0.4	
7	4.4	6.8	0.3	2.2	4.1	1.4	2.5	1.6	3.4	3.4	2.3	2.8	0.8	1.7	0.3	.	4.8	6.3	2.5	4.0	
8	5.2	5.9	3.0	2.3	5.2	2.2	3.7	6.3	4.1	6.5	7.2	4.9	6.7	4.6	9.1	15.3	2.0	8.2	5.5	7.5	
9	4.5	34.0	6.3	2.6	5.9	5.2	2.9	8.3	4.0	9.3	2.3	8.6	2.1	2.1	0.5	.	0.2	0.3	9.4	0.5	
10	0.2	2.5	0.3	0.5	0.3	1.3	0.1	0.2	2.2	1.9	0.7	0.3	1.5	0.2	9.3	3.0	5.2	3.6	3.8	5.0	
11	7.8	8.4	6.0	4.2	12.2	2.5	12.8	21.1	17.5	18.8	10.1	13.8	15.8	15.8	11.2	13.8	19.8	15.6	11.6	12.0	
12	0.4	1.6	0.5	0.2	2.7	.	0.8	2.7	1.9	1.0	0.4	1.7	.	0.2	0.5	3.5	1.7	0.3	.	0.2	
13	0.2	.	0.7	1.4	0.8	0.1	0.5	0.6	0.6	.	1.6	0.7	0.7	.	.	0.8	4.0	1.0	.	0.3	
14
15
16
17	0.2
18
19
20
21
22
23	5.2	5.8	7.5	8.9	4.7	8.2	5.8	9.6	7.9	4.7	9.0	4.2	6.2	7.7	12.0	9.8	14.7	14.3	12.4	13.0	
24	4.6	1.1	0.3	0.4	2.1	0.6	7.9	4.6	4.4	6.4	5.0	4.6	3.7	10.2	5.5	4.3	14.6	5.3	6.7	6.0	
25	0.1	0.3	0.1	0.1	.
26
27	.	.	0.5	0.9	.	0.6
28	0.6
29	6.2	6.3	8.4	13.3	4.0	19.0	5.3	4.6	4.9	4.5	5.5	4.0	4.2	6.5	2.6	6.5	14.3	1.7	6.0	2.1	
30	0.1	0.1	.	0.2	.	.	.	0.3	0.1	0.3	1.4	2.5	0.5	3.7	0.5	2.7	
I	20.4	52.3	16.6	15.9	20.4	15.5	11.8	20.2	23.7	29.2	16.3	22.0	15.2	14.0	29.9	28.3	20.1	27.3	29.3	26.8	
NORM	21.0	18.1	20.3	21.7	20.6	.	22.8	24.2	20.9	20.6	20.9	22.2	21.3	.	26.0	21.8	.	25.0	23.7	25.9	
II	8.4	10.0	7.2	5.8	15.7	2.6	14.1	24.4	20.0	19.8	12.1	16.2	16.5	16.0	11.7	18.3	25.5	16.9	11.6	12.5	
NORM	23.9	24.1	25.0	26.7	24.2	.	22.7	25.3	24.8	24.6	23.3	25.8	23.4	.	32.7	32.3	.	29.3	31.3	31.3	
III	16.1	13.3	16.7	23.7	10.8	28.4	19.0	19.1	17.3	15.9	19.5	12.8	14.7	24.4	22.9	24.0	46.2	26.2	26.0	24.5	
NORM	23.2	19.7	24.8	23.1	24.0	.	24.5	24.0	23.1	21.6	24.6	22.6	24.4	.	29.0	27.9	.	29.1	28.3	29.4	
MND	44.9	75.6	40.5	45.4	46.9	46.5	44.9	63.7	61.0	64.9	47.9	51.0	46.4	54.4	64.5	70.6	91.8	70.4	66.9	63.8	
NORM	68.1	62.0	70.1	71.5	68.8	.	70.0	73.6	68.8	66.8	68.7	70.6	69.0	.	87.7	81.9	.	83.4	83.3	86.7	
DISTRICT 7																					
NR	439	440	441	442	443	444	449	450	451	453	454	455	456	458	461	463	464	466	467	469	470
DAG	ROELOF ARENDS VEEN	SCHE VE NINGEN	AM STER DAM	BOS KOOP	GOUDA	KAT WIJK	DELFT	NU MANS DORP	IJSSEL MONDE	BERG SCHEN HOEK	LISSE	STRIJ EN	OOST VOORNE	AALS MEER	BAREN DRECHT	N.HEL VOET	BRIEL LE	WASSE NAAR	POORTU GAAL	LEIDEN	ZEG VELD
1	7.1	3.0	8.1	2.0	7.8	3.9	7.5	7.7	3.1	4.0	6.0	2.5	2.5	7.1	2.2	4.1	13.5	5.5	2.6	2.5	3.8
2	2.5	2.5	0.6	3.8	2.7	3.5	2.8	2.1	3.5	2.6	6.7	1.8	4.5	1.5	4.1	2.6	2.1	2.5	2.8	2.7	0.1
3	.	.	0.2	0.4
4
5
6	.	.	.	0.7	0.1	0.6
7	3.6	0.6	2.3	0.4	0.1	3.9	1.7	3.2	1.4	0.2	4.6	6.9	0.3	3.5	2.2	0.5	.	0.9	.	5.6	0.7
8	16.5	0.6	5.6	43.4	48.2	0.1	3.0	2.5	0.7	0.1	6.1	0.3	.	7.6	0.7	.	0.1	0.5	2.7	3.0	11.2
9	.	.	3.0	0.9	0.4	0.8	.	0.1	.	0.7	.	.	.	0.4	1.5	0.1	.	0.9	.	.	.
10	5.9	13.3	4.7	6.1	11.5	14.7	21.8	8.4	8.2	12.3	7.4	5.0	7.6	6.6	6.9	12.6	9.2	9.7	12.2	8.5	5.9
11	12.1	12.8	8.2	17.0	19.3	11.9	18.8	16.5	19.8	19.5	11.9	17.0	16.5	11.6	16.9	12.8	14.8	13.6	15.4	14.5	16.7
12	0.8	6.4	.	0.5	0.3	3.0	2.3	1.3	0.5	0.2	1.0	.	4.7	.	0.2	4.1	3.1	2.9	3.1	1.0	.
13	.	0.4	0.5	1.2	1.0	0.7	2.4	2.3	1.9	2.6	1.5	.	0.1	0.3	2.1	.	1.6	0.3	4.2	0.8	.
14	0.3
15	0.1	.	.	.	0.1
16	0.1	0.1	.	.
17	0.1
18
19
20	0.1	.	.
21
22
23	13.2	11.6	17.0	11.0	17.4	11.5	13.1	23.8	18.5	13.0	11.9	12.2	15.2	19.2	19.3	12.8	14.8	9.8	10.6	15.0	13.4
24	6.1	10.8	4.7	13.7	11.5	6.3	7.0	5.1	3.6	8.0	5.1	0.9	2.5	5.2	3.2	5.4	3.4	3.8	1.3	9.3	10.8
25	0.2	.	0.1
26
27	2.5	2.3	2.6	0.8	0.9	2.5	1.9	0.8	1.8	3.3	2.2	0.7	2.3	1.0	2.8	0.7	2.6	2.4	3.4	1.9	0.4
28	0.2	.	.	.	0.8	0.2	.	0.4	0.4	0.2	.	0.4	.	.
29	6.9	17.5	5.0	5.0	4.2	11.2	17.3	3.9	11.4	6.5	7.0	5.3	8.6	8.8	13.4	8.1	12.3	16.6	7.3	14.0	5.4
30	1.1	.	.	1.8	0.8	.	3.1	0.5	1.0	3.0	3.2	.	0.2	2.2	0.2	.	0.4	0.6	0.5	.	.
I	35.6	20.0	24.5	57.3	70.8	26.9	36.8	24.0	16.9	19.9	30.8	16.5	15.3	27.8	16.2	19.8	25.3	20.0	20.3	22.3	22.3
NORM	24.8	24.3	26.1	24.4	22.3	24.0	21.2	21.0	22.8	22.0	25.0	23.0	21.6	24.6	23.6	25.3	23.4	25.9	21.5	25.3	21.3
II	12.9	19.6	8.7	18.7	20.9	15.6	23.5	20.1	22.2	22.3	14.7	17.0	21.3	11.9	19.3	16.9	17.9	18.1	19.1	19.7	17.5
NORM	32.6	35.0	29.0	30.0	29.5	33.2	31.7	29.9	31.6	31.7	31.9	29.9	32.3	30.0	31.3	31.8	33.2	32.7	33.9	33.2	26.9
III	29.8	42.2	29.3	32.3	34.8	31.5	42.4	34.3	36.5	33.8	29.5	19.9	29.0	36.5	39.3	27.4	33.7	33.2	23.5	40.2	30.0
NORM	27.9	32.3	28.1	27.3	26.2	31.2	31.4	24.1	27.5	27.8	28.2	23.1	29.7	27.7	26.6	24.8	30.2	31.8	27.7	29.8	24.1
MND	78.3	81.8	62.5	108.3	126.5	74.0	102.7	78.4	75.6	76.0	75.0	53.4	65.6	76.2	74.8	64.1	76.9	71.3	62.9	82.2	69.8
NORM	85.4	91.6	83.2	81.6	78.0	88.4	84.4	75.0	81.9	81.5	85.1	76.0	83.6	82.4	81.6	81.9	86.8	90.4	83.2	88.2	72.3

SEPTEMBER 2003

NEERSLAG 8-8 UUR (MM)

NR	DISTRICT 7										DISTRICT 8									
	473	474	477	479	480	548	559	561	563	572	328	329	336	350	509	510	514	523	541	542
DAG	R'DAM WH	VALKEN BURG VK	H.VAN H'LAND M'PAD	MAAS LAND	HON SELMERS DIJK	LOENEN A/D VECHT	VLEU TEN	BEN SCHOP	WEEP S	AB COUDE	HEERDE	WAPEN VELD	OLDE BROEK	ELBURG	DOORN	VAAS SEN	EPE	WIJK B/DUUR STEDE	ARNHEM	PUT TEN
1	4.3	2.9	1.2	2.4	4.1	2.9	2.7	5.2	8.4	2.9	4.2	4.0	6.0	9.6	3.8	4.9	4.1	3.2	2.2	0.9
2	2.4	3.1	3.4	3.0	2.2	0.1	.	.	3.5	0.3	1.1	2.3	1.8	0.6	1.3	1.2	1.9	0.2	0.1	0.7
3	0.1
4
5
6	0.1	0.5	0.5	0.4	0.2	0.4	0.2	.	0.7	1.0	0.5	0.3	0.3	0.2	0.5	0.4
7	.	4.2	0.5	0.6	0.4	1.1	3.8	7.8	2.1	1.2	0.3	0.9	5.5	1.0	1.9	1.0	0.5	2.0	4.7	1.8
8	7.4	0.4	.	1.0	1.5	0.5	.	0.5	0.6	2.8	0.9	1.0	0.5	0.3	0.1	1.0	0.9	.	7.7	0.1
9	.	0.5	0.5	0.3	2.0	0.5	2.5	2.2	3.5	3.8	.	1.6	1.5	.	.	.
10	9.3	11.1	16.8	7.5	7.5	2.8	5.6	5.2	2.2	4.3	0.5	0.9	1.1	2.1	3.1	1.3	0.2	1.4	0.7	2.8
11	14.9	12.5	18.1	18.5	17.7	10.2	14.5	17.1	8.9	10.7	10.6	10.2	11.5	9.0	14.6	14.8	11.7	15.3	19.3	12.8
12	2.2	2.7	5.8	4.2	2.1	.	.	.	0.1	0.3	0.1	0.1	0.9	.	0.1	0.1
13	0.5	0.4	1.0	0.2	0.3	0.1	.	.	0.5	0.6	0.9	1.9	1.3	2.0	0.2	1.3	1.2	0.4	1.1	1.3
14
15
16
17
18
19
20
21
22
23	17.1	7.4	19.2	21.9	13.1	16.4	14.0	18.4	17.0	20.4	7.0	13.2	14.5	17.8	10.1	7.0	7.2	4.6	5.3	14.0
24	2.7	10.9	1.5	1.6	2.8	2.6	6.8	7.5	3.1	2.3	8.2	8.0	10.2	14.4	12.0	7.9	8.1	4.9	8.1	6.3
25	0.1	0.3
26
27	2.7	2.1	2.2	2.0	1.8	1.5	1.0	0.4	0.5	0.9	0.2	1.0	1.0	1.2	0.4	0.2	0.3	0.2	.	0.3
28	.	.	.	0.4	0.1	.	.	.	0.2	.
29	5.3	12.0	9.0	11.6	10.4	7.8	8.5	9.7	8.8	9.7	8.3	9.2	10.8	21.3	6.6	9.1	7.8	4.8	4.2	12.6
30	0.3	0.2	1.0	0.8	0.4	0.5	.	.	1.3	0.2	0.6	0.1
I	23.5	22.2	22.4	14.5	15.7	7.9	12.6	19.4	19.0	12.4	9.7	11.3	19.1	18.4	10.8	11.3	9.4	7.0	15.9	6.7
NORM	23.1	23.8	.	.	22.7	21.5	21.0	22.1	24.2	.	23.2	23.4	24.8	20.8	.	24.3	23.5	19.5	23.1	23.0
II	17.6	15.6	24.9	22.9	20.1	10.3	14.5	17.1	9.5	11.3	11.5	12.1	12.8	11.0	15.1	16.2	13.0	16.6	20.4	14.2
NORM	32.2	32.9	.	.	30.4	28.8	27.4	29.1	30.2	.	25.6	26.9	28.2	24.6	.	28.5	28.4	24.4	28.0	27.2
III	28.1	32.6	32.9	38.3	28.5	28.8	30.3	36.0	29.5	34.6	23.7	31.4	36.5	54.9	30.1	24.2	23.4	14.5	17.8	33.3
NORM	27.2	29.4	.	.	25.0	23.9	22.3	25.9	27.6	.	23.8	26.2	27.0	23.2	.	25.3	24.3	19.3	24.6	25.2
MND	69.2	70.4	80.2	75.7	64.3	47.0	57.4	72.5	58.0	58.3	44.9	54.8	68.4	84.3	56.0	51.7	45.8	38.1	54.1	54.2
NORM	82.5	86.2	.	.	78.1	74.2	70.7	77.1	81.9	.	72.6	76.5	80.0	68.6	.	78.0	76.2	63.2	75.7	75.4

DISTRICT 8

NR	DISTRICT 8										570	571	573	576	578	579	580	582	583	591	593
	543	546	547	550	557	558	560	564	565	567											
DAG	APEL DOORN	WOUDEN BERG	NIJ KERK	DE BILT	EER BEEK	LUN TEREN	AME RONGEN	HULS HORST	VOORT HUI ZEN	KOOT WIJK	ELS PEET	HARS KAMP	BEEK BERGEN	SPA KEN BURG	OOSTER BEEK	VEE NEN DAAL	BARNE VELD	HA MERS VELD	WAGE NINGEN PD	DEE LEN	LAREN
1	.	2.4	0.8	2.1	0.6	0.8	1.8	0.4	3.5	0.2	0.7	5.4	0.6	5.1	1.5	0.9	1.5	1.8	2.7	0.6	3.9
2	1.0	0.5	0.9	0.4	0.6	3.5	2.0	2.7	0.6	2.0	2.2	2.1	.	2.9	0.2	3.3	1.4	1.1	0.2	3.1	1.6
3	.	.	.	0.2	0.1	0.2	.
4
5
6	0.4	0.8	0.2	0.4	.	0.6	0.4	0.5	0.8	0.4	0.4	0.4	0.7	0.2	0.4	0.5	0.4	0.4	0.5	0.3	1.1
7	4.7	2.0	2.1	1.8	2.8	2.4	2.4	1.3	1.8	0.4	2.8	0.6	0.9	1.5	3.2	1.6	2.2	1.9	3.4	3.5	4.3
8	3.3	0.1	.	.	3.2	.	.	0.2	.	0.3	0.2	.	4.5	.	4.5	.	.	.	2.9	.	.
9	3.0	.	.	.	1.8	.	.	3.2	.	0.1	3.8	.	0.2	.	0.1	.	.	0.2	.	.	.
10	0.3	1.1	2.0	3.5	0.6	1.0	2.7	0.3	1.6	0.6	1.0	2.4	0.7	2.3	0.5	3.3	2.1	2.3	2.0	0.3	2.8
11	14.5	14.3	13.0	13.5	18.5	13.1	15.8	12.3	15.0	15.7	13.6	14.6	16.9	9.3	18.5	15.5	14.2	13.4	15.4	16.0	9.7
12	0.9	.	.	0.1	0.7	0.3	0.2	0.3	0.1	0.6	0.4	.	0.4	0.2	0.1	0.6	.	.	0.2	.	.
13	0.5	0.1	2.3	0.2	0.2	2.7	0.2	1.1	3.4	0.6	1.6	0.2	0.4	3.1	1.2	1.2	2.9	0.9	1.9	0.9	0.3
14	.	.	.	0.1	.	.	.	0.2	0.1
15	.	.	.	0.1
16	.	.	.	0.1	0.1
17
18	.	.	.	0.1
19	.	.	.	0.1
20
21	.	.	.	0.1
22
23	7.7	7.6	15.5	16.9	6.5	5.7	4.5	17.5	9.6	7.1	12.0	5.8	5.2	19.9	5.8	6.6	8.8	14.8	4.9	5.2	17.8
24	7.5	12.3	10.8	11.1	9.2	8.1	5.1	3.8	8.0	3.2	5.0	6.4	4.8	5.6	6.8	6.9	7.5	3.4	7.8	6.2	6.0
25	.	0.1	.	0.1	.	.	.	0.2
26	.	.	.	0.1	0.2
27	0.3	0.1	0.5	0.7	0.1	.	0.1	.	0.2	0.2	0.4	0.1	0.2	0.6	.	0.5	0.4	.	0.2	0.7	
28	.	0.2	.	0.1	.	0.2	0.1	0.4	0.1	0.4	0.2	0.2	1.0	.	0.4	0.4	0.2	0.8	0.8	.	.
29	12.9	7.8	6.9	5.1	5.0	5.4	6.3	11.5	11.9	8.1	10.8	7.5	6.3	5.3	6.5	2.6	13.6	8.5	5.0	7.2	6.0
30	.	0.1	.	0.5	0.2	.	0.5	0.2	0.4	.	.	0.1	.	.	0.1	.	.	0.1	.	.	.
I	12.7	6.9	6.0	8.4	9.6	8.3	9.3	8.6	8.4	4.0	11.1	10.9	7.6	12.0	10.4	9.6	7.6	7.5	9.0	10.9	13.7
NORM	21.7	20.7	18.4	20.3	23.2	20.1	21.3	21.2	20.5	21.5	23.4	20.9	23.0	20.0	23.9	20.1	20.7	20.4	21.3	23.6	.
II	15.9	14.4	15.3	14.3	19.4	16.1	16.2	13.9	18.6	16.9	15.6	14.9	17.7	12.6	19.8	17.3	17.1	14.3	17.5	16.9	10.0
NORM	28.1	25.3	24.8	29.0	26.6	27.4	29.4	27.4	28.1	28.7	30.5	26.1	29.5	24.0	27.7	26.7	25.7	27.6	25.7	27.6	.
III	28.4	28.2	33.7	34.7	21.0	19.4	16.6	33.6	30.4	19.0	28.2	20.1	17.5	31.4	19.6	16.5	30.6	27.1	18.6	19.6	30.5
NORM	25.3	22.2	22.3	23.3	23.8	21.9	21.4	25.4	23.6	25.8	24.6	22.6	26.3	23.0	22.0	22.0	23.7	24.0	21.7	22.4	.
MND	57.0	49.5	55.0	57.4	50.0	43.8	42.1	56.1	57.4	39.9	54.9	45.9	42.8	56.0	49.8	43.4	55.3	48.9	45.1	47.4	54.2
NORM	75.1	68.2	65.5	72.6	73.7	69.4	72.1	74.0	72.2	76.1	78.5	69.7	78.8	66.9	73.6	68.8	70.0	72.0	68.7	73.6	.

SEPTEMBER 2003

NEERSLAG 8-8 UUR (MM)

DISTRICT 11

NR	733	735	736	737	738	740	741	742	743	744	746	747	749	750	751	752	754	755	756	757	758	
DAG	VLIS SINGEN	KAPEL LE	BROU WERS HAVEN	KERK WERVE	BIER VLIET	ST KRUIS	STAVE NISSE	TER NEU ZEN	NOORD GOUWE	ANNA JACOBA POLDER	WEST KAPEL LE	KRAB BEN DIJKE	WILHEL MINA DORP	RIL LAND	VROU WEN POLDER	HAAM STEDE	OVE ZANDE	KORT GENE	MIDDEL BURG	THOLEN	WOL PH'RTS DIJK	
1	3.0	13.9	5.5	6.1	7.5	7.4	6.4	5.7	4.5	7.4	4.0	11.2	13.5	12.0	5.3	6.1	6.1	10.1	2.8	1.2	6.1	
2	1.2	5.6	6.4	8.2	7.8	2.7	2.9	12.4	3.7	2.0	3.5	1.6	3.9	1.4	1.8	4.1	3.1	7.4	1.1	1.5	1.2	
3	.	.	0.2	0.1	.	.	0.3	0.1	
4	0.1
5	0.1
6	1.9	0.9	0.4	.	4.0	3.4	.	1.0	0.5	.	1.2	0.5	1.0	.	0.9	1.2	1.5	1.1	1.5	0.2	3.3	
7	0.9	0.5	.	1.3	0.8	1.0	0.9	.	1.1	1.0	.	.	0.8	.	.	.	0.7	1.0	.	0.1	1.0	
8	3.4	0.1	
9	.	0.3	.	2.0	.	0.1	0.4	0.2		
10	3.9	6.2	18.2	16.6	4.8	5.1	14.9	3.0	21.1	13.9	6.7	4.0	10.0	2.4	30.5	19.2	3.9	16.0	4.3	0.3	10.0	
11	8.3	15.8	13.5	18.5	10.8	7.8	15.8	9.2	16.1	21.2	7.2	11.1	15.6	10.7	9.3	14.4	9.2	14.6	9.1	23.0	14.1	
12	2.1	6.5	2.1	3.1	2.3	1.4	3.1	0.8	2.3	1.7	2.0	2.1	5.2	1.3	3.3	2.0	4.6	5.8	1.7	0.8	5.2	
13	.	0.5	.	0.7	.	0.1	1.1	.	.	1.6	.	.	0.3	.	.	.	0.4	.	.	1.6	0.2	
14	0.1	
15	
16	
17	
18	
19	
20	.	.	.	0.1	.	0.1	
21	
22	
23	5.4	15.1	9.3	10.5	10.7	9.0	8.4	7.4	9.4	8.6	9.8	8.5	9.7	8.4	12.4	14.6	11.9	6.8	8.6	9.9	9.0	
24	0.7	2.1	3.0	1.3	1.8	6.1	1.2	1.8	0.7	1.3	0.7	0.5	3.9	0.1	0.2	5.4	1.3	3.7	0.1	1.6	1.5	
25	0.1	0.1	
26	
27	0.1	0.2	0.7	0.1	1.0	.	2.1	0.7	0.3	0.1	0.7	.	.	.	0.6	0.5	0.1	0.1	0.2	0.4	0.1	
28	1.3	4.1	0.6	0.1	2.2	2.8	2.3	0.5	1.3	3.7	.	0.6	3.4	0.2	.	4.0	2.5	1.0	2.1	3.0		
29	25.9	11.2	8.3	13.3	13.1	8.3	4.8	16.0	4.8	5.8	40.5	9.4	12.2	5.7	13.0	11.2	17.8	13.1	27.7	2.3	14.2	
30	0.6	2.5	.	1.3	1.4	.	0.7	.	.	0.4	.	1.2	.	1.7	.	.	0.1	1.7	2.1	.		
I NORM	10.9	27.4	30.7	34.3	24.9	23.1	25.4	22.1	30.9	24.3	15.4	17.7	29.4	15.8	38.5	30.6	15.3	35.6	9.7	3.3	21.9	
II NORM	10.4	22.8	15.6	22.4	13.1	9.4	20.0	10.0	18.4	24.5	9.2	13.2	21.1	12.0	12.6	16.4	14.2	20.4	10.8	25.4	19.6	
III NORM	34.0	35.2	21.9	26.6	30.2	26.2	19.5	26.4	16.5	19.9	51.7	20.3	29.2	16.1	26.2	31.7	35.1	26.3	39.3	18.4	27.9	
MND NORM	55.3	85.4	68.2	83.3	68.2	58.7	64.9	58.5	65.8	68.7	76.3	51.2	79.7	43.9	77.3	78.7	64.6	82.3	59.8	47.1	69.4	

DISTRICT 11

DISTRICT 12

DISTRICT 13

NR	760	761	762	763	764	767	770	828	829	832	833	834	837	838	839	841	827	831	843	
DAG	'S REN HOEK	HEE LIP PINE	PHI SCHOON DIJKE	KAD ZAND	KLOOS TER ZANDE	KA PELLE BRUG	WEST DORPE	OUDEN BOSCH	ZUN DERT	BERGEN O/ZOOM	OOS TER HOUT	CHAAM	STEEN BERGEN	GINNE KEN	HOOGHE HEIDE	KLUN DERT	TIL BURG	ES BEEK	GILZE RIJEN	
1	8.4	3.4	6.4	7.0	9.8	4.1	5.9	3.3	2.5	1.9	2.1	8.0	5.4	3.2	4.3	2.0	5.9	11.6	5.6	
2	3.2	2.6	1.1	4.5	2.0	6.5	3.0	3.5	1.9	0.9	2.6	1.6	0.9	8.5	0.3	2.1	1.4	1.6	2.0	
3	0.1	1.6	.	.	0.1	0.1	0.1	
4	0.1	
5	
6	1.2	3.0	1.9	1.3	0.3	.	0.2	.	0.2	.	.	0.1	
7	.	0.2	0.4	0.3	.	0.3	.	3.1	.	.	6.0	4.7	0.2	0.1	2.7	1.1	36.7	5.1	3.8	
8	1.1	.	.	0.9	1.3	.	0.1	.	.	0.4	.	.	0.4	.	0.3	
9	0.1	
10	9.1	3.1	5.8	5.4	6.0	2.2	2.2	3.7	3.1	1.3	4.5	1.7	6.2	5.7	3.8	7.2	1.4	1.5	5.4	
11	17.5	9.7	7.8	5.4	7.5	6.7	6.2	19.8	16.2	41.4	18.5	17.8	23.0	20.2	13.9	21.2	18.5	17.4	19.8	
12	4.4	2.5	1.3	1.2	5.2	2.9	.	0.3	.	0.6	0.2	.	0.6	.	1.6	0.2	.	.	0.2	
13	.	0.3	.	.	0.3	0.9	.	2.9	1.5	1.2	1.1	0.7	0.9	1.0	0.4	1.4	.	0.6	0.8	
14	
15	0.1	
16	0.1	
17	
18	
19	
20	0.1	.	.	.	
21	
22	
23	9.5	8.6	7.0	9.2	6.5	6.4	6.9	7.6	5.1	9.1	5.0	8.7	10.8	7.5	6.3	10.8	8.4	7.1	6.0	
24	1.3	1.1	2.7	1.1	2.3	0.1	2.4	1.9	1.6	1.0	2.0	2.0	1.6	5.3	1.2	2.7	2.6	2.8	2.4	
25	
26	
27	.	0.3	0.3	0.2	0.3	.	0.2	.	0.4	0.3	0.5	0.2	0.2	0.2	
28	3.4	0.3	2.7	1.1	0.2	0.1	0.1	0.5	1.2	0.2	0.6	0.7	0.6	0.8	1.6	0.2	2.8	5.4	1.7	
29	16.3	13.2	18.3	7.4	8.3	22.3	15.6	7.0	7.9	5.0	7.6	3.4	2.8	3.7	6.3	5.0	2.6	3.4	4.3	
30	.	1.1	.	.	0.9	0.4	0.1	.	2.1	2.4	.	0.8	0.9	.	1.8	0.5	1.3	0.3	.	
I NORM	23.1	13.9	15.6	19.4	19.5	13.2	11.7	13.6	7.7	4.5	15.2	16.1	13.1	17.5	11.4	12.4	45.4	19.8	16.8	
II NORM	22.0	12.5	9.1	6.6	13.0	10.5	6.3	23.0	17.7	43.2	19.8	18.5	24.5	21.2	15.9	22.9	18.5	18.0	20.8	
III NORM	30.5	24.6	30.7	18.8	18.2	29.3	25.1	17.3	18.1	18.0	15.2	15.8	16.7	17.7	17.5	19.7	17.9	19.0	14.6	
MND NORM	75.6	51.0	55.4	44.8	50.7	53.0	43.1	53.9	43.5	65.7	50.2	50.4	54.3	56.4	44.8	55.0	81.8	56.8	52.2	

SEPTEMBER 2003

NEERSLAG 8-8 UUR (MM)

DISTRICT 15

NR	979	980	982
			SCHIN
DAG	ECHT	EPEN	VELD
1	0.7	1.3	0.4
2	.	2.3	1.2
3	.	.	.
4	.	.	.
5	.	.	.
6	0.4	0.4	0.2
7	0.9	1.7	1.4
8	0.4	1.3	0.8
9	.	.	.
10	.	0.2	.
11	7.8	3.5	7.7
12	.	0.2	.
13	0.9	1.6	1.6
14	.	.	.
15	.	.	.
16	.	.	.
17	.	.	.
18	.	.	.
19	.	.	.
20	.	.	.
21	.	.	.
22	.	.	.
23	6.9	9.9	7.1
24	2.1	4.2	1.9
25	.	.	.
26	.	.	.
27	0.1	.	0.6
28	.	.	.
29	4.7	2.4	8.5
30	.	0.7	.
I	2.4	7.2	4.0
NORM	19.3		
II	8.7	5.3	9.3
NORM	23.6		
III	13.8	17.2	18.1
NORM	18.4		
MND	24.9	29.7	31.4
NORM	61.3		

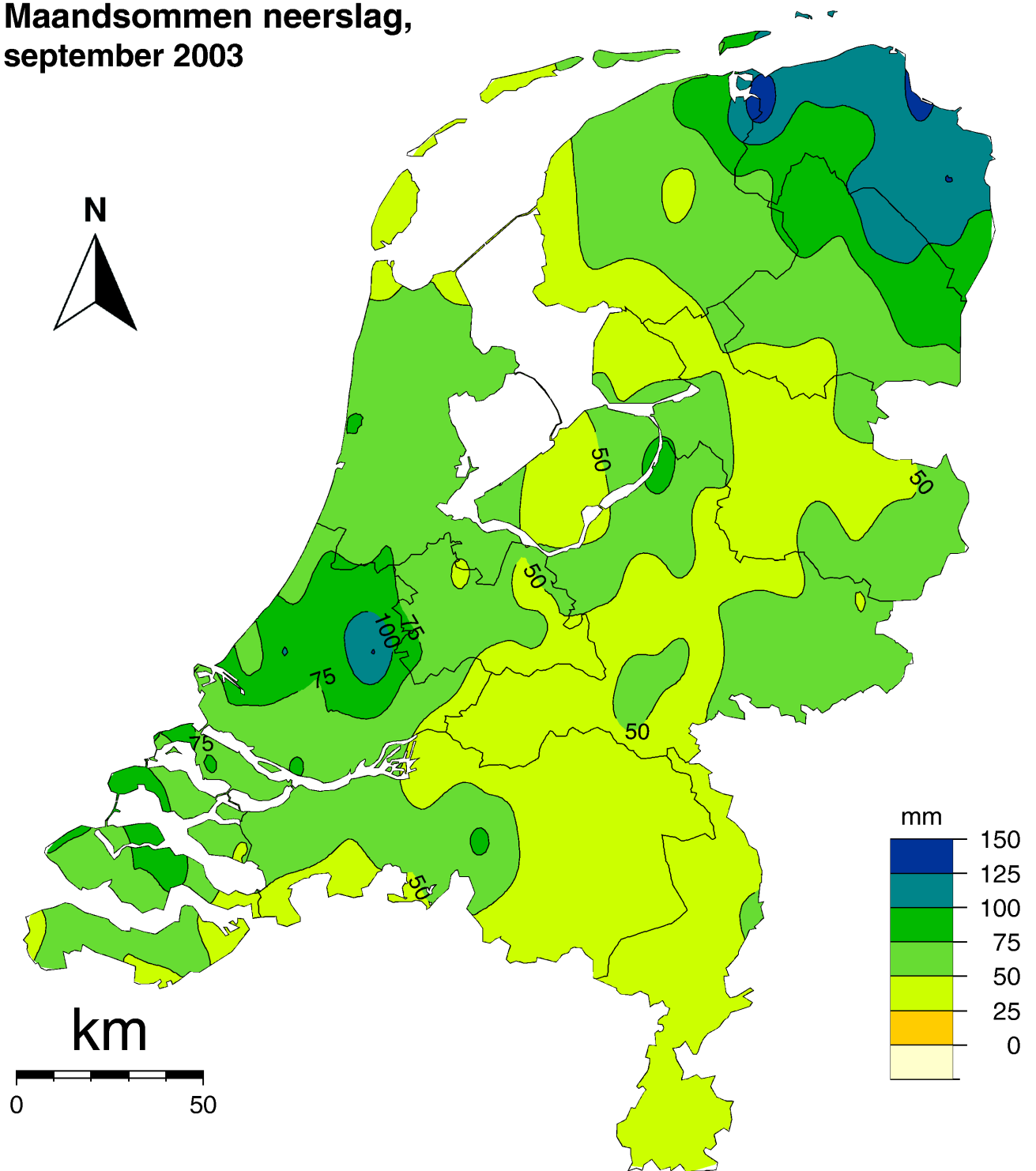
Kaart met meteorologische stations



KNMI Neerslagstations, neerslag 08–08 uur UT



Maandsommen neerslag, september 2003



(c) 2009, KNMI Klimaatdata en -advies



Dit rapport is een uitgave van:

Koninklijk Nederlands Meteorologisch Instituut
Klimaatdata en -advies
Postbus 201 | 3730 AE De Bilt
www.knmi.nl | klimaatdesk@knmi.nl