



Koninklijk Nederlands
Meteorologisch Instituut
Ministerie van Verkeer en Waterstaat

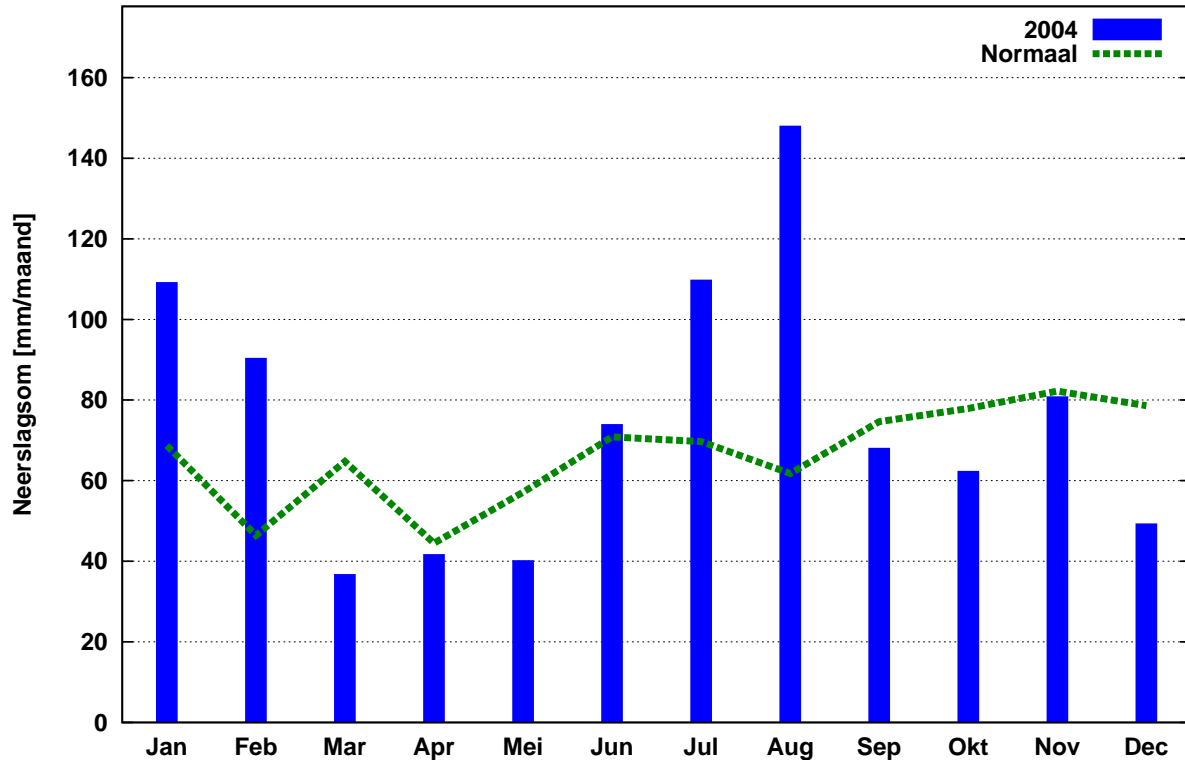
Jaaroverzicht neerslag en verdamping in Nederland

2004



Landelijk gemiddelde maandelijkse neerslagsom in 2004 (gebaseerd op 326 stations)

Jaarsom: 911.4 mm Normaal: 797.1 mm



In het Jaaroverzicht neerslag en verdamping in Nederland (JONV) zijn maandelijkse en jaarlijkse gegevens van neerslag, verdamping, potentieel neerslagoverschot en sneeuwdagen opgenomen. De metingen worden verricht op ca. 325 KNMI-neerslagstations en 25 KNMI meteorologische stations, alwaar uit metingen van temperatuur en straling de referentie-gewasverdamping wordt berekend. Het JONV is ruim 75 jaar uitgegeven als KNMI-periodiek en wordt sinds 2009 verspreid via internet (<http://www.knmi.nl/klimatologie/monv>).

KNMI
Klimaatdata en –advies
Postbus 201
3730 AE De Bilt
e-mail: Klimaatdesk@knmi.nl

2004
 NEERSLAG 8-8 UUR (MM)

NR	DISTRICT 1													DISTRICT 2			
	10	11	12	15	16	17	18	19	21	22	24	25	26	61	64	65	66
MND	HOL LUM	W.TER SCHEL LING	SCHIER MONNIK OOG	OOST VLIE LAND	PETTEN	DEN BURG	NES AME LAND	DE COCKS DORP	CAL LANTS OOG	DE KOOG	VLIE LAND	DE KOOY	FOR MERUM	SKRINS	SNEEK	MAK KUM	HAR LINGEN
JAN	107.4	115.1	103.6	106.1	122.4	109.0	90.4	102.8	104.4	99.5	103.5	109.8	116.8	105.5	101.5	97.5	95.4
FEB	102.7	98.9	95.3	92.0	91.8	87.8	93.2	88.8	81.3	88.4	98.3	77.7	104.0	98.7	101.2	91.9	94.3
MRT	40.1	29.5	27.0	25.7	25.6	18.9	33.2	24.2	19.6	18.8	21.8	21.9	33.9	28.3	28.6	23.9	24.5
APR	32.8	31.2	33.6	35.6	35.0	33.8	32.4	33.9	30.4	31.5	32.5	32.8	39.1	38.3	36.4	32.1	36.5
MEI	25.2	20.2	10.8	17.1	26.4	21.4	20.0	20.3	21.6	20.7	17.7	23.8	21.2	20.0	24.5	19.2	24.6
JUN	90.9	81.2	87.4	63.6	63.9	72.7	85.4	65.6	79.4	61.4	71.8	80.2	94.6	89.2	104.8	66.8	75.6
JUL	151.2	78.5	116.5	93.5	90.2	84.2	110.4	76.3	72.4	64.2	78.5	80.9	90.0	123.8	117.2	101.7	98.9
AUG	157.7	207.0	169.1	201.1	132.3	93.8	186.3	95.8	110.7	89.7	160.9	138.3	190.4	199.1	219.5	206.8	245.2
SEP	92.8	84.9	104.1	80.0	59.1	81.8	93.9	80.5	62.0	75.3	75.5	90.3	90.6	72.4	82.0	55.7	67.2
OKT	63.5	71.3	53.3	63.8	75.7	75.9	54.5	73.9	87.9	78.4	59.5	110.3	61.3	81.7	88.0	87.8	79.8
NOV	85.1	84.2	77.4	83.0	47.8	64.6	75.2	66.5	48.6	70.2	62.7	56.6	92.5	78.7	77.1	60.9	73.3
DEC	68.5	61.6	49.7	59.5	46.2	55.4	52.3	61.4	47.0	52.4	53.7	52.1	70.2	61.1	47.9	50.4	52.4
JAAR	1017.9	963.6	927.8	921.0	816.4	799.3	927.2	790.0	765.3	750.5	836.4	874.7	1004.6	996.8	1028.7	894.7	967.7
NORM	787.3	790.4	792.2	791.2	758.2	791.6	833.8	803.3	821.0	805.0	773.7	774.6		789.4	764.3	781.2	

DISTRICT 2

NR	DISTRICT 2																		
	67	68	69	70	73	75	76	77	78	79	80	81	82	84	85	86	87	89	
MND	DOK KUM	ST ANNA PAR.	APPEL SCHA	OUDE MIRDUM	DRACH TEN	OLDE HOLT FADE	KORN WERDER ZAND	KOLLUM	HER BAYUM	HEEG	STA VOREN	JOURE	GORRE DIJK	EZUMA ZIJL	LEEUE WARDEN	NIJ BEETS	BER GUMER DAM	AK KRUM	
JAN	115.1	118.7	124.5	105.7	122.8	113.5	89.4	118.7	96.3	102.0	86.8	93.5	111.8	104.6	113.5	103.3	117.2	94.8	
FEB	107.2	100.4	104.2	92.8	123.1	108.2	78.4	116.2	87.7	99.6	70.1	100.0	106.3	109.8	99.2	106.1	111.5	112.9	
MRT	31.7	27.1	51.5	32.0	38.9	37.8	20.0	37.0	19.2	31.0	18.9	31.1	41.6	32.3	27.9	32.0	32.4	28.5	
APR	40.1	41.0	51.4	48.7	44.2	44.1	39.1	37.4	39.9	44.2	42.0	43.4	51.1	35.3	42.1	50.6	43.9	41.2	
MEI	16.6	19.8	24.2	28.3	18.2	27.6	24.2	19.0	20.7	22.1	28.3	22.5	23.4	14.3	21.7	19.3	19.0	19.8	
JUN	93.1	72.7	92.4	72.5	111.2	80.4	65.7	93.0	87.7	90.5	61.4	83.4	98.9	93.1	82.9	101.7	98.3	104.5	
JUL	153.1	112.9	155.4	107.8	111.8	112.3	93.9	136.5	93.9	136.4	78.3	99.4	106.0	119.5	139.9	98.1	114.1	103.8	
AUG	204.6	209.9	184.9	179.4	172.6	191.3	196.0	261.1	226.4	195.0	143.9	216.2	218.2	223.6	267.7	172.0	196.6	192.0	
SEP	86.9	83.8	72.6	58.5	83.5	60.5	54.7	95.1	58.4	62.8	44.8	74.2	79.8	90.8	85.2	72.2	86.2	66.0	
OKT	77.5	81.6	62.1	78.7	79.1	80.9	82.2	77.3	76.5	85.6	79.2	67.7	74.8	71.3	88.5	83.8	72.2	72.7	
NOV	84.8	86.7	80.3	69.3	83.0	72.3	63.4	87.7	79.5	72.3	58.3	80.2	83.0	96.6	86.2	78.6	87.2	78.8	
DEC	73.7	74.0	44.3	48.5	57.5	43.9	43.4	62.4	55.8	49.8	40.8	36.9	44.4	76.1	61.9	47.5	61.4	47.1	
JAAR	1084.4	1028.6	1047.8	922.2	1045.9	972.8	850.4	1141.4	942.0	991.3	752.8	948.5	1039.3	1067.3	1116.7	965.2	1040.0	962.1	
NORM	839.8	829.7	867.2	776.7	838.2	843.6	749.5	846.2		809.1	738.0	787.8	841.3	830.5	790.1	792.3	802.6		

DISTRICT 2

DISTRICT 3

NR	DISTRICT 2								DISTRICT 3									
	90	91	166	171	326	338	353		134	135	136	139	140	141	142	143	144	145
MND	EERNE WOUDE	TER NAARD	MARUM	AN JUM	FREDE RIKS OORD	GIET HOORN	BLOK ZIJL		MIDDEL STUM	WOL TER SUM	EZIN GE	GRO NINGEN	ASSEN	DELFT ZIJL	WARF FUM	FINS TER WOLDE	TER APEL	ZOUT KAMP
JAN	96.8	93.6	90.5	93.4	107.1	105.6	110.4		89.2	79.3	86.9	97.7	121.9	100.7	107.7	87.3	127.4	98.3
FEB	109.3	82.9	103.5	97.5	100.1	105.5	110.9		91.0	80.8	100.4	104.1	106.8	92.3	96.6	87.4	97.3	106.2
MRT	27.7	27.6	28.8	25.4	39.8	36.1	41.5		28.3	27.1	27.4	39.4	44.1	34.9	28.5	40.0	37.2	28.7
APR	43.1	37.1	45.2	36.4	45.4	33.1	35.8		29.8	37.7	28.2	40.1	48.7	38.8	38.7	43.0	39.3	36.7
MEI	19.4	17.4	15.7	12.9	48.5	42.1	36.5		12.9	12.2	15.4	13.6	24.5	50.1	12.2	15.4	33.9	14.2
JUN	95.4	88.6	92.8	107.2	103.9	113.8	114.3		83.4	72.2	66.5	87.7	108.5	72.7	88.6	115.0	90.8	86.5
JUL	101.2	130.2	131.2	108.4	94.5	125.9	122.8		105.9	123.0	110.5	139.4	137.4	95.6	102.9	110.1	111.1	113.3
AUG	177.3	180.5	192.6	214.1	166.9	152.0	169.8		138.3	143.0	176.8	175.6	179.5	149.1	158.7	107.9	94.3	175.2
SEP	85.7	85.1	83.8	91.0	66.8	46.5	45.5		84.2	76.1	68.7	73.3	70.6	78.2	94.9	84.3	66.7	92.3
OKT	78.1	73.4	73.3	70.8	61.2	76.7	81.6		62.8	63.0	54.2	72.9	69.4	67.9	63.1	54.4	71.1	59.8
NOV	83.2	69.4	82.4	88.1	76.3	70.9	69.9		89.6	81.0	78.8	89.7	83.7	88.5	86.9	84.6	72.9	89.5
DEC	44.5	52.8	50.5	57.2	43.6	45.5	41.4		43.9	41.6	41.8	48.2	44.1	42.0	51.8	38.7	36.9	48.4
JAAR	961.7	938.6	990.3	1002.4	954.1	953.7	980.4		859.3	837.0	855.6	981.7	1039.2	910.8	930.6	868.1	878.9	949.1
NORM	786.0	806.4	862.3		818.0	804.5	815.4					831.7	819.9	770.9	830.2	755.8	748.7	802.9

DISTRICT 3

NR	147	148	150	151	152	153	154	155	156	158	159	160	161	162	163	164	172	323
MND	VEEN DAM	SAPPE MEER	UIT HUI ZEN	ROODE SCHOOL	GIETER VEEN	WIN SCHO TEN	EENRUM	EEXT	VLAGT WEDDE	ONNEN	NIEUW BUIJEN	VEEN HUI ZEN	EELDE	NIE KERK	RODEN	ZEE RIJP	NIEUW OLDA	LAAG HA LEN
JAN	93.0	107.3	108.7	97.6	97.2	106.8	104.3	117.6	83.1	101.8	106.2	119.7	110.4	103.4	92.4	98.5	101.4	114.1
FEB	97.1	115.0	100.6	94.4	95.4	111.1	107.7	114.3	72.1	119.9	96.1	110.6	111.9	108.2	115.2	87.3	88.2	95.3
MRT	40.9	53.0	29.9	28.3	40.2	45.1	30.4	45.5	28.1	42.1	34.2	46.7	47.4	33.0	42.7	32.2	36.2	38.0
APR	36.7	52.9	41.1	36.5	54.7	49.1	34.2	45.7	59.2	50.1	38.0	44.8	43.3	40.6	52.0	32.7	42.5	48.4
MEI	49.6	25.4	11.2	12.3	27.8	19.8	14.6	37.7	20.3	14.3	18.4	18.0	14.6	13.3	13.8	12.8	26.5	34.4
JUN	105.8	81.2	79.7	80.6	116.0	141.8	92.5	120.1	86.7	87.0	102.7	99.5	106.4	101.1	118.8	79.1	104.7	110.5
JUL	144.2	142.2	112.7	121.2	156.7	131.2	126.4	187.3	121.0	134.5	132.7	136.8	117.6	111.8	109.3	140.7	108.2	135.6
AUG	107.8	110.9	168.2	154.8	133.2	131.7	189.6	138.6	108.2	120.0	127.1	187.1	146.1	231.5	174.5	150.2	117.7	131.9
SEP	69.2	89.6	95.6	102.3	80.5	67.7	88.5	74.8	55.5	78.9	78.4	61.7	90.8	76.6	96.9	84.0	85.9	57.8
OKT	66.1	86.4	61.5	55.8	59.3	65.9	60.7	62.6	67.3	73.5	68.1	65.7	70.6	60.9	87.5	60.8	62.6	101.2
NOV	73.4	100.4	97.2	88.4	72.9	89.7	96.6	84.4	69.3	88.5	71.1	83.6	76.6	75.5	78.8	93.2	91.6	74.4
DEC	37.9	46.4	50.5	40.5	42.2	40.5	47.9	45.7	35.1	42.1	38.5	50.1	51.5	58.0	52.3	50.3	38.8	42.5
JAAR	921.7	1010.7	956.9	912.7	976.1	1000.4	993.4	1074.3	805.9	952.7	911.5	1024.3	987.2	1013.9	1034.2	921.8	904.3	984.1
NORM	744.7	804.3	869.6	773.4	783.6	758.6	822.9	834.5	746.4	767.2	780.5	854.7	781.3	816.8	881.1	825.0		

DISTRICT 3

DISTRICT 4

NR	337	210	217	221	222	223	224	226	227	228	230	233	234	235	236	238	239
MND	SCHOON LOO	BEVER WIJK	HEILOO	ENK HUI ZEN	HOORN	SCHHEL LING WOUDE	EDAM	WIJK A/ZEE	ANNA PAU LOWNA	SCHA GEN	ZAAN DIJK	ZAAN DAM H'BRG	BER GEN	CAS TRICUM	MEDEM BLIK	DE HAUKES	DEN OEVER
JAN	134.9	125.5	120.4	113.9	118.7	114.4	127.1	118.7	112.4	128.2	117.9	121.9	122.8	125.0	127.0	104.6	92.0
FEB	112.5	111.6	90.5	97.5	95.9	123.6	113.9	95.4	92.1	89.7	99.7	104.6	101.1	96.0	101.0	81.7	71.5
MRT	40.3	32.6	28.0	32.9	33.8	43.2	42.3	28.6	25.7	24.2	32.6	42.0	22.1	21.1	32.9	18.0	15.9
APR	42.6	39.6	42.2	43.1	36.2	41.1	39.8	40.8	40.7	40.8	35.0	41.3	36.0	33.2	39.9	37.8	30.7
MEI	41.4	30.6	22.5	35.3	24.6	21.9	28.1	26.3	27.7	23.0	28.2	25.1	29.7	33.7	26.8	20.3	17.8
JUN	103.8	56.0	53.3	71.8	64.8	84.1	74.0	44.3	82.6	82.0	60.5	73.4	64.6	49.6	69.8	73.9	68.4
JUL	133.8	125.1	79.5	101.3	88.5	119.7	123.1	121.4	103.3	84.5	105.8	109.7	92.2	86.2	86.4	90.0	118.0
AUG	142.5	165.9	137.4	165.7	228.2	180.4	217.1	130.9	124.3	124.4	220.0	204.5	155.7	160.3	206.8	122.5	145.1
SEP	56.7	73.2	65.0	63.1	62.8	67.4	62.1	70.2	69.6	70.0	56.5	69.9	66.2	70.3	82.2	63.8	75.3
OKT	86.4	90.5	98.5	80.6	75.6	85.7	87.3	83.0	81.3	80.5	86.1	98.9	100.5	84.5	87.6	77.1	82.3
NOV	86.2	71.4	67.7	60.2	56.0	72.4	65.7	67.3	66.8	55.1	68.1	77.2	60.9	70.4	69.6	62.2	52.0
DEC	49.9	51.1	50.8	43.4	50.7	42.1	30.5	59.0	50.1	47.4	46.3	45.6	48.0	54.7	56.3	44.0	42.1
JAAR	1031.0	973.1	855.8	908.8	935.8	996.0	1011.0	885.9	876.6	849.8	956.7	1014.1	899.8	885.0	986.3	795.9	811.1
NORM	833.1	829.6	840.3	809.3	797.7	897.6	830.9	797.7	780.3	825.1	816.4	868.1	826.2	852.0	805.0	809.1	783.5

DISTRICT 4

DISTRICT 5

NR	240	242	249	251	252	255	257	256	317	344	348	352	356	359	364	365	366
MND	KREI LER OORD	PURMER END	HOOG KARS PEL	WEST BEEM STER	KOL HORN	OBDAM	HOOG WOOD	MARK EN	MARK NESSE	TOLLE BEEK	EMMEL OORD	NA GELE	KUINRE	LEMMER BUMA	DRON TEN	SWIF TER BANT	BID DING HUIZEN
JAN	110.2	134.9	119.5	123.5	119.3	121.6	116.1	115.1	108.7	97.1	106.1	122.2	109.6	101.1	115.0	100.3	112.9
FEB	91.7	116.4	98.8	91.4	88.4	99.8	93.5	107.0	111.5	84.8	108.4	105.2	105.8	93.2	101.6	89.5	113.2
MRT	25.9	39.0	32.2	26.0	25.3	33.5	25.2	35.7	36.4	25.7	30.0	41.9	37.1	32.8	36.8	33.5	41.0
APR	40.6	41.6	41.8	41.5	34.9	38.4	43.9	36.9	37.0	39.7	37.7	36.7	53.5	39.6	36.4	31.9	43.1
MEI	21.1	28.8	33.7	24.9	22.0	25.5	28.1	28.3	30.1	31.8	30.2	36.7	30.1	24.0	42.1	30.2	35.7
JUN	68.2	82.6	70.9	64.3	69.4	57.8	63.9	83.1	105.9	93.6	88.0	109.5	79.3	92.0	101.9	90.5	88.9
JUL	122.2	115.1	77.6	87.1	102.0	96.3	120.0	129.0	124.5	93.4	109.5	130.3	103.7	96.2	159.6	115.1	156.9
AUG	169.6	235.9	198.9	174.7	131.4	179.6	229.3	135.5	189.8	202.2	200.6	192.3	234.3	170.4	153.5	137.1	163.2
SEP	70.3	66.0	57.4	60.8	61.4	81.2	73.2	46.9	49.6	57.3	42.4	50.0	67.2	71.3	62.7	43.4	63.8
OKT	83.0	103.6	77.5	88.6	76.6	86.3	96.7	69.6	77.2	82.5	82.1	71.6	80.9	69.9	63.8	58.4	58.5
NOV	59.5	69.6	61.2	64.8	65.7	61.9	59.9	65.5	63.7	62.9	61.5	69.7	76.1	71.2	79.8	65.2	82.0
DEC	52.2	38.7	53.5	46.6	49.3	53.8	53.5	29.4	34.1	29.9	32.8	36.1	51.8	42.2	43.7	38.9	32.3
JAAR	914.5	1072.2	923.0	894.2	845.7	935.7	1003.3	882.0	968.5	900.9	929.3	1002.2	1029.4	903.9	996.9	834.0	991.5
NORM	740.8	860.4	771.0	829.3	805.4						822.6	783.7	837.1	766.0	820.6	786.3	773.4

DISTRICT 7																	DISTRICT 8	
NR	463	464	467	469	470	473	474	477	479	480	548	559	561	563	572	328	329	
MND	N.HEL VOET	BRIEL LE	POORTU GAAL	LEIDEN	ZEG VELD	R'DAM WH	VALKEN BURG VK	H.VAN H'LAND M'PAD	MAAS LAND	HON SELMERS DIJK	LOENEN A/D VECHT	VLEU TEN	BEN SCHOP	WEESP	AB COUDE	HEERDE	WAPEN VELD	
JAN	95.4	109.1	108.3	109.7	106.2	127.6	101.3	99.3	96.4	101.3	121.0	114.3	119.3	114.6	119.7	114.3	127.8	
FEB	76.6	96.1	90.7	99.9	69.1	91.8	84.4	87.2	75.9	77.2	95.0	82.0	87.9	109.1	98.9	110.5	114.4	
MRT	31.5	43.4	46.9	58.7	55.0	42.6	50.6	47.7	42.5	48.0	54.1	36.2	48.6	42.8	43.7	43.1	47.4	
APR	47.1	53.7	52.3	46.1	35.7	37.9	32.7	39.7	43.3	41.9	28.8	42.4	45.9	38.5	36.6	49.7	44.9	
MEI	31.4	42.4	39.1	31.3	23.2	49.0	28.9	40.0	41.8	44.2	28.6	30.5	35.9	25.3	30.3	50.9	53.8	
JUN	72.3	79.6	65.3	50.2	60.9	65.2	45.6	56.5	69.5	62.2	70.0	73.2	62.6	88.7	65.6	73.3	89.6	
JUL	62.2	74.7	89.2	127.7	133.7	85.5	129.8	87.9	96.0	110.2	142.6	115.2	81.7	139.1	122.1	116.1	144.8	
AUG	176.9	226.4	165.0	180.5	169.8	153.8	210.7	218.3	324.9	225.0	152.9	151.3	147.6	189.1	186.8	148.0	212.5	
SEP	68.8	79.8	81.3	87.6	70.1	81.2	88.0	69.0	88.1	74.9	62.5	67.1	67.5	80.0	90.1	49.4	67.9	
OKT	39.5	53.3	51.4	59.8	51.6	44.4	58.6	48.6	58.0	60.0	81.9	49.5	49.4	76.2	82.1	71.6	67.5	
NOV	78.5	88.1	93.6	85.9	70.0	89.0	76.3	83.5	82.2	77.6	74.6	70.3	80.8	81.5	72.9	81.5	87.8	
DEC	46.1	55.4	49.5	54.0	43.4	48.2	49.7	49.4	43.0	41.9	44.8	41.4	45.4	49.1	46.6	45.5	53.8	
JAAR	826.3	1002.0	932.6	991.4	888.7	916.2	956.6	927.1	1061.6	964.4	956.8	873.4	872.6	1034.0	995.4	953.9	1112.2	
NORM	775.9	837.8	850.5	842.6	792.1	862.0	812.8				838.7	796.0	797.1	810.4	832.3	804.6	828.9	

DISTRICT 8

NR	336	350	509	510	514	523	541	542	543	546	547	550	557	558	560	564	565	567
MND	OLDE BROEK	ELBURG	DOORN	VAAS SEN	EPE	WIJK B/DUUR STEDE	ARNHEM	PUT TEN	APEL DOORN	WOUDEN BERG	NIJ KERK	DE BILT	EER BEEK	LUN TEREN	AME RONGEN	HULS HORST	VOORT HUI ZEN	KOOT WIJK
JAN	123.6	122.2	120.3	138.7	131.6	120.0	117.6	126.6	139.3	125.0	120.6	119.4	130.0	123.8	123.8	118.3	128.5	
FEB	124.6	115.2	93.8	113.7	113.4	90.9	103.2	109.8	126.4	103.9	104.9	93.2	111.9	97.9	89.8	109.1	99.6	109.6
MRT	45.9	44.8	42.4	45.0	42.2	38.7	53.9	41.7	51.8	45.3	39.6	45.4	43.6	40.0	42.7	44.5	41.0	41.0
APR	46.3	42.1	43.8	43.0	40.1	39.4	46.2	49.0	45.3	39.5	44.6	35.8	35.7	42.4	42.4	50.5	51.9	46.2
MEI	44.2	47.1	50.4	52.0	51.9	68.6	43.4	44.8	51.0	33.7	47.7	32.1	58.3	34.3	33.3	59.8	40.7	54.7
JUN	89.5	87.4	61.3	68.7	68.0	62.1	61.3	104.3	76.7	78.4	90.3	72.8	59.8	72.9	45.1	102.1	88.7	69.0
JUL	131.8	180.6	96.4	110.9	127.8	92.3	102.1	103.1	100.4	69.1	113.7	126.0	110.1	90.9	92.7	131.4	102.3	122.8
AUG	134.3	147.4	130.1	124.7	135.7	162.8	85.7	131.8	112.3	118.7	119.3	134.8	107.4	136.7	156.1	147.3	98.7	113.1
SEP	57.1	60.5	75.0	73.6	61.8	84.3	80.1	76.3	69.4	74.1	71.3	67.8	72.6	65.8	67.0	51.7	66.1	89.6
OKT	66.5	56.1	47.7	82.8	78.5	40.3	72.4	70.6	66.2	43.6	66.0	51.6	68.8	55.2	48.7	68.2	64.3	64.5
NOV	84.1	88.7	85.0	97.0	92.8	90.4	95.2	87.2	90.5	84.6	78.3	83.2	93.5	84.8	81.0	77.4	89.3	95.6
DEC	47.8	42.9	49.1	51.4	49.0	47.0	54.0	45.7	53.5	49.8	48.9	48.3	65.9	47.6	39.8	47.4	40.1	46.0
JAAR	995.7	1035.0	895.3	1001.5	992.8	936.8	915.1	990.9	982.8	865.7	945.2	910.4	957.6	889.4	852.3	1013.2	901.0	980.6
NORM	830.3	731.2		875.5	853.3	735.8	866.9	877.8	908.6	822.5	779.4	828.9	861.9	833.6	817.3	804.1	824.0	863.1

DISTRICT 8

DISTRICT 9

NR	570	571	573	576	578	579	580	582	583	591	593	595	596	588	645	663	666
MND	ELS PEET	HARS KAMP	BEEK BERGEN	SPA KEN BURG	OOSTER BEEK	VEE NEN DAAL	BARNE VELD	HA MERS VELD	WAGE NINGEN PD	DEE LEN	LAREN	SOEST	EEMNES	DUI VEN	HENGE LO (GLD)	LOCHEM	WIN TERS WIJK
JAN	131.8	107.3	140.4	130.0	117.9	110.0	111.6	122.5	123.8	130.3	128.9	116.3	120.3	115.5	103.4	110.0	108.6
FEB	107.8	89.0	120.6	105.9	105.0	84.6	90.6	104.3	104.1	99.6	111.5	101.5	102.4	84.2	81.3	89.0	62.0
MRT	42.2	34.0	44.3	39.7	45.3	39.2	41.3	42.5	44.7	54.0	45.0	42.4	37.3	40.5	36.1	37.6	35.9
APR	43.4	49.3	41.6	42.3	47.1	39.0	49.1	40.2	38.6	49.9	45.0	44.4	52.4	24.6	29.7	46.5	45.9
MEI	44.7	47.7	52.7	44.3	46.4	32.5	37.1	39.7	47.6	55.6	33.4	42.7	40.2	50.5	50.6	87.4	99.5
JUN	91.6	78.0	62.2	84.3	71.0	56.4	76.5	81.3	63.9	77.5	86.2	122.1	97.9	69.7	85.0	61.9	59.7
JUL	115.2	123.9	100.7	104.8	100.1	78.6	121.2	87.1	110.1	87.8	114.3	132.9	124.9	101.4	116.2	125.9	129.4
AUG	141.9	103.4	103.5	165.4	105.9	155.7	105.6	108.7	104.7	114.6	174.9	128.3	167.9	103.0	88.6	121.1	75.2
SEP	61.8	72.8	78.0	64.3	66.9	71.9	64.6	61.4	74.3	83.9	68.4	64.7	50.0	72.7	58.4	48.4	58.8
OKT	80.1	57.3	66.4	61.5	68.5	59.6	55.3	50.4	58.6	75.4	70.1	66.9	69.2	57.8	45.3	53.4	44.8
NOV	93.6	86.8	99.3	82.6	86.7	81.8	85.2	88.6	88.0	99.5	82.0	94.7	71.8	79.3	92.8	89.7	80.0
DEC	51.1	36.3	52.1	41.9	49.7	45.6	46.8	50.4	44.1	65.2	45.2	54.2	45.7	48.0	51.3	49.4	53.0
JAAR	1005.2	885.8	961.8	967.0	910.5	854.9	884.9	877.1	902.5	993.3	1004.9	1011.1	980.0	847.2	838.7	920.3	852.8
NORM	902.3	824.9	938.6	782.2	871.4	798.3	848.2	871.0	799.9	860.5				783.8		772.7	781.0

2004
NEERSLAG 8-8 UUR (MM)

NR	DISTRICT 9												DISTRICT 10				
	667	669	673	674	678	679	680	682	683	684	686	688	434	465	539	549	562
MND	DOETIN CHEM	BOR CULO	GEN DRIN GEN	REKKEN	ALMEN	HERWEN	AAL TEN	MAR KELO	LICH TEN VOORDE	LIE VELDE	WOOLD	HUP SEL	GROOT AMMERS	OUD AL BLAS	NIJ MEGEN	CULEM BORG	TIEL
JAN	127.4	107.0	120.2	91.9	98.4	116.0	142.3	92.0	125.9	107.7	163.6	102.2	112.9	122.3	120.1	114.2	109.3
FEB	83.8	92.5	75.7	71.8	78.7	92.4	82.1	84.4	88.0	78.4	90.8	79.7	87.1	93.5	86.1	80.3	89.6
MRT	38.5	38.0	39.5	32.1	33.1	46.6	39.9	30.8	40.8	27.6	46.9	29.6	44.7	46.3	45.0	42.9	45.8
APR	34.3	53.7	28.6	42.8	39.5	36.1	45.4	40.4	54.4	44.6	59.3	46.9	40.7	47.6	36.8	33.0	46.0
MEI	55.8	69.5	73.5	79.2	82.5	55.1	73.5	51.8	50.7	68.6	68.0	66.3	84.1	44.4	55.0	53.4	41.2
JUN	62.6	72.7	37.0	46.5	61.4	52.7	66.0	60.9	61.2	53.2	94.9	65.1	61.1	58.0	65.2	52.7	54.6
JUL	89.4	107.6	105.4	114.3	122.8	126.8	122.9	138.7	104.2	104.6	126.6	106.5	86.8	98.7	123.8	88.1	90.8
AUG	84.8	103.4	96.2	102.6	114.9	73.1	170.5	112.6	130.5	128.5	115.8	117.7	130.6	145.1	96.4	180.0	125.0
SEP	74.7	60.0	66.3	64.7	45.9	63.0	81.4	58.4	67.0	68.5	89.6	61.5	62.9	80.4	69.2	80.7	74.4
OKT	54.2	50.9	52.8	37.2	56.3	65.2	55.2	69.9	44.6	46.5	62.4	34.9	44.3	40.5	53.6	39.6	57.2
NOV	79.1	83.2	82.8	79.5	76.3	88.1	97.9	85.4	82.6	85.4	101.6	80.9	86.7	84.6	86.2	73.8	77.2
DEC	50.8	51.2	51.8	46.4	51.4	58.8	59.6	42.6	50.7	59.5	63.7	56.2	44.2	47.1	56.2	43.5	45.1
JAAR	835.4	889.7	829.8	809.0	861.2	873.9	1036.7	867.9	900.6	873.1	1083.2	847.5	886.1	908.5	893.6	882.2	856.2
NORM	796.7	774.6	697.0	757.4	768.0	756.6	788.1	806.4	771.2				819.6	827.1	745.7	756.5	765.9

NR	DISTRICT 10										DISTRICT 11							
	569	584	589	830	835	836	840	910	917		446	447	462	471	705	733	735	736
MND	HEU MEN	GELDER MALSEN	ZET TEN	HER WIJNEN	ANDEL	GORIN CHEM	NIEU WEN DIJK	AMMER ZODEN	ZALT BOMMEL		GOEDE REEDE	DEN BOMMEL	DIRKS LAND	OUD DORP POLDER	BRES KENS	V LIS SINGEN	KAPEL LE	BROU WERS HAVEN
JAN	121.7	120.1	107.9	117.8	115.8	125.7	115.1	105.1	104.1		102.1	100.2	96.8	98.1	100.2	111.8	125.9	108.4
FEB	91.5	82.8	90.4	94.1	94.9	96.8	95.0	80.9	73.0		79.4	99.6	77.2	79.0	69.4	70.0	71.9	69.4
MRT	41.9	42.1	41.3	45.0	44.2	47.6	40.7	41.1	40.6		34.0	37.4	29.8	32.2	22.5	21.6	30.2	26.1
APR	38.9	48.8	35.4	39.9	52.4	48.7	37.4	45.0	38.8		34.9	32.0	43.2	36.0	22.7	22.2	46.2	38.9
MEI	51.9	54.5	50.2	51.3	43.3	74.1	43.6	57.9	55.6		37.6	35.4	34.5	32.5	32.0	40.6	54.5	32.8
JUN	66.2	55.9	54.4	50.9	50.2	73.4	63.7	50.1	48.0		76.6	58.0	55.7	75.6	59.5	64.3	84.3	68.7
JUL	155.9	93.6	121.4	103.9	77.4	119.6	100.0	90.9	102.9		76.7	85.8	68.6	75.4	71.0	54.4	99.5	77.2
AUG	97.7	150.1	96.1	131.3	116.6	109.3	132.8	84.8	87.1		237.2	132.7	159.8	174.4	141.0	139.3	118.9	236.3
SEP	60.9	60.9	71.2	60.3	72.8	81.2	73.8	62.9	71.6		88.7	62.2	83.1	74.2	32.5	33.0	48.8	51.2
OKT	71.7	45.9	56.6	36.9	44.4	38.6	43.5	39.1	34.0		40.3	28.8	40.2	44.7	64.8	46.7	51.5	47.2
NOV	84.7	79.1	77.9	81.7	84.5	89.3	83.5	76.5	80.4		78.8	80.8	76.3	82.7	78.6	86.7	100.3	76.7
DEC	59.7	48.5	40.0	43.3	47.9	48.4	51.5	47.3	42.7		49.4	44.2	42.9	53.2	41.6	43.4	57.0	41.3
JAAR	942.7	882.3	842.8	856.4	844.4	952.7	880.6	781.6	778.8		935.7	797.1	808.1	858.0	735.8	734.0	889.0	874.2
NORM	743.8	783.9	778.1	787.0	791.5	790.3	805.9	764.0	775.3		783.2	800.0	796.9	753.2		759.4	812.3	749.9

NR	DISTRICT 11																	
	737	738	740	741	742	743	744	746	747	749	750	751	752	754	755	756	757	758
MND	KERK WERVE	BIER VLIET	ST KRUIS	STAVE NISSE	TER NEU ZEN	NOORD GOUWE	ANNA JACOBA POLDER	WEST KAPEL LE	KRAB BEN DIJKE	WILHEL MINA DORP	RIL LAND	VROU WEN POLDER	HAAM STEDE	OVE ZANDE	KORT GENE	MIDDEL BURG	THOLEN	WOL PH'RTS DIJK
JAN	102.7	109.2	107.1	111.0	101.4	96.8	103.0	120.3	111.9	124.9	102.8	113.7	94.6	116.7	107.7	114.1	126.8	110.7
FEB	71.0	71.8	92.1	79.6	78.8	62.1	84.6	67.8	70.1	72.1	68.2	71.2	57.2	80.2	62.6	72.3	81.8	68.9
MRT	26.6	23.7	29.4	41.7	22.2	32.8	35.1	36.1	33.3	33.0	24.7	31.7	21.8	31.3	25.6	23.2	34.1	27.4
APR	38.2	31.0	34.9	42.2	39.9	44.8	37.2	29.8	35.1	42.9	42.1	32.8	28.8	32.6	42.9	23.7	36.4	45.5
MEI	30.5	42.8	32.5	36.8	49.0	31.6	42.0	29.4	56.8	44.2	51.9	24.9	25.8	61.3	28.7	38.2	36.7	31.8
JUN	62.9	78.1	54.4	61.9	70.8	56.0	62.5	50.4	73.8	69.8	64.2	60.8	72.0	66.7	62.6	56.0	62.2	76.5
JUL	71.5	90.1	95.8	87.7	84.1	99.4	72.7	69.8	81.9	88.7	73.9	93.0	81.8	74.9	87.3	57.4	85.5	92.9
AUG	225.0	121.3	135.3	139.0	138.7	176.9	121.7	165.3	160.8	144.1	114.7	160.0	214.6	96.6	139.2	179.7	125.5	135.9
SEP	62.2	29.3	58.6	70.7	24.5	62.6	73.0	33.9	49.2	50.9	48.7	52.6	60.2	32.7	62.2	36.6	58.1	33.8
OKT	47.8	60.0	63.2	37.8	55.0	47.1	45.4	54.6	51.7	56.0	38.4	49.4	48.1	52.4	56.6	49.2	41.7	49.9
NOV	82.2	74.5	65.0	89.7	71.2	76.7	93.2	81.6	87.5	95.9	88.0	89.0	84.0	83.7	87.9	84.0	93.9	92.6
DEC	44.2	46.8	49.6	54.2	50.5	42.1	42.0	47.2	49.4	55.6	50.5	53.3	47.6	47.0	43.8	45.3	53.4	53.7
JAAR	864.8	778.6	817.9	852.3	786.1	828.9	812.4	786.2	861.5	878.1	768.1	832.4	836.5	776.1	807.1	779.7	836.1	819.6
NORM	751.5	767.0	791.7	799.7	766.4	720.1	794.1	733.2	788.0	805.2	776.3	795.1	766.0	811.5	763.8	762.0	791.0	798.6

2004
NEERSLAG 8-8 UUR (MM)

DISTRICT 15

NR	962	963	965	966	968	969	971	973	974	979	980	982
MND	UBACHS BERG	VAL KEN BURG	SCHAES BERG	SCHIN NEN	VAALS	STEIN	NOOR BEEK	BEEK	BUCH TEN	ECHT	EPEN	SCHIN VELD
JAN	91.7	111.0	102.3	104.8	122.5	101.9	99.7	98.2	78.9	73.9	117.3	91.0
FEB	49.9	63.5	59.2	64.0	77.5	63.0	63.7	56.1	38.8	49.5	73.6	50.1
MRT	40.6	45.2	40.7	42.6	44.9	34.6	34.5	33.3	30.8	25.0	44.5	33.0
APR	47.8	46.7	43.1	68.9	61.8	44.1	51.7	49.5	42.0	39.0	61.2	46.7
MEI	77.6	68.4	46.7	54.4	95.7	44.3	81.3	59.9	36.1	32.6	81.3	45.4
JUN	69.2	68.9	63.4	58.4	84.7	45.0	64.6	52.9	50.9	80.3	84.1	49.3
JUL	114.3	99.3	98.3	106.0	113.5	118.9	131.9	97.3	112.7	112.4	128.1	119.6
AUG	97.4	106.6	117.7	117.0	134.6	85.6	142.6	103.7	90.9	76.1	160.7	116.3
SEP	66.9	85.8	71.5	75.1	91.4	109.0	89.9	79.1	74.6	59.6	90.7	66.4
OKT	62.4	63.6	58.3	66.4	50.3	54.4	64.3	52.0	54.1	47.0	48.9	62.0
NOV	79.7	92.6	89.2	93.1	105.8	92.5	95.8	90.5	79.2	83.1	94.5	91.2
DEC	53.3	60.6	54.6	65.8	57.6	64.0	51.9	60.6	56.6	56.7	56.4	49.0
JAAR	850.8	912.2	845.0	916.5	1040.3	857.3	971.9	833.1	745.6	735.2	1041.3	820.0
NORM	812.0	843.0	780.0	818.4	904.8	776.2	814.6	751.9	733.7	696.8		

NR	270	277	286	249	269	279	210	240	275	290	344	356	283	323	319	350	370	375	377	391
MND	LEEU WARDEN	LAU WERS OOG	NIEUW BEERTA	BERK HOUT	LELY STAD	HOOGVALKEN VEEN	SCHIP BURG	SCHIP HOL	DEE LEN	TWENTE	R'DAM	HER WIJNEN	WILHELM HUP MINA SEL	DORP	WEST DORPE	GILZE RIJEN	EIND HOVENVOLKEL	ELL	ARCEN	
JAN	6.8	6.8	7.3	6.9	7.0	7.1	7.3	7.2	6.5	6.9	7.0	7.3	6.7	8.3	8.2	7.4	7.1	7.6	7.8	7.4
FEB	14.7	15.8	14.3	14.6	15.4	14.7	15.5	14.8	14.3	14.3	14.9	14.7	15.2	18.3	17.2	14.7	15.1	14.9	14.0	14.1
MRT	35.3	37.2	34.0	35.6	35.2	33.7	40.5	36.3	33.7	35.0	35.8	36.3	35.4	39.6	37.8	36.6	38.4	37.3	38.3	39.8
APR	66.5	69.1	65.0	64.2	66.1	64.8	63.9	63.4	62.1	66.8	60.7	62.1	65.6	65.8	62.0	59.5	63.3	63.7	64.1	62.7
MEI	85.9	92.0	83.6	87.1	88.2	78.1	92.0	87.8	77.6	75.9	89.8	87.8	78.2	91.9	86.8	86.6	85.5	85.4	84.0	82.6
JUN	84.6	90.1	87.4	88.2	88.8	88.7	98.0	92.8	87.2	85.9	93.3	93.6	87.7	99.0	96.5	89.3	88.3	88.3	90.8	88.8
JUL	95.8	97.6	87.9	97.7	93.3	91.2	102.4	96.3	88.4	89.2	96.8	93.6	92.5	97.6	92.0	89.7	88.6	90.0	93.0	91.1
AUG	81.8	83.6	84.6	80.2	81.5	83.6	83.6	81.7	82.9	84.4	82.5	85.9	84.6	82.4	80.9	86.6	86.9	86.2	86.9	86.8
SEP	59.1	58.4	59.2	58.8	61.4	61.8	59.2	59.8	59.2	60.3	57.0	58.6	61.5	58.7	58.5	57.7	61.4	61.3	63.3	61.2
OKT	28.7	27.6	28.8	28.8	28.6	28.4	30.3	29.4	28.3	30.1	30.4	30.2	30.1	31.4	30.2	29.9	30.8	30.7	33.7	32.0
NOV	9.2	9.5	10.8	9.5	10.2	10.5	10.2	9.6	9.8	10.9	10.3	10.2	10.9	11.1	11.9	10.4	10.8	11.2	11.9	10.9
DEC	5.1	5.8	5.2	6.2	5.4	5.5	6.4	5.8	5.8	5.9	6.4	6.6	6.1	7.4	7.4	6.7	6.8	6.2	7.1	6.0
JAAR	573.5	593.5	568.1	577.8	581.1	568.1	609.3	584.9	555.8	565.6	584.9	586.9	574.5	611.5	589.4	575.1	583.0	582.8	594.9	583.4

REFERENTIE
GEWASVERDAMPING (MM)DOORLOPEND POTENTIEEL
NEERSLAGOVERSCHOT (MM)

AANTAL SNEEUWDEKDAGEN

NR	235	280	260	310	380	NR	235	280	260	310	380	NR	025	161	550	733	973
MND	DE KOOY	EELDE	DE BILT	VLIS SINGEN	BEEK	MND	DE KOOY	EELDE	DE BILT	VLIS SINGEN	BEEK	MND	DE KOOY	EELDE	DE BILT	RIT THEM	BEEK
JAN	6.9	6.8	7.0	9.5	7.1	JAN	6.9	6.8	7.0	9.5	7.1	JAN	5	2	6	2	8
FEB	14.9	15.1	15.1	19.6	14.8	FEB	14.9	15.1	15.1	19.6	14.8	FEB	5	2	4	4	5
MRT	37.6	33.4	33.7	41.2	41.4	MRT	37.6	33.4	33.7	41.2	41.4	MRT	1	.	.	2	3
APR	65.9	65.4	62.4	67.6	61.9	APR	-36	-24	-29	-38	-1	APR	-36	-24	-29	-38	-1
MEI	87.7	84.8	86.7	92.4	84.5	MEI	-101	-80	-85	-108	-41	MEI	-101	-80	-85	-108	-41
JUN	92.0	85.0	86.6	105.8	92.1	JUN	-118	-71	-102	-145	-89	JUN	-118	-71	-102	-145	-89
JUL	101.6	92.0	91.2	105.1	95.5	JUL	-117	-60	-71	-197	-80	JUL	-117	-60	-71	-197	-80
AUG	79.8	83.7	83.5	85.5	85.8	AUG	-59	-3	-28	-145	-64	AUG	-59	-3	-28	-145	-64
SEP	59.9	61.5	58.1	64.2	63.5	SEP	-43	18	-23	-174	-61	SEP	-43	18	-23	-174	-61
OKT	31.0	28.2	29.3	32.6	33.9	OKT	10	51	-5	-152	-49	OKT	10	51	-5	-152	-49
NOV	9.8	10.4	9.8	12.5	12.7	NOV	9.8	10.4	9.8	12.5	12.7	NOV	2
DEC	6.4	5.1	5.4	8.1	8.0	DEC	6.4	5.1	5.4	8.1	8.0	DEC	1	2	.	.	3
JAAR	593.5	571.4	568.8	644.1	601.2	JAAR	593.5	571.4	568.8	644.1	601.2	JAAR	593.5	571.4	568.8	644.1	601.2

SNEEUWDEK DAG IS EEN DAG WAAROP
EEN SNEEUWDEK IS GECONSTATEERD OM 08.00 UUR

NEERSLAGGEMIDDELDEN PER DISTRICT (MM)

	D1	D2	D3	D4	D5	D6	D7	D8
JAAR	876.5	985.8	949.2	923.1	947.8	954.5	948.7	950.5
NORM	793.5	808.4	801.6	817.9	794.9	787.2	832.1	836.0
	D9	D10	D11	D12	D13	D14	D15	LAND
JAAR	885.4	870.6	816.0	824.4	862.0	830.0	880.8	911.6
NORM	771.1	781.1	779.9	803.4	764.8	729.0	793.1	798.6

HOOGSTE JAARSOM 1141.4 MM TE
77 KOLLUM

LAAGSTE JAARSOM 734.0 MM TE
733 RITTHEM

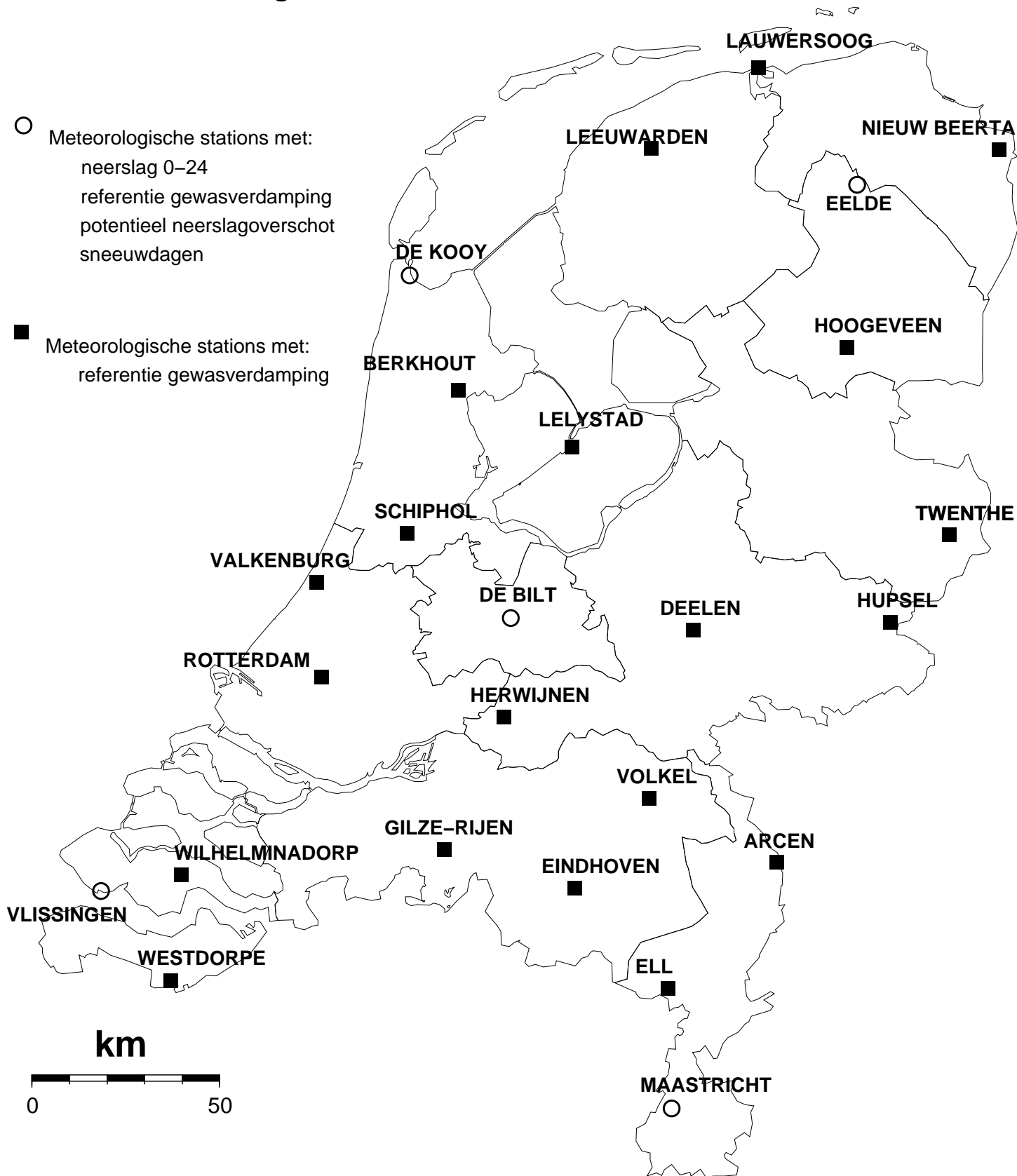
HOOGSTE MAANDSOM 324.9 MM IN
AUGUSTUS TE 479 MAASLAND

LAAGSTE MAANDSOM 10.8 MM IN
MEI TE 12 SCHIERMONNIKOOG

HOOGSTE DAGSOM 98.9 MM OP
13/08 TE 162 NIEKERK

NORMALEN: TIJDVAK 1971-2000

Kaart met meteorologische stations

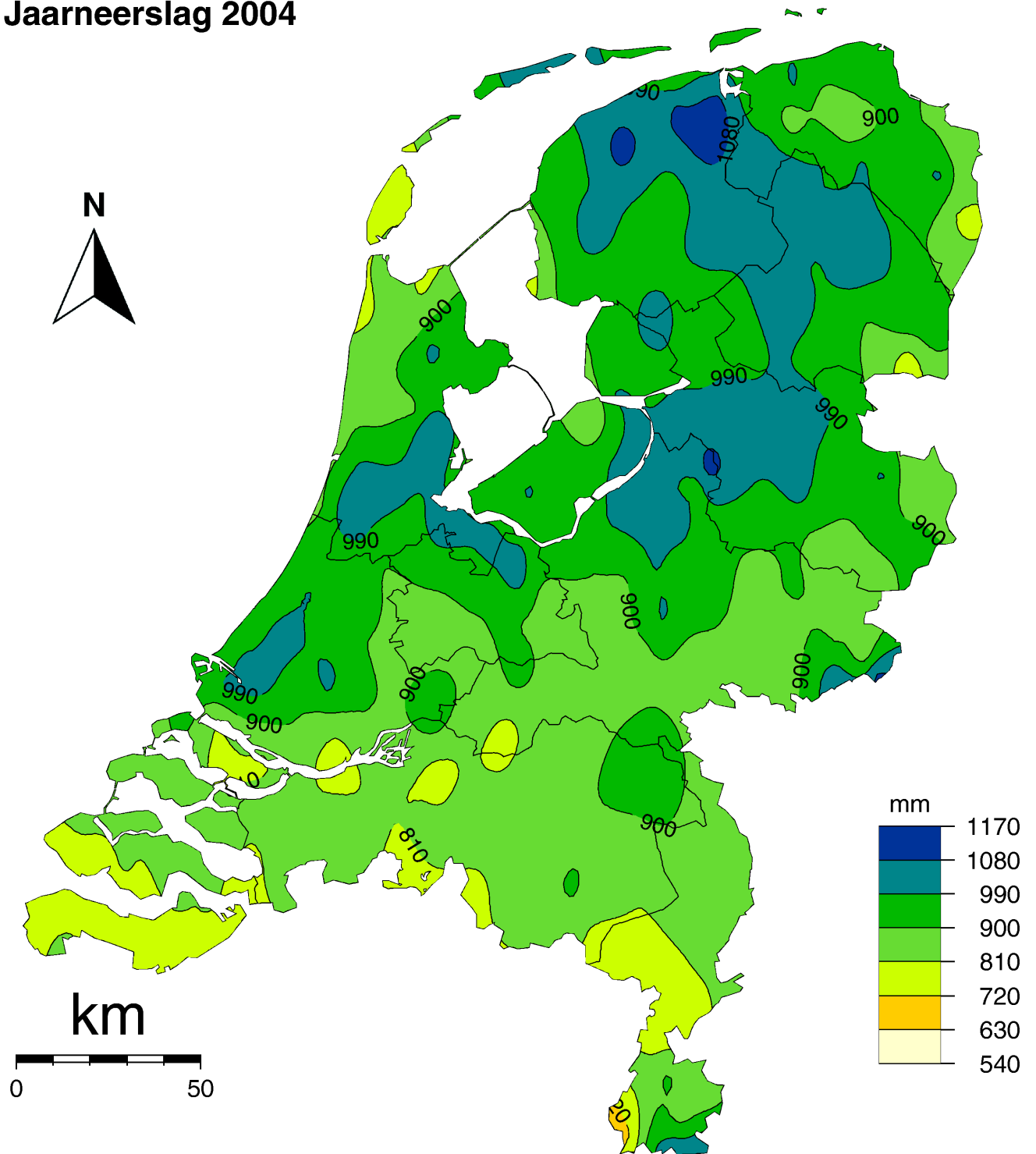


KNMI Neerslagstations, neerslag 08–08 uur UT



(c) 2009, KNMI Klimaatdata en –advies

Jaarneerslag 2004



(c) 2009, KNMI Klimaatdata en -advies



Dit rapport is een uitgave van:

Koninklijk Nederlands Meteorologisch Instituut
Klimaatdata en -advies
Postbus 201 | 3730 AE De Bilt
www.knmi.nl | klimaatdesk@knmi.nl