



Koninklijk Nederlands
Meteorologisch Instituut
Ministerie van Verkeer en Waterstaat

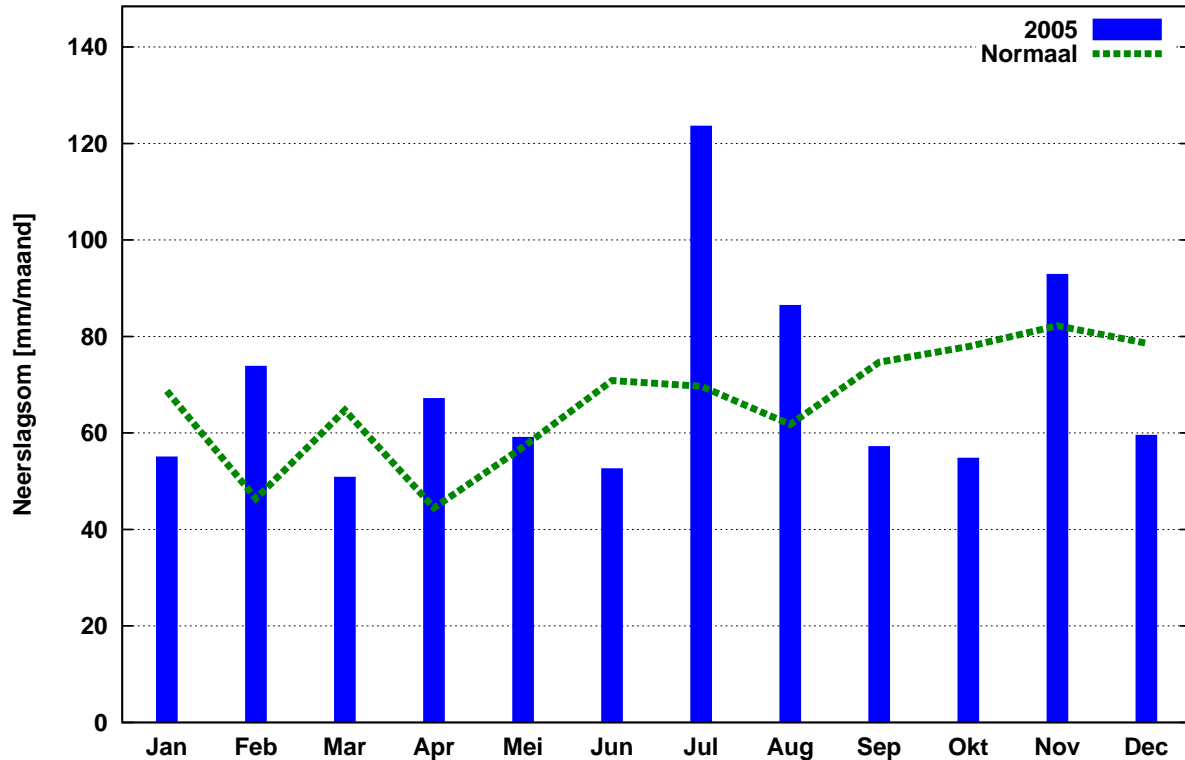
Jaaroverzicht neerslag en verdamping in Nederland

2005



Landelijk gemiddelde maandelijkse neerslagsom in 2005 (gebaseerd op 326 stations)

Jaarsom: 834.0 mm Normaal: 797.1 mm



In het Jaaroverzicht neerslag en verdamping in Nederland (JONV) zijn maandelijkse en jaarlijkse gegevens van neerslag, verdamping, potentieel neerslagoverschot en sneeuwdagen opgenomen. De metingen worden verricht op ca. 325 KNMI-neerslagstations en 25 KNMI meteorologische stations, alwaar uit metingen van temperatuur en straling de referentie-gewasverdamping wordt berekend. Het JONV is ruim 75 jaar uitgegeven als KNMI-periodiek en wordt sinds 2009 verspreid via internet (<http://www.knmi.nl/klimatologie/monv>).

KNMI
Klimaatdata en –advies
Postbus 201
3730 AE De Bilt
e-mail: Klimaatdesk@knmi.nl

2005
NEERSLAG 8-8 UUR (MM)

| DISTRICT 14 | | DISTRICT 15 | | | | | | | | | | | | |
|-------------|--------|----------------|--------------------|----------------|--------------|-------|-------|--------------|-------|-------------|-------|-------|-----------------------|---------------|
| NR | 977 | 962 | 963 | 965 | 966 | 968 | 969 | 971 | 973 | 974 | 979 | 980 | 981 | 982 |
| MND | REUVER | UBACHS BERG | VAL KEN BURG | SCHAES BERG | SCHIN NEN | VAALS | STEIN | NOOR BEEK | BEEK | BUCH TEN | ECHT | EPEN | OOST- MAAR LAND | SCHIN VELD |
| JAN | 59.3 | 67.3 | 67.9 | 64.5 | 67.8 | 86.6 | 59.0 | 57.7 | 58.6 | 50.7 | 44.0 | 63.4 | 55.7 | 51.0 |
| FEB | 59.3 | 74.1 | 86.1 | 80.7 | 80.4 | 112.6 | 71.4 | 91.6 | 75.6 | 62.3 | 55.5 | 103.4 | 73.1 | 69.7 |
| MRT | 52.1 | 41.3 | 43.8 | 40.6 | 41.6 | 44.2 | 41.3 | 42.2 | 46.6 | 36.3 | 36.4 | 41.7 | 37.5 | 51.9 |
| APR | 56.7 | 44.0 | 50.8 | 68.0 | 54.7 | 66.3 | 45.7 | 62.7 | 53.1 | 43.8 | 44.2 | 59.5 | 53.6 | 52.0 |
| MEI | 52.5 | 63.3 | 60.0 | 52.5 | 48.8 | 57.7 | 54.5 | 49.1 | 48.1 | 52.7 | 41.7 | 57.9 | 55.6 | 47.9 |
| JUN | 76.2 | 42.0 | 56.1 | 57.8 | 42.9 | 49.0 | 44.4 | 40.9 | 44.2 | 43.3 | 49.1 | 33.0 | 49.1 | 53.9 |
| JUL | 131.3 | 92.9 | 90.8 | 108.5 | 87.7 | 80.3 | 89.2 | 91.6 | 75.1 | 93.9 | 92.7 | 94.7 | 106.8 | 125.2 |
| AUG | 70.2 | 79.7 | 98.6 | 64.2 | 67.3 | 82.1 | 71.0 | 92.1 | 73.2 | 66.6 | 59.2 | 97.2 | 91.9 | 48.7 |
| SEP | 29.6 | 34.3 | 35.3 | 32.4 | 30.2 | 52.8 | 30.0 | 52.0 | 26.1 | 27.7 | 22.4 | 60.5 | 47.9 | 28.8 |
| OKT | 60.6 | 64.3 | 59.2 | 72.1 | 74.2 | 70.6 | 76.6 | 67.4 | 73.0 | 69.4 | 70.9 | 61.6 | 53.9 | 55.7 |
| NOV | 67.9 | 53.3 | 56.1 | 64.1 | 71.5 | 61.9 | 58.5 | 60.6 | 49.7 | 57.8 | 46.4 | 56.2 | 54.5 | 53.2 |
| DEC | 47.1 | 53.3 | 60.0 | 50.2 | 58.2 | 68.9 | 48.1 | 60.4 | 44.0 | 47.4 | 37.7 | 66.1 | 47.4 | 44.2 |
| JAAR | 762.8 | 709.8 | 764.7 | 755.6 | 725.3 | 833.0 | 689.7 | 768.3 | 667.3 | 651.9 | 600.2 | 795.2 | 727.0 | 682.2 |
| NORM | 734.4 | 810.3 | 841.1 | 778.2 | 816.5 | 902.7 | 774.4 | 813.0 | 750.2 | 732.1 | 695.3 | | | |

| NR | 270 | 277 | 286 | 249 | 269 | 279 | 210 | 240 | 275 | 290 | 344 | 356 | 283 | 323 | 319 | 350 | 370 | 375 | 377 | 391 |
|------|----------------|--------------------|-----------------|--------------|--------------|--------------------|---------------|--------------|------------|--------|-------|---------------|-------------------------------|--------------|----------------|---------------------|-------|-------|-------|-------|
| MND | LEEU WARDEN | LAU WERS OOG | NIEUW BEERTA | BERK HOUT | LELY STAD | HOOGVALKEN VEEN | SCHIP BURG | SCHIP HOL | DEE LEN | TWENTE | R'DAM | HER WIJNEN | WILHELM HUP MINA SEL | WEST DORP | GILZE RIJEN | EIND HOVENVOLKEL | ELL | ARCEN | | |
| JAN | 9.6 | 9.1 | 9.3 | 11.4 | 11.1 | 9.8 | 11.2 | 10.6 | 9.7 | 9.1 | 11.2 | 11.1 | 9.8 | 12.2 | 11.5 | 10.6 | 10.7 | 10.8 | 11.9 | 10.7 |
| FEB | 13.0 | 12.5 | 12.9 | 14.2 | 14.6 | 13.2 | 14.7 | 14.1 | 14.6 | 12.8 | 15.2 | 15.9 | 13.8 | 16.2 | 16.0 | 14.4 | 15.1 | 14.9 | 15.0 | 14.3 |
| MRT | 33.8 | 32.5 | 32.4 | 35.4 | 34.0 | 32.4 | 34.3 | 33.2 | 33.7 | 34.2 | 32.6 | 34.3 | 33.9 | 33.9 | 34.2 | 33.0 | 35.4 | 36.4 | 36.8 | 35.8 |
| APR | 64.0 | 64.8 | 65.4 | 62.4 | 64.3 | 63.4 | 63.2 | 63.0 | 59.3 | 62.8 | 61.9 | 62.5 | 62.2 | 59.1 | 54.7 | 58.9 | 58.5 | 60.0 | 57.5 | 58.2 |
| MEI | 85.4 | 88.2 | 83.7 | 86.6 | 87.4 | 85.2 | 89.6 | 87.1 | 84.2 | 87.1 | 86.6 | 87.4 | 88.6 | 90.5 | 88.8 | 88.5 | 88.2 | 89.6 | 91.3 | 89.6 |
| JUN | 99.4 | 101.2 | 103.3 | 104.5 | 104.4 | 104.0 | 110.0 | 106.4 | 104.2 | 105.3 | 109.3 | 110.2 | 106.7 | 115.0 | 111.5 | 109.5 | 111.1 | 108.6 | 111.1 | 106.8 |
| JUL | 82.1 | 83.6 | 87.3 | 84.8 | 84.3 | 87.2 | 91.0 | 86.5 | 86.2 | 88.9 | 91.8 | 90.9 | 91.3 | 91.6 | 89.6 | 88.1 | 91.8 | 92.9 | 95.2 | 94.5 |
| AUG | 70.1 | 73.2 | 67.3 | 79.0 | 82.6 | 73.6 | 85.1 | 80.7 | 73.4 | 74.1 | 83.2 | 81.9 | 74.6 | 84.2 | 81.8 | 78.7 | 80.3 | 78.0 | 80.4 | 75.1 |
| SEP | 59.1 | 60.7 | 61.2 | 60.9 | 61.9 | 60.1 | 60.6 | 61.5 | 60.4 | 60.9 | 58.1 | 60.4 | 61.5 | 58.0 | 57.9 | 60.4 | 62.5 | 60.2 | 62.3 | 58.4 |
| OKT | 34.0 | 34.9 | 34.6 | 33.8 | 36.2 | 35.9 | 34.9 | 34.6 | 35.7 | 36.9 | 35.3 | 36.0 | 36.4 | 34.1 | 34.1 | 35.7 | 36.9 | 36.7 | 37.8 | 37.5 |
| NOV | 10.8 | 10.8 | 10.9 | 11.4 | 11.6 | 11.5 | 12.2 | 11.3 | 11.9 | 12.3 | 12.8 | 13.2 | 12.3 | 13.9 | 13.9 | 13.6 | 13.5 | 12.5 | 12.6 | 12.5 |
| DEC | 6.4 | 6.0 | 6.1 | 7.7 | 7.0 | 6.7 | 7.4 | 7.8 | 6.7 | 6.3 | 7.6 | 7.5 | 6.8 | 7.6 | 7.2 | 7.1 | 6.8 | 6.7 | 6.6 | 6.6 |
| JAAR | 567.7 | 577.5 | 574.4 | 592.1 | 599.4 | 583.0 | 614.2 | 596.8 | 580.0 | 590.7 | 605.6 | 611.3 | 597.9 | 616.3 | 601.2 | 598.5 | 610.8 | 607.3 | 618.5 | 600.0 |

REFERENTIE
GEWASVERDAMPING (MM)DOORLOPEND POTENTIEEL
NEERSLAGOVERSCHOT (MM)

AANTAL SNEEUWDEKDAGEN

| NR | 235 | 280 | 260 | 310 | 380 | NR | 235 | 280 | 260 | 310 | 380 | NR | 025 | 161 | 550 | 733 | 973 |
|------|------------|-------|------------|----------------|-------|------|------------|-------|------------|----------------|------|------|------------|-------|------------|-------------|------|
| MND | DE KOOY | EELDE | DE BILT | VLIS SINGEN | BEEK | MND | DE KOOY | EELDE | DE BILT | VLIS SINGEN | BEEK | MND | DE KOOY | EELDE | DE BILT | RIT THEM | BEEK |
| JAN | 11.3 | 8.9 | 10.7 | 13.2 | 11.2 | JAN | 1 | | | | | JAN | 1 | 3 | 2 | 3 | 6 |
| FEB | 14.7 | 13.0 | 15.1 | 17.6 | 14.2 | FEB | 2 | | | | | FEB | 2 | 5 | 2 | . | 4 |
| MRT | 34.4 | 31.7 | 32.3 | 35.0 | 35.8 | MRT | 6 | | | | | MRT | 6 | 9 | 7 | 5 | 7 |
| APR | 62.7 | 64.7 | 62.0 | 59.9 | 57.2 | APR | 10 | -10 | 1 | -8 | -14 | APR | | | | | |
| MEI | 90.3 | 80.6 | 85.9 | 90.9 | 90.3 | MEI | -41 | -35 | -31 | -30 | -65 | MEI | | | | | |
| JUN | 108.2 | 101.2 | 106.5 | 116.6 | 115.2 | JUN | -113 | -86 | -85 | -103 | -136 | JUN | | | | | |
| JUL | 84.2 | 83.2 | 84.7 | 97.1 | 96.0 | JUL | -90 | -66 | -12 | -20 | -162 | JUL | | | | | |
| AUG | 80.5 | 70.5 | 79.8 | 88.5 | 79.5 | AUG | -67 | -17 | 4 | 24 | -166 | AUG | | | | | |
| SEP | 60.7 | 60.5 | 58.6 | 63.3 | 63.5 | SEP | -39 | -24 | 9 | 4 | -202 | SEP | | | | | |
| OKT | 34.9 | 35.5 | 35.9 | 35.3 | 38.8 | OKT | -7 | -12 | 29 | 11 | -174 | OKT | | | | | |
| NOV | 11.4 | 11.4 | 12.2 | 15.4 | 12.3 | NOV | | | | | | NOV | . | 2 | 2 | . | 6 |
| DEC | 8.2 | 6.6 | 7.5 | 9.4 | 5.7 | DEC | | | | | | DEC | 5 | 6 | 4 | 3 | 8 |
| JAAR | 601.5 | 567.8 | 591.2 | 642.2 | 619.7 | JAAR | | | | | | JAAR | | | | | |

SNEEUWDEK DAG IS EEN DAG WAAROP
EEN SNEEUWDEK IS GECONSTATEERD OM 08.00 UUR

NEERSLAGGEMIDDELDEN PER DISTRICT (MM)

| | D1 | D2 | D3 | D4 | D5 | D6 | D7 | D8 |
|------|-------|-------|-------|-------|-------|-------|-------|-------|
| JAAR | 830.3 | 819.3 | 787.6 | 910.3 | 847.3 | 779.5 | 900.8 | 876.8 |
| NORM | 791.9 | 806.6 | 799.8 | 816.1 | 793.1 | 785.4 | 830.2 | 834.0 |
| | D9 | D10 | D11 | D12 | D13 | D14 | D15 | LAND |
| JAAR | 834.4 | 875.8 | 859.2 | 820.5 | 782.2 | 720.8 | 720.8 | 834.2 |
| NORM | 769.4 | 779.2 | 778.2 | 801.5 | 763.0 | 727.4 | 791.4 | 796.8 |

HOOGSTE JAARSOM 1029.2 MM TE
593 LAREN

LAAGSTE JAARSOM 600.2 MM TE
979 ECHT

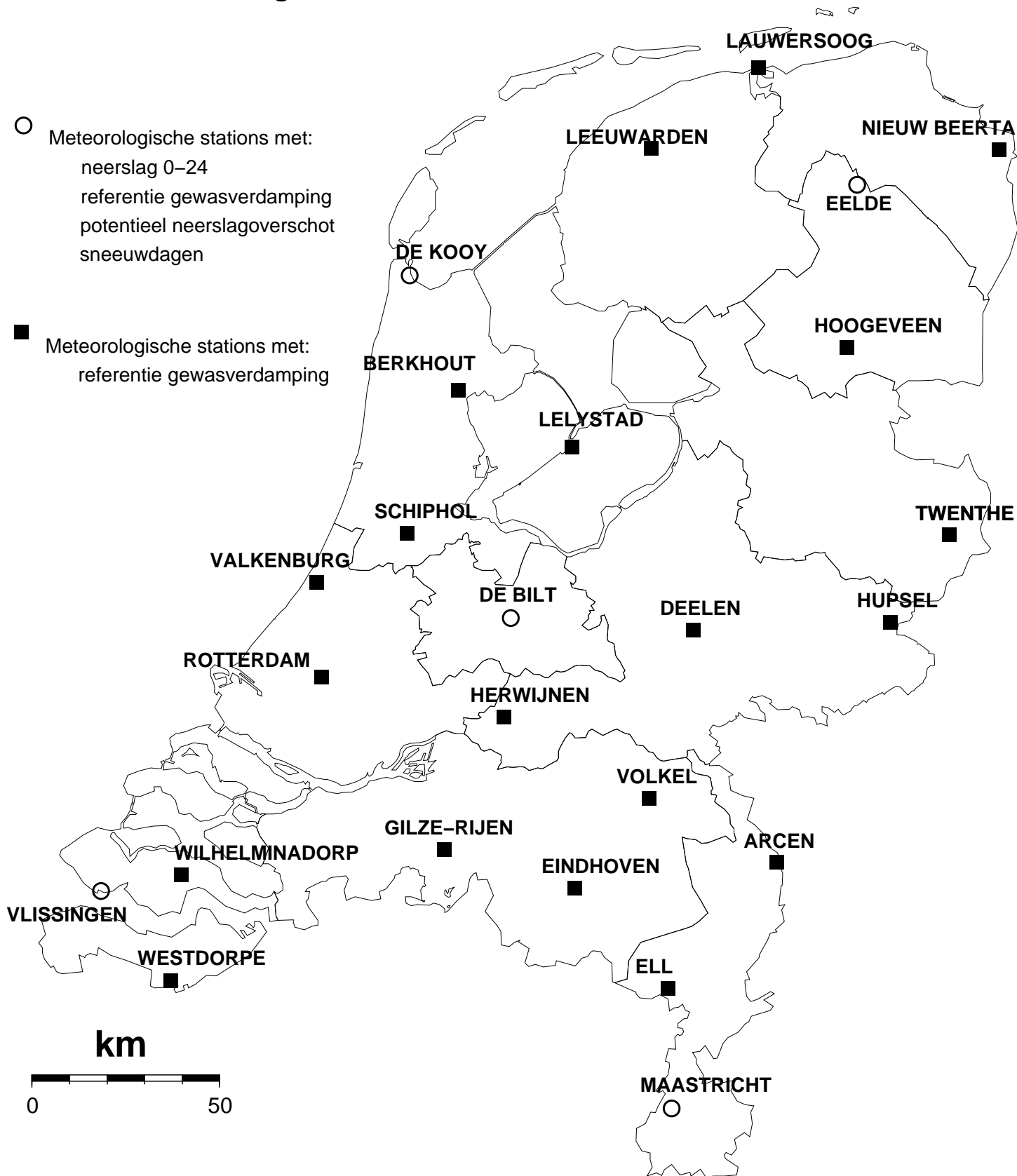
HOOGSTE MAANDSOM 226.0 MM IN
TE 593 LAREN

LAAGSTE MAANDSOM 15.4 MM IN
JUNI TE 761 PHILIPPINE

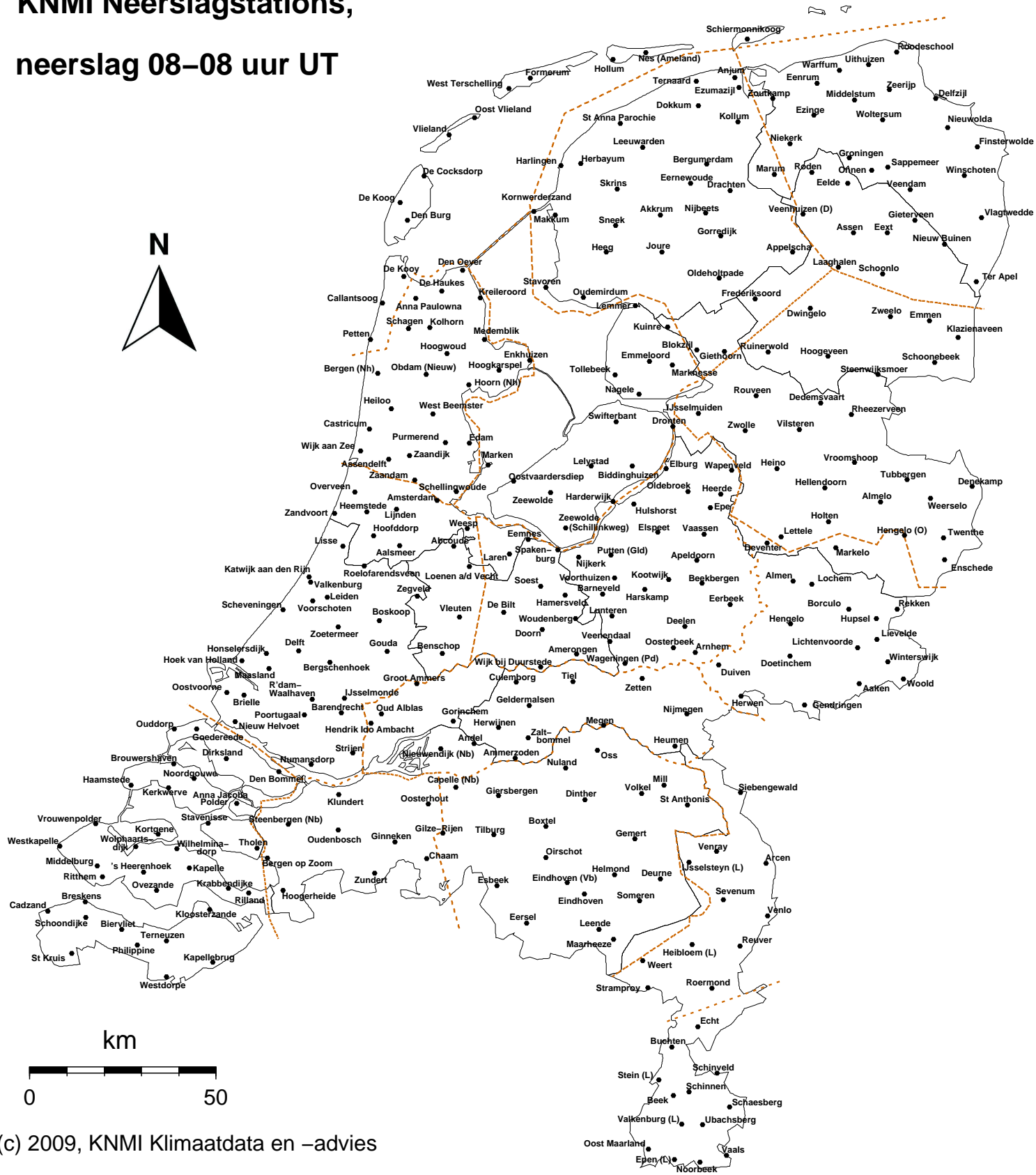
HOOGSTE DAGSOM 113.0 MM OP
30/06 TE 835 ANDEL

NORMALEN: TIJDVAK 1971-2000

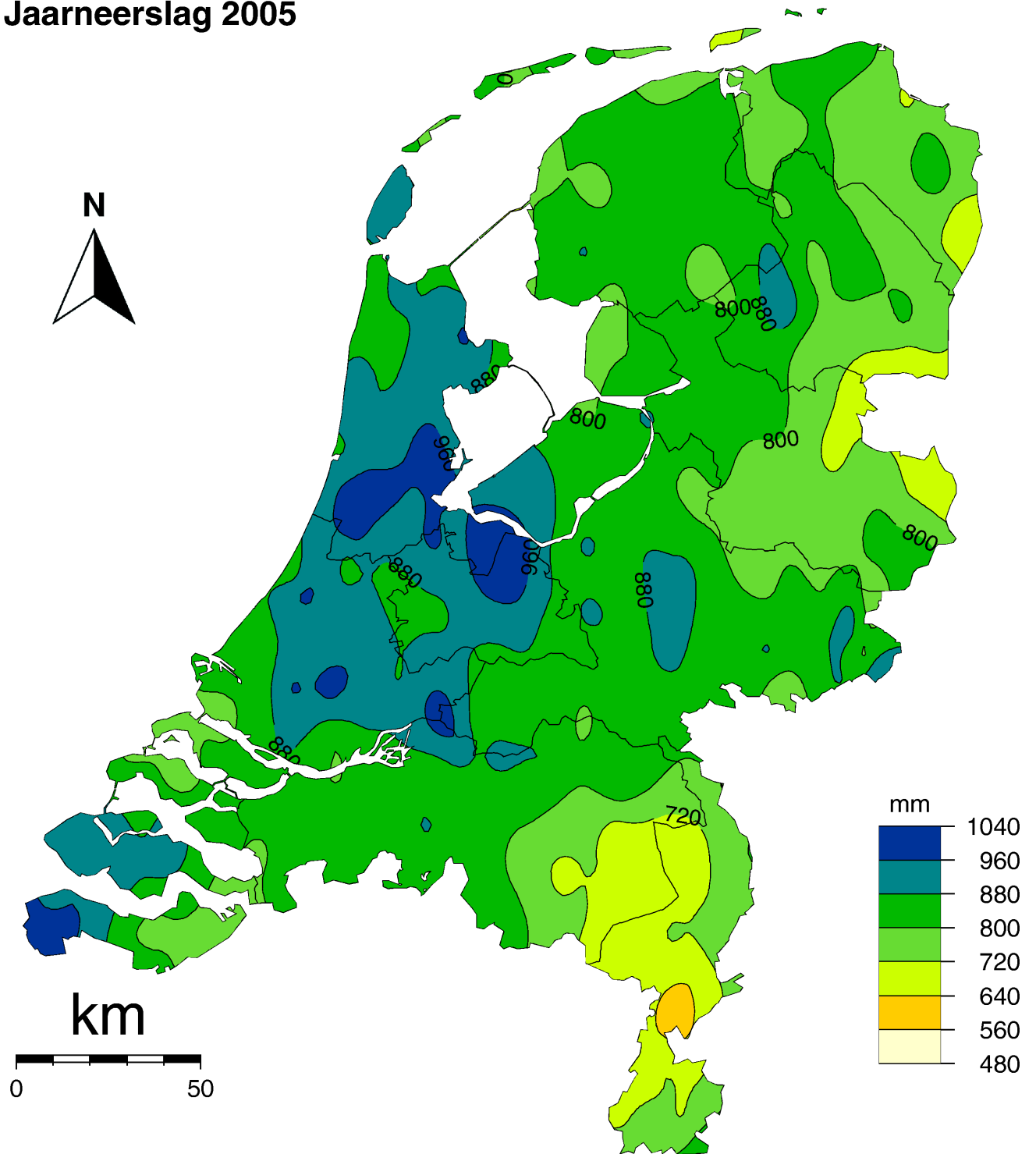
Kaart met meteorologische stations



KNMI Neerslagstations, neerslag 08–08 uur UT



Jaarneerslag 2005



(c) 2009, KNMI Klimaatdata en -advies



Dit rapport is een uitgave van:

Koninklijk Nederlands Meteorologisch Instituut
Klimaatdata en -advies
Postbus 201 | 3730 AE De Bilt
www.knmi.nl | klimaatdesk@knmi.nl