



Koninklijk Nederlands
Meteorologisch Instituut
Ministerie van Verkeer en Waterstaat

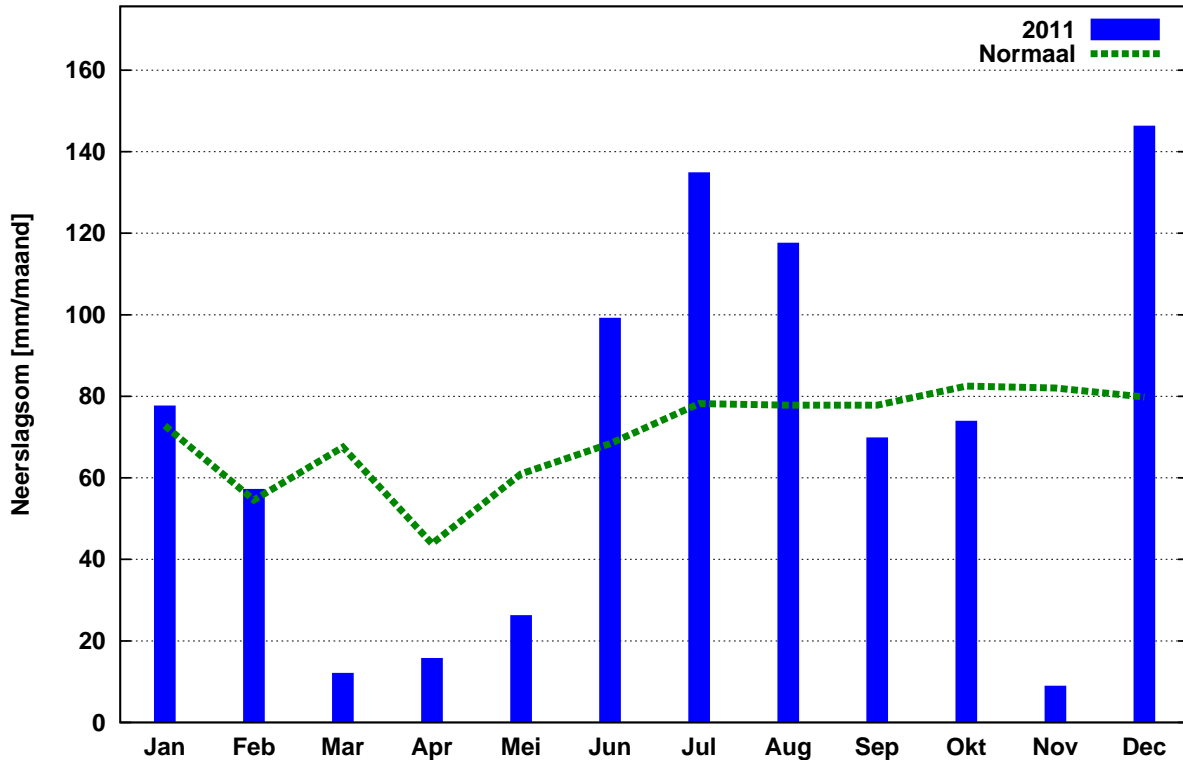
Jaaroverzicht neerslag en verdamping in Nederland

2011



Landelijk gemiddelde maandelijkse neerslagsom in 2011 (gebaseerd op 326 stations)

Jaarsom: 840.5 mm Normaal: 846.4 mm



In het Jaaroverzicht neerslag en verdamping in Nederland (JONV) zijn maandelijkse en jaarlijkse gegevens van neerslag, verdamping, potentieel neerslagoverschot en sneeuwdagen opgenomen. De metingen worden verricht op ca. 325 KNMI-neerslagstations en 25 KNMI meteorologische stations, alwaar uit metingen van temperatuur en straling de referentie-gewasverdamping wordt berekend. Het JONV is ruim 75 jaar uitgegeven als KNMI-periodiek en wordt sinds 2009 verspreid via internet (<http://www.knmi.nl/klimatologie/monv>).

KNMI
Klimaatdata en –advies
Postbus 201
3730 AE De Bilt
e-mail: Klimaatdesk@knmi.nl

DISTRICT 3

NR	147	148	150	151	152	153	154	155	156	158	159	160	161	162	163	164	172	323
MND	VEEN DAM	SAPPE MEER	UIT HUI ZEN	ROODE SCHOOL	GIETER VEEN	WIN SCHO TEN	EENRUM	EEXT	VLAGT WEDDE	ONNEN	NIEUW BUIJEN	VEEN HUI ZEN	EELDE	NIE KERK	RODEN	ZEE RIJP	NIEUW OLDA	LAAG HA LEN
JAN	46.3	50.4	41.8	44.7	62.8	63.8	47.3	68.9	58.3	45.4	63.1	50.8	50.7	43.5	50.6	35.9	44.1	64.4
FEB	34.5	40.1	41.7	49.1	41.6	42.7	42.1	47.5	32.7	43.5	41.3	37.6	38.6	34.9	37.5	35.3	44.1	44.6
MRT	8.9	8.5	8.3	15.1	12.7	13.5	9.6	13.5	15.3	10.7	17.4	13.5	12.8	7.7	13.5	9.6	9.9	9.8
APR	6.6	6.3	9.2	10.6	6.8	11.9	9.7	7.2	8.2	5.9	9.3	7.5	6.8	6.3	7.5	8.7	7.0	6.8
MEI	39.8	59.1	68.8	60.4	48.6	46.1	46.6	58.6	32.4	56.3	35.0	45.6	48.6	53.3	55.4	36.5	52.0	50.2
JUN	86.9	82.5	81.6	83.7	90.4	152.5	79.1	94.9	101.4	81.4	140.3	69.5	71.6	65.3	72.4	77.0	93.7	65.7
JUL	115.5	112.4	118.5	138.6	123.5	113.0	116.7	137.9	87.7	117.1	111.4	133.0	120.6	116.2	148.2	113.8	96.4	139.5
AUG	92.4	101.9	157.1	192.6	102.2	117.9	130.2	147.7	103.6	95.2	105.9	99.3	112.8	118.5	114.7	108.8	85.8	95.8
SEP	74.8	69.9	79.3	93.9	73.7	92.3	80.4	85.1	75.4	66.4	79.8	73.4	74.8	69.6	67.2	70.4	60.0	79.9
OKT	59.4	89.8	95.5	101.0	74.6	77.6	99.5	74.2	71.5	89.2	66.6	79.8	77.9	77.4	91.8	90.4	98.9	72.2
NOV	3.9	4.0	8.8	8.9	5.1	4.8	12.2	8.8	3.3	4.8	4.7	7.0	5.4	4.8	7.8	5.1	5.1	7.0
DEC	157.5	192.6	160.5	180.0	165.2	186.4	157.3	164.1	155.5	172.7	153.7	159.4	174.3	164.1	178.4	128.6	165.8	148.5
JAAR	726.5	817.5	871.1	978.6	807.2	922.5	830.7	908.4	745.3	788.6	828.5	776.4	794.9	761.6	845.0	720.1	762.8	784.4
NORM	799.6	862.0	896.6	828.4	819.1	829.4	878.6	884.6	778.6	823.9	824.9	879.1	838.0	876.4	925.2	852.8		

DISTRICT 3

DISTRICT 4

NR	337	217	221	222	223	224	226	227	228	230	233	234	235	236	238	239	240
MND	SCHOON LOO	HEILOO	ENK HUI ZEN	HOORN	SCHEL LING WOUDE	EDAM	WIJK A/ZEE	ANNA PAU LOWNA	SCHA GEN	ZAAN DIJK	ZAAN DAM H*BRG	BER GEN	CAS TRICUM	MEDEM BLIK	DE HAUKES	DEN OEVER	KREI LER OORD
JAN	72.3	71.1	55.9	64.1	84.0	71.4	70.9	51.8	56.5	70.9	77.6	73.4	67.9	58.4	44.3	41.7	49.3
FEB	49.0	71.1	45.7	47.9	68.5	60.1	61.1	52.0	52.4	64.5	67.7	71.7	81.3	49.1	43.1	37.4	39.9
MRT	18.1	4.1	6.8	6.0	6.0	4.8	3.8	5.6	3.8	6.2	7.1	4.4	3.8	8.7	5.2	3.2	7.0
APR	8.1	11.2	11.5	11.9	17.9	14.8	12.9	11.8	12.6	16.5	16.5	15.7	13.1	10.4	12.8	11.2	12.6
MEI	49.7	19.3	21.0	28.0	23.7	23.4	11.9	19.1	17.2	23.1	21.0	16.9	14.3	25.4	19.6	23.6	21.1
JUN	96.9	84.3	111.5	108.3	114.3	108.1	85.4	82.3	79.1	110.6	121.5	89.2	80.2	96.6	76.6	82.2	89.5
JUL	142.9	169.4	127.7	140.0	143.6	142.0	158.4	208.3	190.1	148.3	127.4	212.2	186.0	179.1	188.3	192.3	168.6
AUG	152.5	100.1	79.6	98.2	124.8	100.2	79.0	130.3	102.4	98.8	129.2	114.4	87.8	75.4	153.1	169.8	108.0
SEP	78.8	119.9	82.5	91.2	80.4	78.0	76.2	83.6	78.5	75.0	92.9	104.0	120.6	68.6	87.1	77.6	72.7
OKT	81.8	86.1	87.3	97.9	86.6	88.6	73.7	86.5	85.0	92.0	94.4	94.3	94.5	98.9	78.9	80.5	94.3
NOV	5.9	13.6	9.0	8.9	10.0	10.1	6.7	10.2	7.2	9.2	7.1	9.1	8.4	9.3	8.9	7.5	6.3
DEC	165.8	132.8	123.6	133.2	149.9	119.1	134.2	130.5	153.5	134.4	138.4	148.8	142.4	140.1	124.1	124.6	127.6
JAAR	921.8	883.0	762.1	835.6	909.7	820.6	774.2	872.0	838.3	849.5	900.8	954.1	900.3	820.0	842.0	851.6	796.9
NORM	892.4	874.4	842.3	843.6	953.2	892.6	850.4	853.2	858.0	889.2	932.0	878.1	903.3	857.8	833.3	794.2	794.5

DISTRICT 4

DISTRICT 5

NR	242	249	251	252	255	257	263	256	317	344	348	352	356	359	364	365	366
MND	PURMER END	HOOG KARS PEL	WEST BEEM STER	KOL HORN	OBDAM	HOOG WOUDE	ASSEN DELFT	MARK EN	MARK NESSE	TOLLE BEEK	EMMEL OORD	NA GELE	KUINRE	LEMMER BUMA	DRON TEN	SWIF TER BANT	BID DING HUIZEN
JAN	80.4	63.1	71.8	55.8	62.1	55.1	72.1	79.4	64.8	55.6	63.8	68.6	65.7	55.1	81.8	67.6	74.8
FEB	67.4	54.4	65.6	49.7	63.1	56.4	81.2	62.5	44.6	44.8	47.8	53.9	49.6	49.8	54.2	52.6	62.2
MRT	7.9	7.3	6.1	4.8	5.7	5.5	4.3	6.8	5.9	3.8	4.7	4.1	8.7	6.0	7.7	4.2	9.4
APR	15.1	10.2	13.6	12.3	11.3	10.0	20.8	12.6	9.2	8.3	9.7	9.9	10.0	10.0	12.2	11.2	13.1
MEI	29.9	21.9	22.6	17.3	19.7	22.5	21.6	22.2	53.9	32.8	32.8	29.5	38.9	26.0	41.8	36.1	28.9
JUN	106.1	104.1	104.6	99.1	107.4	88.7	108.1	98.9	114.8	128.6	123.0	116.7	123.8	129.6	104.7	94.6	102.2
JUL	156.5	135.5	166.4	207.8	157.9	155.1	173.9	122.9	131.1	100.2	134.6	139.2	135.2	110.6	149.5	144.2	170.1
AUG	99.6	97.8	109.6	115.6	129.3	104.5	108.7	113.9	125.8	94.4	106.8	117.6	108.7	98.0	92.6	126.2	92.6
SEP	93.0	78.4	70.2	87.2	75.9	82.0	87.1	82.8	84.9	67.3	80.1	82.4	64.9	70.6	63.4	74.6	64.5
OKT	98.2	98.2	100.5	92.5	105.3	99.0	103.4	80.2	87.6	86.3	90.7	80.3	90.8	88.3	93.0	92.9	92.0
NOV	12.4	8.3	14.6	7.5	10.7	10.6	8.7	8.6	10.0	6.4	7.6	13.6	12.5	8.0	12.8	9.7	13.5
DEC	143.0	132.6	140.7	131.9	141.0	133.4	151.9	141.4	101.7	89.2	101.0	103.0	126.3	138.0	116.7	99.7	130.8
JAAR	909.5	811.8	886.3	881.5	889.4	822.8	941.8	832.2	834.3	717.7	802.6	818.8	835.1	790.0	830.4	813.6	854.1
NORM	935.9	836.8	878.2	846.4	891.0		893.3	840.8		800.5	859.1	854.6	893.9	816.5	874.7	833.6	850.2

2011
NEERSLAG 8-8 UUR (MM)

DISTRICT 14			DISTRICT 15												
NR	970	977	962	963	965	966	968	969	971	973	974	979	980	981	982
MND	STRAMP ROY	REUVER	UBACHS BERG	VAL KEN BURG	SCHAES BERG	SCHIN NEN	VAALS	STEIN	NOOR BEEK	BEEK	BUCH TEN	ECHT	EPEN	OOST- MAAR LAND	SCHIN VELD
JAN	71.9	95.0	104.8	115.8	99.0	96.8	138.0	98.8	106.4	93.2	78.6	72.1	105.0	94.6	75.2
FEB	63.4	71.0	57.4	57.7	63.0	65.5	61.0	64.3	48.1	62.5	57.6	56.0	49.6	46.2	55.7
MRT	19.4	18.7	18.9	14.6	20.5	15.5	11.0	16.8	15.8	15.7	15.5	12.5	12.5	12.6	11.5
APR	19.1	20.0	29.5	33.0	24.6	23.7	36.6	23.5	40.8	29.3	20.1	13.0	33.1	34.4	20.1
MEI	14.7	14.7	16.4	11.0	16.5	12.6	20.2	13.1	21.3	15.4	12.8	11.5	20.0	13.1	12.0
JUN	82.6	126.7	88.1	76.0	83.6	98.3	104.8	84.1	99.2	95.8	97.6	117.1	92.6	75.5	81.3
JUL	85.5	100.1	60.4	75.2	62.8	52.3	53.4	49.5	58.0	63.9	64.8	61.3	64.8	51.5	51.3
AUG	95.4	110.3	147.0	159.6	118.2	130.5	132.1	118.7	160.5	110.7	111.7	99.7	133.8	137.1	114.6
SEP	39.8	28.8	36.9	39.3	36.0	44.7	42.5	47.5	36.2	39.7	37.7	23.6	42.0	37.0	34.3
OKT	50.6	57.3	47.3	40.0	46.0	44.6	48.4	37.1	49.9	37.1	50.0	41.7	51.0	49.5	45.0
NOV	7.9	7.9	2.2	4.6	3.8	4.7	3.7	4.9	7.2	3.5	5.6	5.8	3.1	1.8	2.7
DEC	136.0	133.3	125.8	131.1	126.4	126.6	157.5	120.2	135.7	114.5	121.6	113.4	152.3	122.2	112.6
JAAR	686.3	783.8	734.7	757.9	700.4	715.8	809.2	678.5	779.1	681.3	673.6	627.7	759.8	675.5	616.3
NORM	751.0	781.0	837.4	891.8	821.4	865.5	950.6	820.5	848.5	794.3	770.3	723.2	909.5	768.3	

NR	270	277	286	249	269	279	210	240	275	290	344	356	283	323	319	350	370	375	377	391
MND	LAU										WILHELM									
	LEEU WARDEN	WERS OOG	NIEUW BEERTA	BERK HOUT	LELY STAD	HOOGVEALKEN VEEN	SCHIP BURG	SCHIP HOL	DEE LEN	DEE TWENTE	R'DAM	HER WIJNEN	HUP SEL	MINA DORP	WEST DORPE	GILZE RIJEN	EIND HOVENVOLKEL	ELL	ARCEN	
JAN	8.2	7.7	7.4	8.9	8.2	7.8	9.2	8.5	7.9	7.0	7.9	8.9	7.5	9.0	8.7	8.7	8.4	8.3	9.2	8.6
FEB	12.2	11.7	12.9	11.4	12.6	12.7	13.1	12.7	12.8	13.3	12.4	13.5	12.7	13.6	13.6	14.0	14.2	13.9	14.7	14.9
MRT	38.9	37.9	38.4	40.0	39.9	37.7	42.7	42.1	41.1	40.2	39.9	41.9	41.6	45.8	46.0	41.9	43.0	42.2	44.1	43.2
APR	80.4	79.7	79.6	82.0	78.9	79.8	85.5	82.4	76.6	75.9	81.3	82.6	76.7	85.4	82.2	81.4	80.3	80.0	79.8	79.7
MEI	92.3	92.1	93.6	94.1	94.3	93.3	104.8	96.5	94.8	96.6	98.8	98.8	98.7	105.3	101.8	99.7	99.3	100.5	103.0	102.0
JUN	94.7	96.5	93.3	96.9	93.8	91.4	100.0	93.7	90.5	93.1	93.3	95.0	96.2	95.8	92.8	91.4	92.1	91.6	93.9	89.9
JUL	72.8	73.4	76.7	86.8	82.1	78.1	91.5	85.3	78.0	79.0	83.3	84.5	81.8	84.1	79.1	80.6	82.2	82.2	82.0	81.0
AUG	72.6	71.0	70.4	73.5	69.9	70.3	75.1	70.3	71.4	72.3	74.1	74.4	75.3	73.8	74.8	74.6	76.3	75.9	77.0	78.1
SEP	51.5	51.4	53.9	52.3	52.9	52.9	54.7	52.7	53.6	54.3	54.6	57.6	55.2	56.6	57.7	56.8	57.0	55.7	58.2	55.9
OKT	29.8	29.3	29.5	31.4	30.0	30.9	32.4	30.6	31.7	31.0	33.1	32.4	32.1	35.6	36.1	33.6	33.9	32.9	34.8	33.3
NOV	10.9	10.7	10.5	12.9	13.3	11.7	15.0	14.3	14.2	12.7	14.5	14.1	14.3	15.2	15.0	15.9	16.0	15.1	17.1	15.8
DEC	6.3	5.9	6.2	7.6	6.6	6.2	7.8	7.6	6.7	6.1	7.5	7.7	6.5	8.8	7.9	7.2	6.9	7.5	7.5	6.7
JAAR	570.6	567.3	572.4	597.8	582.5	572.8	631.8	596.7	579.3	581.5	600.7	611.4	598.6	629.0	615.7	605.8	609.6	605.8	621.3	609.1

REFERENTIE
GEWASVERDAMPING (MM)DOORLOPEND POTENTIEEL
NEERSLAGOVERSCHOT (MM)

AANTAL SNEEUWDEKDAGEN

NR	235	280	260	310	380	NR	235	280	260	310	380	NR	025	161	550	733	973
MND	DE KOOY	EELDE	DE BILT	VLIS SINGEN	BEEK	MND	DE KOOY	EELDE	DE BILT	VLIS SINGEN	BEEK	MND	DE KOOY	EELDE	DE BILT	RIT THEM	BEEK
JAN	8.7	7.9	8.8	9.2	8.4	JAN						JAN	.	.	1	.	7
FEB	12.0	12.6	12.7	14.1	14.7	FEB						FEB	1
MRT	38.3	38.4	41.0	46.8	43.6	MRT						MRT
APR	82.2	78.9	78.6	85.2	77.8	APR	-75	-74	-70	-73	-65	APR					
MEI	101.0	89.1	93.7	105.6	104.5	MEI	-160	-111	-134	-163	-150	MEI					
JUN	105.5	90.1	92.2	96.7	91.1	JUN	-176	-132	-111	-194	-140	JUN					
JUL	90.5	74.7	81.7	91.2	75.5	JUL	-90	-90	-14	-191	-170	JUL					
AUG	76.4	70.1	70.2	78.0	76.2	AUG	-53	-62	12	-177	-136	AUG					
SEP	53.0	51.2	53.8	59.4	57.5	SEP	-8	-43	47	-190	-154	SEP					
OKT	31.3	28.6	31.6	38.2	33.1	OKT	32	10	83	-174	-154	OKT					
NOV	12.0	10.7	13.9	16.1	16.8	NOV						NOV
DEC	6.5	6.2	7.2	8.7	6.3	DEC						DEC	1
JAAR	617.4	558.5	585.4	649.2	605.5	JAAR						JAAR					

SNEEUWDEK DAG IS EEN DAG WAAROP
EEN SNEEUWDEK IS GECONSTATEERD OM 08.00 UUR

NEERSLAGGEMIDDELDEN PER DISTRICT (MM)

	D1	D2	D3	D4	D5	D6	D7	D8
JAAR	806.6	814.3	818.8	858.9	834.2	830.0	917.7	957.3
NORM	834.8	853.7	848.3	869.6	848.8	836.5	888.9	889.7
	D9	D10	D11	D12	D13	D14	D15	LAND
JAAR	796.6	858.0	822.8	859.0	786.6	737.5	708.4	840.5
NORM	829.0	825.7	824.3	848.0	804.6	769.6	833.4	847.2

HOOGSTE JAARSOM 1068.5 MM TE
567 KOOTWIJK (RADIO)

LAAGSTE JAARSOM 616.3 MM TE
982 SCHINVELD

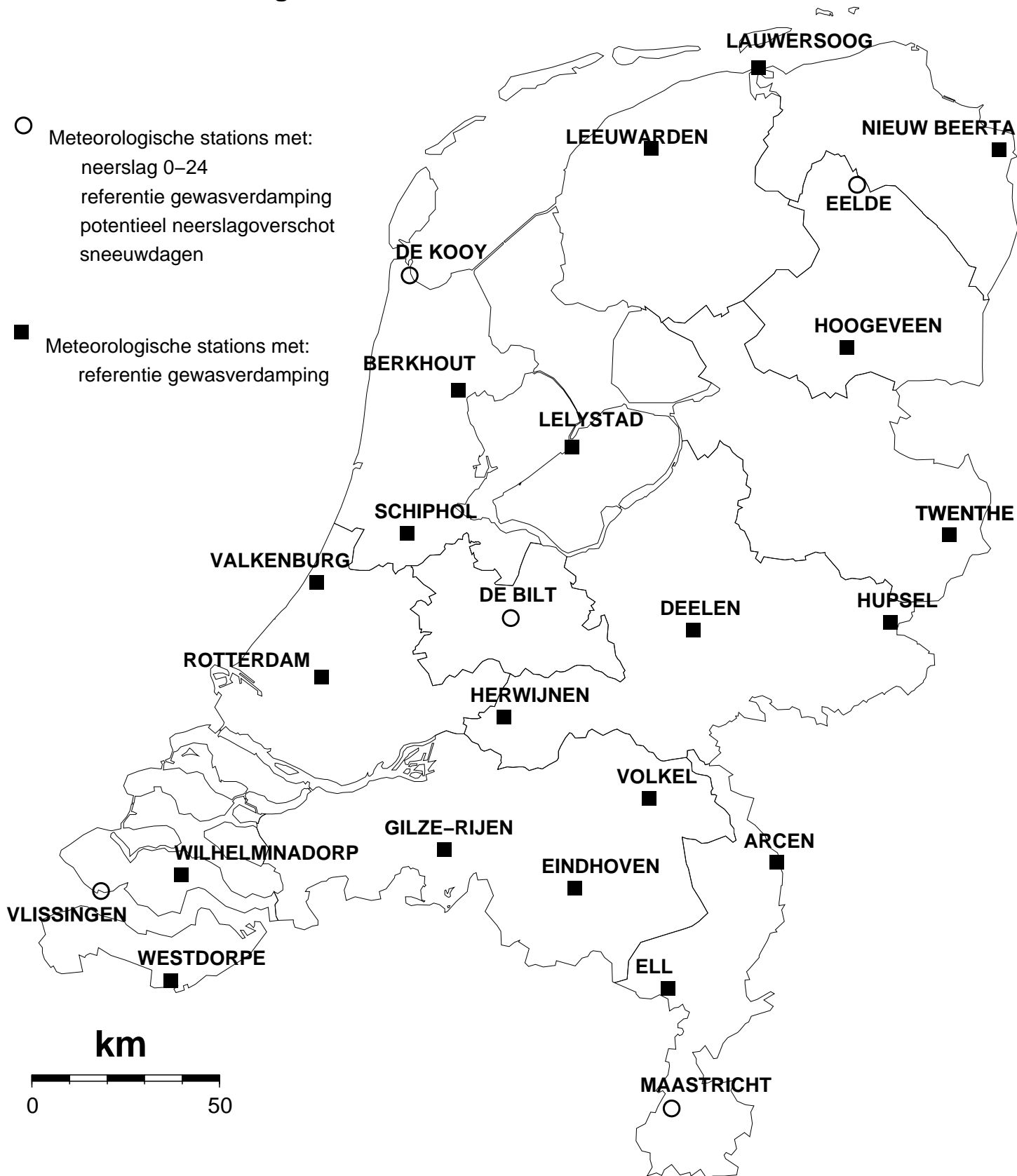
HOOGSTE MAANDSOM 264.2 MM IN
TE 570 ELSPEET

LAAGSTE MAANDSOM 0.9 MM IN
TE 24 VLIELAND

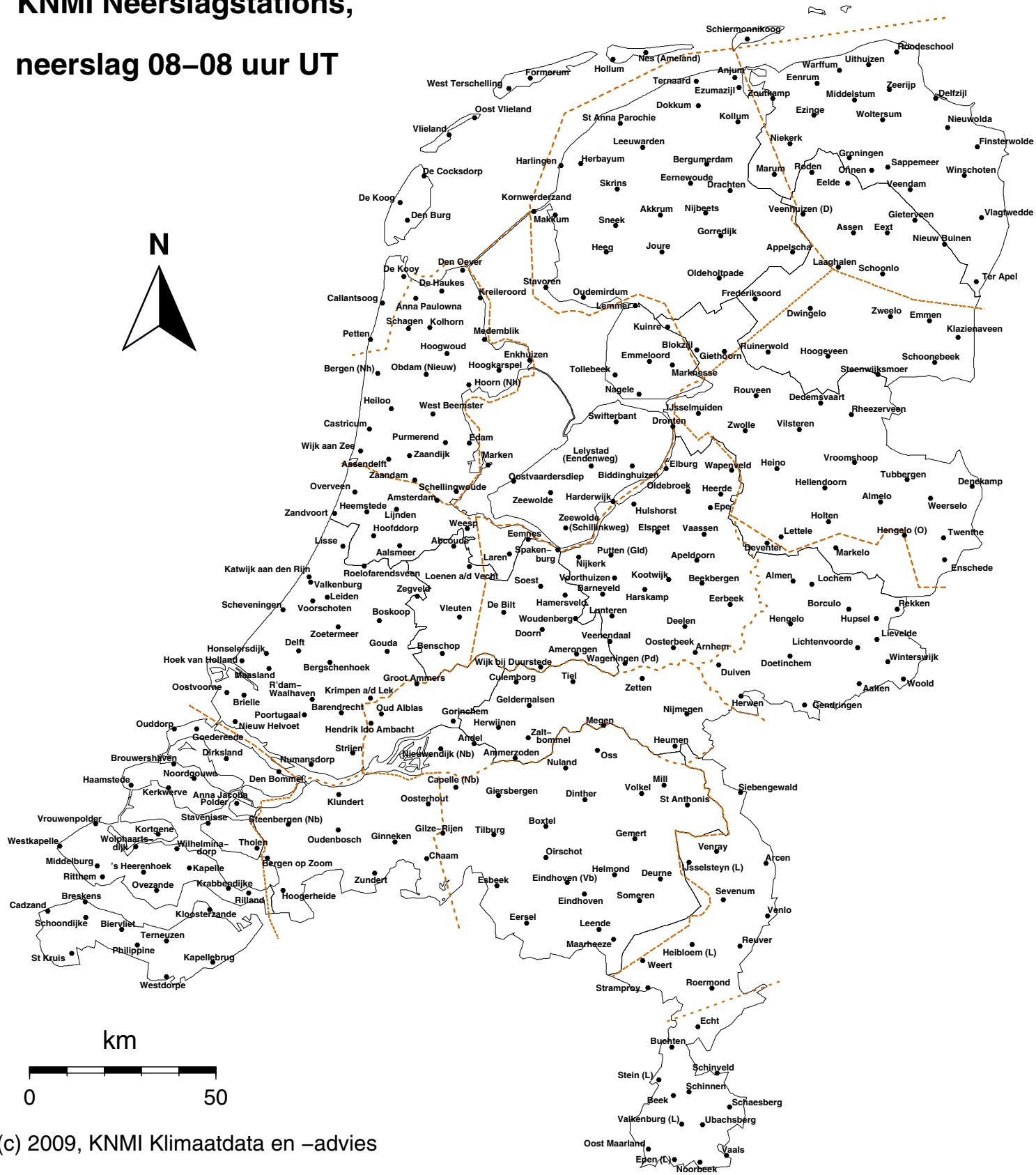
HOOGSTE DAGSOM 76.8 MM OP
15/07 TE 474 VALKENBURG

NORMALEN: TIJDVAK 1981-2010

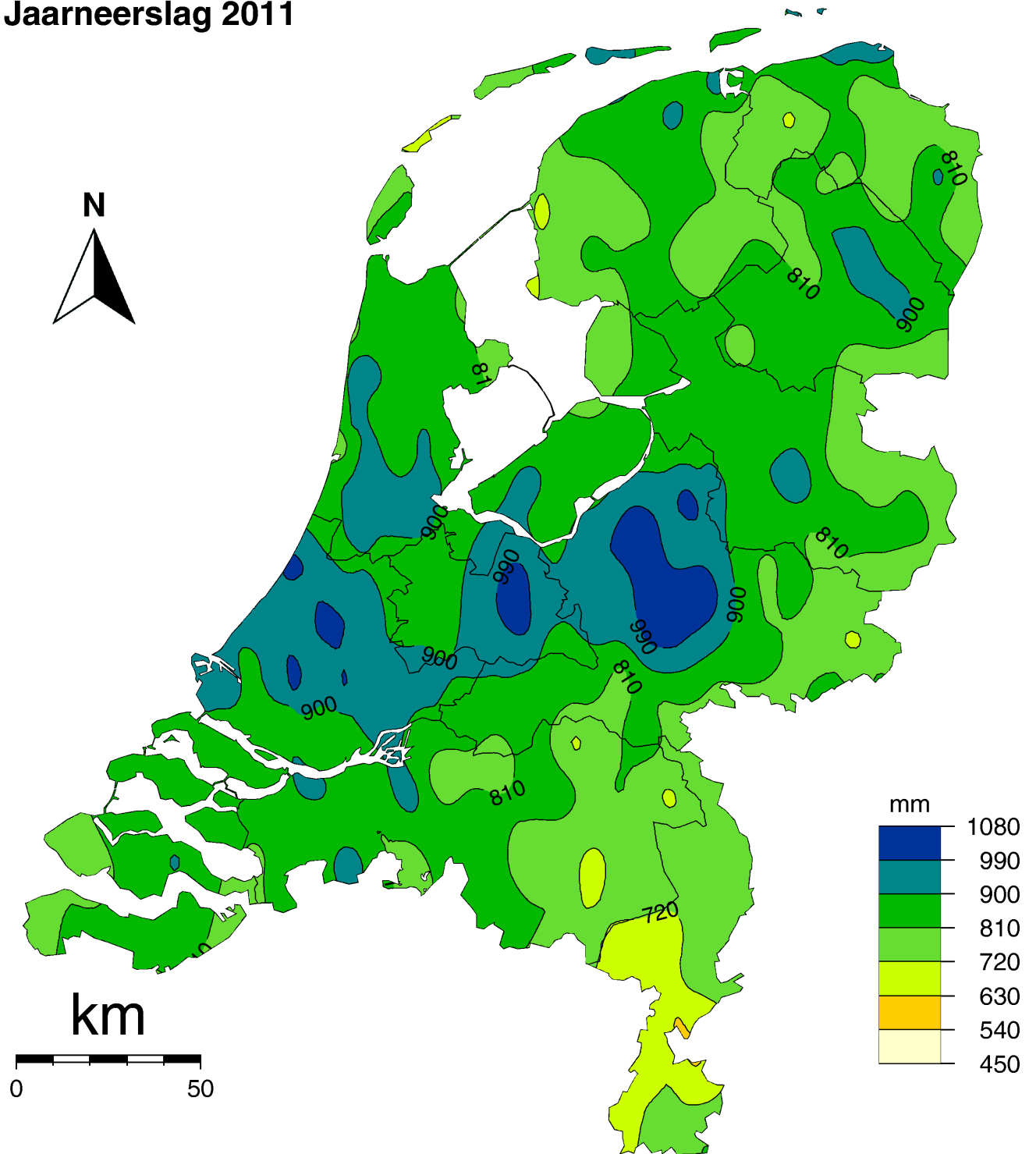
Kaart met meteorologische stations



KNMI Neerslagstations, neerslag 08–08 uur UT



Jaarneerslag 2011



(c) 2012, KNMI Klimaatdata en -advies



Dit rapport is een uitgave van:

Koninklijk Nederlands Meteorologisch Instituut
Klimaatdata en -advies
Postbus 201 | 3730 AE De Bilt
www.knmi.nl | klimaatdesk@knmi.nl