



Koninklijk Nederlands  
Meteorologisch Instituut  
*Ministerie van Infrastructuur en Milieu*

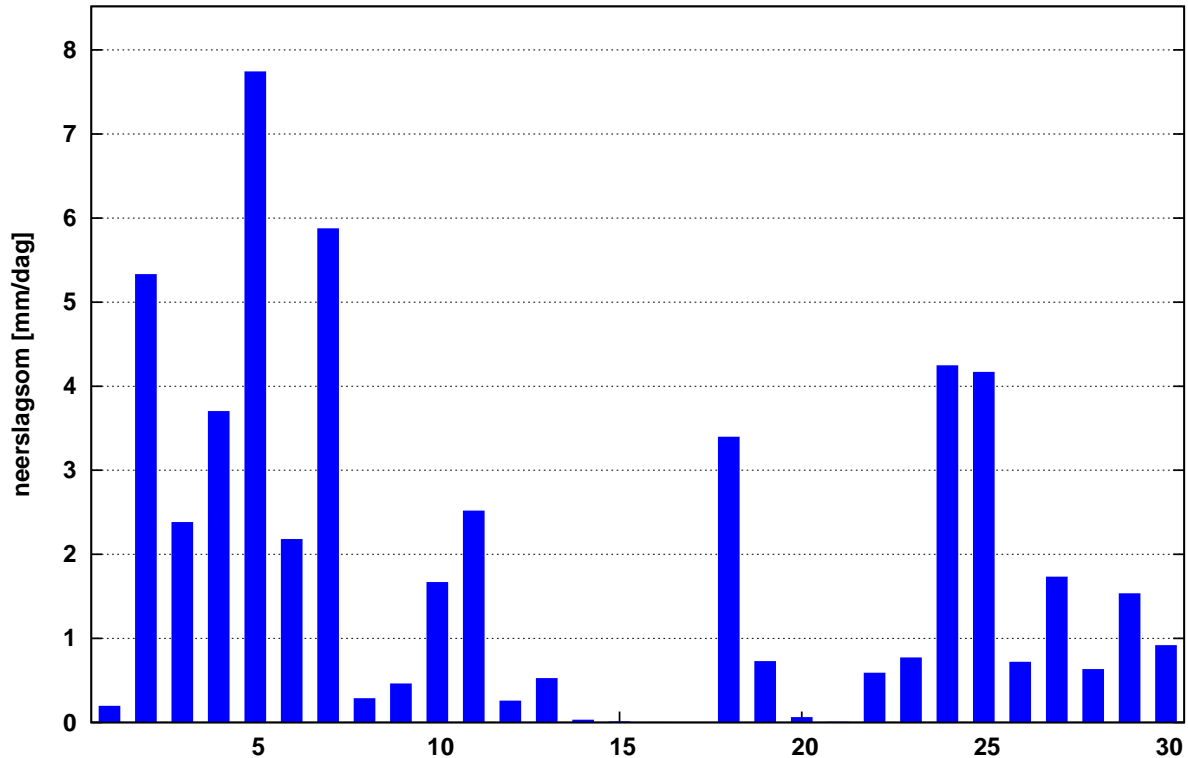
# Maandoverzicht neerslag en verdamping in Nederland

november 2012



Landelijk gemiddelde dagelijkse neerslagsom november 2012 (gebaseerd op 324 stations)

Maandsom: 53 mm    Normaal: 82 mm



In het Maandoverzicht neerslag en verdamping in Nederland (MONV) zijn dagelijkse gegevens van neerslag, verdamping, potentieel neerslagoverschot en sneeuwdagen opgenomen. Daarnaast worden decade- en maandwaarden vermeld. De metingen worden verricht op ca. 325 KNMI-neerslagstations en 25 KNMI meteorologische stations, alwaar uit metingen van temperatuur en straling de referentie-gewasverdamping wordt berekend. Het MONV is ruim 75 jaar uitgegeven als KNMI-periodiek en wordt sinds 2009 verspreid via internet (<http://www.knmi.nl/nederland-nu/klimatologie/gegevens/monv>).

**KNMI**  
Postbus 201  
3730 AE De Bilt  
e-mail: [Klimaatdesk@knmi.nl](mailto:Klimaatdesk@knmi.nl)













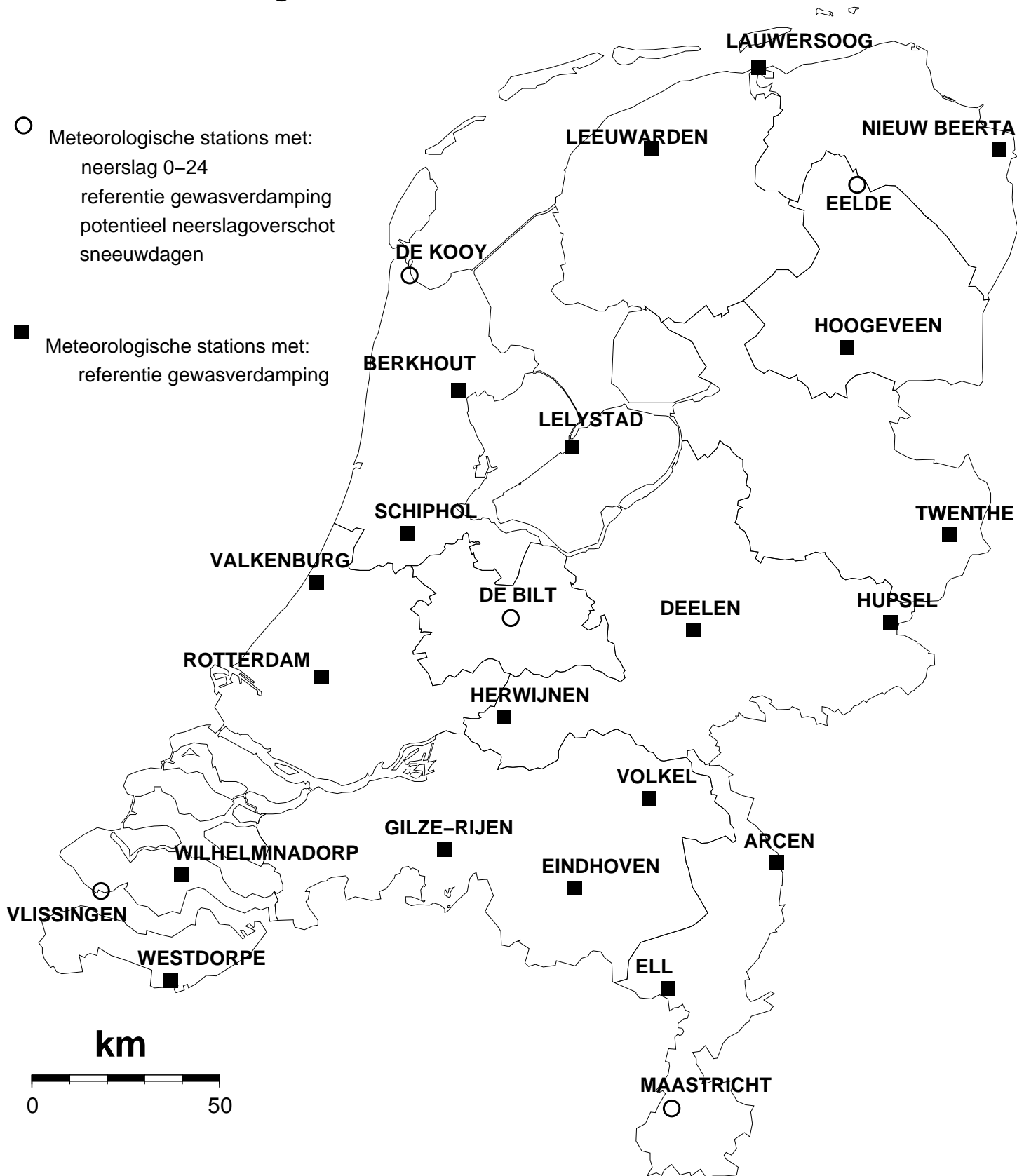




DISTRICT 13													DISTRICT 14								
NR	906	907	908	909	911	912	914	915	918	919	920	926	883	897	913	921	922	923	961	964	
DAG	OIR SCHOT	BOX TEL	DEURNE	MILL	DIN THER	LEENDE	OSS	EERSEL	MAAR HEEZE	EIND HOVEN VB	WAAALRE VOLKEL		SEVE NUM	VENLO	IJSSEL STEYN	SIEBEN GE VENRAY	WALD	ARCEN	ROER MOND	WEERT	
1	.	.	.	0.1	.	.	.	.	.	.	.	.	.	.	.	.	.	.	.	.	.
2	1.2	1.0	6.7	2.8	1.3	8.8	2.9	4.7	5.1	3.3	2.7	2.4	2.7	2.2	6.4	6.6	3.2	2.2	1.5	1.1	
3	3.4	1.6	3.7	3.4	3.8	3.0	2.0	6.2	5.2	4.2	3.1	3.3	3.3	3.0	2.5	2.5	1.6	3.5	2.2	4.2	
4	3.1	3.3	2.9	3.3	3.0	3.3	3.0	3.5	4.8	3.0	2.8	3.5	4.5	3.7	3.0	3.6	4.1	4.1	4.0	3.3	
5	4.4	1.9	5.4	4.7	3.0	6.0	3.1	5.7	5.5	4.6	4.5	6.2	4.6	5.8	4.2	6.0	6.3	5.1	5.3	4.9	
6	0.6	1.0	1.4	1.7	1.3	1.5	0.8	1.3	1.5	2.0	1.3	1.3	1.9	1.1	2.1	1.6	1.2	1.2	2.4	2.2	
7	4.0	4.1	3.3	3.6	4.9	3.1	3.9	3.5	3.1	3.8	4.6	3.4	2.7	3.1	3.7	2.2	3.7	2.3	2.3	2.3	
8	0.1	.	0.3	0.2	.	0.4	.	.	0.1	0.2	0.2	0.3	0.2	0.1	0.2	0.2	0.4	0.5	0.2	0.2	
9	.	0.1	0.2	.	.	.	.	.	.	0.1	.	0.2	.	.	.	.	.	.	.	0.1	.
10	2.5	3.1	0.6	0.6	2.5	0.5	2.4	1.2	0.9	1.6	0.7	0.5	1.1	1.0	0.6*	1.2	1.2	1.1	0.8	0.8	
11	0.5	0.9	.	0.3	0.5	0.1	1.0	0.5	.	0.5	.	0.1	0.1	0.6	.	0.1	.	0.3	.	0.1	
12	.	.	.	.	.	.	.	.	.	.	.	.	.	.	.	.	.	.	.	.	.
13	0.9	1.1	0.2	0.4	0.9	0.5	0.5	0.7	0.3	0.8	0.6	0.5	0.1	0.2	0.2	0.2	.	.	.	0.2	
14	0.1	.	.	.	.	.	.	.	.	.	.	.	0.1	.	.	.	.	.	.	.	0.1
15	.	.	.	.	.	.	.	.	.	.	.	.	.	.	.	.	.	.	.	.	.
16	.	.	.	.	.	.	.	.	.	.	.	.	.	.	.	.	.	.	.	.	.
17	.	.	.	.	.	.	.	.	.	.	.	.	.	.	.	.	.	.	.	.	.
18	3.5	2.8	3.2	4.6	3.8	3.8	4.0	4.2	3.6	3.1	3.2	4.4	3.2	2.2	3.4	2.4	2.6	3.1	2.2	3.2	
19	1.1	3.7	1.9	0.4	1.5	1.6	1.3	1.4	1.7	1.4	1.4	1.4	2.0	1.6	1.3	2.1	2.8	2.2	1.5	2.4	
20	0.1	.	0.2	.	.	0.1	0.1	.	.	0.1	.	.	.	.	.	.	.	0.1	.	.	0.1
21	.	.	.	.	.	.	.	.	.	.	.	.	.	.	.	.	.	.	.	.	.
22	0.5	0.7	0.3	0.2	0.4	0.4	0.2	1.0	0.4	0.1	0.1	0.1	0.3	0.5	0.3	0.4	.	0.1	.	0.1	
23	.	.	.	.	.	.	.	.	.	.	.	.	.	.	.	.	.	.	0.3	0.4	0.4
24	3.0	2.6	3.6	3.0*	2.6	3.9	2.0	3.6	4.2	3.0	2.9	3.4	5.1	8.4	4.0	4.2	3.9	5.2	7.3	4.9	
25	2.1	2.1	0.7	1.6	2.8	0.9	3.0	1.3	1.0	1.9	1.8	1.1	0.5	0.6	0.7	0.7	1.3	0.8	0.4	0.7	
26	0.2	0.7	.	.	.	0.3	0.5	0.1	.	0.1	0.3	0.2	.	.	.	.	.	.	0.9	0.3	
27	0.9	0.2	3.6	4.8	1.6	2.4	0.8	1.1	3.5	1.4	3.7	2.8	5.5	5.8	4.0*	6.0	4.3	6.9	2.9	7.7	
28	1.1	1.7	1.3	1.2	2.3	1.8	0.9	0.6	0.8	1.2	3.5	1.4	0.2	0.1	1.0*	0.4	.	0.9	0.6	0.9	
29	0.1	0.3	0.5	.	.	0.2	.	0.6	.	0.1	0.1	.	.	0.1	.	.	.	.	0.1	0.1	
30	.	.	.	.	.	.	.	.	.	.	.	.	.	.	.	.	.	0.2	0.3	.	.
I	19.3	16.1	24.5	20.4	19.8	26.6	18.1	26.2	26.3	22.8	20.0	21.2	21.0	20.0	22.7*	23.9	21.7	20.0	18.7	19.1	
NORM	21.5	21.6	21.0	22.3	21.1	21.9	21.4	22.3	20.4	22.4	22.8		22.0	21.5	21.4	21.7			18.4	20.6	
II	6.2	8.5	5.5	5.7	6.7	6.1	6.9	6.8	5.6	5.9	5.3	6.4	5.4	4.6	4.9	4.8	5.4	5.7	3.7	6.1	
NORM	28.3	28.2	25.9	28.7	27.4	28.2	26.5	27.9	26.9	27.3	27.8		27.2	28.6	27.6	25.8			24.9	26.1	
III	7.9	8.3	10.0	10.8*	9.7	9.9	7.4	8.3	9.9	8.3	12.6	9.5	11.6	15.5	10.0*	11.7	9.5	14.4	12.8	15.1	
NORM	24.3	23.7	21.5	24.3	22.1	22.3	22.5	24.6	20.7	22.4	23.5		21.1	22.0	22.5	22.0			19.4	21.0	
MND	33.4	32.9	40.0	36.9	36.2	42.6	32.4	41.3	41.8	37.0	37.9	37.1	38.0	40.1	37.6	40.4	36.6	40.1	35.2	40.3	
NORM	74.1	73.5	68.4	75.3	70.6	72.4	70.4	74.8	67.9	72.0	74.2		70.3	72.1	71.5	69.5			62.7	67.7	
DISTRICT 14			DISTRICT 15																		
NR	967	970	962	963	965	966	968	969	971	973	974	979	980	981	982						
DAG	HEI BLOEM	STRAMP ROY	UBACHS BERG	VAL KEN BURG	SCHAES BERG	SCHIN NEN	VAALS	STEIN	NOOR BEEK	BEEK	BUCH TEN	ECHT	EPEN	OOST-MAAR LAND	SCHIN VELD						
1	.	.	.	.	0.1	.	.	.	.	.	.	.	.	.	.						
2	1.7	1.0	6.4	7.3	5.9	5.1	5.2	2.9	5.8	3.1	3.3	1.9	5.2	7.6	4.2						
3	5.9	4.1	1.9	1.5	1.9	2.5	1.8	2.4	3.0	2.0	3.2	3.0	2.6	2.3	1.3						
4	4.6	3.6	1.6	1.5	2.3	2.5	1.0	4.4	1.6	2.5	3.6	3.5	1.5	3.1	3.2						
5	4.0	3.5	3.0	3.8	2.3	2.9	3.8	2.1	3.0	2.2	1.4	1.7	2.9	3.8	2.7						
6	3.5	2.9	1.1	1.3	4.1	3.2	0.9	1.5	1.5	2.2	3.0	1.6	1.8	1.4	4.2						
7	1.9	2.0	5.2	5.2	4.4	4.6	7.1	3.7	5.8	3.8	2.9	2.5	8.1	3.1	3.2						
8	0.3	0.1	0.4	.	0.3	.	0.3	0.2	.	.	0.2	.	.	0.1	.						
9	.	.	.	0.1	.	.	0.2	.	0.5	.	.	.	.	.	.						
10	1.2	1.0	2.1	2.0	2.3	2.1	2.2	1.2	2.1	1.8	0.4	1.2	1.9	2.3	2.2						
11	.	.	0.8	0.7	0.7	0.6	0.8	0.2	0.6	0.3	0.3	0.1	0.9	0.6	0.4						
12	.	.	.	.	.	.	.	.	.	.	.	.	.	.	.						
13	.	0.3	.	.	.	.	.	.	.	.	.	.	.	0.2	.						
14	.	.	.	0.1	0.4	0.2	0.2	.	0.2	.	.	0.1	0.4	0.4	.						
15	.	.	.	.	.	.	.	.	.	.	.	.	.	.	.						
16	.	.	.	.	.	.	.	.	.	.	.	.	.	.	.						
17	.	.	.	.	.	.	.	.	.	.	.	.	.	.	.						
18	3.5	3.4	1.4	1.7	1.6	1.2	1.7	1.2	1.8	1.2	1.7	2.4	1.4	1.3	0.5						
19	1.6	2.0	2.6	2.6	2.3	2.0	3.3	1.6	3.3	2.2	1.6	0.7	2.9	4.3	2.0						
20	.	.	.	0.1	0.2	.	.	0.1	.	0.1	0.1	.	0.5	.	.						
21	.	.	.	.	.	.	.	.	.	.	.	.	.	.	.						
22	0.4	0.4	.	.	.	.	.	0.2	.	.	0.2	0.1	.	.	0.4						
23	.	.	.	.	.	.	.	.	.	.	.	.	.	.	.						
24	5.3	5.9	12.5	11.1	10.0	9.6	14.3	8.5	12.7	8.5	8.7	8.1	14.2	11.3	8.7						
25	0.4	0.6	1.3	1.3	1.0	0.9	0.9	1.0	0.8	1.2	0.7	1.5	1.2	1.0	0.6						
26	0.5	0.2	.	.	0.1	.	.	.	0.4	.	.	0.5	.	.	.						
27	5.0	3.7	1.6	1.7	2.3	1.8	1.6	2.1	1.3	1.4	3.6	2.6	1.7	1.0	2.1						
28	0.4	0.2	1.2	0.3	0.2	0.5	0.2	0.6	0.6	0.3	0.5	0.5	0.7	0.3	0.3						
29	.	.	.	0.2	.	.	.	.	0.7	.	.	.	0.2	0.1	.						
30	.	.	0.6	.	0.2	.	0.3	0.2	.	.	0.3	0.2	.	0.4	0.3						
I	23.1	18.2	21.7	22.7	23.6	22.9	22.5	18.4	23.3	17.6	18.0	15.4	24.0	23.7	21.0						
NORM	20.1	19.5	19.8	21.7	20.2	21.6	22.4	20.5	20.2	19.6	18.4	17.5	21.1	18.4							
II	5.1	5.7	4.8	5.2	5.2	4.0	6.0	3.1	5.9	3.8	3.7	3.3	6.1	6.8	2.9						
NORM	26.6	25.4	28.6	29.9	27.3	30.2	32.2	29.0	27.7	27.9	26.1	23.5	29.1	25.0							
III	12.0	11.0	17.2	14.6	13.8	12.8	17.3	12.6	16.5	11.4	14.0	13.5	18.0	14.1	12.4						
NORM	21.0	19.4	21.1	22.4	20.7	23.3	24.8	23.1	21.9	20.4	20.8	18.2	22.9	19.4							
MND	40.2	34.9	43.7	42.5	42.6	39.7	45.8	34.1	45.7	32.8	35.7	32.2	48.1	44.6	36.3						
NORM	67.7	64.3	69.4	74.0	68.3	75.2	79.3	72.5	69.9	67.9	65.3	59.1	73.1	62.9							



## Kaart met meteorologische stations

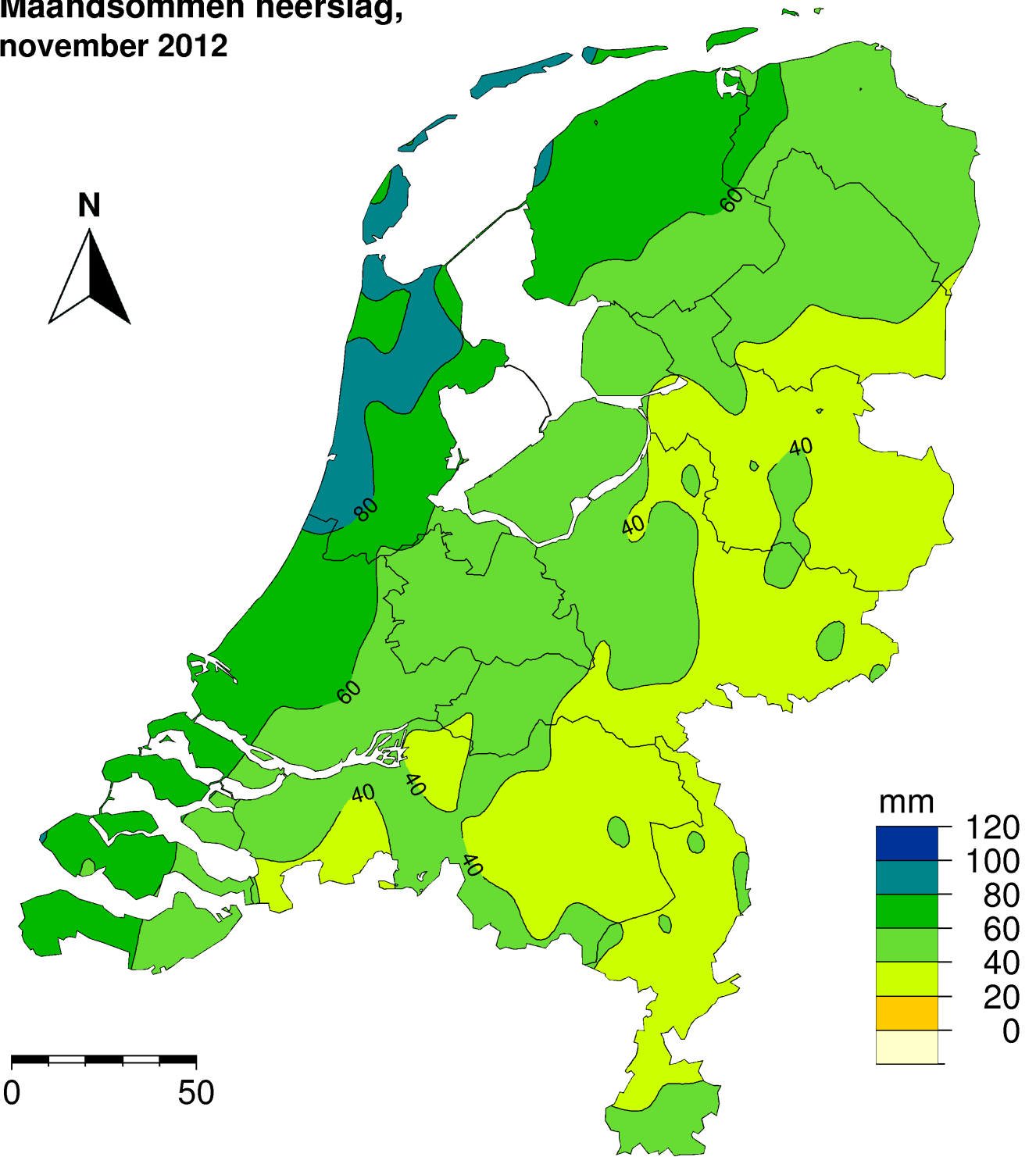




- Neerslagstations  
handmatig 08.00 - 08.00 UT



# Maandsommen neerslag, november 2012





Dit rapport is een uitgave van:

**Koninklijk Nederlands Meteorologisch Instituut**  
Postbus 201 | 3730 AE De Bilt  
[www.knmi.nl](http://www.knmi.nl) | [klimaatdesk@knmi.nl](mailto:klimaatdesk@knmi.nl)