



Koninklijk Nederlands  
Meteorologisch Instituut  
*Ministerie van Infrastructuur en Milieu*

# Maandoverzicht van het weer in Nederland

januari 2008

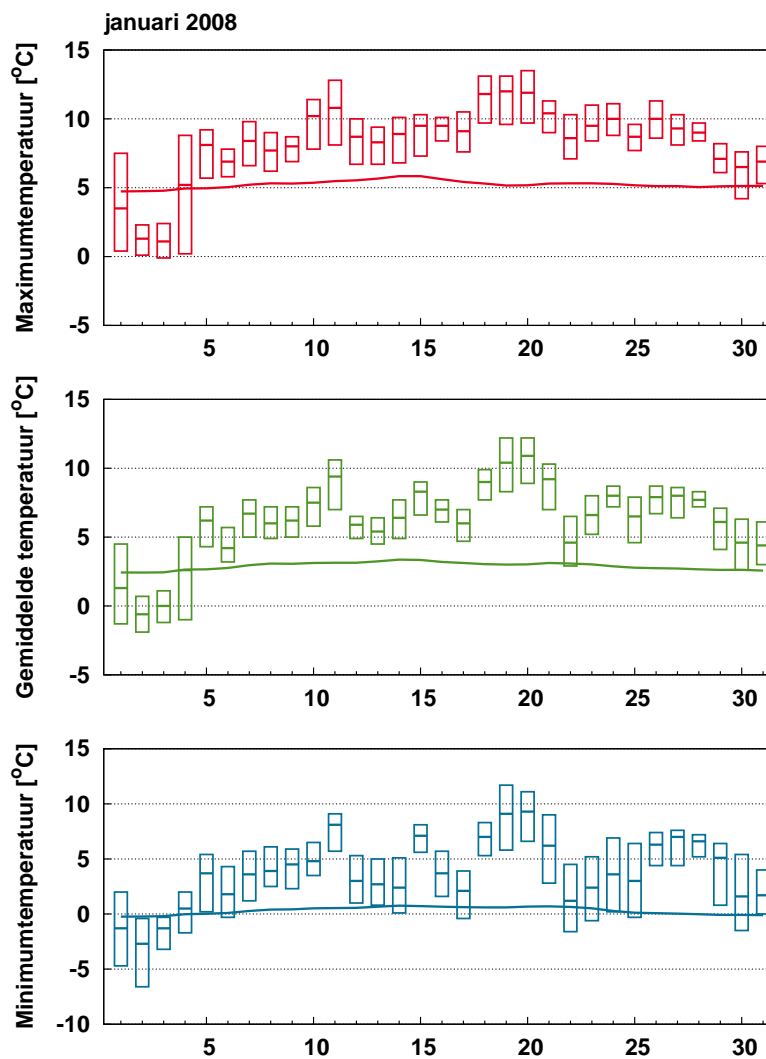


Januari 2008: Januari 2008: Uitzonderlijk zacht, nat en normale hoeveelheid zon

---

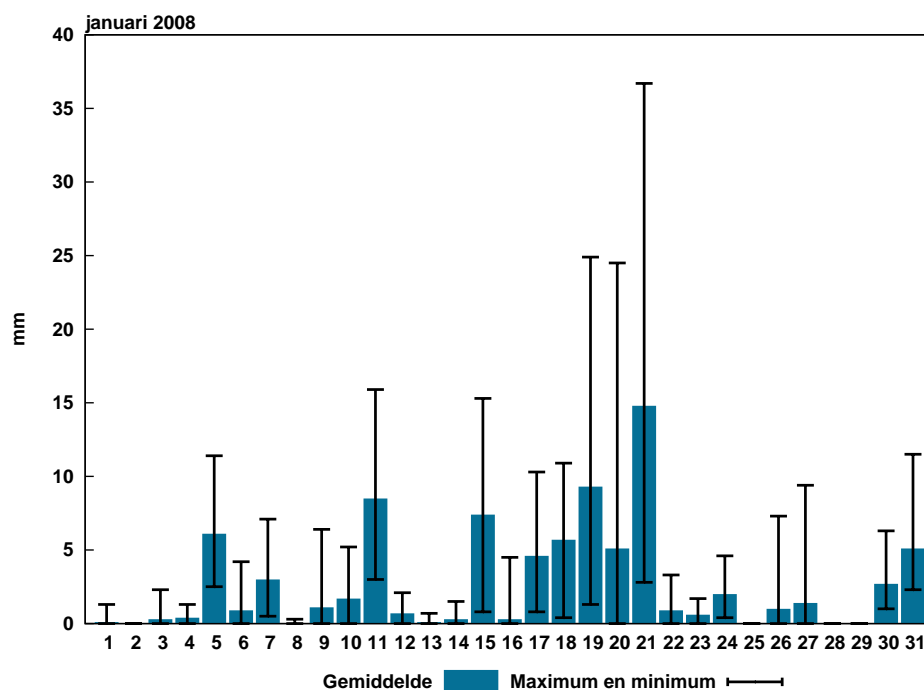
Voor een uitgebreide beschrijving van het weer in januari 2008 zie:

<http://www.knmi.nl/nederland-nu/klimatologie/maand-en-seizoensoverzichten/2008/januari>



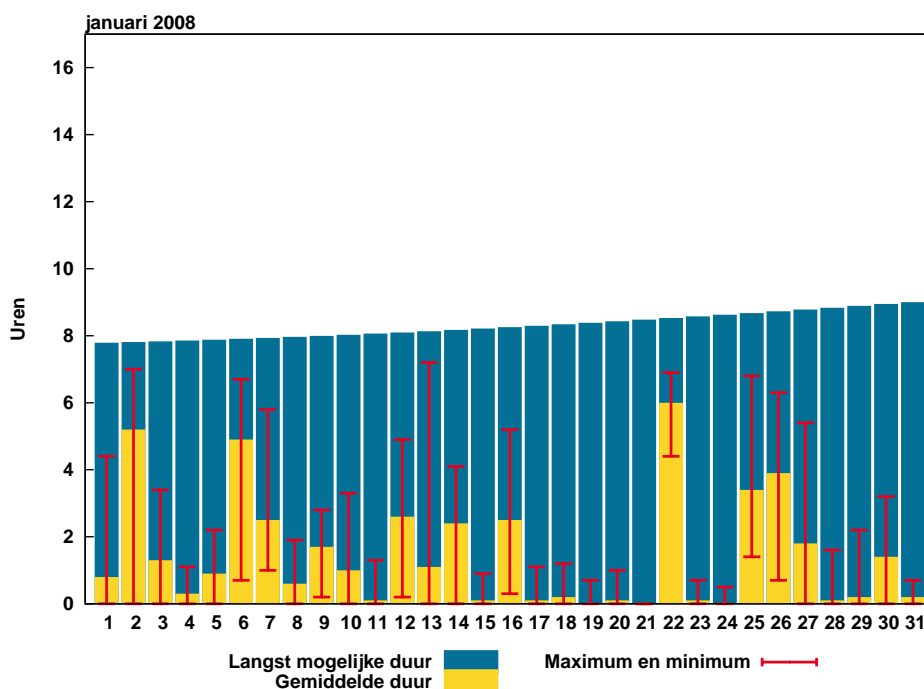
Figuur 1: Temperatuurverloop

De balkjes geven voor ieder element per etmaal de hoogste en laagste waarde aan zoals die gemeten is op één van de KNMI-stations. De rode (maximum), groene (gemiddelde) en blauwe (minimum) lijn geven het vijf-daags voortschrijdend gemiddelde aan over alle KNMI-stations, gemiddeld over het tijdvak 1971-2000.



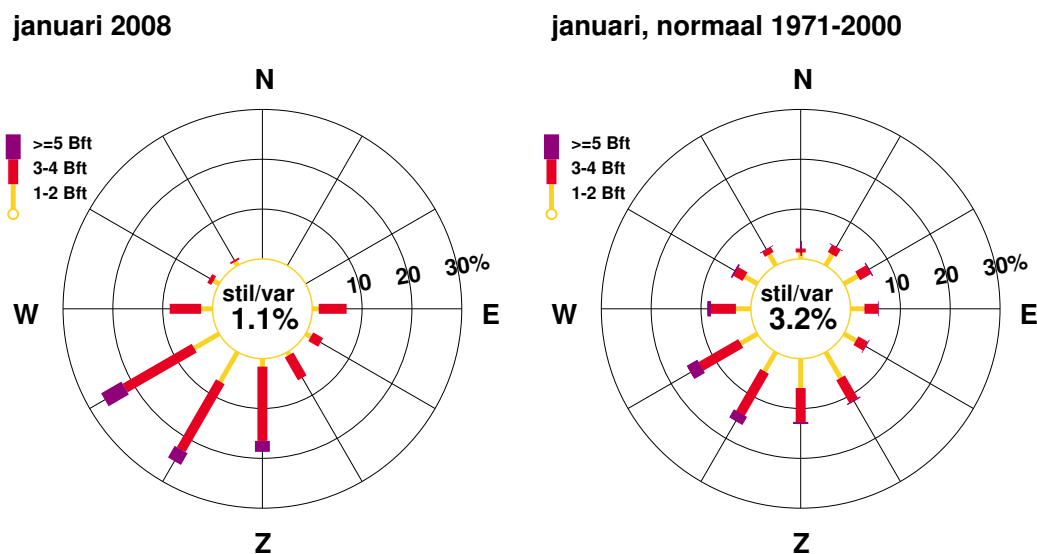
Figuur 2: Etmaalsom neerslag

De blauwe balkjes tonen de gemeten etmaalsommen neerslag, gemiddeld over alle KNMI-stations. De zwarte lijnen geven de laagste en hoogste etmaalsom, gemeten op één van de stations.



Figuur 3: Etmaalsom zonneshijnduur

De gele balkjes tonen de etmaalsommen zonneshijnduur, gemiddeld over alle KNMI-stations. De rode lijnen geven de laagste en hoogste etmaalsom, gemeten op één van de stations. De blauwe balkjes geven de theoretisch langst mogelijke zonneshijnduur.



Figuur 4: Windroos

In de windroos zijn de windrichtingen in klassen van 30° verdeeld. Voor iedere klasse is in drie Beaufortklassen aangegeven in hoeveel procent van de gevallen deze voorkwam (relatieve frequentie). De windroos heeft betrekking op het KNMI-station De Bilt.

| Extremen                    |          |                            |
|-----------------------------|----------|----------------------------|
| Hoogste temperatuur:        | 13.5 °C  | te Westdorpe op 20 januari |
| Laagste temperatuur:        | -6.6 °C  | te Twenthe op 2 januari    |
| Grootste aantal zonuren:    | 66.9 uur | te Vlissingen              |
| Kleinste aantal zonuren:    | 24.7 uur | te Nieuw Beerta            |
| Grootste maandsom neerslag: | 130.7 mm | te Hoogeveen               |
| Kleinste maandsom neerslag: | 36.5 mm  | te Vlissingen              |
| Grootste dagsom neerslag:   | 36.7 mm  | te Eelde op 21 januari     |

## Landgemiddelden

| Decade | Temperatuur (°C) |     |              |     |              |     | Zonneschijn (uren) (percentage) |      |      |    |
|--------|------------------|-----|--------------|-----|--------------|-----|---------------------------------|------|------|----|
|        | Gem.             | N   | Gem. dagmax. | N   | Gem. dagmin. | N   | Gem.                            | N    | Gem. | N  |
| I      | 4.2              | 2.7 | 6.2          | 5.0 | 2.1          | 0.2 | 19.8                            | 12.9 | 25   | 17 |
| II     | 7.8              | 2.8 | 10.0         | 5.1 | 5.4          | 0.4 | 11.1                            | 18.5 | 14   | 22 |
| III    | 6.7              | 3.0 | 8.6          | 5.2 | 4.1          | 0.5 | 18.4                            | 20.2 | 19   | 21 |
| Maand  | 6.3              | 2.9 | 8.3          | 5.1 | 3.9          | 0.4 | 49.3                            | 51.7 | 19   | 20 |

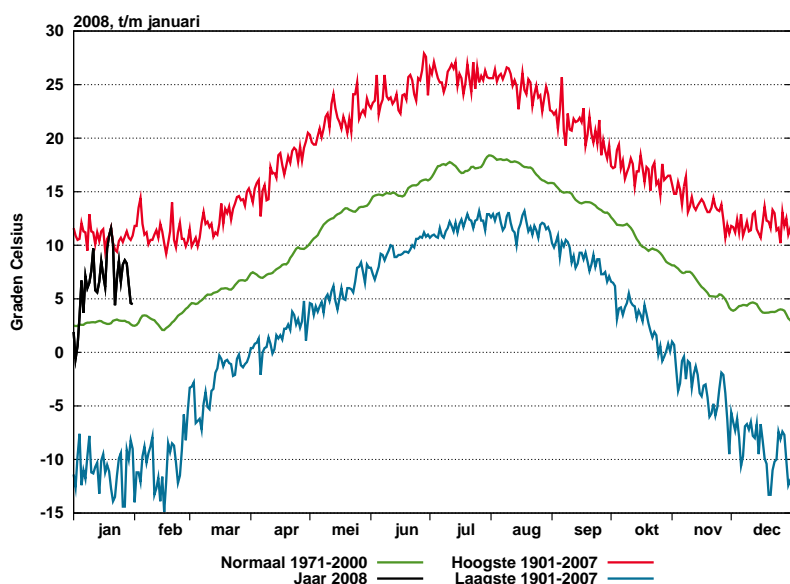
| Decade | Luchtdruk zeeniveau (hPa) |        | Neerslag (mm) |      | Windsnelheid (m/s) |     | Globale straling (J/cm2) |      |
|--------|---------------------------|--------|---------------|------|--------------------|-----|--------------------------|------|
|        | Gem.                      | N      | Gem.          | N    | Gem.               | N   | Gem.                     | N    |
| I      | 1011.3                    | 1016.0 | 13.6          | 26.8 | 6.9                | 6.0 | 2100                     | 1830 |
| II     | 1005.1                    | 1017.0 | 42.1          | 20.8 | 8.3                | 5.9 | 1707                     | 2360 |
| III    | 1024.4                    | 1014.9 | 28.5          | 25.2 | 6.9                | 5.9 | 2535                     | 3034 |
| Maand  | 1013.9                    | 1015.9 | 84.2          | 72.8 | 7.3                | 5.9 | 6342                     | 7225 |

## Maandgemiddelden en maandsommen, temperatuur en neerslag

| Station          | Temperatuur (°C) |  |                   |   |         |       |                   |   | Neerslag (mm) |       |      |  |             |  |       |      |   |    |       |      |      |    |
|------------------|------------------|--|-------------------|---|---------|-------|-------------------|---|---------------|-------|------|--|-------------|--|-------|------|---|----|-------|------|------|----|
|                  | Gem.             |  | Dagelijks maximum |   |         |       | Dagelijks minimum |   |               |       | Som  |  | Max. dagsom |  | Datum |      |   |    |       |      |      |    |
|                  |                  |  | Gem.              | N | Hoogste | Datum | Gem.              | N | Laagste       | Datum |      |  |             |  |       |      |   |    |       |      |      |    |
| Lauwersoog       | 5.7              |  | 7.5               |   | 11.1    |       | 19                |   | 3.6           |       | -2.0 |  | 1           |  | 104.9 | 28.7 |   | 21 |       |      |      |    |
| Hoorn (Tersch.)  | 5.6              |  | 7.3               |   | 10.4    |       | 20                |   | 3.7           |       | -1.5 |  | 3           |  | 93.9  | 26.7 |   | 21 |       |      |      |    |
| Vlieland         | 6.2              |  | 7.7               |   | 9.9     |       | 19                |   | 4.5           |       | -1.1 |  | 3           |  |       |      |   |    |       |      |      |    |
| Leeuwarden       | 5.6              |  | 7.7               |   | 4.6     |       | 11.1              |   | 19            |       | 3.0  |  | -0.2        |  | -3.6  |      | 1 |    | 117.4 | 65.6 | 31.3 | 21 |
| Nieuw Beerta     | 5.6              |  | 7.7               |   | 12.3    |       | 19                |   | 2.9           |       | -2.6 |  | 1           |  | 106.3 | 31.3 |   | 21 |       |      |      |    |
| Eelde            | 5.7              |  | 7.9               |   | 4.4     |       | 12.0              |   | 19            |       | 3.0  |  | -0.8        |  | -3.4  |      | 1 |    | 125.8 | 69.0 | 36.7 | 21 |
| De Kooy          | 6.2              |  | 7.9               |   | 5.2     |       | 10.6              |   | 19            |       | 4.1  |  | 0.8         |  | -1.3  |      | 2 |    | 90.9  | 64.4 | 25.7 | 21 |
| Stavoren         | 5.4              |  | 7.1               |   | 10.6    |       | 18                |   | 3.3           |       | -4.2 |  | 1           |  | 92.8  | 25.0 |   | 21 |       |      |      |    |
| Hoogeveen        | 5.7              |  | 7.9               |   | 12.7    |       | 19                |   | 3.2           |       | -3.8 |  | 2           |  | 130.7 | 36.4 |   | 21 |       |      |      |    |
| Marknesse        | 5.9              |  | 7.9               |   | 12.1    |       | 18                |   | 3.5           |       | -2.7 |  | 2           |  | 91.8  | 20.1 |   | 21 |       |      |      |    |
| Berkhout         | 6.3              |  | 8.3               |   | 11.8    |       | 19                |   | 4.0           |       | -1.3 |  | 2           |  | 92.5  | 17.3 |   | 21 |       |      |      |    |
| Wijk aan Zee     | 6.6              |  | 8.2               |   | 10.4    |       | 10                |   | 4.9           |       | -2.3 |  | 2           |  | 90.5  | 15.9 |   | 11 |       |      |      |    |
| Lelystad         | 6.2              |  | 8.3               |   | 12.7    |       | 20                |   | 3.5           |       | -2.9 |  | 2           |  | 93.9  | 19.7 |   | 21 |       |      |      |    |
| Heino            | 6.0              |  | 8.2               |   | 12.9    |       | 19                |   | 3.4           |       | -5.4 |  | 2           |  | 92.6  | 16.3 |   | 21 |       |      |      |    |
| Schiphol         | 6.6              |  | 8.7               |   | 5.4     |       | 12.4              |   | 20            |       | 4.0  |  | 0.5         |  | -2.5  |      | 2 |    | 76.0  | 62.1 | 11.7 | 11 |
| Twente           | 5.9              |  | 8.1               |   | 4.4     |       | 12.4              |   | 19            |       | 3.3  |  | -0.6        |  | -6.6  |      | 2 |    | 108.5 | 70.6 | 15.7 | 19 |
| Valkenburg       | 6.7              |  | 8.7               |   | 5.6     |       | 11.8              |   | 20            |       | 4.6  |  | 0.7         |  | -2.0  |      | 2 |    | 99.1  | 64.9 | 14.7 | 11 |
| De Bilt          | 6.5              |  | 8.8               |   | 5.2     |       | 12.5              |   | 20            |       | 3.8  |  | 0.0         |  | -2.4  |      | 2 |    | 96.3  | 67.0 | 14.7 | 19 |
| Hupsel           | 5.9              |  | 8.1               |   | 12.3    |       | 19                |   | 3.4           |       | -4.6 |  | 2           |  | 104.8 | 24.9 |   | 19 |       |      |      |    |
| Deelen           | 5.7              |  | 8.0               |   | 4.6     |       | 12.3              |   | 19            |       | 3.1  |  | -0.5        |  | -3.3  |      | 2 |    | 95.0  | 20.3 |      | 19 |
| Hoek van Holland | 6.7              |  | 8.5               |   | 10.5    |       | 20                |   | 5.0           |       | -1.6 |  | 2           |  | 72.0  | 12.1 |   | 11 |       |      |      |    |
| Cabauw           | 6.4              |  | 8.7               |   | 12.5    |       | 20                |   | 3.7           |       | -2.6 |  | 2           |  | 66.7  | 10.2 |   | 11 |       |      |      |    |
| Rotterdam        | 6.8              |  | 8.7               |   | 5.7     |       | 12.1              |   | 20            |       | 4.3  |  | 0.7         |  | -2.0  |      | 2 |    | 64.8  | 67.0 | 10.2 | 11 |
| Herwijnen        | 6.3              |  | 8.7               |   | 12.8    |       | 19                |   | 3.7           |       | -3.3 |  | 2           |  | 61.9  | 8.8  |   | 19 |       |      |      |    |
| Volkel           | 5.9              |  | 8.3               |   | 5.2     |       | 12.7              |   | 19            |       | 2.9  |  | -0.2        |  | -4.6  |      | 2 |    | 68.0  | 60.5 | 18.0 | 19 |
| Gilze-Rijen      | 6.5              |  | 8.9               |   | 5.5     |       | 13.1              |   | 19            |       | 3.5  |  | -0.1        |  | -3.6  |      | 2 |    | 73.1  | 69.9 | 16.5 | 19 |
| Wilhelminadorp   | 6.7              |  | 8.9               |   | 12.7    |       | 19                |   | 4.4           |       | -1.4 |  | 2           |  | 47.0  | 6.6  |   | 5  |       |      |      |    |
| Arcen            | 6.3              |  | 8.7               |   | 13.1    |       | 18                |   | 3.7           |       | -3.4 |  | 2           |  | 42.6  | 12.1 |   | 19 |       |      |      |    |
| Vlissingen       | 6.8              |  | 8.5               |   | 5.6     |       | 12.0              |   | 18            |       | 5.0  |  | 1.9         |  | -0.6  |      | 3 |    | 36.5  | 58.7 | 4.3  | 11 |
| Woensdrecht      | 6.7              |  | 8.9               |   | 13.0    |       | 20                |   | 4.1           |       | -3.2 |  | 3           |  |       |      |   |    |       |      |      |    |
| Eindhoven        | 6.4              |  | 8.8               |   | 5.4     |       | 13.1              |   | 19            |       | 3.5  |  | 0.0         |  | -2.0  |      | 2 |    | 68.7  | 15.8 |      | 19 |
| Westdorpe        | 6.9              |  | 9.0               |   | 13.5    |       | 20                |   | 4.4           |       | -1.9 |  | 2           |  | 64.5  | 11.4 |   | 5  |       |      |      |    |
| Ell              | 6.3              |  | 8.7               |   | 13.0    |       | 20                |   | 3.7           |       | -3.4 |  | 2           |  | 59.8  | 8.3  |   | 5  |       |      |      |    |
| Maastricht       | 6.1              |  | 8.3               |   | 5.0     |       | 12.9              |   | 19            |       | 3.4  |  | -0.1        |  | -4.2  |      | 2 |    | 63.6  | 60.5 | 8.5  | 19 |

## Maandgemiddelden en maandsommen, overige

| Station          | Globale straling (J/cm <sup>2</sup> ) |      | Zonneschijn (berekend uit globale straling) |      |    |    | Relatieve vochtigheid (percentage) |    | Dampdruk (hPa) |     | Windsnelheid (m/s) |     | Luchtdruk zeeniveau (hPa) |        |
|------------------|---------------------------------------|------|---|------|----|----|------------------------------------|----|----------------|-----|--------------------|-----|---------------------------|--------|
|                  | Som                                   | N    | uren  | N    | %  | N  | Gem.                               | N  | Gem.           | N   | Gem.               | N   | Gem.                      | N      |
| Lauwersoog       | 4725                                  |      | 28.7  |      | 11 |    | 88                                 |    | 8.2            |     | 8.0                |     |                           |        |
| Hoorn (Terschl.) | 5698                                  |      | 46.0  |      | 18 |    | 91                                 |    | 8.4            |     | 9.1                |     | 1011.5                    |        |
| Vlieland         |                                       |      |   |      |    |    | 88                                 |    | 8.5            |     | 10.8               |     | 1011.5                    |        |
| Leeuwarden       | 5673                                  |      | 43.2  | 48.4 | 17 | 19 | 88                                 | 90 | 8.2            | 6.8 | 6.9                | 6.0 | 1012.2                    | 1014.8 |
| Nieuw Beerta     | 4645                                  |      | 24.7  |      | 10 |    | 89                                 |    | 8.3            |     | 7.4                |     |                           |        |
| Eelde            | 4760                                  | 6505 | 30.3  | 46.7 | 12 | 18 | 89                                 | 91 | 8.3            | 6.7 | 6.4                | 5.5 | 1012.7                    | 1015.1 |
| De Kooy          | 6224                                  | 7004 | 47.6  | 53.1 | 19 | 21 | 88                                 | 88 | 8.4            | 7.0 | 8.4                | 7.1 | 1012.2                    | 1014.8 |
| Stavoren         | 5654                                  |      | 39.6  |      | 16 |    | 90                                 |    | 8.2            |     | 7.9                |     |                           |        |
| Hoogeveen        | 5062                                  |      | 32.4  |      | 13 |    | 87                                 |    | 8.2            |     | 6.3                |     | 1013.4                    |        |
| Marknesse        | 5402                                  |      | 39.8  |      | 16 |    | 88                                 |    | 8.3            |     | 6.5                |     |                           |        |
| Berkhout         | 5747                                  |      | 39.9  |      | 16 |    | 86                                 |    | 8.4            |     | 7.5                |     |                           |        |
| Wijk aan Zee     | 5924                                  |      | 46.8  |      | 18 |    | 87                                 |    | 8.6            |     |                    |     |                           |        |
| Lelystad         | 5715                                  |      | 41.0  |      | 16 |    | 87                                 |    | 8.4            |     | 6.8                |     | 1013.5                    |        |
| Heino            | 5443                                  |      | 36.9  |      | 14 |    | 87                                 |    | 8.3            |     | 4.8                |     |                           |        |
| Schiphol         | 6086                                  |      | 43.1  | 53.0 | 17 | 21 | 86                                 | 89 | 8.5            | 7.1 | 7.6                | 6.2 | 1013.4                    | 1015.6 |
| Twente           | 5608                                  |      | 38.1  | 45.6 | 15 | 18 | 86                                 | 89 | 8.1            | 6.6 | 5.3                | 4.2 | 1014.4                    | 1016.1 |
| Valkenburg       | 6146                                  |      | 47.4  | 54.0 | 18 | 21 | 86                                 | 86 | 8.6            | 7.0 | 6.6                | 6.2 | 1013.5                    | 1015.6 |
| De Bilt          | 6223                                  | 6938 | 50.1  | 52.4 | 19 | 20 | 86                                 | 88 | 8.5            | 6.8 | 5.4                | 4.1 | 1014.0                    | 1016.0 |
| Hupsel           | 6061                                  |      | 43.5  |      | 17 |    | 88                                 |    | 8.3            |     | 5.3                |     |                           |        |
| Deelen           | 5771                                  |      | 38.7  | 47.4 | 15 | 18 | 91                                 | 88 | 8.5            | 6.6 | 5.9                | 5.2 | 1014.4                    | 1016.2 |
| Hoek van Holland | 6642                                  |      | 54.6  |      | 21 |    | 84                                 |    | 8.4            |     | 9.6                |     | 1013.6                    |        |
| Cabauw           | 6392                                  |      | 51.2  |      | 20 |    | 87                                 |    | 8.5            |     | 7.0                |     | 1014.2                    |        |
| Rotterdam        | 6350                                  |      | 51.9  | 53.7 | 20 | 21 | 85                                 | 89 | 8.5            | 7.2 | 7.1                | 5.9 | 1013.8                    | 1015.9 |
| Hervijnen        | 6370                                  |      | 49.2  |      | 19 |    | 86                                 |    | 8.4            |     | 6.4                |     |                           |        |
| Volkel           | 6152                                  |      | 43.9  |      | 17 |    | 85                                 | 89 | 8.1            | 6.8 | 5.9                | 4.9 | 1015.1                    | 1016.5 |
| Gilze-Rijen      | 6423                                  |      | 47.8  | 50.9 | 18 | 19 | 86                                 | 88 | 8.4            | 6.9 | 5.5                | 4.9 | 1014.8                    | 1016.5 |
| Wilhelminadorp   | 7443                                  |      | 66.3  |      | 25 |    | 86                                 |    | 8.6            |     | 7.2                |     | 1014.3                    |        |
| Arcen            | 6245                                  |      | 46.7  |      | 18 |    | 84                                 |    | 8.2            |     | 4.7                |     |                           |        |
| Vlissingen       | 7485                                  | 7860 | 66.9  | 55.5 | 26 | 21 | 88                                 | 87 | 8.8            | 7.2 | 9.8                | 7.5 | 1014.3                    | 1016.2 |
| Woensdrecht      |                                       |      |   |      |    |    | 85                                 |    | 8.5            |     | 5.3                |     | 1014.8                    |        |
| Eindhoven        | 6511                                  |      | 50.9  | 53.5 | 20 | 21 | 85                                 | 88 | 8.3            | 6.8 | 5.7                | 5.0 | 1015.3                    | 1016.7 |
| Westdorpe        | 6762                                  |      | 56.6  |      | 22 |    | 84                                 |    | 8.5            |     | 6.5                |     |                           |        |
| Ell              | 6970                                  |      | 51.7  |      | 20 |    | 83                                 |    | 8.1            |     | 5.8                |     |                           |        |
| Maastricht       | 7017                                  | 7820 | 51.8  | 50.6 | 20 | 19 | 85                                 | 88 | 8.1            | 6.8 | 6.7                | 5.3 | 1016.5                    | 1017.4 |



Figuur 5: Etmaalwaarden van de gemiddelde temperatuur, De Bilt, 2008

De zwarte lijn toont de gemeten gemiddelde etmaaltemperatuur in het lopende jaar. De rode lijn geeft (per datum) de hoogst gemeten temperatuur sinds 1901, de blauwe lijn de laagste temperatuur. De groene lijn is het vijf-daagse voortschrijdend gemiddelde, gemiddeld over het tijdvak 1971-2000.

Temperatuur, "aantal dagen met"

| Station          | Gemiddelde temperatuur (°C) |   |       |   |       |   |      |    |     |    | Minimum temperatuur (°C) |   |       |   |         |   | Maximum temperatuur (°C) |    |        |   |        |   |        |   |       |   |   |   |
|------------------|-----------------------------|---|-------|---|-------|---|------|----|-----|----|--------------------------|---|-------|---|---------|---|--------------------------|----|--------|---|--------|---|--------|---|-------|---|---|---|
|                  | > 20.0                      |   | 20-15 |   | 15-10 |   | 10-5 |    | 5-0 |    | < 0.0                    |   | < 0.0 |   | < -10.0 |   | < 0.0 (10cm)             |    | > 30.0 |   | > 25.0 |   | > 20.0 |   | < 0.0 |   |   |   |
|                  | A                           | N | A     | N | A     | N | A    | N  | A   | N  | A                        | N | A     | N | A       | N | A                        | N  | A      | N | A      | N | A      | N | A     | N | A | N |
| Lauwersoog       | .                           | . | .     | . | .     | . | .    | 24 | .   | 5  | .                        | 2 | .     | . | .       | . | 4                        | .  | .      | . | .      | . | .      | . | .     | . | . | . |
| Hoorn (Terschl.) | .                           | . | .     | . | .     | . | .    | 25 | .   | 5  | .                        | 1 | .     | . | .       | . | 4                        | .  | .      | . | .      | . | .      | . | .     | . | . | . |
| Vlieland         | .                           | . | .     | . | .     | . | .    | 26 | .   | 4  | .                        | 1 | .     | . | .       | . | 4                        | .  | .      | . | .      | . | .      | . | .     | . | . | . |
| Leeuwarden       | .                           | . | .     | . | .     | . | 0    | 22 | 9   | 6  | 15                       | 3 | 7     | . | .       | . | .                        | .  | .      | . | .      | . | .      | . | .     | . | . | 4 |
| Nieuw Beerta     | .                           | . | .     | . | .     | 1 | .    | 20 | .   | 7  | .                        | 3 | .     | . | .       | . | 6                        | .  | .      | . | .      | . | .      | . | .     | . | . | . |
| Eelde            | .                           | . | .     | . | 1     | 0 | 21   | 8  | 5   | 14 | 4                        | 8 | .     | 4 | 14      | . | 2                        | 8  | 16     | . | .      | . | .      | . | .     | . | . | 5 |
| De Kooy          | .                           | . | .     | . | .     | 0 | 25   | 12 | 4   | 13 | 2                        | 6 | .     | 3 | 11      | . | 1                        | 5  | 12     | . | .      | . | .      | . | .     | . | . | 4 |
| Stavoren         | .                           | . | .     | . | .     | . | 21   | .  | 7   | .  | 3                        | . | .     | 5 | .       | . | 5                        | .  | .      | . | .      | . | .      | . | .     | . | . | 1 |
| Hoogeveen        | .                           | . | .     | . | 2     | . | 20   | .  | 6   | .  | 3                        | . | .     | 4 | .       | . | 4                        | .  | .      | . | .      | . | .      | . | .     | . | . | . |
| Marknesse        | .                           | . | .     | . | 1     | . | 22   | .  | 5   | .  | 3                        | . | .     | 4 | .       | . | 6                        | .  | .      | . | .      | . | .      | . | .     | . | . | . |
| Berkhout         | .                           | . | .     | . | 1     | . | 24   | .  | 5   | .  | 1                        | . | .     | 3 | .       | . | 4                        | .  | .      | . | .      | . | .      | . | .     | . | . | . |
| Wijk aan Zee     | .                           | . | .     | . | .     | . | 27   | .  | 3   | .  | 1                        | . | .     | 3 | .       | . | 3                        | .  | .      | . | .      | . | .      | . | .     | . | . | . |
| Lelystad         | .                           | . | .     | . | 2     | . | 21   | .  | 5   | .  | 3                        | . | .     | 4 | .       | . | 7                        | .  | .      | . | .      | . | .      | . | .     | . | . | . |
| Heino            | .                           | . | .     | . | 2     | . | 20   | .  | 6   | .  | 3                        | . | .     | 4 | .       | . | 7                        | .  | .      | . | .      | . | .      | . | .     | . | . | . |
| Schiphol         | .                           | . | .     | . | 2     | 1 | 23   | 12 | 5   | 13 | 1                        | 6 | .     | 3 | 12      | . | 1                        | 3  | 14     | . | .      | . | .      | . | .     | . | . | 4 |
| Twenthe          | .                           | . | .     | . | 3     | 1 | 20   | 9  | 6   | 13 | 2                        | 8 | .     | 4 | 14      | . | 2                        | 10 | 16     | . | .      | . | .      | . | .     | . | . | 5 |
| Valkenburg       | .                           | . | .     | . | 1     | 0 | 26   | 13 | 3   | 12 | 1                        | 6 | .     | 3 | 11      | . | 1                        | 5  | 14     | . | .      | . | .      | . | .     | . | . | 3 |
| De Bilt          | .                           | . | .     | . | 3     | 1 | 20   | 11 | 7   | 13 | 1                        | 7 | .     | 3 | 13      | . | 2                        | 13 | 16     | . | .      | . | .      | . | .     | . | . | 4 |
| Hupsel           | .                           | . | .     | . | 3     | . | 19   | .  | 7   | .  | 2                        | . | .     | 3 | .       | . | 11                       | .  | .      | . | .      | . | .      | . | .     | . | . | . |
| Deelen           | .                           | . | .     | . | 2     | 1 | 20   | 9  | 7   | 14 | 2                        | 8 | .     | 5 | 14      | . | 2                        | 10 | 17     | . | .      | . | .      | . | .     | . | . | 4 |
| Hoek van Holland | .                           | . | .     | . | 1     | . | 26   | .  | 3   | .  | 1                        | . | .     | 3 | .       | . | 3                        | .  | .      | . | .      | . | .      | . | .     | . | . | . |
| Cabauw           | .                           | . | .     | . | 3     | . | 20   | .  | 7   | .  | 1                        | . | .     | 3 | .       | . | .                        | .  | .      | . | .      | . | .      | . | .     | . | . | . |
| Rotterdam        | .                           | . | .     | . | 3     | 1 | 22   | 13 | 5   | 12 | 1                        | 6 | .     | 3 | 11      | . | 1                        | 7  | 14     | . | .      | . | .      | . | .     | . | . | 3 |
| Herwijnen        | .                           | . | .     | . | 3     | . | 20   | .  | 7   | .  | 1                        | . | .     | 3 | .       | . | 6                        | .  | .      | . | .      | . | .      | . | .     | . | . | . |
| Volkel           | .                           | . | .     | . | 2     | 1 | 20   | 10 | 8   | 13 | 1                        | 7 | .     | 7 | 14      | . | 1                        | 11 | 16     | . | .      | . | .      | . | .     | . | . | 4 |
| Gilze-Rijen      | .                           | . | .     | . | 3     | 1 | 20   | 10 | 7   | 13 | 1                        | 7 | .     | 4 | 13      | . | 2                        | 10 | 16     | . | .      | . | .      | . | .     | . | . | 4 |
| Wilhelminadorp   | .                           | . | .     | . | 3     | . | 21   | .  | 7   | .  | .                        | . | .     | 2 | .       | . | 2                        | .  | .      | . | .      | . | .      | . | .     | . | . | . |
| Arcen            | .                           | . | .     | . | 3     | . | 19   | .  | 8   | .  | 1                        | . | .     | 5 | .       | . | 10                       | .  | .      | . | .      | . | .      | . | .     | . | . | . |
| Vlissingen       | .                           | . | .     | . | 2     | 0 | 26   | 14 | 3   | 13 | .                        | 4 | .     | 2 | 7       | . | 0                        | 2  | 8      | . | .      | . | .      | . | .     | . | . | 3 |
| Woensdrecht      | .                           | . | .     | . | 3     | . | 20   | .  | 6   | .  | 2                        | . | .     | 3 | .       | . | 7                        | .  | .      | . | .      | . | .      | . | .     | . | . | . |
| Eindhoven        | .                           | . | .     | . | 3     | 1 | 20   | 10 | 7   | 13 | 1                        | 7 | .     | 5 | 13      | . | 1                        | 9  | 16     | . | .      | . | .      | . | .     | . | . | 4 |
| Westdorpe        | .                           | . | .     | . | 3     | . | 22   | .  | 5   | .  | 1                        | . | .     | 2 | .       | . | 7                        | .  | .      | . | .      | . | .      | . | .     | . | . | . |
| Eil              | .                           | . | .     | . | 3     | . | 20   | .  | 7   | .  | 1                        | . | .     | 4 | .       | . | 6                        | .  | .      | . | .      | . | .      | . | .     | . | . | . |
| Maastricht       | .                           | . | .     | . | 3     | 1 | 19   | 10 | 8   | 13 | 1                        | 7 | .     | 4 | 14      | . | 2                        | 7  | 16     | . | .      | . | .      | . | .     | . | . | 4 |



## Neerslag, wind en zon, "aantal dagen met"

| Station          | Neerslag (mm) |    |       |    |       |    |        |   | Windkracht (Beaufort)<br>Maximum uurgemiddelde |    |     |    |     |   |     |   | Zonneschijn (percentage) |    |      |    |      |   |
|------------------|---------------|----|-------|----|-------|----|--------|---|--|----|-----|----|-----|---|-----|---|--------------------------|----|------|----|------|---|
|                  | Droog         |    | ≥ 0.1 |    | ≥ 1.0 |    | ≥ 10.0 |   | < 4  |    | ≥ 6 |    | ≥ 7 |   | ≥ 8 |   | Zonloos                  |    | < 20 |    | ≥ 80 |   |
|                  | A             | N  | A     | N  | A     | N  | A      | N | A  | N  | A   | N  | A   | N | A   | N | A                        | N  | A    | N  | A    | N |
| Lauwersoog       | 7             |    | 21    |    | 14    |    | 3      |   | 3  |    | 19  |    | 9   |   | .   |   | 16                       |    | 24   |    | .    |   |
| Hoorn (Tersch.)  | 4             |    | 24    |    | 13    |    | 2      |   | 2  |    | 24  |    | 10  |   | 1   |   | 8                        |    | 19   |    | .    |   |
| Vlieland         |               |    |       |    |       |    |        |   | 1  |    | 28  |    | 21  |   | 5   |   |                          |    |      |    |      |   |
| Leeuwarden       | 5             | 8  | 23    | 18 | 17    | 13 | 2      | 1 | 5  | 16 | 12  | 8  | 2   | 3 | .   | 1 | 9                        | 14 | 22   | 20 | 1    | 1 |
| Nieuw Beerta     | 10            |    | 20    |    | 14    |    | 2      |   | 4  |    | 12  |    | 2   |   | .   |   | 13                       |    | 27   |    | .    |   |
| Eelde            | 5             | 7  | 23    | 18 | 15    | 13 | 3      | 2 | 9  | 17 | 8   | 7  | 1   | 3 | .   | 1 | 15                       | 14 | 24   | 21 | .    | 1 |
| De Kooy          | 4             | 7  | 22    | 19 | 13    | 13 | 2      | 1 | 3  | 11 | 18  | 13 | 7   | 6 | 1   | 2 | 10                       | 12 | 20   | 19 | .    | 1 |
| Stavoren         | 6             |    | 23    |    | 14    |    | 3      |   | 3  |    | 17  |    | 7   |   | 1   |   | 11                       |    | 21   |    | .    |   |
| Hoogeveen        | 6             |    | 20    |    | 15    |    | 2      |   | 7  |    | 10  |    | 1   |   | .   |   | 11                       |    | 23   |    | .    |   |
| Marknesse        | 7             |    | 21    |    | 15    |    | 4      |   | 5  |    | 7   |    | 1   |   | .   |   | 14                       |    | 19   |    | .    |   |
| Berkhout         | 6             |    | 24    |    | 15    |    | 3      |   | 5  |    | 13  |    | 8   |   | .   |   | 13                       |    | 20   |    | .    |   |
| Wijk aan Zee     | 7             |    | 23    |    | 15    |    | 4      |   |  |    |     |    |     |   | .   |   | 12                       |    | 19   |    | 2    |   |
| Lelystad         | 7             |    | 23    |    | 15    |    | 2      |   | 8  |    | 10  |    | 1   |   | .   |   | 14                       |    | 21   |    | 1    |   |
| Heino            | 10            |    | 21    |    | 16    |    | 1      |   | 18   |    | 1   |    | .   |   | .   |   | 11                       |    | 22   |    | .    |   |
| Schiphol         | 7             | 9  | 22    | 17 | 15    | 12 | 1      | 1 | 6  | 15 | 15  | 10 | 8   | 4 | .   | 1 | 13                       | 13 | 22   | 20 | 1    | 2 |
| Twenthe          | 5             | 8  | 23    | 17 | 18    | 12 | 4      | 2 | 15   | 24 | 1   | 2  | .   | 0 | .   | 0 | 11                       | 15 | 22   | 22 | .    | 2 |
| Valkenburg       | 8             | 7  | 22    | 18 | 13    | 12 | 5      | 1 | 10   | 14 | 11  | 10 | .   | 4 | .   | 1 | 12                       | 13 | 21   | 20 | 2    | 1 |
| De Bilt          | 7             | 7  | 23    | 18 | 15    | 13 | 4      | 2 | 17   | 24 | 2   | 2  | .   | 0 | .   | 0 | 11                       | 14 | 18   | 20 | 1    | 2 |
| Hupsel           | 8             |    | 21    |    | 17    |    | 3      |   | 15   |    | 3   |    | .   |   | .   |   | 10                       |    | 20   |    | 1    |   |
| Deelen           | 6             |    | 21    |    | 15    |    | 2      |   | 12   | 18 | 7   | 5  | .   | 1 | .   | 0 | 11                       | 15 | 23   | 22 | 1    | 2 |
| Hoek van Holland | 7             |    | 23    |    | 13    |    | 1      |   | 3  |    | 25  |    | 11  |   | 2   |   | 13                       |    | 20   |    | 1    |   |
| Cabauw           | 9             |    | 21    |    | 13    |    | 1      |   | 7  |    | 12  |    | 5   |   | .   |   | 12                       |    | 18   |    | 2    |   |
| Rotterdam        | 8             | 10 | 21    | 16 | 13    | 11 | 1      | 2 | 7  | 16 | 9   | 9  | 4   | 3 | .   | 1 | 13                       | 13 | 19   | 20 | 1    | 2 |
| Herwijnen        | 9             |    | 20    |    | 13    |    | .      |   | 11   |    | 9   |    | 1   |   | .   |   | 12                       |    | 21   |    | 2    |   |
| Volkel           | 8             | 9  | 18    | 17 | 15    | 12 | 1      | 1 | 13   | 20 | 6   | 5  | 1   | 1 | .   | 0 | 11                       |    | 23   |    | 2    |   |
| Gilze-Rijen      | 7             | 8  | 20    | 17 | 14    | 13 | 1      | 2 | 13   | 20 | 3   | 4  | .   | 1 | .   | 0 | 11                       | 14 | 23   | 21 | 2    | 2 |
| Wilhelminadorp   | 8             |    | 21    |    | 12    |    | .      |   | 6  |    | 11  |    | 7   |   | .   |   | 9                        |    | 18   |    | 2    |   |
| Arcen            | 12            |    | 19    |    | 11    |    | 1      |   | 19   |    | 1   |    | .   |   | .   |   | 10                       |    | 22   |    | 1    |   |
| Vlissingen       | 9             | 8  | 22    | 18 | 13    | 12 | .      | 1 | 2  | 10 | 24  | 14 | 13  | 7 | 6   | 3 | 11                       | 12 | 17   | 20 | 2    | 1 |
| Woensdrecht      |               |    |       |    |       |    |        |   | 16   |    | 2   |    | .   |   | .   |   |                          |    |      |    |      |   |
| Eindhoven        | 7             |    | 22    |    | 15    |    | 1      |   | 14   | 19 | 6   | 5  | .   | 1 | .   | 0 | 10                       | 13 | 23   | 20 | 3    | 2 |
| Westdorpe        | 9             |    | 21    |    | 15    |    | 1      |   | 10   |    | 8   |    | 2   |   | .   |   | 10                       |    | 20   |    | 2    |   |
| Eil              | 7             |    | 22    |    | 15    |    | .      |   | 13   |    | 4   |    | .   |   | .   |   | 10                       |    | 22   |    | 1    |   |
| Maastricht       | 7             | 7  | 19    | 18 | 14    | 12 | .      | 1 | 6  | 17 | 11  | 6  | 2   | 2 | .   | 0 | 10                       | 14 | 23   | 21 | 2    | 2 |

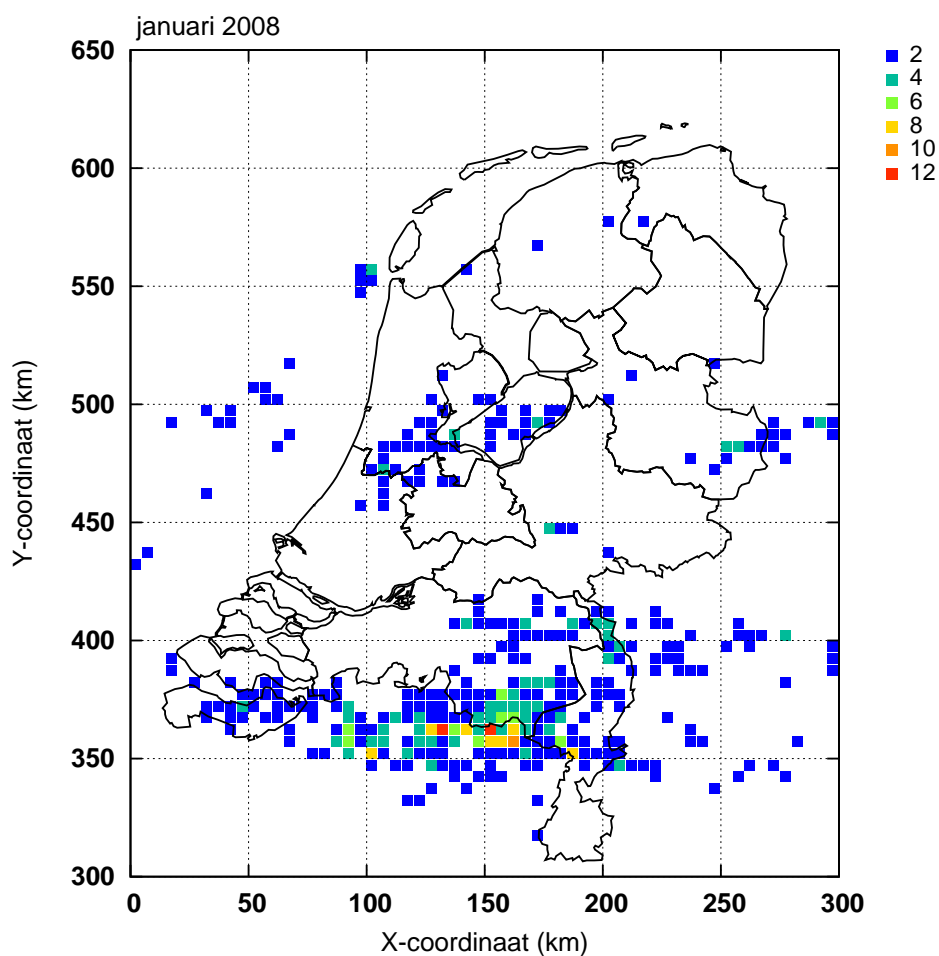
## Onweer, mist en sneeuw, "aantal dagen met"

| Station     | Onweer |   | Mist |   | Sneeuw |   |
|-------------|--------|---|------|---|--------|---|
|             | A      | N | A    | N | A      | N |
| Leeuwarden  | .      | 0 | 4    | 8 | 2      | 7 |
| Eelde       | .      | 0 | 3    | 8 | 3      | 8 |
| De Kooy     | 1      | 0 | 3    | 8 | 2      | 6 |
| Schiphol    | 2      | 1 | 2    | 8 | 1      | 6 |
| Twenthe     | 1      | 1 | 3    | 7 | 2      | 8 |
| Valkenburg  | 1      | 1 | 2    | 7 | 1      | 5 |
| De Bilt     | 1      | 1 | 3    | 8 | 1      | 6 |
| Deelen      | 2      | 1 | 4    | 9 | 1      | 8 |
| Rotterdam   | .      | 1 | 2    | 7 | 1      | 6 |
| Volkel      | 2      | 1 | 3    | 7 | .      | 6 |
| Gilze-Rijen | .      | 1 | 2    | 8 | 1      | 6 |
| Vlissingen  | 1      | 0 | 2    | 6 | 1      | 5 |
| Eindhoven   | 3      | 0 | 3    | 7 | 1      | 6 |
| Maastricht  | 1      | 1 | 2    | 6 | 1      | 7 |



Bodemtemperaturen (°C)

| Datum | Nieuw Beerta |     |     |     | Marknesse   |     |     |     | De Bilt     |     |     |     | Wilhelminadorp |     |     |     |
|-------|--------------|-----|-----|-----|-------------|-----|-----|-----|-------------|-----|-----|-----|----------------|-----|-----|-----|
|       | Diepte (cm)  |     |     |     | Diepte (cm) |     |     |     | Diepte (cm) |     |     |     | Diepte (cm)    |     |     |     |
|       | 10           | 20  | 50  | 100 | 10          | 20  | 50  | 100 | 10          | 20  | 50  | 100 | 10             | 20  | 50  | 100 |
| 2     | 2.2          | 2.9 | 4.7 | 7.0 | 3.0         | 3.9 | 5.2 | 6.7 | 4.9         | 5.6 | 6.8 | 7.7 | 5.1            | 5.6 | 6.4 | 7.2 |
| 7     | 2.4          | 2.8 | 4.0 | 6.6 | 3.6         | 3.8 | 4.6 | 6.3 | 4.5         | 5.0 | 6.2 | 7.4 | 4.9            | 5.1 | 5.9 | 6.9 |
| 12    | 6.2          | 6.0 | 5.2 | 6.6 | 6.4         | 6.1 | 5.6 | 6.2 | 6.8         | 6.8 | 7.1 | 7.5 | 6.6            | 6.6 | 6.5 | 6.9 |
| 17    | 4.8          | 5.3 | 5.7 | 6.9 | 5.4         | 5.8 | 6.0 | 6.5 | 5.6         | 6.4 | 7.2 | 7.7 | 5.9            | 6.2 | 6.8 | 7.1 |
| 22    | 6.5          | 7.1 | 7.0 | 7.1 | 7.3         | 7.6 | 7.1 | 6.9 | 8.2         | 8.4 | 8.5 | 8.1 | 8.1            | 8.2 | 7.9 | 7.6 |
| 27    | 6.6          | 6.5 | 6.5 | 7.5 | 6.7         | 6.7 | 6.7 | 7.2 | 7.1         | 7.2 | 7.8 | 8.2 | 6.8            | 7.0 | 7.3 | 7.8 |
| Gem.  | 4.9          | 5.0 | 5.6 | 7.0 | 5.5         | 5.6 | 5.9 | 6.7 | 6.3         | 6.5 | 7.2 | 7.8 | 6.2            | 6.4 | 6.8 | 7.3 |



Figuur 6: Onweer

Ontladingen in Nederland, de kustwateren en het aangrenzende buitenland, zoals geregistreerd door het Nederlands-Belgische detectiesysteem. Het kaartje geeft het aantal ont-ladingen per 5×5 km vak.

## Etmaalgemiddelden en etmaalsommen

| Datum    | Temperatuur (°C) |         |         |            |            |         |         |         |            |            |         |         |         |            |            |
|----------|------------------|---------|---------|------------|------------|---------|---------|---------|------------|------------|---------|---------|---------|------------|------------|
|          | Gemiddeld        |         |         |            |            | Maximum |         |         |            |            | Minimum |         |         |            |            |
|          | Eelde            | De Kooy | De Bilt | Vlissingen | Maastricht | Eelde   | De Kooy | De Bilt | Vlissingen | Maastricht | Eelde   | De Kooy | De Bilt | Vlissingen | Maastricht |
| 1        | -0.7             | 1.6     | 1.9     | 4.5        | 2.0        | 2.3     | 4.3     | 4.5     | 5.5        | 4.0        | -3.4    | -0.2    | -0.6    | 2.0        | -1.4       |
| 2        | -0.4             | -0.1    | -0.6    | 0.7        | -1.5       | 1.1     | 1.2     | 1.8     | 2.1        | 0.1        | -2.8    | -1.3    | -2.4    | -0.5       | -4.2       |
| 3        | -0.9             | -0.2    | 0.6     | 0.9        | 0.1        | 0.2     | 0.3     | 1.8     | 2.2        | 1.6        | -1.6    | -0.7    | -1.8    | -0.6       | -1.3       |
| 4        | -0.1             | 2.1     | 3.3     | 5.0        | 4.1        | 1.4     | 3.9     | 5.9     | 8.0        | 7.6        | -1.0    | 0.1     | 1.5     | 2.0        | 1.3        |
| 5        | 5.7              | 6.3     | 6.7     | 6.6        | 6.6        | 7.7     | 7.9     | 8.5     | 8.6        | 8.6        | 1.4     | 3.6     | 4.6     | 4.6        | 4.5        |
| 6        | 3.7              | 4.8     | 3.7     | 5.5        | 5.0        | 6.5     | 7.0     | 7.8     | 6.6        | 6.7        | 1.5     | 2.2     | 1.4     | 3.8        | 3.1        |
| 7        | 5.6              | 6.7     | 7.1     | 7.3        | 7.5        | 7.8     | 7.7     | 9.0     | 8.8        | 8.9        | 1.7     | 3.4     | 3.6     | 5.7        | 5.3        |
| 8        | 5.9              | 6.9     | 6.0     | 6.0        | 5.7        | 7.1     | 8.4     | 7.8     | 7.8        | 8.2        | 3.4     | 5.8     | 4.2     | 4.7        | 3.4        |
| 9        | 6.0              | 6.5     | 6.5     | 6.6        | 5.6        | 8.0     | 7.7     | 8.7     | 8.0        | 7.3        | 4.1     | 5.5     | 4.6     | 5.6        | 3.9        |
| 10       | 7.0              | 7.7     | 7.6     | 7.7        | 7.5        | 9.4     | 9.4     | 10.4    | 10.2       | 10.7       | 4.6     | 6.0     | 4.6     | 5.4        | 3.9        |
| 11       | 9.5              | 8.7     | 9.7     | 8.6        | 10.4       | 10.8    | 9.6     | 11.0    | 10.3       | 12.8       | 8.7     | 7.7     | 8.4     | 7.4        | 7.7        |
| 12       | 6.1              | 6.1     | 5.8     | 6.0        | 5.6        | 9.7     | 8.7     | 8.6     | 7.9        | 8.2        | 2.2     | 2.7     | 2.8     | 5.1        | 3.0        |
| 13       | 4.6              | 5.6     | 5.6     | 6.2        | 5.0        | 7.8     | 8.2     | 9.2     | 7.8        | 8.4        | 1.9     | 3.1     | 2.5     | 5.0        | 1.3        |
| 14       | 5.5              | 6.2     | 6.6     | 7.1        | 7.2        | 8.2     | 9.0     | 9.1     | 9.0        | 9.3        | 1.0     | 2.3     | 2.3     | 5.1        | 3.4        |
| 15       | 7.9              | 8.1     | 8.5     | 8.4        | 8.4        | 8.8     | 9.6     | 10.1    | 9.5        | 10.0       | 6.4     | 6.8     | 7.1     | 7.2        | 7.5        |
| 16       | 7.4              | 6.8     | 7.2     | 6.7        | 7.0        | 9.5     | 9.4     | 9.9     | 8.9        | 8.8        | 4.0     | 2.8     | 1.6     | 4.7        | 4.6        |
| 17       | 5.2              | 5.3     | 6.1     | 6.3        | 6.8        | 8.3     | 8.5     | 9.7     | 9.7        | 9.7        | 1.8     | 1.6     | 0.8     | 2.6        | 2.8        |
| 18       | 8.2              | 8.1     | 9.7     | 9.2        | 9.5        | 11.5    | 10.0    | 12.3    | 12.0       | 12.3       | 5.3     | 6.6     | 7.4     | 7.2        | 7.9        |
| 19       | 9.5              | 8.6     | 10.9    | 10.8       | 12.1       | 12.0    | 10.6    | 12.4    | 12.0       | 12.9       | 6.8     | 7.5     | 9.7     | 9.9        | 11.4       |
| 20       | 10.5             | 9.3     | 11.6    | 10.8       | 11.4       | 11.9    | 9.9     | 12.5    | 11.9       | 12.3       | 7.6     | 8.2     | 10.4    | 9.9        | 10.1       |
| 21       | 8.0              | 8.2     | 10.1    | 9.7        | 9.4        | 10.1    | 9.5     | 11.0    | 10.5       | 10.6       | 2.9     | 3.9     | 8.7     | 7.8        | 8.3        |
| 22       | 4.1              | 4.9     | 4.4     | 6.5        | 4.9        | 7.4     | 8.1     | 9.3     | 9.6        | 9.8        | 0.8     | 0.9     | 0.4     | 4.5        | 0.5        |
| 23       | 6.1              | 7.1     | 6.9     | 7.6        | 5.6        | 9.7     | 9.0     | 10.3    | 9.8        | 8.4        | 1.6     | 2.7     | 2.3     | 4.6        | 1.0        |
| 24       | 8.1              | 7.8     | 8.5     | 8.7        | 7.3        | 10.2    | 9.3     | 10.3    | 9.7        | 9.4        | 2.9     | 5.9     | 3.2     | 6.9        | 1.5        |
| 25       | 6.4              | 7.5     | 6.6     | 7.0        | 4.6        | 8.6     | 8.6     | 9.2     | 9.0        | 7.7        | 2.7     | 5.8     | 2.4     | 4.2        | 0.1        |
| 26       | 8.0              | 8.1     | 8.2     | 7.9        | 6.7        | 9.3     | 8.9     | 11.3    | 8.8        | 9.0        | 6.4     | 7.3     | 6.1     | 5.8        | 5.1        |
| 27       | 8.3              | 8.2     | 8.6     | 7.9        | 6.4        | 9.6     | 9.8     | 9.7     | 8.6        | 8.1        | 7.4     | 7.6     | 7.6     | 7.0        | 4.4        |
| 28       | 7.8              | 7.7     | 8.3     | 7.5        | 7.2        | 9.0     | 8.8     | 9.6     | 8.4        | 8.7        | 6.8     | 6.5     | 7.1     | 6.7        | 6.0        |
| 29       | 6.3              | 6.9     | 6.4     | 6.0        | 4.1        | 7.2     | 8.1     | 7.1     | 7.0        | 6.1        | 5.4     | 6.2     | 5.7     | 5.3        | 0.8        |
| 30       | 4.5              | 6.0     | 4.6     | 5.5        | 2.6        | 6.7     | 7.2     | 7.3     | 7.0        | 4.2        | 0.9     | 4.4     | 0.6     | 3.3        | -0.1       |
| 31       | 3.7              | 5.7     | 4.5     | 5.4        | 3.0        | 6.2     | 7.0     | 7.3     | 8.0        | 5.8        | 1.0     | 3.5     | 1.4     | 2.9        | 0.4        |
| dec. I   | 3.2              | 4.2     | 4.3     | 5.1        | 4.3        | 5.2     | 5.8     | 6.6     | 6.8        | 6.4        | 0.8     | 2.4     | 2.0     | 3.3        | 1.9        |
| N        | 1.6              | 3.1     | 2.6     | 3.8        | 2.5        | 4.1     | 5.2     | 5.0     | 5.7        | 4.8        | -1.3    | 0.6     | -0.2    | 1.8        | -0.1       |
| dec. II  | 7.4              | 7.3     | 8.2     | 8.0        | 8.3        | 9.9     | 9.4     | 10.5    | 9.9        | 10.5       | 4.6     | 4.9     | 5.3     | 6.4        | 6.0        |
| N        | 2.0              | 3.2     | 2.8     | 3.7        | 2.5        | 4.4     | 5.2     | 5.2     | 5.5        | 5.1        | -0.5    | 1.0     | 0.1     | 1.8        | -0.3       |
| dec. III | 6.5              | 7.1     | 7.0     | 7.2        | 5.6        | 8.5     | 8.6     | 9.3     | 8.8        | 8.0        | 3.5     | 5.0     | 4.1     | 5.4        | 2.5        |
| N        | 2.2              | 3.2     | 2.9     | 3.8        | 2.8        | 4.6     | 5.2     | 5.5     | 5.7        | 5.2        | -0.5    | 0.8     | 0.2     | 2.0        | 0.2        |
| maand    | 5.7              | 6.2     | 6.5     | 6.8        | 6.1        | 7.9     | 7.9     | 8.8     | 8.5        | 8.3        | 3.0     | 4.1     | 3.8     | 5.0        | 3.4        |
| N        | 2.0              | 3.2     | 2.8     | 3.8        | 2.6        | 4.4     | 5.2     | 5.2     | 5.6        | 5.0        | -0.8    | 0.8     | 0.0     | 1.9        | -0.1       |

## Etmaalgemiddelden en etmaalsommen

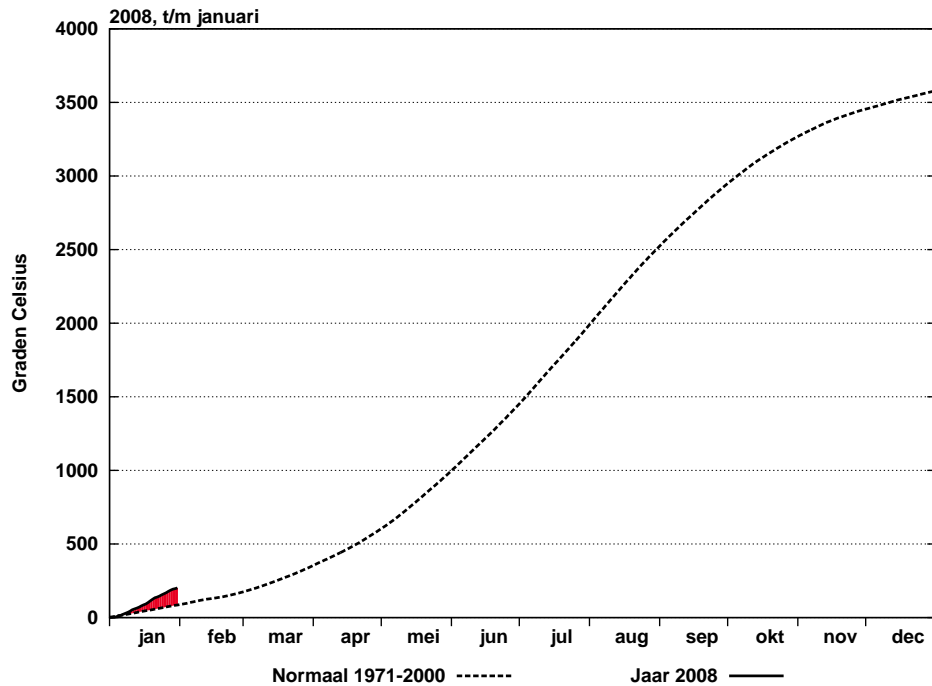
| Datum    | Berekend uit globale straling |         |         |            |            |                             |         |         |            |            |  |         |         |            |            |
|----------|-------------------------------|---------|---------|------------|------------|-----------------------------|---------|---------|------------|------------|--|---------|---------|------------|------------|
|          | Zonneschijn<br>(uren)         |         |         |            |            | Zonneschijn<br>(percentage) |         |         |            |            | Globale straling<br>(J/cm <sup>2</sup> ) |         |         |            |            |
|          | Eelde                         | De Kooy | De Bilt | Vlissingen | Maastricht | Eelde                       | De Kooy | De Bilt | Vlissingen | Maastricht | Eelde                                    | De Kooy | De Bilt | Vlissingen | Maastricht |
| 1        | 2.6                           | .       | 1.2     | .          | 0.2        | 34                          | 0       | 15      | 0          | 2          | 216                                      | 132     | 192     | 107        | 146        |
| 2        | .                             | 3.8     | 6.5     | 6.5        | 7.0        | 0                           | 49      | 83      | 82         | 87         | 79                                       | 258     | 385     | 397        | 651        |
| 3        | 0.2                           | 2.3     | 2.9     | .          | 0.7        | 3                           | 30      | 37      | 0          | 9          | 105                                      | 183     | 221     | 109        | 158        |
| 4        | 0.7                           | 0.6     | .       | 0.9        | .          | 9                           | 8       | 0       | 11         | 0          | 155                                      | 108     | 106     | 142        | 104        |
| 5        | .                             | 2.2     | 1.3     | 2.0        | 0.8        | 0                           | 28      | 16      | 25         | 10         | 105                                      | 202     | 163     | 212        | 182        |
| 6        | 2.5                           | 5.5     | 6.3     | 6.7        | 3.1        | 32                          | 71      | 79      | 83         | 38         | 226                                      | 316     | 385     | 417        | 281        |
| 7        | 2.2                           | 1.6     | 2.5     | 5.7        | 3.9        | 28                          | 20      | 31      | 71         | 48         | 159                                      | 138     | 193     | 378        | 311        |
| 8        | .                             | .       | 0.2     | 1.9        | 1.3        | 0                           | 0       | 3       | 23         | 16         | 90                                       | 149     | 128     | 203        | 226        |
| 9        | 1.7                           | 2.0     | 2.2     | 2.6        | 1.0        | 22                          | 25      | 27      | 32         | 12         | 208                                      | 227     | 243     | 299        | 99         |
| 10       | 0.5                           | 0.5     | 1.7     | 1.0        | 0.2        | 6                           | 6       | 21      | 12         | 2          | 179                                      | 164     | 235     | 234        | 193        |
| 11       | 0.4                           | .       | 0.2     | .          | 1.3        | 5                           | 0       | 2       | 0          | 16         | 111                                      | 82      | 113     | 121        | 222        |
| 12       | 1.3                           | 3.3     | 2.9     | 4.9        | 1.1        | 16                          | 41      | 36      | 60         | 13         | 127                                      | 292     | 250     | 392        | 136        |
| 13       | 0.9                           | 0.7     | 0.5     | 0.6        | 7.2        | 11                          | 9       | 6       | 7          | 86         | 161                                      | 176     | 197     | 190        | 485        |
| 14       | 3.2                           | .       | 1.5     | 3.4        | 3.8        | 40                          | 0       | 18      | 41         | 45         | 265                                      | 164     | 249     | 307        | 372        |
| 15       | .                             | .       | .       | .          | .          | 0                           | 0       | 0       | 0          | 0          | 72                                       | 48      | 59      | 65         | 176        |
| 16       | 3.9                           | 5.2     | 3.0     | 3.8        | 0.3        | 48                          | 64      | 36      | 45         | 4          | 332                                      | 433     | 291     | 353        | 179        |
| 17       | .                             | .       | .       | .          | 1.1        | 0                           | 0       | 0       | 0          | 13         | 102                                      | 96      | 105     | 145        | 203        |
| 18       | .                             | .       | .       | .          | .          | 0                           | 0       | 0       | 0          | 0          | 160                                      | 110     | 103     | 88         | 131        |
| 19       | .                             | 0.2     | .       | .          | .          | 0                           | 2       | 0       | 0          | 0          | 62                                       | 91      | 43      | 95         | 46         |
| 20       | .                             | .       | .       | 1.0        | .          | 0                           | 0       | 0       | 12         | 0          | 32                                       | 134     | 53      | 245        | 72         |
| 21       | .                             | .       | .       | .          | .          | 0                           | 0       | 0       | 0          | 0          | 31                                       | 43      | 94      | 135        | 87         |
| 22       | 6.1                           | 6.3     | 6.3     | 5.9        | 5.2        | 73                          | 75      | 74      | 68         | 60         | 444                                      | 496     | 471     | 458        | 482        |
| 23       | .                             | 0.5     | .       | 0.1        | 0.7        | 0                           | 6       | 0       | 1          | 8          | 52                                       | 118     | 74      | 152        | 159        |
| 24       | .                             | 0.5     | .       | .          | .          | 0                           | 6       | 0       | 0          | 0          | 51                                       | 127     | 72      | 72         | 101        |
| 25       | 1.5                           | 2.3     | 2.0     | 5.7        | 6.7        | 18                          | 27      | 23      | 65         | 76         | 215                                      | 310     | 283     | 448        | 514        |
| 26       | 1.2                           | 1.7     | 4.2     | 6.1        | 5.3        | 14                          | 20      | 48      | 69         | 60         | 258                                      | 292     | 461     | 536        | 507        |
| 27       | .                             | 2.2     | 2.3     | 5.4        | .          | 0                           | 25      | 26      | 61         | 0          | 153                                      | 374     | 311     | 407        | 89         |
| 28       | .                             | 1.5     | .       | .          | 0.2        | 0                           | 17      | 0       | 0          | 2          | 128                                      | 227     | 197     | 153        | 192        |
| 29       | .                             | 1.5     | .       | .          | .          | 0                           | 17      | 0       | 0          | 0          | 130                                      | 310     | 125     | 156        | 127        |
| 30       | 1.4                           | 3.2     | 2.2     | 2.3        | .          | 16                          | 36      | 25      | 25         | 0          | 229                                      | 333     | 246     | 290        | 81         |
| 31       | .                             | .       | 0.2     | 0.4        | 0.7        | 0                           | 0       | 2       | 4          | 8          | 123                                      | 91      | 175     | 179        | 305        |
| dec. I   | 10.4                          | 18.5    | 24.8    | 27.3       | 18.2       | 13                          | 24      | 31      | 34         | 22         | 1522                                     | 1877    | 2251    | 2498       | 2351       |
| N        | 12.1                          | 13.7    | 13.2    | 13.1       | 12.6       | 16                          | 18      | 17      | 16         | 16         | 1660                                     | 1747    | 1753    | 1945       | 2045       |
| dec. II  | 9.7                           | 9.4     | 8.1     | 13.7       | 14.8       | 12                          | 12      | 10      | 16         | 18         | 1424                                     | 1626    | 1463    | 2001       | 2022       |
| N        | 16.5                          | 18.2    | 18.8    | 19.5       | 19.5       | 20                          | 22      | 23      | 23         | 23         | 2089                                     | 2269    | 2274    | 2557       | 2613       |
| dec. III | 10.2                          | 19.7    | 17.2    | 25.9       | 18.8       | 11                          | 21      | 18      | 27         | 19         | 1814                                     | 2721    | 2509    | 2986       | 2644       |
| N        | 18.0                          | 21.3    | 20.4    | 22.9       | 18.4       | 19                          | 22      | 21      | 24         | 19         | 2755                                     | 2988    | 2910    | 3358       | 3161       |
| maand    | 30.3                          | 47.6    | 50.1    | 66.9       | 51.8       | 12                          | 19      | 19      | 26         | 20         | 4760                                     | 6224    | 6223    | 7485       | 7017       |
| N        | 46.7                          | 53.1    | 52.4    | 55.5       | 50.6       | 18                          | 21      | 20      | 21         | 19         | 6505                                     | 7004    | 6938    | 7860       | 7820       |

## Etmaalgemiddelden en etmaalsommen

| Datum    | Gemiddelde luchtdruk op zeeniveau<br>(hPa) |         |         |            |            | Gemiddelde windsnelheid<br>(m/s) |         |         |            |            | Relatieve vochtigheid<br>(percentage) |         |         |            |            |
|----------|--|---------|---------|------------|------------|----------------------------------|---------|---------|------------|------------|---------------------------------------|---------|---------|------------|------------|
|          | Eelde                                      | De Kooy | De Bilt | Vlissingen | Maastricht | Eelde                            | De Kooy | De Bilt | Vlissingen | Maastricht | Eelde                                 | De Kooy | De Bilt | Vlissingen | Maastricht |
| 1        | 1027.4                                     | 1026.5  | 1026.0  | 1024.6     | 1025.1     | 1.8                              | 4.0     | 3.2     | 4.7        | 3.2        | 94                                    | 97      | 96      | 96         | 99         |
| 2        | 1023.2                                     | 1021.9  | 1020.4  | 1017.9     | 1018.5     | 4.0                              | 6.4     | 4.8     | 8.5        | 5.4        | 89                                    | 86      | 85      | 85         | 84         |
| 3        | 1011.9                                     | 1009.6  | 1007.9  | 1005.1     | 1006.2     | 7.2                              | 8.8     | 6.0     | 8.6        | 5.9        | 79                                    | 79      | 73      | 85         | 79         |
| 4        | 1009.6                                     | 1006.4  | 1007.0  | 1004.7     | 1007.9     | 6.0                              | 6.7     | 5.5     | 8.1        | 4.3        | 78                                    | 83      | 76      | 88         | 78         |
| 5        | 1000.2                                     | 998.3   | 1000.4  | 1000.3     | 1003.2     | 6.1                              | 8.0     | 5.5     | 9.5        | 7.3        | 92                                    | 92      | 89      | 91         | 89         |
| 6        | 1008.1                                     | 1007.8  | 1009.4  | 1009.8     | 1011.4     | 4.5                              | 5.4     | 3.3     | 6.5        | 4.8        | 94                                    | 89      | 93      | 91         | 89         |
| 7        | 1005.1                                     | 1004.9  | 1007.9  | 1009.5     | 1011.9     | 8.1                              | 10.8    | 6.8     | 13.0       | 8.4        | 88                                    | 83      | 81      | 81         | 81         |
| 8        | 1014.5                                     | 1013.5  | 1015.9  | 1015.9     | 1018.8     | 6.5                              | 8.8     | 5.2     | 9.5        | 6.3        | 89                                    | 87      | 87      | 91         | 88         |
| 9        | 1008.9                                     | 1008.1  | 1010.5  | 1011.1     | 1013.8     | 7.1                              | 8.9     | 5.9     | 9.6        | 6.8        | 86                                    | 84      | 84      | 86         | 88         |
| 10       | 1006.3                                     | 1004.5  | 1007.7  | 1007.3     | 1011.6     | 8.2                              | 13.1    | 6.5     | 11.8       | 9.2        | 85                                    | 84      | 83      | 85         | 83         |
| 11       | 998.4                                      | 996.7   | 998.2   | 996.8      | 1000.5     | 5.9                              | 7.1     | 5.4     | 10.5       | 7.5        | 91                                    | 92      | 88      | 88         | 76         |
| 12       | 1002.6                                     | 1002.8  | 1004.6  | 1005.8     | 1007.3     | 6.2                              | 6.9     | 4.9     | 8.3        | 7.5        | 87                                    | 87      | 85      | 87         | 81         |
| 13       | 1011.9                                     | 1009.7  | 1011.4  | 1010.0     | 1013.4     | 5.3                              | 7.2     | 5.0     | 9.3        | 5.8        | 86                                    | 89      | 84      | 87         | 71         |
| 14       | 1002.5                                     | 1000.3  | 1002.7  | 1001.9     | 1005.8     | 6.6                              | 10.1    | 6.3     | 11.3       | 8.3        | 82                                    | 83      | 81      | 84         | 76         |
| 15       | 992.1                                      | 988.8   | 992.3   | 990.8      | 996.7      | 9.3                              | 13.4    | 8.5     | 15.9       | 11.8       | 88                                    | 89      | 85      | 86         | 79         |
| 16       | 992.9                                      | 992.4   | 994.6   | 994.9      | 996.9      | 7.8                              | 8.8     | 5.6     | 7.8        | 5.6        | 83                                    | 88      | 83      | 88         | 89         |
| 17       | 1002.8                                     | 1001.3  | 1003.3  | 1003.5     | 1006.1     | 5.4                              | 7.1     | 5.2     | 9.8        | 6.7        | 96                                    | 95      | 92      | 94         | 90         |
| 18       | 1006.4                                     | 1006.6  | 1009.5  | 1011.0     | 1013.5     | 7.9                              | 9.8     | 6.9     | 13.0       | 8.7        | 93                                    | 92      | 88      | 90         | 87         |
| 19       | 1014.6                                     | 1015.4  | 1017.0  | 1018.3     | 1020.4     | 6.3                              | 7.5     | 5.3     | 16.7       | 9.1        | 95                                    | 96      | 96      | 93         | 92         |
| 20       | 1014.6                                     | 1015.4  | 1018.0  | 1020.1     | 1022.2     | 7.0                              | 9.8     | 7.4     | 14.6       | 9.0        | 96                                    | 95      | 91      | 90         | 87         |
| 21       | 1006.2                                     | 1006.8  | 1009.2  | 1011.1     | 1013.5     | 6.6                              | 9.4     | 7.8     | 15.1       | 9.6        | 96                                    | 95      | 90      | 88         | 85         |
| 22       | 1019.8                                     | 1021.3  | 1021.5  | 1022.9     | 1021.9     | 4.0                              | 4.4     | 3.4     | 5.4        | 3.9        | 84                                    | 81      | 83      | 78         | 81         |
| 23       | 1024.1                                     | 1023.6  | 1026.1  | 1026.6     | 1029.2     | 6.7                              | 9.6     | 5.2     | 8.8        | 7.2        | 95                                    | 94      | 89      | 89         | 82         |
| 24       | 1023.6                                     | 1024.5  | 1026.5  | 1028.0     | 1028.9     | 7.0                              | 9.3     | 5.0     | 8.0        | 5.8        | 86                                    | 83      | 83      | 81         | 86         |
| 25       | 1030.3                                     | 1031.2  | 1034.1  | 1036.1     | 1037.8     | 8.5                              | 10.6    | 5.9     | 10.7       | 6.5        | 85                                    | 83      | 82      | 83         | 83         |
| 26       | 1026.8                                     | 1028.5  | 1030.9  | 1033.3     | 1034.4     | 8.5                              | 9.8     | 6.0     | 10.9       | 7.5        | 87                                    | 85      | 83      | 90         | 81         |
| 27       | 1026.6                                     | 1028.6  | 1030.1  | 1032.2     | 1032.5     | 6.5                              | 7.8     | 4.5     | 8.3        | 5.0        | 90                                    | 88      | 84      | 91         | 88         |
| 28       | 1031.6                                     | 1032.1  | 1032.8  | 1033.6     | 1034.0     | 3.5                              | 4.3     | 2.4     | 4.0        | 2.3        | 90                                    | 86      | 84      | 90         | 81         |
| 29       | 1026.3                                     | 1026.0  | 1027.4  | 1027.9     | 1028.7     | 4.6                              | 7.0     | 3.8     | 5.9        | 2.5        | 87                                    | 86      | 83      | 88         | 82         |
| 30       | 1021.1                                     | 1022.2  | 1023.3  | 1024.9     | 1024.9     | 4.6                              | 6.1     | 3.2     | 5.8        | 3.5        | 89                                    | 81      | 88      | 84         | 97         |
| 31       | 1004.8                                     | 1003.3  | 1007.6  | 1008.4     | 1013.2     | 9.8                              | 13.5    | 7.9     | 13.8       | 11.0       | 88                                    | 81      | 84      | 85         | 88         |
| dec. I   | 1011.5                                     | 1010.2  | 1011.3  | 1010.6     | 1012.8     | 6.0                              | 8.1     | 5.3     | 9.0        | 6.2        | 87                                    | 86      | 85      | 88         | 86         |
| N        | 1015.1                                     | 1014.8  | 1016.0  | 1016.3     | 1017.6     | 5.4                              | 7.2     | 4.1     | 7.6        | 5.5        | 92                                    | 89      | 89      | 88         | 89         |
| dec. II  | 1003.9                                     | 1002.9  | 1005.2  | 1005.3     | 1008.3     | 6.8                              | 8.8     | 6.1     | 11.7       | 8.0        | 90                                    | 91      | 87      | 89         | 83         |
| N        | 1016.2                                     | 1015.9  | 1017.0  | 1017.3     | 1018.4     | 5.5                              | 7.2     | 4.1     | 7.5        | 5.2        | 91                                    | 88      | 87      | 86         | 87         |
| dec. III | 1021.9                                     | 1022.6  | 1024.5  | 1025.9     | 1027.2     | 6.4                              | 8.3     | 5.0     | 8.8        | 5.9        | 89                                    | 86      | 85      | 86         | 85         |
| N        | 1014.2                                     | 1013.8  | 1014.9  | 1015.1     | 1016.3     | 5.4                              | 7.0     | 4.1     | 7.5        | 5.5        | 91                                    | 89      | 88      | 87         | 88         |
| maand    | 1012.7                                     | 1012.2  | 1014.0  | 1014.3     | 1016.5     | 6.4                              | 8.4     | 5.4     | 9.8        | 6.7        | 89                                    | 88      | 86      | 88         | 85         |
| N        | 1015.1                                     | 1014.8  | 1016.0  | 1016.2     | 1017.4     | 5.5                              | 7.1     | 4.1     | 7.5        | 5.3        | 91                                    | 88      | 88      | 87         | 88         |

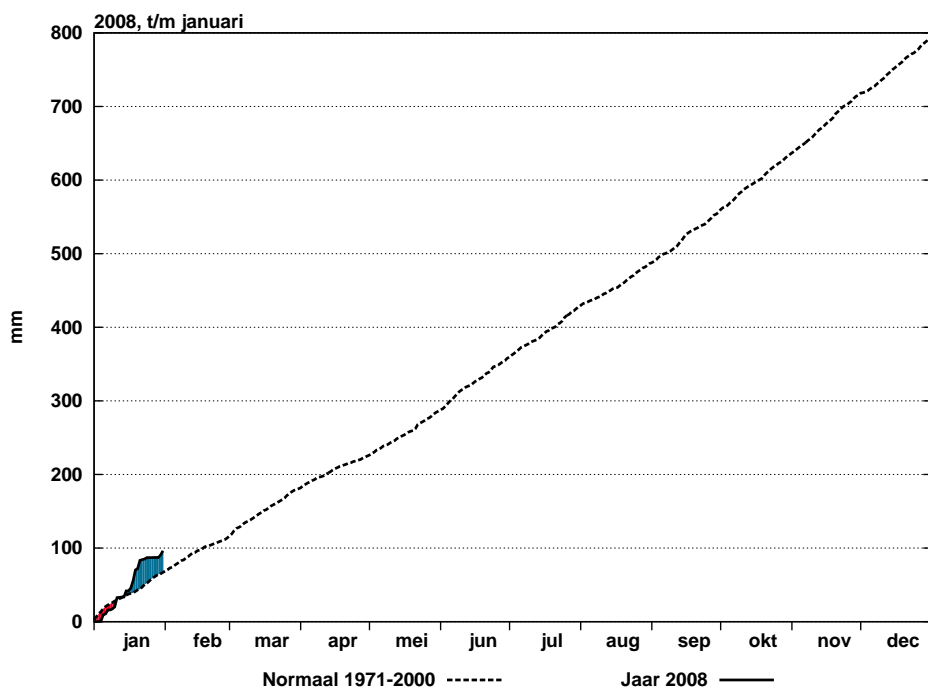
Etmaalgemiddelden en etmaalsommen

| Datum    | Hoeveelheid neerslag (mm) |         |         |           |            | Duur neerslag (uren) |         |         |           |            | Referentiegwasverdamping (mm) |         |         |           |            |
|----------|---------------------------|---------|---------|-----------|------------|----------------------|---------|---------|-----------|------------|-------------------------------|---------|---------|-----------|------------|
|          | Eelde                     | De Kooy | De Bilt | Vissingen | Maastricht | Eelde                | De Kooy | De Bilt | Vissingen | Maastricht | Eelde                         | De Kooy | De Bilt | Vissingen | Maastricht |
| 1        | .                         | .       | .       | .         | 1.3        | .                    | .       | .       | .         | 1.0        | 0.2                           | 0.1     | 0.2     | 0.1       | 0.2        |
| 2        | 0.0                       | 0.0     | .       | .         | .          | .                    | .       | .       | .         | .          | 0.1                           | 0.3     | 0.4     | 0.4       | 0.6        |
| 3        | 0.0                       | 0.0     | 0.1     | 0.8       | 1.8        | .                    | .       | 0.3     | 3.8       | 4.7        | 0.1                           | 0.2     | 0.2     | 0.1       | 0.2        |
| 4        | 0.3                       | 0.3     | 0.4     | 1.3       | 0.0        | 0.5                  | 0.9     | 1.0     | 1.7       | .          | 0.2                           | 0.1     | 0.1     | 0.2       | 0.1        |
| 5        | 3.6                       | 6.9     | 8.7     | 3.6       | 8.3        | 7.0                  | 5.5     | 7.1     | 5.4       | 8.8        | 0.1                           | 0.3     | 0.2     | 0.3       | 0.2        |
| 6        | 0.1                       | 0.8     | 1.4     | 0.1       | 0.0        | 0.5                  | 0.4     | 1.0     | 0.3       | .          | 0.3                           | 0.4     | 0.5     | 0.5       | 0.4        |
| 7        | 3.1                       | 3.4     | 5.4     | 0.5       | 4.8        | 3.8                  | 3.1     | 4.5     | 0.9       | 4.7        | 0.2                           | 0.2     | 0.3     | 0.5       | 0.4        |
| 8        | 0.0                       | 0.0     | .       | .         | 0.0        | .                    | .       | .       | .         | .          | 0.1                           | 0.2     | 0.2     | 0.3       | 0.3        |
| 9        | 0.6                       | 1.0     | 1.2     | 0.2       | 6.4        | 1.7                  | 1.4     | 1.7     | 0.6       | 4.9        | 0.3                           | 0.3     | 0.3     | 0.4       | 0.1        |
| 10       | 1.2                       | 0.3     | 2.8     | 2.5       | 0.0        | 4.3                  | 1.1     | 4.0     | 3.8       | .          | 0.2                           | 0.2     | 0.3     | 0.3       | 0.3        |
| 11       | 11.1                      | 7.6     | 12.6    | 4.3       | 5.3        | 13.3                 | 11.1    | 11.8    | 9.5       | 1.5        | 0.2                           | 0.1     | 0.2     | 0.2       | 0.3        |
| 12       | 0.2                       | 0.0     | 0.5     | 1.2       | 0.1        | 0.4                  | .       | 1.0     | 1.2       | 0.6        | 0.2                           | 0.4     | 0.3     | 0.5       | 0.2        |
| 13       | .                         | 0.2     | 0.3     | 0.2       | .          | .                    | 0.3     | 1.1     | 0.6       | .          | 0.2                           | 0.2     | 0.3     | 0.2       | 0.6        |
| 14       | 0.1                       | 0.7     | 0.1     | 1.0       | 0.0        | 0.1                  | 1.0     | 0.3     | 1.6       | .          | 0.3                           | 0.2     | 0.3     | 0.4       | 0.5        |
| 15       | 7.4                       | 15.3    | 8.2     | 4.2       | 0.8        | 11.1                 | 13.2    | 8.7     | 7.8       | 2.4        | 0.1                           | 0.1     | 0.1     | 0.1       | 0.2        |
| 16       | 0.4                       | 0.0     | 0.0     | .         | 4.5        | 0.5                  | .       | .       | .         | 5.7        | 0.5                           | 0.6     | 0.4     | 0.5       | 0.2        |
| 17       | 7.2                       | 5.6     | 3.9     | 2.1       | 3.0        | 4.8                  | 3.1     | 2.4     | 1.8       | 1.9        | 0.1                           | 0.1     | 0.1     | 0.2       | 0.3        |
| 18       | 8.0                       | 1.1     | 10.0    | 3.4       | 2.5        | 7.7                  | 2.3     | 8.1     | 4.9       | 3.2        | 0.2                           | 0.2     | 0.1     | 0.1       | 0.2        |
| 19       | 6.6                       | 6.3     | 14.7    | 1.3       | 8.5        | 9.2                  | 10.0    | 15.7    | 2.8       | 9.2        | 0.1                           | 0.1     | 0.1     | 0.1       | 0.1        |
| 20       | 15.4                      | 4.3     | 1.7     | 0.2       | 0.3        | 13.5                 | 7.4     | 5.8     | 0.6       | 2.0        | 0.0                           | 0.2     | 0.1     | 0.4       | 0.1        |
| 21       | 36.7                      | 25.7    | 11.3    | 3.2       | 3.9        | 18.1                 | 14.6    | 11.6    | 3.3       | 5.2        | 0.0                           | 0.1     | 0.1     | 0.2       | 0.1        |
| 22       | 0.1                       | 0.1     | 0.9     | 0.3       | 0.8        | 0.1                  | 0.2     | 1.7     | 0.4       | 0.9        | 0.5                           | 0.6     | 0.6     | 0.6       | 0.6        |
| 23       | 0.5                       | 0.3     | 0.9     | 0.1       | 0.1        | 2.8                  | 0.9     | 2.4     | 0.3       | 0.3        | 0.1                           | 0.2     | 0.1     | 0.2       | 0.2        |
| 24       | 1.5                       | 0.4     | 2.0     | 0.6       | 2.6        | 3.0                  | 0.9     | 3.5     | 1.7       | 2.8        | 0.1                           | 0.2     | 0.1     | 0.1       | 0.1        |
| 25       | .                         | .       | .       | .         | .          | .                    | .       | .       | .         | .          | 0.3                           | 0.4     | 0.4     | 0.6       | 0.6        |
| 26       | 7.3                       | 0.1     | .       | .         | .          | 4.6                  | 0.4     | .       | .         | .          | 0.4                           | 0.4     | 0.6     | 0.7       | 0.7        |
| 27       | 5.5                       | 1.4     | 0.1     | .         | .          | 7.6                  | 1.9     | 0.2     | .         | .          | 0.2                           | 0.5     | 0.4     | 0.6       | 0.1        |
| 28       | .                         | .       | .       | .         | .          | .                    | .       | .       | .         | .          | 0.2                           | 0.3     | 0.3     | 0.2       | 0.3        |
| 29       | .                         | .       | .       | .         | .          | .                    | .       | .       | .         | .          | 0.2                           | 0.4     | 0.2     | 0.2       | 0.2        |
| 30       | 2.3                       | 3.1     | 3.6     | 1.8       | 6.3        | 3.2                  | 4.3     | 6.0     | 4.8       | 7.6        | 0.3                           | 0.4     | 0.3     | 0.4       | 0.1        |
| 31       | 6.6                       | 6.0     | 5.5     | 3.6       | 2.3        | 4.2                  | 3.5     | 3.3     | 3.0       | 2.7        | 0.1                           | 0.1     | 0.2     | 0.2       | 0.4        |
| dec. I   | 8.9                       | 12.7    | 20.0    | 9.0       | 22.6       | 17.8                 | 12.4    | 19.6    | 16.5      | 24.1       | 1.8                           | 2.3     | 2.7     | 3.1       | 2.8        |
| N        | 28.2                      | 26.1    | 28.0    | 24.2      | 21.7       | 26.9                 | 25.3    | 27.1    | 23.6      | 26.4       | 1.8                           | 2.0     | 2.0     | 2.3       | 2.3        |
| dec. II  | 56.4                      | 41.1    | 52.0    | 17.9      | 25.0       | 60.6                 | 48.4    | 54.9    | 30.8      | 26.5       | 1.9                           | 2.2     | 2.0     | 2.7       | 2.7        |
| N        | 15.1                      | 14.8    | 15.1    | 12.5      | 15.5       | 16.3                 | 16.3    | 16.6    | 15.2      | 17.6       | 2.3                           | 2.6     | 2.6     | 3.1       | 3.0        |
| dec. III | 60.5                      | 37.1    | 24.3    | 9.6       | 16.0       | 43.6                 | 26.7    | 28.7    | 13.5      | 19.5       | 2.4                           | 3.6     | 3.3     | 4.0       | 3.4        |
| N        | 25.7                      | 23.5    | 23.9    | 22.0      | 23.2       | 25.5                 | 23.4    | 24.3    | 23.4      | 24.5       | 3.0                           | 3.5     | 3.3     | 4.0       | 3.5        |
| maand    | 125.8                     | 90.9    | 96.3    | 36.5      | 63.6       | 122.0                | 87.5    | 103.2   | 60.8      | 70.1       | 6.1                           | 8.1     | 8.0     | 9.8       | 8.9        |
| N        | 69.0                      | 64.4    | 67.0    | 58.7      | 60.5       | 68.8                 | 65.1    | 68.0    | 62.1      | 68.6       | 7.2                           | 8.2     | 7.9     | 9.5       | 8.8        |



Figuur 7: Geaccumuleerde temperatuur, De Bilt, 2008

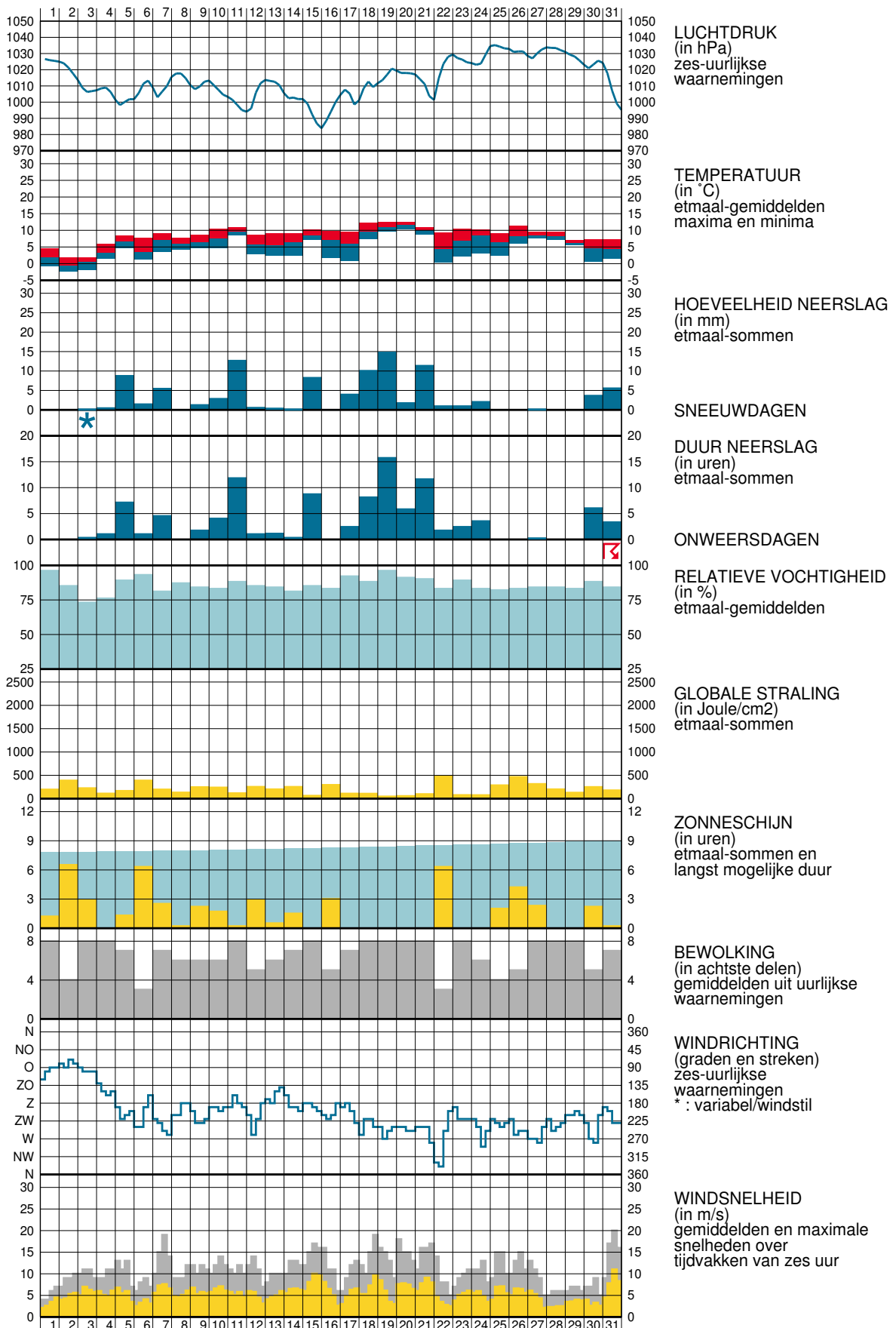
De getrokken lijn geeft de etmaalgemiddelde temperatuur van het actuele jaar, cumulatief weer. De stippellijn laat het langjarig gemiddelde (1971-2000) van de cumulatieve jaartemperatuur zien. Indien de actuele lijn zich onder die van het langjarig gemiddelde bevindt, is het jaar tot dan toe koud verlopen (blauw gearceerd). Als de actuele lijn zich erboven bevindt, verloopt het jaar tot dan toe warmer dan normaal (rood gearceerd).



Figuur 8: Geaccumuleerde neerslagsom, De Bilt, 2008

De getrokken lijn geeft de cumulatief gevallen hoeveelheid neerslag weer in het actuele jaar. De stippellijn laat het langjarig gemiddelde tijdvak 1971-2000 van de cumulatieve neerslag dagsommen zien. Indien de actuele lijn zich onder die van het langjarig gemiddelde bevindt, is het jaar tot dan toe droog verlopen (in rood aangegeven). Als de actuele lijn zich erboven bevindt, verloopt het jaar nat (blauw).

WAARNEMINGEN TE DE BILT







### Verklaring

In het Maandoverzicht van het Weer in Nederland (MOW) zijn gegevens opgenomen van de meteorologische stations. De ligging van de stations is aangegeven in de bovenstaande kaart. Het MOW is 106 jaar lang uitgegeven als KNMI-periodiek en wordt sinds 2010 verspreid via internet (<http://www.knmi.nl/nederland-nu/klimatologie/gegevens/mow>). Een uitgebreide toelichting op het MOW is eveneens via internet beschikbaar. ([http://cdn.knmi.nl/system/downloads/files/000/000/007/original/het\\_weer\\_in\\_nederland.pdf?1433758571](http://cdn.knmi.nl/system/downloads/files/000/000/007/original/het_weer_in_nederland.pdf?1433758571))

De tijden in het MOW zijn uitgedrukt in universal time (UT). Hierin komt 12 uur overeen met 13 uur Midden Europese Tijd (MET) en met 14 uur Midden Europese zomertijd. Alle gegevens hebben betrekking op het etmaal 00-24 uur UT. De vermelde normalen zijn berekend uit de metingen in het tijdvak 1971-2000. Normalen van het “aantal dagen met” zijn berekend uit uurlijkse waarnemingen. Hierbij geldt dat het betreffende verschijnsel in tenminste één uurvak werd waargenomen. De globale straling is de som van de directe en diffuse zonnestraling op een horizontaal vlak en wordt weergegeven in  $\text{Joule}/\text{cm}^2$  ( $1 \text{ Joule}/\text{cm}^2 = 2,7772 \times 10^{-3} \text{ KWh}/\text{m}^2$ ).

De referentiegewas-verdamping  $E_r$  is een richtgetal voor de bepaling van de potentiële verdamping van gewassen.  $E_r$  wordt bepaald uit gegevens van globale straling en luchttemperatuur (berekenningswijze volgens Makkink). De aanduidingen I, II en III hebben betrekking op de decaden, waarbij I = dag 1 t/m 10, II = dag 11 t/m 20 en III = dag 21 t/m de laatste dag van de maand. M = de gehele maand.

|       |                     |      |                         |
|-------|---------------------|------|-------------------------|
| blank | : gegeven ontbreekt | A    | : aantal                |
| .     | : waarde nul        | STIL | : windstil/veranderlijk |
| 0     | : minder dan 0.5    | N    | : normaal 1971-2000     |
| 0.0   | : minder dan 0.05   |      |                         |

Het MOW is een uitgave van het Koninklijk Nederlands Meteorologisch Instituut  
Postbus 201 3730 AE De Bilt  
<http://www.knmi.nl/nederland-nu/klimatologie>      [klimaatdesk@knmi.nl](mailto:klimaatdesk@knmi.nl)