



Koninklijk Nederlands
Meteorologisch Instituut
Ministerie van Infrastructuur en Milieu

Maandoverzicht van het weer in Nederland

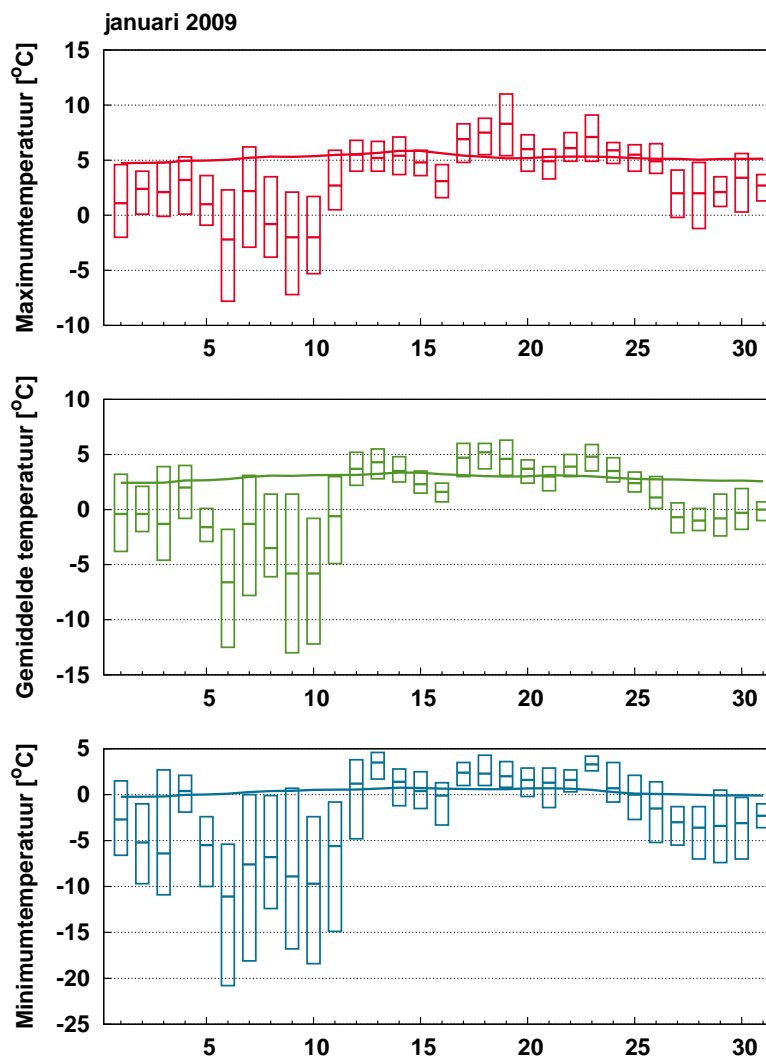
januari 2009



Januari 2009: Koud, zeer zonnig en gemiddeld over het land droog

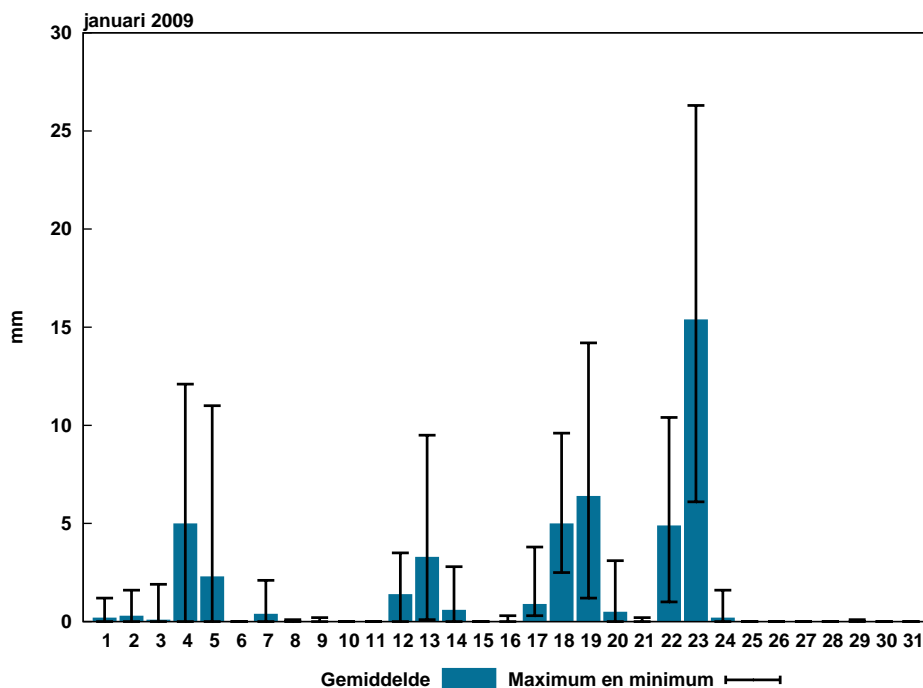
Voor een uitgebreide beschrijving van het weer in januari 2009 zie:

<http://www.knmi.nl/nederland-nu/klimatologie/maand-en-seizoensoverzichten/2009/januari>



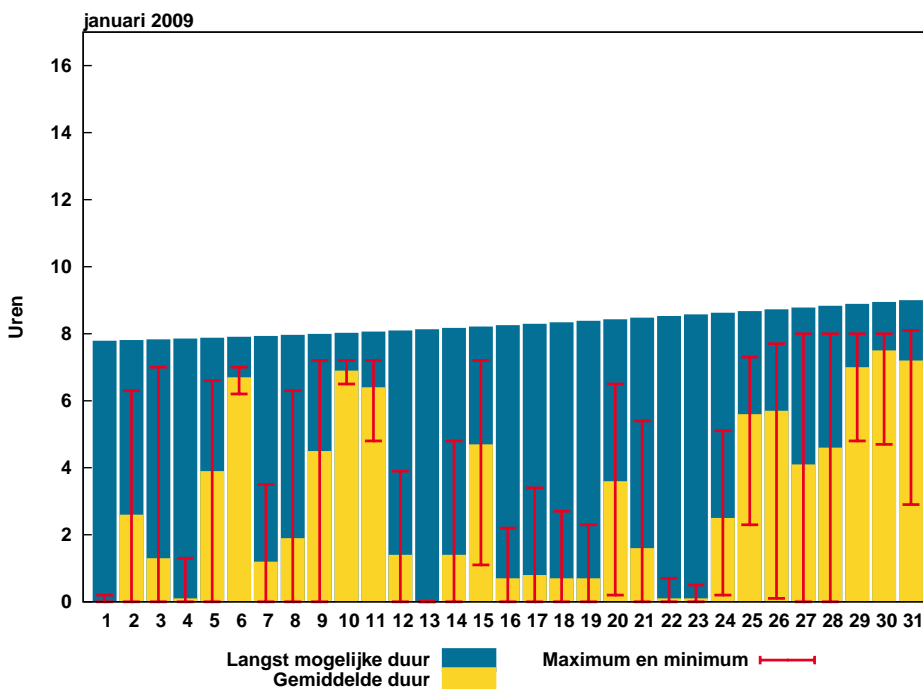
Figuur 1: Temperatuurverloop

De balkjes geven voor ieder element per etmaal de hoogste en laagste waarde aan zoals die gemeten is op één van de KNMI-stations. De rode (maximum), groene (gemiddelde) en blauwe (minimum) lijn geven het vijf-daags voortschrijdend gemiddelde aan over alle KNMI-stations, gemiddeld over het tijdvak 1971-2000.



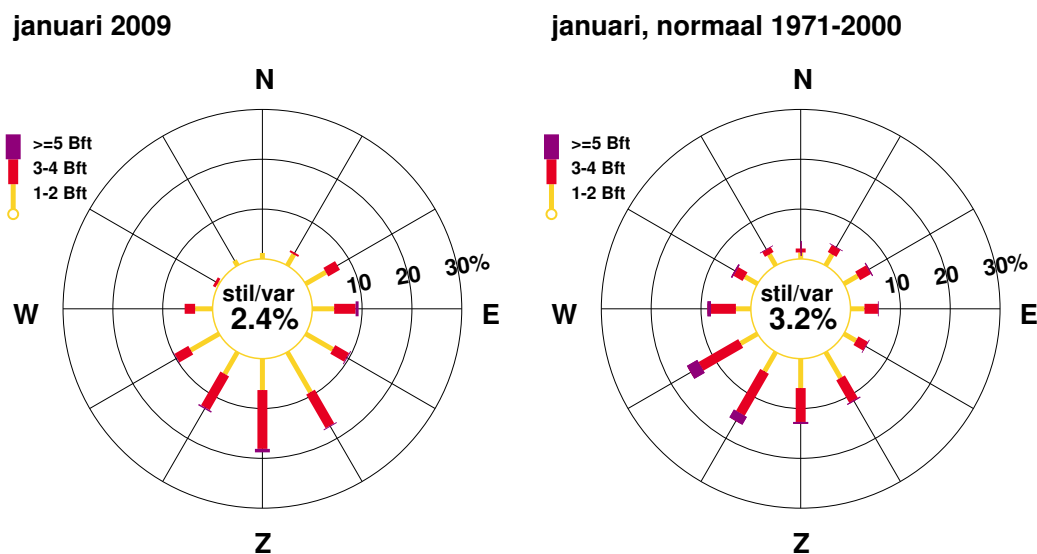
Figuur 2: Etmaalsom neerslag

De blauwe balkjes tonen de gemeten etmaalsommen neerslag, gemiddeld over alle KNMI-stations. De zwarte lijnen geven de laagste en hoogste etmaalsom, gemeten op één van de stations.



Figuur 3: Etmaalsom zonnenschijnduur

De gele balkjes tonen de etmaalsommen zonnenschijnduur, gemiddeld over alle KNMI-stations. De rode lijnen geven de laagste en hoogste etmaalsom, gemeten op één van de stations. De blauwe balkjes geven de theoretisch langst mogelijke zonnenschijnduur.



Figuur 4: Windroses

In de windroses zijn de windrichtingen in klassen van 30° verdeeld. Voor iedere klasse is in drie Beaufortklassen aangegeven in hoeveel procent van de gevallen deze voorkwam (relatieve frequentie). De windroses heeft betrekking op het KNMI-station De Bilt.

| Extremen | | | |
|-----------------------------|-------|-----|-------------------------|
| Hoogste temperatuur: | 11.0 | °C | te Ell op 19 januari |
| Laagste temperatuur: | -20.8 | °C | te Ell op 6 januari |
| Grootste aantal zonuren: | 119.3 | uur | te Maastricht |
| Kleinste aantal zonuren: | 65 | uur | te Nieuw Beerta |
| Grootste maandsom neerslag: | 64.2 | mm | te Wijk aan Zee |
| Kleinste maandsom neerslag: | 26.9 | mm | te Nieuw Beerta |
| Grootste dagsom neerslag: | 26.3 | mm | te Deelen op 23 januari |

Landgemiddelden

| Decade | Temperatuur (°C) | | | | | | Zonneschijn (uren) (percentage) | | | |
|--------|------------------|-----|--------------|-----|--------------|-----|---------------------------------|------|------|----|
| | Gem. | N | Gem. dagmax. | N | Gem. dagmin. | N | Gem. | N | Gem. | N |
| I | -2.1 | 2.7 | 0.8 | 5.0 | -5.6 | 0.2 | 28.8 | 12.9 | 36 | 17 |
| II | 3.4 | 2.8 | 5.7 | 5.1 | 1.1 | 0.4 | 21.4 | 18.5 | 26 | 22 |
| III | 1.6 | 3.0 | 4.2 | 5.2 | -0.7 | 0.5 | 44.9 | 20.2 | 46 | 21 |
| Maand | 1.0 | 2.9 | 3.5 | 5.1 | -1.7 | 0.4 | 95.1 | 51.7 | 37 | 20 |

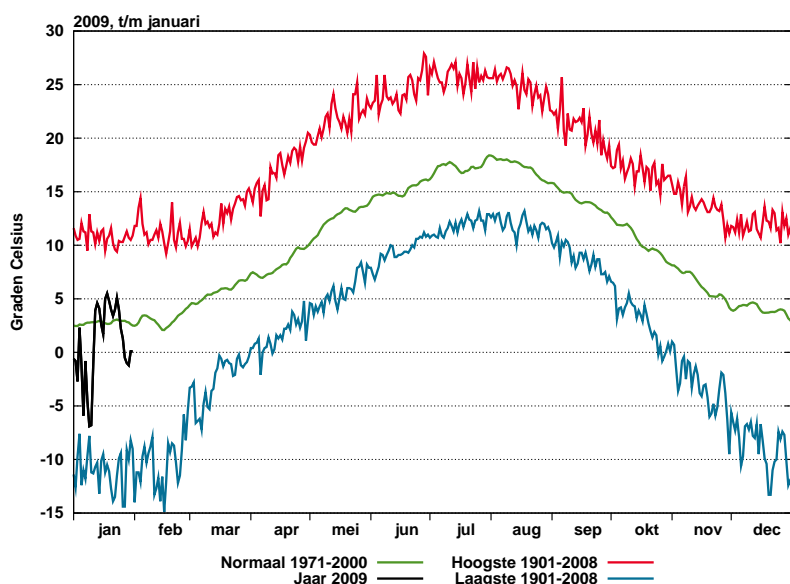
| Decade | Luchtdruk zeeniveau (hPa) | | Neerslag (mm) | | Windsnelheid (m/s) | | Globale straling (J/cm2) | |
|--------|---------------------------|--------|---------------|------|--------------------|-----|--------------------------|------|
| | Gem. | N | Gem. | N | Gem. | N | Gem. | N |
| I | 1026.5 | 1016.0 | 8.4 | 26.8 | 3.3 | 6.0 | 2562 | 1830 |
| II | 1010.0 | 1017.0 | 18.2 | 20.8 | 6.4 | 5.9 | 2206 | 2360 |
| III | 1005.2 | 1014.9 | 20.5 | 25.2 | 5.0 | 5.9 | 4203 | 3034 |
| Maand | 1013.6 | 1015.9 | 47.1 | 72.8 | 4.9 | 5.9 | 8970 | 7225 |

Maandgemiddelden en maandsommen, temperatuur en neerslag

| Station | Temperatuur (°C) | | | | | | | | Neerslag (mm) | | | | | |
|------------------|-------------------|-----|------|-----|-------------------|-------|------|------|---------------|----|-------------|-------|---------|-------|
| | Dagelijks maximum | | | | Dagelijks minimum | | | | Som | N | Max. dagsom | Datum | | |
| | Gem. | N | Gem. | N | Hoogste | Datum | Gem. | N | | | | | Laagste | Datum |
| Lauwersoog | 1.3 | | 3.3 | | 6.5 | 18 | -0.7 | | -5.9 | 6 | 45.4 | | 9.2 | 19 |
| Hoorn (Tersch.) | 1.7 | 2.7 | 3.5 | | 6.7 | 14 | -0.2 | | -6.5 | 6 | 54.0 | | 11.7 | 23 |
| Vlieland | 2.4 | | 4.2 | | 7.4 | 18 | 0.6 | | -7.2 | 6 | | | | |
| Leeuwarden | 1.2 | 2.4 | 3.4 | 4.6 | 6.7 | 18 | -1.2 | -0.2 | -10.3 | 6 | 53.4 | 65.6 | 12.7 | 23 |
| Nieuw Beerta | 0.7 | | 3.0 | | 7.5 | 19 | -1.7 | | -9.6 | 6 | 26.9 | | 6.1 | 23 |
| Eelde | 0.9 | 2.0 | 3.3 | 4.4 | 7.3 | 19 | -1.6 | -0.8 | -10.2 | 6 | 44.9 | 69.0 | 13.2 | 23 |
| De Kooy | 1.9 | 3.2 | 4.1 | 5.2 | 7.9 | 18 | -0.5 | 0.8 | -6.8 | 6 | 63.9 | 64.4 | 15.0 | 23 |
| Stavoren | 0.8 | | 2.8 | | 6.1 | 19 | -1.4 | | -9.3 | 6 | 48.2 | | 18.6 | 23 |
| Hoogeveen | 0.5 | | 3.0 | | 7.7 | 19 | -2.0 | | -9.4 | 6 | 42.5 | | 11.9 | 23 |
| Marknesse | 0.6 | | 2.9 | | 7.1 | 18 | -1.6 | | -8.5 | 6 | 45.0 | | 15.1 | 23 |
| Berkhout | 1.3 | | 3.8 | | 7.5 | 18 | -1.1 | | -8.6 | 6 | 56.4 | | 14.8 | 23 |
| Wijk aan Zee | 1.9 | | 4.5 | | 8.2 | 18 | -0.7 | | -10.0 | 6 | 64.2 | | 17.0 | 23 |
| Lelystad | 0.8 | 2.5 | 3.5 | | 8.0 | 19 | -2.0 | | -9.2 | 10 | 46.5 | | 16.0 | 23 |
| Heino | 0.4 | | 3.3 | | 8.7 | 19 | -2.8 | | -10.8 | 6 | 44.0 | | 12.7 | 23 |
| Schiphol | 1.2 | 3.0 | 4.0 | 5.4 | 7.8 | 19 | -1.7 | 0.5 | -8.8 | 3 | 47.6 | 62.1 | 11.9 | 23 |
| Twenthe | 0.1 | 2.1 | 3.0 | 4.4 | 8.9 | 19 | -3.3 | -0.6 | -15.4 | 6 | 42.4 | 70.6 | 13.6 | 23 |
| Valkenburg | 1.4 | 3.4 | 4.2 | 5.6 | 8.3 | 19 | -1.3 | 0.7 | -8.2 | 6 | 52.7 | 64.9 | 16.4 | 23 |
| De Bilt | 0.8 | 2.8 | 3.7 | 5.2 | 8.8 | 19 | -2.2 | 0.0 | -10.5 | 10 | 53.7 | 67.0 | 22.6 | 23 |
| Hupsel | -0.4 | | 2.5 | | 9.1 | 19 | -3.9 | | -17.4 | 6 | 42.1 | | 13.9 | 23 |
| Deelen | 0.0 | 2.2 | 3.1 | 4.6 | 8.6 | 19 | -3.5 | -0.5 | -15.4 | 6 | 62.9 | | 26.3 | 23 |
| Hoek van Holland | 1.7 | | 4.5 | | 8.2 | 23 | -0.7 | | -8.0 | 9 | 50.5 | | 16.8 | 23 |
| Cabauw | 0.7 | | 3.6 | | 8.6 | 19 | -2.2 | | -10.0 | 6 | 39.8 | | 17.1 | 23 |
| Rotterdam | 1.2 | 3.4 | 4.0 | 5.7 | 8.6 | 19 | -1.4 | 0.7 | -8.9 | 9 | 53.2 | 67.0 | 18.6 | 23 |
| Herwijnen | 0.3 | | 3.3 | | 9.0 | 19 | -2.9 | | -12.0 | 6 | 44.5 | | 18.8 | 23 |
| Volkel | -0.2 | 2.6 | 3.1 | 5.2 | 9.7 | 19 | -4.1 | -0.2 | -16.8 | 6 | 42.5 | 60.5 | 14.8 | 23 |
| Gilze-Rijen | 0.1 | 2.9 | 3.4 | 5.5 | 9.8 | 19 | -3.6 | -0.1 | -18.1 | 7 | 44.5 | 69.9 | 16.3 | 23 |
| Wilhelminadorp | 1.2 | | 3.5 | | 9.2 | 19 | -1.2 | | -8.7 | 10 | 40.1 | | 15.6 | 23 |
| Arcen | -0.4 | | 3.0 | | 10.4 | 19 | -4.4 | | -18.7 | 6 | 44.2 | | 14.5 | 23 |
| Vlissingen | 1.6 | 3.8 | 3.6 | 5.6 | 8.4 | 19 | -0.3 | 1.9 | -6.5 | 9 | 35.4 | 58.7 | 13.0 | 23 |
| Woensdrecht | 0.5 | | 3.5 | | 9.7 | 19 | -3.0 | | -14.5 | 10 | | | | |
| Eindhoven | 0.0 | 2.8 | 3.2 | 5.4 | 9.9 | 19 | -3.8 | 0.0 | -18.2 | 6 | 48.6 | | 17.0 | 23 |
| Westdorpe | 0.9 | | 3.6 | | 9.6 | 19 | -1.7 | | -11.5 | 10 | 46.5 | | 21.5 | 23 |
| Ell | -0.5 | | 2.9 | | 11.0 | 19 | -4.4 | | -20.8 | 6 | 45.6 | | 15.2 | 23 |
| Maastricht | -0.3 | 2.6 | 3.0 | 5.0 | 10.8 | 19 | -3.8 | -0.1 | -16.2 | 7 | 33.8 | 60.5 | 14.0 | 23 |

Maandgemiddelden en maandsommen, overige

| Station | Globale straling (J/cm ²) | | Zonneschijn (berekend uit globale straling) | | | | Relatieve vochtigheid (percentage) | | Dampdruk (hPa) | | Windsnelheid (m/s) | | Luchtdruk zeeniveau (hPa) | |
|------------------|---------------------------------------|------|---|------|----|----|------------------------------------|----|----------------|-----|--------------------|-----|---------------------------|--------|
| | Som | N | uren | N | % | N | Gem. | N | Gem. | N | Gem. | N | Gem. | N |
| Lauwersoog | 7486 | | 79.7 | | 32 | | 90 | | 6.1 | | 5.8 | | | |
| Hoorn (Terschl.) | 8422 | | 98.9 | | 39 | | 89 | | 6.2 | | 6.5 | | 1012.7 | |
| Vlieland | | | | | | | 87 | | 6.4 | | 7.9 | | 1012.6 | |
| Leeuwarden | 8386 | | 94.4 | 48.4 | 37 | 19 | 91 | 90 | 6.1 | 6.8 | 4.8 | 6.0 | 1013.1 | 1014.8 |
| Nieuw Beerta | 6880 | | 65.0 | | 26 | | 90 | | 5.8 | | 5.1 | | | |
| Eelde | 7191 | 6505 | 69.8 | 46.7 | 28 | 18 | 92 | 91 | 6.1 | 6.7 | 4.2 | 5.5 | 1013.6 | 1015.1 |
| De Kooy | 8387 | 7004 | 96.2 | 53.1 | 38 | 21 | 88 | 88 | 6.2 | 7.0 | 5.7 | 7.1 | 1012.9 | 1014.8 |
| Stavoren | 8635 | | 97.2 | | 38 | | 92 | | 6.0 | | 5.7 | | | |
| Hoogeveen | 7702 | | 75.3 | | 30 | | 91 | | 5.9 | | 4.3 | | 1013.9 | |
| Marknesse | 8661 | | 90.8 | | 36 | | 91 | | 5.9 | | 4.5 | | | |
| Berkhout | 9228 | | 110.3 | | 43 | | 89 | | 6.1 | | 4.9 | | | |
| Wijk aan Zee | 8736 | | 101.2 | | 40 | | 85 | | 6.1 | | | | | |
| Lelystad | 8841 | | 97.0 | | 38 | | 89 | | 5.9 | | 4.3 | | 1013.6 | |
| Heino | 8156 | | 80.2 | | 31 | | 88 | | 5.7 | | 3.2 | | | |
| Schiphol | 8848 | | 101.6 | 53.0 | 40 | 21 | 88 | 89 | 6.0 | 7.1 | 4.9 | 6.2 | 1013.3 | 1015.6 |
| Twente | 8244 | | 74.4 | 45.6 | 29 | 18 | 88 | 89 | 5.5 | 6.6 | 3.4 | 4.2 | 1014.4 | 1016.1 |
| Valkenburg | 8782 | | 103.1 | 54.0 | 40 | 21 | 89 | 86 | 6.1 | 7.0 | 4.1 | 6.2 | 1013.2 | 1015.6 |
| De Bilt | 9255 | 6938 | 100.8 | 52.4 | 39 | 20 | 86 | 88 | 5.7 | 6.8 | 3.7 | 4.1 | 1013.7 | 1016.0 |
| Hupsel | 9280 | | 93.1 | | 36 | | 87 | | 5.3 | | 3.5 | | | |
| Deelen | 9729 | | 107.5 | 47.4 | 42 | 18 | 87 | 88 | 5.4 | 6.6 | 3.9 | 5.2 | 1014.1 | 1016.2 |
| Hoek van Holland | 9145 | | 97.3 | | 38 | | 87 | | 6.2 | | 6.9 | | 1013.1 | |
| Cabauw | 9596 | | 106.7 | | 41 | | 88 | | 5.8 | | 4.4 | | 1013.6 | |
| Rotterdam | 8618 | | 95.2 | 53.7 | 37 | 21 | 88 | 89 | 6.0 | 7.2 | 4.6 | 5.9 | 1013.3 | 1015.9 |
| Hervijnen | 10254 | | 111.4 | | 43 | | 88 | | 5.6 | | 4.0 | | | |
| Volkel | 9754 | | 103.5 | | 40 | | 90 | 89 | 5.5 | 6.8 | 3.7 | 4.9 | 1014.2 | 1016.5 |
| Gilze-Rijen | 10048 | | 108.2 | 50.9 | 42 | 19 | 88 | 88 | 5.6 | 6.9 | 3.7 | 4.9 | 1013.9 | 1016.5 |
| Wilhelminadorp | 9079 | | 88.5 | | 34 | | 88 | | 6.0 | | 4.8 | | 1013.2 | |
| Arcen | 9965 | | 102.3 | | 39 | | 86 | | 5.3 | | 2.9 | | | |
| Vlissingen | 9182 | 7860 | 89.4 | 55.5 | 34 | 21 | 89 | 87 | 6.2 | 7.2 | 6.5 | 7.5 | 1013.2 | 1016.2 |
| Woensdrecht | | | | | | | 86 | | 5.6 | | 3.3 | | 1013.6 | |
| Eindhoven | 10639 | | 106.3 | 53.5 | 41 | 21 | 86 | 88 | 5.4 | 6.8 | 3.7 | 5.0 | 1014.1 | 1016.7 |
| Westdorpe | 9115 | | 86.8 | | 33 | | 86 | | 5.8 | | 4.0 | | 1013.5 | |
| Eil | 10084 | | 107.6 | | 41 | | 88 | | 5.4 | | 3.5 | | | |
| Maastricht | 10836 | 7820 | 119.3 | 50.6 | 45 | 19 | 85 | 88 | 5.2 | 6.8 | 4.4 | 5.3 | 1014.6 | 1017.4 |



Figuur 5: Etmaalwaarden van de gemiddelde temperatuur, De Bilt, 2009

De zwarte lijn toont de gemeten gemiddelde etmaaltemperatuur in het lopende jaar. De rode lijn geeft (per datum) de hoogst gemeten temperatuur sinds 1901, de blauwe lijn de laagste temperatuur. De groene lijn is het vijf-daagse voortschrijdend gemiddelde, gemiddeld over het tijdvak 1971-2000.

Temperatuur, "aantal dagen met"

| Station | Gemiddelde temperatuur (°C) | | | | | | | | | | Minimum temperatuur (°C) | | | | | | Maximum temperatuur (°C) | | | | | | | | | | | | |
|------------------|-----------------------------|---|-------|---|-------|---|------|----|-----|----|--------------------------|----|-------|----|----|---------|--------------------------|----|--------------|---|---|--------|---|--------|---|--------|---|-------|---|
| | > 20.0 | | 20-15 | | 15-10 | | 10-5 | | 5-0 | | < 0.0 | | < 0.0 | | | < -10.0 | | | < 0.0 (10cm) | | | > 30.0 | | > 25.0 | | > 20.0 | | < 0.0 | |
| | A | N | A | N | A | N | A | N | A | N | A | N | A | N | A | N | A | N | A | N | A | N | A | N | A | N | A | N | A |
| Lauwersoog | . | . | . | . | . | . | . | . | . | . | 22 | 9 | 15 | . | . | 19 | . | . | . | . | . | . | . | . | . | . | . | 2 | |
| Hoorn (Terschl.) | . | . | . | . | . | . | . | . | . | . | 23 | 8 | 15 | . | . | 15 | . | . | . | . | . | . | . | . | . | . | . | . | |
| Vlieland | . | . | . | . | . | . | 2 | 23 | 6 | . | . | . | 12 | . | . | 13 | . | . | . | . | . | . | . | . | . | . | . | . | |
| Leeuwarden | . | . | . | . | . | 0 | . | 9 | 20 | 15 | 11 | 7 | 17 | 12 | 1 | 2 | 20 | 15 | . | . | . | . | . | . | . | . | 2 | 4 | |
| Nieuw Beerta | . | . | . | . | . | . | . | . | 18 | 13 | . | . | 17 | . | . | 22 | . | . | . | . | . | . | . | . | . | . | . | 4 | |
| Eelde | . | . | . | . | . | 0 | . | 8 | 18 | 14 | 13 | 8 | 17 | 14 | 1 | 2 | 22 | 16 | . | . | . | . | . | . | . | . | 4 | 5 | |
| De Kooy | . | . | . | . | . | 0 | 1 | 12 | 21 | 13 | 9 | 6 | 15 | 11 | . | 1 | 19 | 12 | . | . | . | . | . | . | . | . | . | 4 | |
| Stavoren | . | . | . | . | . | . | . | . | 21 | 10 | . | . | 16 | . | . | 18 | . | . | . | . | . | . | . | . | . | . | . | 5 | |
| Hoogeveen | . | . | . | . | . | . | . | . | 16 | 15 | . | . | 18 | . | . | 20 | . | . | . | . | . | . | . | . | . | . | . | 5 | |
| Marknesse | . | . | . | . | . | . | . | . | 16 | 15 | . | . | 17 | . | . | 20 | . | . | . | . | . | . | . | . | . | . | . | 4 | |
| Berkhout | . | . | . | . | . | . | 1 | 22 | 8 | . | . | 16 | . | . | 20 | . | . | . | . | . | . | . | . | . | . | . | . | 3 | |
| Wijk aan Zee | . | . | . | . | . | . | 5 | 18 | 8 | . | . | 16 | . | . | 16 | . | . | . | . | . | . | . | . | . | . | . | . | 1 | |
| Lelystad | . | . | . | . | . | . | 1 | 16 | 14 | . | . | 17 | . | . | 20 | . | . | . | . | . | . | . | . | . | . | . | . | 4 | |
| Heino | . | . | . | . | . | . | 1 | 16 | 14 | . | . | 19 | . | 3 | 22 | . | . | . | . | . | . | . | . | . | . | . | . | 4 | |
| Schiphol | . | . | . | . | . | 1 | 2 | 12 | 18 | 13 | 11 | 6 | 18 | 12 | . | 1 | 19 | 14 | . | . | . | . | . | . | . | . | . | 4 | 4 |
| Twenthe | . | . | . | . | . | 1 | 1 | 9 | 17 | 13 | 8 | 18 | 14 | 4 | 2 | 22 | 16 | . | . | . | . | . | . | . | . | . | 6 | 5 | |
| Valkenburg | . | . | . | . | . | 0 | 3 | 13 | 18 | 12 | 10 | 6 | 16 | 11 | . | 1 | 19 | 14 | . | . | . | . | . | . | . | . | 4 | 3 | |
| De Bilt | . | . | . | . | . | 1 | 3 | 11 | 15 | 13 | 13 | 7 | 17 | 13 | 2 | 2 | 21 | 16 | . | . | . | . | . | . | . | . | 4 | 4 | |
| Hupsel | . | . | . | . | . | . | 2 | 15 | 14 | . | . | 18 | . | 5 | 24 | . | . | . | . | . | . | . | . | . | . | . | . | 5 | |
| Deelen | . | . | . | . | . | 1 | . | 9 | 16 | 14 | 15 | 8 | 20 | 14 | 6 | 2 | 25 | 17 | . | . | . | . | . | . | . | . | 5 | 4 | |
| Hoek van Holland | . | . | . | . | . | . | 3 | 21 | 7 | . | . | 16 | . | . | 16 | . | . | . | . | . | . | . | . | . | . | . | . | 3 | |
| Cabauw | . | . | . | . | . | . | 2 | 16 | 13 | . | . | 18 | . | . | . | . | . | . | . | . | . | . | . | . | . | . | . | 5 | |
| Rotterdam | . | . | . | . | . | 1 | 4 | 13 | 16 | 12 | 11 | 6 | 16 | 11 | . | 1 | 17 | 14 | . | . | . | . | . | . | . | . | 4 | 3 | |
| Hervijnen | . | . | . | . | . | . | 4 | 12 | 15 | . | . | 19 | . | 3 | 23 | . | . | . | . | . | . | . | . | . | . | . | . | 5 | |
| Volkel | . | . | . | . | . | 1 | 4 | 10 | 12 | 13 | 15 | 7 | 24 | 14 | 6 | 1 | 26 | 16 | . | . | . | . | . | . | . | . | 7 | 4 | |
| Gilze-Rijen | . | . | . | . | . | 1 | 4 | 10 | 13 | 13 | 14 | 7 | 21 | 13 | 4 | 2 | 21 | 16 | . | . | . | . | . | . | . | . | 5 | 4 | |
| Wilhelminadorp | . | . | . | . | . | . | 4 | 15 | 12 | . | . | 16 | . | . | 17 | . | . | . | . | . | . | . | . | . | . | . | . | 4 | |
| Arcen | . | . | . | . | . | . | 2 | 16 | 13 | . | . | 23 | . | 7 | 25 | . | . | . | . | . | . | . | . | . | . | . | . | 6 | |
| Vlissingen | . | . | . | . | . | 0 | 3 | 14 | 21 | 13 | 7 | 4 | 14 | 7 | . | 0 | 15 | 8 | . | . | . | . | . | . | . | . | 3 | 3 | |
| Woensdrecht | . | . | . | . | . | . | 4 | 13 | 14 | . | . | 18 | . | 4 | 20 | . | . | . | . | . | . | . | . | . | . | . | . | 5 | |
| Eindhoven | . | . | . | . | . | 1 | 4 | 10 | 14 | 13 | 13 | 7 | 19 | 13 | 5 | 1 | 24 | 16 | . | . | . | . | . | . | . | . | 6 | 4 | |
| Westdorpe | . | . | . | . | . | . | 5 | 14 | 12 | . | . | 16 | . | 3 | 21 | . | . | . | . | . | . | . | . | . | . | . | . | 5 | |
| Eil | . | . | . | . | . | . | 4 | 13 | 14 | . | . | 21 | . | 6 | 25 | . | . | . | . | . | . | . | . | . | . | . | . | 7 | |
| Maastricht | . | . | . | . | . | 1 | 5 | 10 | 10 | 13 | 16 | 7 | 20 | 14 | 5 | 2 | 23 | 16 | . | . | . | . | . | . | . | . | 7 | 4 | |

Neerslag, wind en zon, "aantal dagen met"

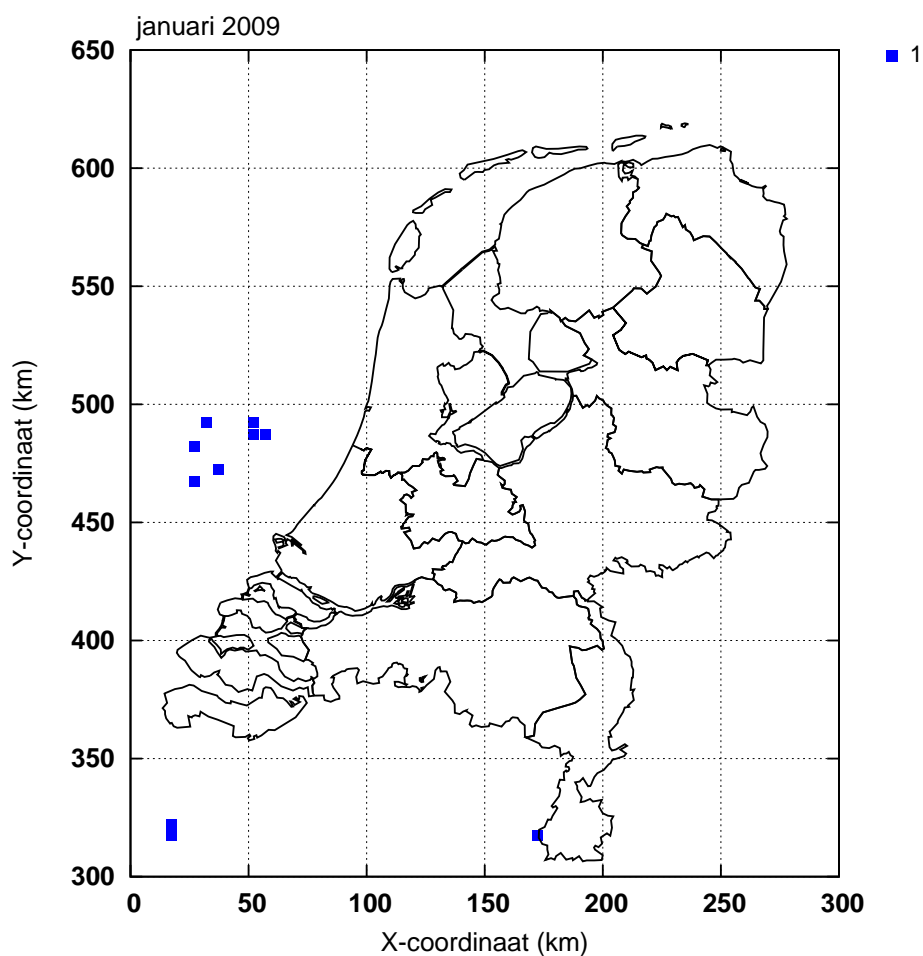
| Station | Neerslag (mm) | | | | | | | | Windkracht (Beaufort) Maximum uurgemiddelde | | | | | | | | Zonneschijn (percentage) | | | | | |
|------------------|---------------|----|-------|----|-------|----|--------|---|--|----|-----|----|-----|---|-----|---|--------------------------|----|------|----|------|---|
| | Droog | | ≥ 0.1 | | ≥ 1.0 | | ≥ 10.0 | | < 4 | | ≥ 6 | | ≥ 7 | | ≥ 8 | | Zonloos | | < 20 | | ≥ 80 | |
| | A | N | A | N | A | N | A | N | A | N | A | N | A | N | A | N | A | N | A | N | A | N |
| Lauwersoog | 16 | | 15 | | 7 | | | | 15 | | 7 | | | | | | 8 | | 16 | | 5 | |
| Hoorn (Terschl.) | 12 | | 15 | | 8 | | 3 | | 8 | | 9 | | 2 | | | | 8 | | 11 | | 6 | |
| Vlieland | | | | | | | | | 5 | | 17 | | 7 | | | | | | | | | |
| Leeuwarden | 13 | 8 | 12 | 18 | 7 | 13 | 2 | 1 | 20 | 16 | 2 | 8 | | 3 | | 1 | 9 | 14 | 12 | 20 | 6 | 1 |
| Nieuw Beerta | 18 | | 12 | | 8 | | | | 16 | | 3 | | | | | | 13 | | 18 | | 3 | |
| Eelde | 15 | 7 | 13 | 18 | 8 | 13 | 1 | 2 | 23 | 17 | 1 | 7 | | 3 | | 1 | 10 | 14 | 20 | 21 | 3 | 1 |
| De Kooy | 12 | 7 | 15 | 19 | 8 | 13 | 2 | 1 | 16 | 11 | 8 | 13 | 2 | 6 | | 2 | 8 | 12 | 15 | 19 | 6 | 1 |
| Stavoren | 13 | | 14 | | 6 | | 1 | | 17 | | 7 | | | | | | 7 | | 15 | | 6 | |
| Hoogeveen | 15 | | 13 | | 8 | | 1 | | 22 | | | | | | | | 11 | | 17 | | 6 | |
| Marknesse | 14 | | 15 | | 8 | | 1 | | 22 | | 2 | | | | | | 8 | | 14 | | 6 | |
| Berkhout | 15 | | 16 | | 9 | | 2 | | 19 | | 4 | | | | | | 7 | | 13 | | 5 | |
| Wijk aan Zee | 16 | | 15 | | 13 | | 2 | | | | | | | | | | 6 | | 12 | | 6 | |
| Lelystad | 14 | | 14 | | 8 | | 1 | | 19 | | 2 | | | | | | 10 | | 15 | | 8 | |
| Heino | 14 | | 16 | | 6 | | 2 | | 28 | | | | | | | | 10 | | 18 | | 4 | |
| Schiphol | 14 | 9 | 15 | 17 | 10 | 12 | 1 | 1 | 20 | 15 | 4 | 10 | 1 | 4 | | 1 | 7 | 13 | 14 | 20 | 8 | 2 |
| Twente | 13 | 8 | 14 | 17 | 6 | 12 | 2 | 2 | 25 | 24 | | 2 | | 0 | | 0 | 11 | 15 | 18 | 22 | 7 | 2 |
| Valkenburg | 17 | 7 | 12 | 18 | 9 | 12 | 1 | 1 | 22 | 14 | 2 | 10 | | 4 | | 1 | 6 | 13 | 12 | 20 | 6 | 1 |
| De Bilt | 13 | 7 | 12 | 18 | 8 | 13 | 1 | 2 | 26 | 24 | | 2 | | 0 | | 0 | 7 | 14 | 16 | 20 | 10 | 2 |
| Hupsel | 17 | | 11 | | 7 | | 1 | | 25 | | | | | | | | 6 | | 18 | | 8 | |
| Deelen | 16 | | 10 | | 8 | | 1 | | 24 | 18 | | 5 | | 1 | | 0 | 7 | 15 | 13 | 22 | 10 | 2 |
| Hoek van Holland | 18 | | 13 | | 9 | | 2 | | 8 | | 10 | | 6 | | | | 5 | | 11 | | 4 | |
| Cabauw | 16 | | 13 | | 9 | | 1 | | 21 | | 3 | | 1 | | | | 7 | | 14 | | 8 | |
| Rotterdam | 17 | 10 | 13 | 16 | 7 | 11 | 2 | 2 | 19 | 16 | 4 | 9 | | 3 | | 1 | 5 | 13 | 15 | 20 | 5 | 2 |
| Herwijnen | 18 | | 12 | | 8 | | 1 | | 24 | | 2 | | 1 | | | | 4 | | 13 | | 10 | |
| Volkel | 16 | 9 | 12 | 17 | 8 | 12 | 1 | 1 | 26 | 20 | 2 | 5 | | 1 | | 0 | 5 | | 16 | | 10 | |
| Gilze-Rijen | 14 | 8 | 12 | 17 | 7 | 13 | 1 | 2 | 24 | 20 | 3 | 4 | | 1 | | 0 | 4 | 14 | 15 | 21 | 8 | 2 |
| Wilhelminadorp | 17 | | 14 | | 9 | | 1 | | 20 | | 4 | | 2 | | | | 6 | | 13 | | 5 | |
| Arcen | 20 | | 9 | | 7 | | 1 | | 29 | | | | | | | | 9 | | 16 | | 9 | |
| Vlissingen | 15 | 8 | 11 | 18 | 9 | 12 | 1 | 1 | 13 | 10 | 11 | 14 | 5 | 7 | 1 | 3 | 5 | 12 | 14 | 20 | 5 | 1 |
| Woensdrecht | | | | | | | | | 26 | | 1 | | | | | | | | | | | |
| Eindhoven | 14 | | 12 | | 7 | | 1 | | 25 | 19 | 2 | 5 | | 1 | | 0 | 6 | 13 | 13 | 20 | 10 | 2 |
| Westdorpe | 18 | | 10 | | 7 | | 1 | | 22 | | 3 | | 1 | | | | 7 | | 16 | | 6 | |
| Eil | 17 | | 10 | | 6 | | 2 | | 23 | | 3 | | | | | | 5 | | 13 | | 7 | |
| Maastricht | 16 | 7 | 10 | 18 | 6 | 12 | 1 | 1 | 21 | 17 | 4 | 6 | | 2 | | 0 | 7 | 14 | 12 | 21 | 10 | 2 |

Onweer, mist en sneeuw, "aantal dagen met"

| Station | Onweer | | Mist | | Sneeuw | |
|-------------|--------|---|------|---|--------|---|
| | A | N | A | N | A | N |
| Leeuwarden | . | 0 | 10 | 8 | 2 | 7 |
| Eelde | . | 0 | 11 | 8 | 2 | 8 |
| De Kooy | . | 0 | 8 | 8 | 5 | 6 |
| Schiphol | . | 1 | 8 | 8 | 4 | 6 |
| Twente | . | 1 | 8 | 7 | 6 | 8 |
| Valkenburg | . | 1 | 8 | 7 | 1 | 5 |
| De Bilt | . | 1 | 11 | 8 | 5 | 6 |
| Deelen | . | 1 | 13 | 9 | 4 | 8 |
| Rotterdam | . | 1 | 8 | 7 | 2 | 6 |
| Volkel | . | 1 | 10 | 7 | 5 | 6 |
| Gilze-Rijen | . | 1 | 10 | 8 | 5 | 6 |
| Vlissingen | . | 0 | | 6 | | 5 |
| Eindhoven | . | 0 | 10 | 7 | 6 | 6 |
| Maastricht | 1 | 1 | 9 | 6 | 6 | 7 |

Bodemtemperaturen (°C)

| Datum | Nieuw Beerta | | | | Marknesse | | | | De Bilt | | | | Wilhelminadorp | | | |
|-------|--------------|-----|-----|-----|-------------|-----|-----|-----|-------------|-----|-----|-----|----------------|-----|-----|-----|
| | Diepte (cm) | | | | Diepte (cm) | | | | Diepte (cm) | | | | Diepte (cm) | | | |
| | 10 | 20 | 50 | 100 | 10 | 20 | 50 | 100 | 10 | 20 | 50 | 100 | 10 | 20 | 50 | 100 |
| 2 | 0.2 | 0.8 | 2.9 | 6.3 | 0.5 | 1.3 | 3.5 | 6.2 | 0.8 | 1.8 | 4.1 | 6.3 | 0.8 | 1.4 | 3.6 | 6.2 |
| 7 | 0.1 | 0.6 | 2.4 | 5.6 | 0.4 | 1.1 | 2.9 | 5.5 | 0.6 | 1.6 | 3.6 | 5.6 | 0.5 | 1.1 | 3.2 | 5.5 |
| 12 | -0.3 | 0.2 | 1.9 | 5.1 | 0.1 | 0.7 | 2.5 | 5.0 | 0.2 | 1.1 | 3.0 | 5.0 | 0.2 | 0.7 | 2.6 | 5.0 |
| 17 | 0.0 | 0.5 | 1.8 | 4.8 | 0.6 | 1.0 | 2.3 | 4.5 | 2.5 | 2.6 | 3.4 | 4.8 | 2.5 | 2.5 | 3.1 | 4.7 |
| 22 | 1.0 | 1.4 | 2.3 | 4.6 | 2.2 | 2.5 | 3.1 | 4.1 | 3.2 | 3.7 | 4.4 | 5.2 | 3.3 | 3.5 | 4.2 | 5.0 |
| 27 | 1.3 | 1.7 | 2.9 | 4.8 | 1.8 | 2.3 | 3.4 | 4.4 | 1.8 | 2.8 | 4.3 | 5.4 | 2.5 | 3.0 | 4.1 | 5.1 |
| Gem. | 0.6 | 1.0 | 2.4 | 5.1 | 1.2 | 1.6 | 2.9 | 4.8 | 1.7 | 2.3 | 3.8 | 5.3 | 1.8 | 2.1 | 3.5 | 5.2 |



Figuur 6: Onweer

Ontladingen in Nederland, de kustwateren en het aangrenzende buitenland, zoals geregistreerd door het Nederlands-Belgische detectiesysteem. Het kaartje geeft het aantal ont-ladingen per 5×5 km vak.

Etmaalgemiddelden en etmaalsommen

| Datum | Temperatuur (°C) | | | | | | | | | | | | | | |
|----------|------------------|---------|---------|------------|------------|---------|---------|---------|------------|------------|---------|---------|---------|------------|------------|
| | Gemiddeld | | | | | Maximum | | | | | Minimum | | | | |
| | Eelde | De Kooy | De Bilt | Vlissingen | Maastricht | Eelde | De Kooy | De Bilt | Vlissingen | Maastricht | Eelde | De Kooy | De Bilt | Vlissingen | Maastricht |
| 1 | 0.4 | 2.4 | -0.6 | -0.5 | -3.8 | 2.4 | 4.4 | 0.5 | 0.9 | -2.0 | -2.2 | 0.5 | -2.8 | -1.9 | -6.6 |
| 2 | -0.8 | 0.6 | -0.8 | 1.3 | -1.2 | 1.8 | 3.1 | 1.9 | 3.7 | 0.1 | -6.1 | -3.7 | -7.2 | -2.0 | -3.8 |
| 3 | 0.6 | 2.5 | -2.7 | -0.5 | -3.5 | 3.5 | 4.5 | 1.6 | 2.0 | 0.3 | -4.8 | -2.5 | -8.9 | -3.4 | -8.1 |
| 4 | 2.8 | 3.7 | 2.3 | 2.7 | -0.8 | 4.6 | 5.3 | 3.5 | 3.3 | 0.1 | 0.5 | 0.4 | 1.3 | 0.8 | -1.9 |
| 5 | -2.3 | -1.0 | -1.2 | 0.1 | -2.9 | 0.7 | 1.5 | 1.5 | 3.3 | -0.9 | -6.5 | -2.7 | -4.6 | -2.4 | -9.3 |
| 6 | -5.8 | -3.3 | -5.9 | -3.2 | -12.1 | -1.7 | 1.4 | -1.3 | -1.5 | -7.8 | -10.2 | -6.8 | -9.6 | -5.4 | -16.1 |
| 7 | -0.1 | 2.4 | -0.8 | 0.4 | -7.8 | 2.7 | 5.4 | 3.5 | 4.4 | -2.8 | -3.6 | -1.1 | -6.7 | -4.0 | -16.2 |
| 8 | -3.3 | -0.2 | -4.5 | -1.8 | -5.6 | -0.3 | 3.5 | -3.1 | 2.0 | -2.2 | -5.5 | -3.6 | -7.3 | -4.3 | -10.9 |
| 9 | -2.1 | -1.1 | -6.9 | -4.9 | -10.6 | -0.6 | 0.6 | -1.6 | -3.4 | -4.5 | -5.0 | -4.2 | -10.3 | -6.5 | -15.5 |
| 10 | -2.6 | -3.0 | -6.8 | -3.8 | -8.1 | 0.8 | 0.2 | -3.6 | -1.8 | -1.8 | -5.7 | -5.4 | -10.5 | -6.1 | -13.2 |
| 11 | -0.4 | 2.5 | -1.1 | 0.1 | -0.6 | 2.8 | 4.7 | 2.4 | 3.0 | 4.2 | -5.8 | -1.8 | -6.0 | -3.3 | -6.8 |
| 12 | 3.5 | 4.3 | 3.9 | 3.5 | 3.7 | 5.3 | 5.5 | 5.8 | 4.7 | 5.9 | 0.9 | 3.2 | 1.4 | 1.5 | 0.7 |
| 13 | 4.3 | 4.9 | 4.6 | 3.9 | 5.0 | 5.5 | 5.9 | 5.2 | 5.1 | 6.7 | 3.3 | 4.4 | 3.9 | 3.5 | 3.0 |
| 14 | 3.5 | 4.0 | 4.1 | 2.8 | 2.9 | 4.6 | 6.4 | 6.3 | 4.4 | 3.7 | 1.8 | 0.0 | 2.5 | 1.2 | 2.0 |
| 15 | 1.6 | 2.5 | 2.6 | 3.1 | 1.8 | 4.5 | 4.2 | 5.0 | 3.9 | 5.6 | 0.2 | 1.2 | 1.0 | 2.0 | -0.9 |
| 16 | 0.9 | 1.6 | 1.7 | 2.3 | 1.6 | 2.1 | 2.8 | 3.7 | 3.2 | 4.6 | -0.1 | 0.1 | 0.1 | 1.3 | -3.3 |
| 17 | 3.7 | 4.5 | 5.0 | 5.2 | 5.4 | 5.8 | 6.6 | 7.5 | 7.6 | 8.3 | 1.7 | 2.6 | 2.8 | 2.5 | 2.9 |
| 18 | 4.7 | 5.6 | 5.5 | 5.3 | 5.2 | 6.8 | 7.9 | 7.7 | 8.0 | 8.1 | 1.7 | 3.8 | 2.1 | 3.3 | 2.2 |
| 19 | 3.9 | 3.9 | 4.8 | 4.9 | 6.3 | 7.3 | 6.9 | 8.8 | 8.4 | 10.8 | 1.5 | 1.5 | 2.1 | 2.9 | 2.2 |
| 20 | 3.0 | 4.1 | 4.0 | 3.7 | 3.7 | 4.9 | 6.0 | 6.4 | 5.5 | 6.6 | 1.1 | 2.1 | 1.8 | 2.2 | 1.6 |
| 21 | 2.3 | 3.3 | 3.4 | 2.7 | 3.2 | 4.6 | 4.4 | 5.6 | 3.4 | 5.6 | 0.4 | 1.6 | 1.2 | 1.8 | 0.3 |
| 22 | 3.2 | 3.8 | 4.0 | 4.7 | 3.9 | 5.4 | 6.4 | 6.2 | 6.8 | 5.8 | 1.4 | 1.8 | 1.6 | 2.6 | 1.5 |
| 23 | 3.9 | 4.4 | 5.1 | 5.4 | 5.2 | 5.0 | 6.1 | 7.7 | 7.6 | 8.3 | 2.9 | 3.2 | 3.7 | 4.1 | 2.6 |
| 24 | 3.7 | 4.3 | 4.0 | 3.5 | 2.5 | 6.5 | 6.0 | 6.1 | 5.5 | 4.7 | 0.5 | 0.7 | 0.9 | 2.1 | 0.0 |
| 25 | 2.2 | 2.2 | 2.2 | 3.3 | 1.9 | 6.3 | 5.1 | 5.0 | 4.9 | 5.9 | 0.2 | 0.1 | -0.2 | 2.1 | -0.4 |
| 26 | 0.6 | 1.3 | 1.3 | 3.0 | 0.2 | 4.9 | 4.2 | 5.6 | 4.0 | 5.2 | -0.9 | -0.8 | -2.3 | 1.4 | -2.6 |
| 27 | -0.4 | -1.0 | -0.5 | -0.2 | -1.8 | 1.5 | 0.0 | 3.8 | 1.9 | 3.1 | -1.8 | -2.7 | -4.1 | -1.5 | -5.5 |
| 28 | -1.6 | -0.5 | -1.0 | 0.1 | -0.8 | -0.8 | 2.1 | 2.8 | 1.8 | 4.8 | -2.8 | -2.6 | -4.7 | -1.5 | -6.4 |
| 29 | -0.6 | -0.4 | -1.2 | 1.4 | -1.0 | 2.1 | 0.9 | 2.5 | 2.4 | 2.6 | -2.9 | -1.6 | -3.9 | 0.5 | -4.1 |
| 30 | -1.5 | -0.3 | 0.1 | 1.9 | -0.3 | 1.1 | 1.9 | 5.1 | 4.4 | 3.2 | -2.9 | -2.2 | -4.4 | -0.3 | -3.4 |
| 31 | -0.2 | 0.2 | 0.1 | 0.7 | -1.0 | 2.9 | 2.2 | 3.2 | 2.7 | 1.3 | -2.4 | -1.5 | -2.6 | -1.0 | -2.9 |
| dec. I | -1.3 | 0.3 | -2.8 | -1.0 | -5.6 | 1.4 | 3.0 | 0.3 | 1.3 | -2.1 | -4.9 | -2.9 | -6.7 | -3.5 | -10.2 |
| N | 1.6 | 3.1 | 2.6 | 3.8 | 2.5 | 4.1 | 5.2 | 5.0 | 5.7 | 4.8 | -1.3 | 0.6 | -0.2 | 1.8 | -0.1 |
| dec. II | 2.9 | 3.8 | 3.5 | 3.5 | 3.5 | 5.0 | 5.7 | 5.9 | 5.4 | 6.5 | 0.6 | 1.7 | 1.2 | 1.7 | 0.4 |
| N | 2.0 | 3.2 | 2.8 | 3.7 | 2.5 | 4.4 | 5.2 | 5.2 | 5.5 | 5.1 | -0.5 | 1.0 | 0.1 | 1.8 | -0.3 |
| dec. III | 1.1 | 1.6 | 1.6 | 2.4 | 1.1 | 3.6 | 3.6 | 4.9 | 4.1 | 4.6 | -0.8 | -0.4 | -1.3 | 0.9 | -1.9 |
| N | 2.2 | 3.2 | 2.9 | 3.8 | 2.8 | 4.6 | 5.2 | 5.5 | 5.7 | 5.2 | -0.5 | 0.8 | 0.2 | 2.0 | 0.2 |
| maand | 0.9 | 1.9 | 0.8 | 1.6 | -0.3 | 3.3 | 4.1 | 3.7 | 3.6 | 3.0 | -1.6 | -0.5 | -2.2 | -0.3 | -3.8 |
| N | 2.0 | 3.2 | 2.8 | 3.8 | 2.6 | 4.4 | 5.2 | 5.2 | 5.6 | 5.0 | -0.8 | 0.8 | 0.0 | 1.9 | -0.1 |

Etmaalgemiddelden en etmaalsommen

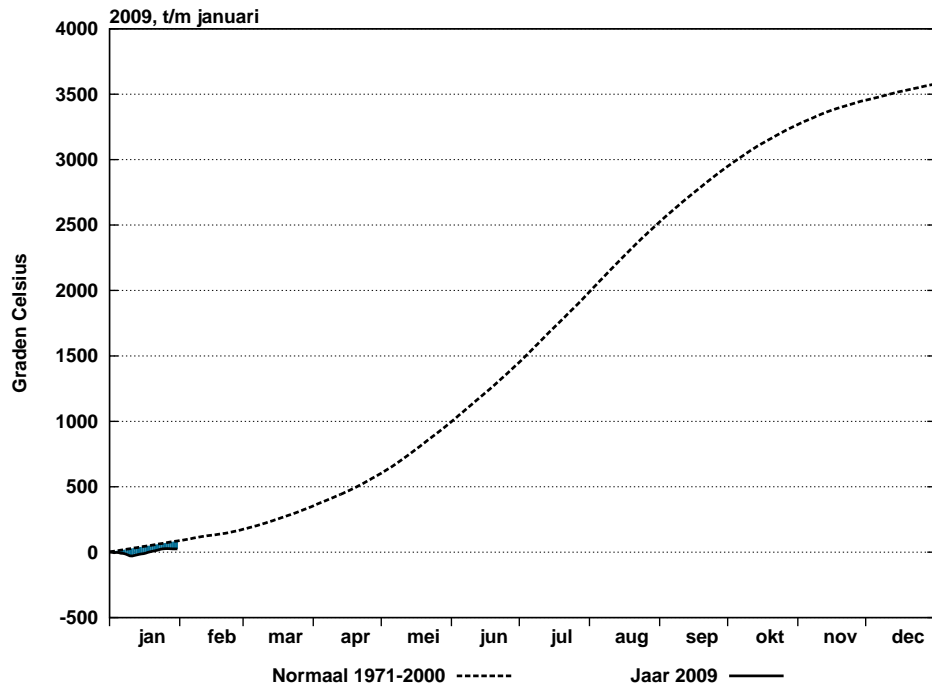
| Datum | Berekend uit globale straling | | | | | | | | | | Globale straling (J/cm2) | | | | |
|----------|-------------------------------|---------|---------|------------|------------|--------------------------|---------|---------|------------|------------|--------------------------|---------|---------|------------|------------|
| | Zonneschijn (uren) | | | | | Zonneschijn (percentage) | | | | | | | | | |
| | Eelde | De Kooy | De Bilt | Vlissingen | Maastricht | Eelde | De Kooy | De Bilt | Vlissingen | Maastricht | Eelde | De Kooy | De Bilt | Vlissingen | Maastricht |
| 1 | . | . | 0.2 | . | . | 0 | 0 | 3 | 0 | 0 | 73 | 58 | 81 | 51 | 94 |
| 2 | 5.4 | 5.6 | 1.0 | 1.1 | . | 71 | 73 | 13 | 14 | 0 | 321 | 345 | 146 | 174 | 67 |
| 3 | 0.7 | 0.8 | . | 4.8 | 7.0 | 9 | 10 | 0 | 60 | 87 | 161 | 155 | 90 | 503 | 528 |
| 4 | . | . | . | 1.3 | . | 0 | 0 | 0 | 16 | 0 | 85 | 102 | 78 | 149 | 91 |
| 5 | 4.9 | 6.3 | 3.8 | 1.5 | 0.5 | 63 | 81 | 48 | 19 | 6 | 321 | 383 | 311 | 189 | 125 |
| 6 | 6.5 | 6.7 | 6.8 | 7.0 | 7.0 | 84 | 86 | 86 | 87 | 86 | 555 | 413 | 483 | 471 | 552 |
| 7 | 0.5 | 2.6 | 1.1 | 1.8 | . | 6 | 33 | 14 | 22 | 0 | 125 | 241 | 204 | 204 | 118 |
| 8 | 1.3 | 4.2 | . | 1.9 | 1.5 | 17 | 54 | 0 | 23 | 18 | 168 | 343 | 133 | 247 | 246 |
| 9 | . | . | 6.5 | 2.8 | 6.9 | 0 | 0 | 81 | 34 | 84 | 49 | 122 | 439 | 259 | 395 |
| 10 | 6.5 | 6.8 | 6.8 | 6.8 | 7.2 | 82 | 86 | 84 | 83 | 87 | 438 | 442 | 496 | 490 | 496 |
| 11 | 6.1 | 4.8 | 6.9 | 5.5 | 7.0 | 77 | 60 | 85 | 67 | 85 | 321 | 336 | 459 | 417 | 536 |
| 12 | 1.1 | 1.5 | 0.2 | 1.0 | 3.9 | 14 | 19 | 2 | 12 | 47 | 211 | 176 | 208 | 250 | 334 |
| 13 | . | . | . | . | . | 0 | 0 | 0 | 0 | 0 | 34 | 89 | 69 | 78 | 92 |
| 14 | . | 4.8 | 1.0 | 1.0 | . | 0 | 59 | 12 | 12 | 0 | 96 | 326 | 207 | 188 | 49 |
| 15 | 3.5 | 1.6 | 6.9 | 3.8 | 7.1 | 43 | 20 | 84 | 46 | 84 | 260 | 214 | 441 | 318 | 499 |
| 16 | 1.5 | 0.7 | . | . | 2.2 | 18 | 9 | 0 | 0 | 26 | 240 | 138 | 177 | 145 | 293 |
| 17 | . | 1.0 | 0.8 | 2.5 | 3.4 | 0 | 12 | 10 | 30 | 40 | 93 | 121 | 113 | 219 | 298 |
| 18 | 0.4 | 0.5 | 0.7 | 2.7 | 0.5 | 5 | 6 | 8 | 32 | 6 | 58 | 108 | 93 | 292 | 98 |
| 19 | . | 0.8 | 1.0 | 1.0 | 1.6 | 0 | 10 | 12 | 12 | 19 | 63 | 76 | 89 | 182 | 197 |
| 20 | 0.2 | 3.3 | 3.5 | 5.5 | 5.6 | 2 | 40 | 41 | 64 | 65 | 136 | 304 | 320 | 463 | 504 |
| 21 | 0.2 | . | 1.0 | 1.6 | 3.6 | 2 | 0 | 12 | 19 | 42 | 183 | 144 | 239 | 303 | 279 |
| 22 | . | . | . | . | 0.7 | 0 | 0 | 0 | 0 | 8 | 168 | 85 | 90 | 107 | 231 |
| 23 | . | . | . | . | . | 0 | 0 | 0 | 0 | 0 | 61 | 72 | 78 | 80 | 102 |
| 24 | 0.5 | 4.2 | 2.6 | 3.8 | 3.7 | 6 | 49 | 30 | 44 | 42 | 195 | 382 | 258 | 360 | 349 |
| 25 | 5.5 | 5.8 | 5.9 | 2.8 | 7.0 | 64 | 68 | 68 | 32 | 79 | 436 | 451 | 460 | 345 | 543 |
| 26 | 6.0 | 6.7 | 5.8 | 0.4 | 6.0 | 70 | 78 | 66 | 5 | 67 | 477 | 486 | 475 | 244 | 455 |
| 27 | 0.8 | . | 7.0 | 3.8 | 4.9 | 9 | 0 | 80 | 43 | 55 | 157 | 127 | 523 | 367 | 474 |
| 28 | . | 7.1 | 7.7 | 1.3 | 8.0 | 0 | 81 | 87 | 15 | 89 | 178 | 530 | 567 | 194 | 728 |
| 29 | 7.8 | 5.1 | 7.9 | 7.7 | 8.0 | 89 | 58 | 89 | 86 | 88 | 528 | 400 | 654 | 567 | 684 |
| 30 | 4.8 | 7.4 | 7.7 | 8.0 | 8.0 | 54 | 84 | 86 | 88 | 88 | 489 | 607 | 623 | 651 | 683 |
| 31 | 5.6 | 7.9 | 8.0 | 8.0 | 8.0 | 63 | 89 | 89 | 88 | 87 | 511 | 611 | 651 | 675 | 696 |
| dec. I | 25.8 | 33.0 | 26.2 | 29.0 | 30.1 | 33 | 42 | 33 | 36 | 37 | 2296 | 2604 | 2461 | 2737 | 2712 |
| N | 12.1 | 13.7 | 13.2 | 13.1 | 12.6 | 16 | 18 | 17 | 16 | 16 | 1660 | 1747 | 1753 | 1945 | 2045 |
| dec. II | 12.8 | 19.0 | 21.0 | 23.0 | 31.3 | 16 | 23 | 25 | 28 | 37 | 1512 | 1888 | 2176 | 2552 | 2900 |
| N | 16.5 | 18.2 | 18.8 | 19.5 | 19.5 | 20 | 22 | 23 | 23 | 23 | 2089 | 2269 | 2274 | 2557 | 2613 |
| dec. III | 31.2 | 44.2 | 53.6 | 37.4 | 57.9 | 33 | 46 | 56 | 38 | 59 | 3383 | 3895 | 4618 | 3893 | 5224 |
| N | 18.0 | 21.3 | 20.4 | 22.9 | 18.4 | 19 | 22 | 21 | 24 | 19 | 2755 | 2988 | 2910 | 3358 | 3161 |
| maand | 69.8 | 96.2 | 100.8 | 89.4 | 119.3 | 28 | 38 | 39 | 34 | 45 | 7191 | 8387 | 9255 | 9182 | 10836 |
| N | 46.7 | 53.1 | 52.4 | 55.5 | 50.6 | 18 | 21 | 20 | 21 | 19 | 6505 | 7004 | 6938 | 7860 | 7820 |

Etmaalgemiddelden en etmaalsommen

| Datum | Gemiddelde luchtdruk op zeeniveau (hPa) | | | | | Gemiddelde windsnelheid (m/s) | | | | | Relatieve vochtigheid (percentage) | | | | |
|----------|--|---------|---------|------------|------------|----------------------------------|---------|---------|------------|------------|---------------------------------------|---------|---------|------------|------------|
| | Eelde | De Kooy | De Bilt | Vlissingen | Maastricht | Eelde | De Kooy | De Bilt | Vlissingen | Maastricht | Eelde | De Kooy | De Bilt | Vlissingen | Maastricht |
| 1 | 1028.1 | 1029.1 | 1029.6 | 1030.0 | 1029.9 | 2.2 | 1.9 | 1.6 | 2.4 | 1.4 | 98 | 90 | 92 | 89 | 98 |
| 2 | 1029.8 | 1030.3 | 1029.6 | 1029.4 | 1028.8 | 2.3 | 3.1 | 2.2 | 4.0 | 2.8 | 91 | 90 | 92 | 89 | 94 |
| 3 | 1025.3 | 1026.9 | 1027.8 | 1028.6 | 1028.2 | 3.9 | 3.8 | 1.9 | 2.9 | 2.2 | 92 | 77 | 89 | 89 | 90 |
| 4 | 1015.7 | 1017.3 | 1018.5 | 1020.6 | 1020.8 | 4.3 | 6.6 | 3.8 | 6.2 | 4.5 | 97 | 89 | 85 | 78 | 81 |
| 5 | 1024.0 | 1023.8 | 1021.9 | 1020.4 | 1019.7 | 5.2 | 8.5 | 5.2 | 8.4 | 5.1 | 85 | 77 | 81 | 84 | 95 |
| 6 | 1026.2 | 1026.6 | 1026.5 | 1026.0 | 1025.2 | 2.1 | 3.1 | 2.1 | 4.0 | 2.8 | 85 | 73 | 76 | 71 | 90 |
| 7 | 1021.6 | 1022.8 | 1023.3 | 1024.1 | 1024.6 | 3.2 | 3.4 | 2.0 | 3.8 | 3.5 | 97 | 88 | 89 | 88 | 91 |
| 8 | 1029.7 | 1029.5 | 1030.6 | 1030.0 | 1030.3 | 2.9 | 3.4 | 2.0 | 2.5 | 2.5 | 98 | 92 | 99 | 98 | 98 |
| 9 | 1030.2 | 1030.4 | 1030.6 | 1029.9 | 1030.1 | 2.6 | 2.4 | 0.9 | 2.4 | 1.6 | 87 | 78 | 95 | 98 | 97 |
| 10 | 1028.1 | 1027.6 | 1028.5 | 1028.2 | 1029.3 | 2.5 | 3.4 | 2.1 | 4.7 | 2.4 | 84 | 82 | 86 | 94 | 82 |
| 11 | 1025.4 | 1024.0 | 1027.2 | 1026.9 | 1029.8 | 6.3 | 8.7 | 4.1 | 8.1 | 5.9 | 77 | 76 | 71 | 78 | 59 |
| 12 | 1014.9 | 1013.4 | 1016.9 | 1016.7 | 1020.5 | 7.4 | 12.8 | 6.2 | 11.1 | 8.9 | 74 | 83 | 73 | 85 | 57 |
| 13 | 1010.4 | 1009.7 | 1011.6 | 1011.5 | 1013.6 | 5.5 | 8.2 | 4.2 | 7.5 | 6.0 | 99 | 98 | 96 | 98 | 82 |
| 14 | 1013.6 | 1014.0 | 1014.9 | 1015.5 | 1016.0 | 2.8 | 3.6 | 2.6 | 4.0 | 3.2 | 99 | 99 | 98 | 99 | 98 |
| 15 | 1020.9 | 1019.3 | 1019.8 | 1018.5 | 1020.3 | 2.8 | 4.4 | 3.3 | 6.1 | 2.5 | 99 | 88 | 84 | 89 | 80 |
| 16 | 1019.9 | 1018.2 | 1019.0 | 1018.0 | 1019.8 | 3.5 | 4.7 | 3.9 | 6.6 | 3.3 | 93 | 88 | 85 | 92 | 84 |
| 17 | 1012.3 | 1010.2 | 1012.6 | 1011.7 | 1015.3 | 5.3 | 8.1 | 5.1 | 10.4 | 6.8 | 97 | 94 | 90 | 93 | 89 |
| 18 | 996.4 | 995.2 | 997.7 | 997.8 | 1001.0 | 7.0 | 9.1 | 6.1 | 11.2 | 8.5 | 93 | 89 | 86 | 90 | 86 |
| 19 | 987.6 | 985.2 | 987.5 | 986.3 | 990.5 | 6.7 | 8.5 | 6.5 | 11.7 | 8.3 | 94 | 93 | 88 | 92 | 80 |
| 20 | 993.8 | 992.6 | 994.4 | 994.0 | 996.5 | 5.5 | 7.6 | 4.8 | 7.9 | 6.1 | 92 | 90 | 84 | 91 | 80 |
| 21 | 1004.8 | 1003.8 | 1005.0 | 1004.6 | 1006.3 | 3.2 | 5.4 | 3.5 | 7.1 | 4.1 | 93 | 93 | 87 | 95 | 84 |
| 22 | 994.2 | 991.1 | 993.5 | 991.7 | 996.5 | 6.8 | 8.4 | 6.4 | 12.1 | 7.8 | 91 | 91 | 88 | 93 | 80 |
| 23 | 973.0 | 972.8 | 973.2 | 974.1 | 975.7 | 5.2 | 7.2 | 5.9 | 10.5 | 6.9 | 98 | 94 | 92 | 93 | 90 |
| 24 | 986.6 | 987.5 | 988.9 | 989.9 | 990.5 | 4.7 | 5.0 | 3.2 | 4.8 | 4.2 | 95 | 90 | 87 | 94 | 92 |
| 25 | 997.5 | 995.1 | 996.3 | 994.1 | 997.3 | 3.9 | 6.4 | 4.8 | 9.0 | 4.5 | 90 | 87 | 85 | 87 | 80 |
| 26 | 1004.7 | 1003.4 | 1002.9 | 1001.7 | 1002.2 | 3.7 | 4.0 | 3.3 | 3.6 | 2.1 | 93 | 87 | 81 | 88 | 86 |
| 27 | 1015.9 | 1015.4 | 1015.0 | 1014.6 | 1014.3 | 2.5 | 2.8 | 2.0 | 3.8 | 1.8 | 95 | 96 | 88 | 96 | 95 |
| 28 | 1020.2 | 1018.6 | 1018.9 | 1017.8 | 1018.8 | 3.0 | 3.5 | 2.8 | 3.9 | 2.3 | 99 | 91 | 89 | 96 | 82 |
| 29 | 1023.6 | 1022.3 | 1021.9 | 1020.6 | 1021.1 | 3.2 | 4.3 | 2.6 | 5.0 | 2.9 | 92 | 93 | 87 | 86 | 85 |
| 30 | 1025.1 | 1023.1 | 1022.5 | 1020.3 | 1021.3 | 4.1 | 5.3 | 4.0 | 6.3 | 4.7 | 92 | 86 | 78 | 81 | 79 |
| 31 | 1022.8 | 1020.7 | 1019.4 | 1016.4 | 1017.5 | 5.0 | 7.8 | 5.8 | 9.7 | 6.3 | 86 | 78 | 73 | 77 | 74 |
| dec. I | 1025.9 | 1026.4 | 1026.7 | 1026.7 | 1026.7 | 3.1 | 4.0 | 2.4 | 4.1 | 2.9 | 91 | 84 | 88 | 88 | 92 |
| N | 1015.1 | 1014.8 | 1016.0 | 1016.3 | 1017.6 | 5.4 | 7.2 | 4.1 | 7.6 | 5.5 | 92 | 89 | 89 | 88 | 89 |
| dec. II | 1009.5 | 1008.2 | 1010.2 | 1009.7 | 1012.3 | 5.3 | 7.6 | 4.7 | 8.5 | 6.0 | 92 | 90 | 86 | 91 | 80 |
| N | 1016.2 | 1015.9 | 1017.0 | 1017.3 | 1018.4 | 5.5 | 7.2 | 4.1 | 7.5 | 5.2 | 91 | 88 | 87 | 86 | 87 |
| dec. III | 1006.2 | 1004.9 | 1005.2 | 1004.2 | 1005.6 | 4.1 | 5.5 | 4.0 | 6.9 | 4.3 | 93 | 90 | 85 | 90 | 84 |
| N | 1014.2 | 1013.8 | 1014.9 | 1015.1 | 1016.3 | 5.4 | 7.0 | 4.1 | 7.5 | 5.5 | 91 | 89 | 88 | 87 | 88 |
| maand | 1013.6 | 1012.9 | 1013.7 | 1013.2 | 1014.6 | 4.2 | 5.7 | 3.7 | 6.5 | 4.4 | 92 | 88 | 86 | 89 | 85 |
| N | 1015.1 | 1014.8 | 1016.0 | 1016.2 | 1017.4 | 5.5 | 7.1 | 4.1 | 7.5 | 5.3 | 91 | 88 | 88 | 87 | 88 |

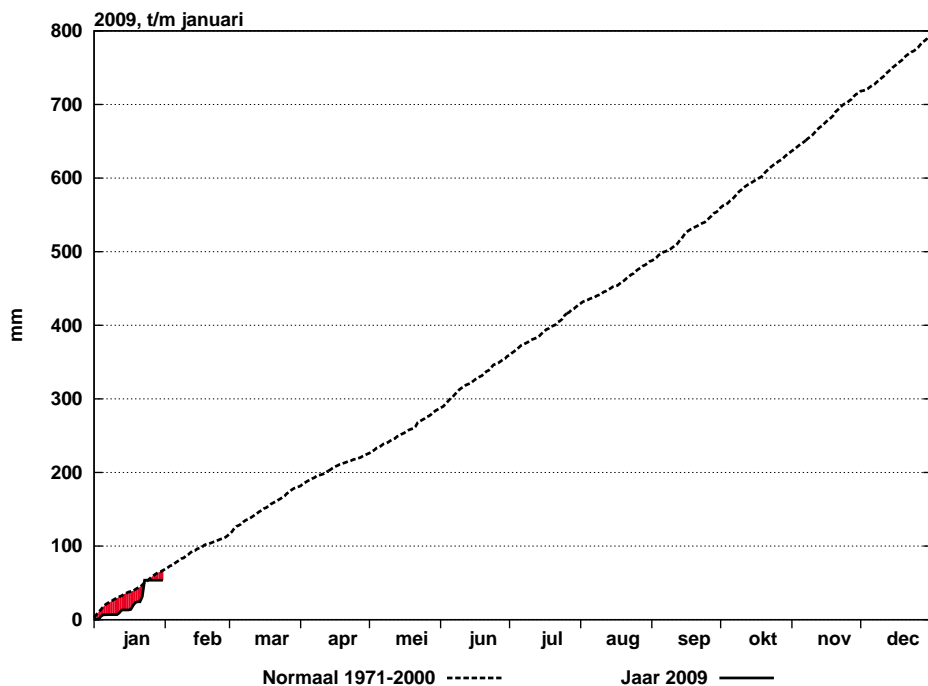
Etmaalgemiddelden en etmaalsommen

| Datum | Hoeveelheid neerslag (mm) | | | | | Duur neerslag (uren) | | | | | Referentiegwasverdamping (mm) | | | | |
|----------|---------------------------|---------|---------|------------|------------|----------------------|---------|---------|------------|------------|-------------------------------|---------|---------|------------|------------|
| | Eelde | De Kooy | De Bilt | Vlissingen | Maastricht | Eelde | De Kooy | De Bilt | Vlissingen | Maastricht | Eelde | De Kooy | De Bilt | Vlissingen | Maastricht |
| 1 | 0.0 | 0.4 | . | . | 0.0 | . | 0.4 | . | . | . | 0.1 | 0.1 | 0.1 | 0.1 | 0.1 |
| 2 | 0.0 | 0.5 | 0.5 | 0.0 | 0.0 | . | 0.5 | 0.6 | . | . | 0.3 | 0.4 | 0.1 | 0.2 | 0.1 |
| 3 | 0.8 | 0.0 | 0.0 | . | . | 4.6 | . | . | . | . | 0.2 | 0.2 | 0.1 | 0.5 | 0.5 |
| 4 | 6.8 | 9.5 | 4.0 | 0.2 | 0.2 | 14.2 | 13.7 | 10.4 | 0.7 | 1.7 | 0.1 | 0.1 | 0.1 | 0.2 | 0.1 |
| 5 | . | 0.6 | 2.1 | 3.4 | 7.2 | . | 1.1 | 3.8 | 4.8 | 10.8 | 0.3 | 0.4 | 0.3 | 0.2 | 0.1 |
| 6 | 0.0 | 0.0 | . | . | . | . | . | . | . | . | 0.5 | 0.4 | 0.4 | 0.4 | 0.3 |
| 7 | 0.7 | 0.8 | 0.2 | 0.1 | 0.0 | 1.6 | 1.9 | 1.1 | 0.2 | . | 0.1 | 0.3 | 0.2 | 0.2 | 0.1 |
| 8 | . | . | 0.0 | . | 0.0 | . | . | . | . | . | 0.2 | 0.4 | 0.1 | 0.2 | 0.2 |
| 9 | . | . | 0.0 | 0.0 | . | . | . | . | . | . | 0.0 | 0.1 | 0.3 | 0.2 | 0.3 |
| 10 | . | . | . | . | . | . | . | . | . | . | 0.4 | 0.4 | 0.4 | 0.4 | 0.4 |
| 11 | . | . | . | . | . | . | . | . | . | . | 0.3 | 0.4 | 0.5 | 0.4 | 0.6 |
| 12 | 1.4 | 3.5 | 2.4 | 1.7 | 0.0 | 1.9 | 5.1 | 3.6 | 2.3 | . | 0.3 | 0.2 | 0.3 | 0.3 | 0.4 |
| 13 | 1.4 | 0.1 | 4.0 | 2.1 | 2.8 | 2.7 | 0.3 | 8.3 | 3.7 | 9.9 | 0.0 | 0.1 | 0.1 | 0.1 | 0.1 |
| 14 | 2.8 | 0.5 | 0.0 | 0.0 | 0.1 | 2.3 | 0.9 | . | . | 0.7 | 0.1 | 0.4 | 0.3 | 0.2 | 0.1 |
| 15 | . | . | . | . | . | . | . | . | . | . | 0.3 | 0.2 | 0.5 | 0.4 | 0.6 |
| 16 | . | 0.1 | 0.0 | 0.0 | . | . | 0.3 | . | . | . | 0.3 | 0.2 | 0.2 | 0.2 | 0.3 |
| 17 | 0.4 | 1.1 | 0.7 | 1.2 | 0.7 | 1.9 | 2.0 | 1.5 | 1.9 | 1.6 | 0.1 | 0.2 | 0.1 | 0.3 | 0.4 |
| 18 | 4.4 | 9.6 | 5.4 | 2.7 | 5.3 | 3.8 | 7.2 | 3.0 | 3.5 | 3.5 | 0.1 | 0.1 | 0.1 | 0.4 | 0.1 |
| 19 | 8.1 | 11.8 | 4.1 | 5.7 | 1.2 | 5.9 | 8.0 | 5.8 | 6.7 | 1.8 | 0.1 | 0.1 | 0.1 | 0.2 | 0.3 |
| 20 | 0.2 | 2.1 | 0.9 | 1.5 | 0.6 | 0.2 | 2.0 | 0.7 | 2.4 | 0.6 | 0.2 | 0.4 | 0.4 | 0.6 | 0.6 |
| 21 | . | 0.0 | . | . | . | . | . | . | . | . | 0.2 | 0.2 | 0.3 | 0.4 | 0.3 |
| 22 | 4.1 | 8.3 | 6.8 | 3.8 | 1.7 | 8.2 | 9.4 | 10.0 | 8.9 | 2.7 | 0.2 | 0.1 | 0.1 | 0.1 | 0.3 |
| 23 | 13.2 | 15.0 | 22.6 | 13.0 | 14.0 | 17.2 | 13.2 | 16.1 | 11.1 | 13.5 | 0.1 | 0.1 | 0.1 | 0.1 | 0.1 |
| 24 | 0.6 | 0.0 | 0.0 | 0.0 | . | 1.4 | . | . | . | . | 0.2 | 0.5 | 0.3 | 0.4 | 0.4 |
| 25 | . | . | . | . | . | . | . | . | . | . | 0.5 | 0.5 | 0.5 | 0.4 | 0.6 |
| 26 | . | . | . | . | . | . | . | . | . | . | 0.5 | 0.5 | 0.5 | 0.3 | 0.5 |
| 27 | . | . | . | . | . | . | . | . | . | . | 0.2 | 0.1 | 0.5 | 0.4 | 0.5 |
| 28 | . | . | . | . | . | . | . | . | . | . | 0.2 | 0.6 | 0.6 | 0.2 | 0.7 |
| 29 | . | . | . | . | . | . | . | . | . | . | 0.5 | 0.4 | 0.7 | 0.6 | 0.7 |
| 30 | . | . | . | . | . | . | . | . | . | . | 0.5 | 0.6 | 0.7 | 0.7 | 0.7 |
| 31 | . | . | . | . | . | . | . | . | . | . | 0.5 | 0.7 | 0.7 | 0.7 | 0.7 |
| dec. I | 8.3 | 11.8 | 6.8 | 3.7 | 7.4 | 20.4 | 17.6 | 15.9 | 5.7 | 12.5 | 2.2 | 2.8 | 2.1 | 2.6 | 2.2 |
| N | 28.2 | 26.1 | 28.0 | 24.2 | 21.7 | 26.9 | 25.3 | 27.1 | 23.6 | 26.4 | 1.8 | 2.0 | 2.0 | 2.3 | 2.3 |
| dec. II | 18.7 | 28.8 | 17.5 | 14.9 | 10.7 | 18.7 | 25.8 | 22.9 | 20.5 | 18.1 | 1.8 | 2.3 | 2.6 | 3.1 | 3.5 |
| N | 15.1 | 14.8 | 15.1 | 12.5 | 15.5 | 16.3 | 16.3 | 16.6 | 15.2 | 17.6 | 2.3 | 2.6 | 2.6 | 3.1 | 3.0 |
| dec. III | 17.9 | 23.3 | 29.4 | 16.8 | 15.7 | 26.8 | 22.6 | 26.1 | 20.0 | 16.2 | 3.6 | 4.3 | 5.0 | 4.3 | 5.5 |
| N | 25.7 | 23.5 | 23.9 | 22.0 | 23.2 | 25.5 | 23.4 | 24.3 | 23.4 | 24.5 | 3.0 | 3.5 | 3.3 | 4.0 | 3.5 |
| maand | 44.9 | 63.9 | 53.7 | 35.4 | 33.8 | 65.9 | 66.0 | 64.9 | 46.2 | 46.8 | 7.6 | 9.4 | 9.7 | 10.0 | 11.2 |
| N | 69.0 | 64.4 | 67.0 | 58.7 | 60.5 | 68.8 | 65.1 | 68.0 | 62.1 | 68.6 | 7.2 | 8.2 | 7.9 | 9.5 | 8.8 |



Figuur 7: Geaccumuleerde temperatuur, De Bilt, 2009

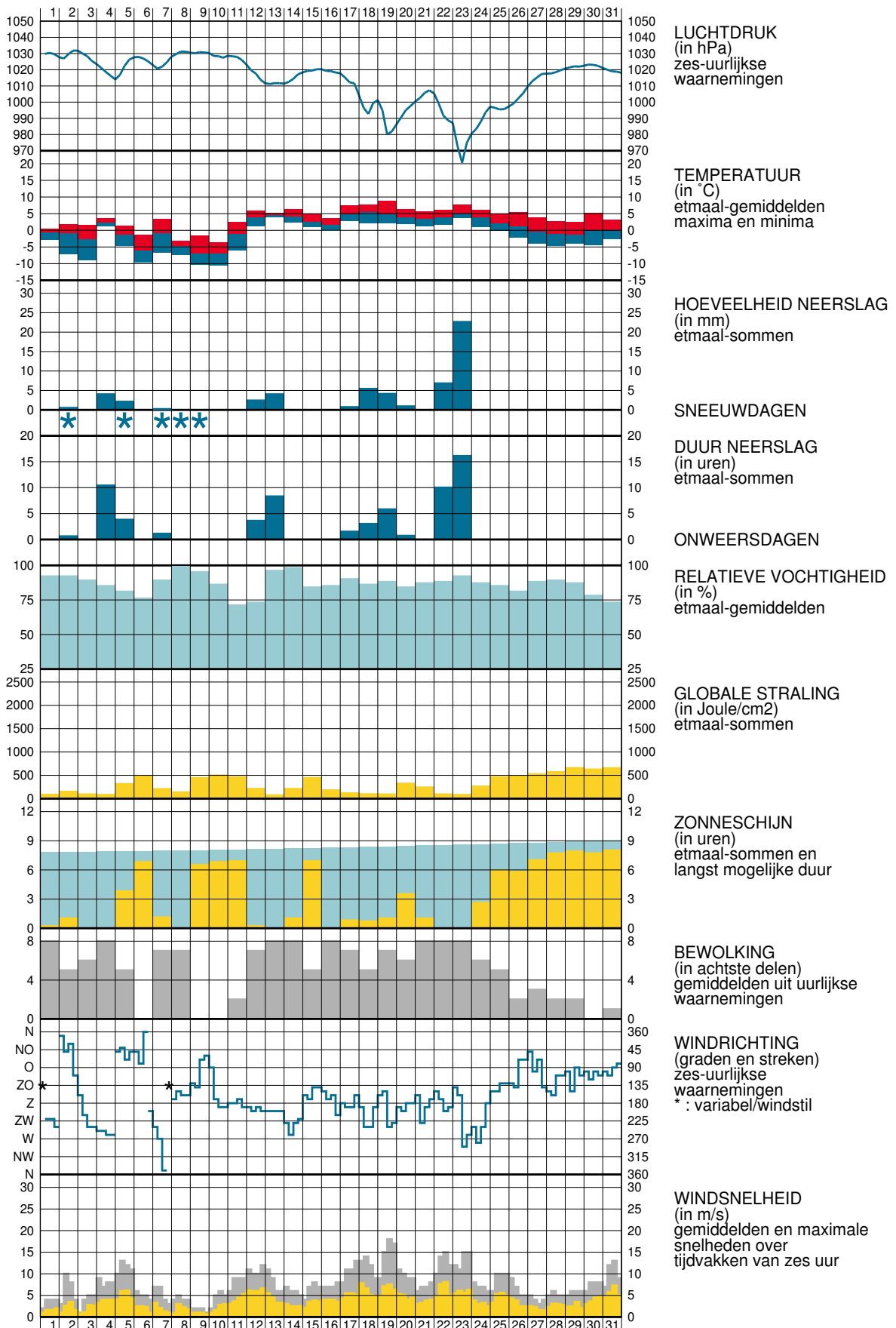
De getrokken lijn geeft de etmaalgemiddelde temperatuur van het actuele jaar, cumulatief weer. De stippellijn laat het langjarig gemiddelde (1971-2000) van de cumulatieve jaartemperatuur zien. Indien de actuele lijn zich onder die van het langjarig gemiddelde bevindt, is het jaar tot dan toe koud verlopen (blauw gearceerd). Als de actuele lijn zich erboven bevindt, verloopt het jaar tot dan toe warmer dan normaal (rood gearceerd).



Figuur 8: Geaccumuleerde neerslagsom, De Bilt, 2009

De getrokken lijn geeft de cumulatief gevallen hoeveelheid neerslag weer in het actuele jaar. De stippellijn laat het langjarig gemiddelde tijdvak 1971-2000 van de cumulatieve neerslag dagsommen zien. Indien de actuele lijn zich onder die van het langjarig gemiddelde bevindt, is het jaar tot dan toe droog verlopen (in rood aangegeven). Als de actuele lijn zich erboven bevindt, verloopt het jaar nat (blauw).

WAARNEMINGEN TE DE BILT





Verklaring

In het Maandoverzicht van het Weer in Nederland (MOW) zijn gegevens opgenomen van de meteorologische stations. De ligging van de stations is aangegeven in de bovenstaande kaart. Het MOW is 106 jaar lang uitgegeven als KNMI-periodiek en wordt sinds 2010 verspreid via internet (<http://www.knmi.nl/nederland-nu/klimatologie/gegevens/mow>). Een uitgebreide toelichting op het MOW is eveneens via internet beschikbaar. (http://cdn.knmi.nl/system/downloads/files/000/000/007/original/het_weer_in_nederland.pdf?1433758571)

De tijden in het MOW zijn uitgedrukt in universal time (UT). Hierin komt 12 uur overeen met 13 uur Midden Europese Tijd (MET) en met 14 uur Midden Europese zomertijd. Alle gegevens hebben betrekking op het etmaal 00-24 uur UT. De vermelde normalen zijn berekend uit de metingen in het tijdvak 1971-2000. Normalen van het “aantal dagen met” zijn berekend uit uurlijkse waarnemingen. Hierbij geldt dat het betreffende verschijnsel in tenminste één uurvak werd waargenomen. De globale straling is de som van de directe en diffuse zonnestraling op een horizontaal vlak en wordt weergegeven in Joule/cm^2 ($1 \text{ Joule}/\text{cm}^2 = 2,7772 \times 10^{-3} \text{ KWh}/\text{m}^2$).

De referentiegewas-verdamping E_r is een richtgetal voor de bepaling van de potentiële verdamping van gewassen. E_r wordt bepaald uit gegevens van globale straling en luchttemperatuur (berekeningwijze volgens Makkink). De aanduidingen I, II en III hebben betrekking op de decaden, waarbij I = dag 1 t/m 10, II = dag 11 t/m 20 en III = dag 21 t/m de laatste dag van de maand. M = de gehele maand.

| | | | |
|-------|---------------------|------|-------------------------|
| blank | : gegeven ontbreekt | A | : aantal |
| . | : waarde nul | STIL | : windstil/veranderlijk |
| 0 | : minder dan 0.5 | N | : normaal 1971-2000 |
| 0.0 | : minder dan 0.05 | | |

Het MOW is een uitgave van het Koninklijk Nederlands Meteorologisch Instituut
Postbus 201 3730 AE De Bilt
<http://www.knmi.nl/nederland-nu/klimatologie> klimaatdesk@knmi.nl