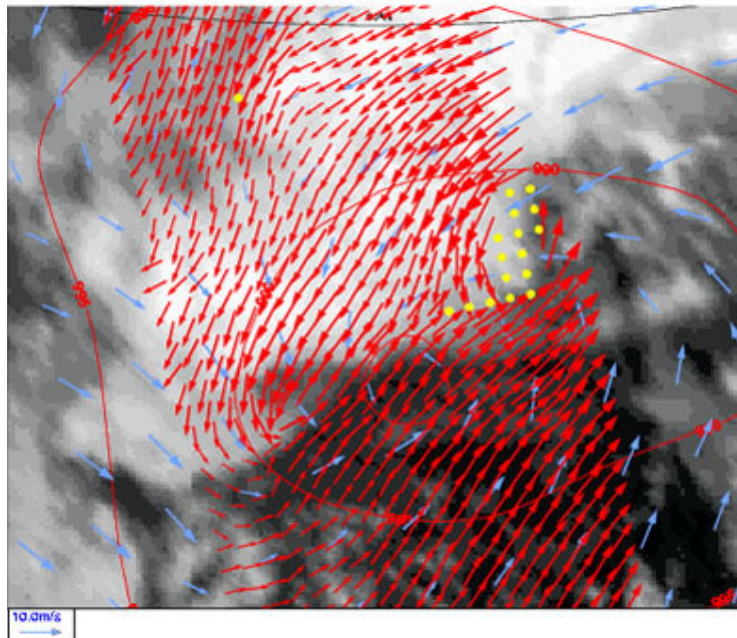




ERS Scatterometer Product User Manual



EUMETSAT Advanced Retransmission Service

**Version 1.0
January 2006**

DOCUMENT SIGNATURE TABLE

	Name	Date	Signature
Prepared by :	KNMI EARS Team	Jan. 2006	

DOCUMENTATION CHANGE RECORD

Issue / Revision	Date :	Change :	Description :
Version 0.9	Nov. 2005		Draft version.
Version 1.0	Jan. 2006	Minor	EUMETSAT comments incorporated

KNMI, De Bilt, the Netherlands

Reference: KNMI-publicatie ; 212

Cover illustration: on 23 April 2004 around midnight and west of Ireland, a complex low was developing. The red arrows show wind speeds up to 15 m/s and a cyclonic wind direction. One cyclonic centre is located surrounding the group of yellow spots, while another centre is located more to the southwest at the left side of the scatterometer swath. Between both cyclonic centres a line of shear flow is present (where the wind direction turns by 180 degrees) surrounded by wind speeds of 10 m/s strength. The blue arrows in the background represent a 3-hour forecast of the winds by the KNMI High-Resolution Limited Area Model (HiRLAM).

Even on this short forecast range, the HiRLAM model only depicts one cyclonic centre and no shear line at all. As background a METEOSAT Infrared image is shown in black and white. While this shows the supporting cloud structures associated with the ERS scatterometer winds, it does in itself not provide much information on the surface wind conditions. In the next 12 hours after midnight on 23 April, the winds strengthened and the depression central surface pressure dropped by more than 10 hPa to 974 hPa. In this case the timely available ERS scatterometer winds thus provide guidance on routing conditions to ships at sea.

See ESA press release on http://www.esa.int/esaEO/SEM0V177ESD_index_0.html

Contents

1.	Introduction.....	4
1.1.	Overview.....	4
1.2.	References	5
1.3.	Useful links	5
1.4.	Literature.....	6
2.	The ERS scatterometer instrument.....	7
3.	Algorithms	8
3.1.	Wind definition	8
3.1.1.	Geophysical model function	9
3.2.	Wind retrieval.....	9
3.2.1.	Ambiguity removal.....	10
3.2.2.	Quality control	10
4.	Processing scheme	11
4.1.	Node triplet completion	11
4.2.	NWP collocation.....	11
4.3.	Validation	11
4.4.	Quality control and monitoring.....	12
5.	Dissemination	13
6.	Data description.....	14
6.1.	Wind product characteristics	14
6.2.	File formats	15
7.	Data quality.....	17
7.1.	Accuracy	17
7.2.	Reliability and data use	17
7.3.	Ambiguity selection	17
8.	Glossary	18

Preface

The distribution of ERS-2 scatterometer winds in the framework of the EARS (EUMETSAT Advance Retransmission Service) has only been made possible through a concerted effort.

The ERS-2 scatterometer data is provided by ESA to KNMI in the framework of the Cat-1 project Nr. 1105 of 2001. KNMI is considered Principal Investigator in this project and registered users of the KNMI wind product are considered as Co-Principal Investigators; their names will be provided to ESA.

The KNMI wind processing and dissemination of the ERS-2 scatterometer winds on EUMETCast (EUMETSAT's Digital Video Broadcast Data Distribution System) is funded by EUMETSAT.

The processor software was developed in a coordinated effort between EUMETSAT, ESA, and KNMI.

1. Introduction

1.1. Overview

The EUMETSAT Advanced Retransmission Service (EARS) was established to provide the meteorological community with regional data with a timeliness adequate for nowcasting and regional numerical weather prediction. Currently, ATOVS and AVHRR data from NOAA satellites are collected by several HRPT reception stations, processed and distributed on EUMETCast. After the MetOp launch, products generated from HRPT data from this satellite will be also disseminated. In particular, the EARS will be complemented with a Pilot ASCAT service. The targeted EARS ASCAT product is a regional-coverage Level 2 wind product on the ASCAT swath grid, in BUFR format, for distribution on EUMETCast. The targeted timeliness is 30 minutes from data acquisition.

KNMI will be involved in the EARS ASCAT service as the centre where the Level 1b to Level 2 processing will be carried out. As a preparation for the EARS ASCAT service, KNMI has established and operates a demonstration system based on the dissemination via EUMETCast of the current regional ERS-SCAT KNMI value-added wind product. This document is the Product User Manual to this product.

The scatterometer is an instrument that provides information on the wind field near the ocean surface, and scatterometry is the knowledge of extracting this information from the instrument's output. Space-based scatterometry has become of great benefit to meteorology and climate in the past years, see e.g. [Ref 1].

KNMI has a long experience in scatterometer processing and is developing generic software for this purpose. Processing systems have been developed for the ERS, NSCAT and SeaWinds scatterometers, and will be adopted for ASCAT. Scatterometer processing software is developed in the EUMETSAT Numerical Weather Prediction Satellite Application Facility (NWP SAF), whereas wind processing is performed (semi-)operationally in the Ocean and Sea Ice SAF (OSI SAF).

ESA makes available a near real-time Level 2 scatterometer wind product from the ERS-2 satellite through the Regional Meteorological Data Communication Network (RMDCN). This product is used as basis for further processing at KNMI. Since the loss of the on-board tape device in 2001, data can be acquired only when the satellite flies in sight of a ground station. ESA deploys a number of ground stations, mainly in the North Atlantic Region. KNMI combines data from all ground stations and produces one unique data set without overlap between different ground stations. In case of overlap, data from different ground stations are combined to obtain a result as complete as possible.

Hence, contrary to the ESA product, the KNMI wind product offers completeness with best timeliness and no redundant data. Moreover, the KNMI quality control ensures that only reliable data will be made available.

The KNMI products are delivered on request through the KNMI FTP server to all users and through the EUMETCast system. See also <http://www.knmi.nl/scatterometer/> for real-time graphical examples of the products and up-to-date information and documentation.

This user manual outlines user information for the KNMI products based on the ERS scatterometer. Section 2 presents a brief description of the ERS SCAT instrument, section 3 the processing algorithms, and section 4 gives an overview of the data processing configuration. Section 5 provides details on how to access the products. Detailed information on the file content and format is given in section 6, while in section 7 the product quality is elaborated.

1.2. References

- [Ref-1] Isaksen, L., and A. Stoffelen, 2000, "ERS-Scatterometer Wind Data Impact on ECMWF's Tropical Cyclone Forecasts", IEEE-Transactions on Geoscience and Remote Sensing (special issue on Emerging Scatterometer Applications) **38** (4), pp. 1885-1892
- [Ref-2] Valenzuela, G. R., Theories for the interaction of electromagnetic and ocean waves - a review, *Bound. Layer Meteor.*, **13**, 612-685, 1978
- [Ref-3] Thesis "Scatterometry" by Ad Stoffelen, 1998, available on <http://www.library.uu.nl/digiarchief/dip/diss/01840669/inhoud.htm>
- [Ref-4] Hersbach, H, CMOD5 - An improved geophysical model function for ERS C-band scatterometry, ECMWF Technical Memorandum no. 395, 2003
- [Ref-5] Donelan, M. A., and W. J. Pierson, Radar scattering and equilibrium ranges in wind-generated waves with application to scatterometry, *J. Geophys. Res.*, **92**, 4971-5029, 1987
- [Ref-6] Donnelly, William J., James R. Carswell, and Robert E. McIntosh, Revised ocean backscatter at C and Ku band under high wind conditions, *J. Geophys. Res.*, **104**, 11,485-11,497, 1999
- [Ref-7] Pierson, W.J., Probabilities and statistics for backscatter estimates obtained by a scatterometer, *J. Geophys. Res.*, **94**, 9743-9759, 1989; correction in *J. Geophys. Res.*, **95**, 809, 1990
- [Ref-8] Stoffelen, Ad, Siebren de Haan, Yves Quilfen, and Harald Schyberg, ERS Scatterometer Ambiguity Removal Comparison, OSI SAF report, 2002, available on http://www.knmi.nl/scatterometer/scat_and_ascats/pdf/SAFOSI_W_ARcomparison.pdf
- [Ref-9] Portabella, M., A. Stoffelen, EUMETSAT fellowship report, 2002
- [Ref-10] de Vries, J, Stoffelen, A and Beysens, J, Ambiguity Removal and Product Monitoring for SeaWinds, NWP SAF report NWPSAF_KN_TR_001
- [Ref-11] ERS PRODUCTS – WMO FM94 BUFR FORMAT, ER-IS-UKM-GS-0001, Version 4, Issue 2, 16 February 2001

1.3. Useful links

KNMI scatterometer web site: <http://www.knmi.nl/scatterometer/>

- ERS visual products: http://www.knmi.nl/scatterometer/ers_prod/

- ERS documentation: http://www.knmi.nl/scatterometer/scat_and_ascats/

Information on EARS and EUMETCast: <http://www.eumetsat.int/>

O&SI SAF wind product documentation on <http://www.osi-saf.org/>:

1. Scientific documents:

- 2D Variational Ambiguity Removal

Technical documents

- Science Plan

- OSI SAF User Requirements Document

- OSI SAF Project Plan

- OSI SAF Report on Algorithm Development and Prototyping Activities

- OSI SAF top-level Configuration Management Plan
- OSI SAF Output Products Format Document
- OSI SAF Software Requirements Document
- ICD for the wind production of the OSI SAF
- SVVP for the wind production of the OSI SAF

NWP SAF website: <http://www.metoffice.gov.uk/research/interproj/nwpsaf/index.html>

ESA ERS Documentation: <http://earth.esa.int/ers/eeo4.144/> and
<http://earth.esa.int/pcs/ers/scatt/articles/>

1.4. Literature

1. Figa, J., and A. Stoffelen, 2000, "On the Assimilation of Ku-Band Scatterometer Winds for Weather Analysis and Forecasting", IEEE-Transactions on Geoscience and Remote Sensing (special issue on Emerging Scatterometer Applications) **38** (4), pp. 1893-1902
2. Graham, R., D. Anderson, A. Hollingsworth and H. Böttger, Evaluation of ERS-1 wind extraction and ambiguity removal algorithms: meteorological and statistical evaluation, ECMWF report, ECMWF, Reading, England, 1989
3. Mastenbroek, Kees, "Wind-Wave Interaction", thesis at the Delft University of Technology, Delft, the Netherlands, 12 December 1996
4. Stoffelen, Ad, "A generic approach for assimilating scatterometer observations" ECMWF seminar 2000
5. Thesis "Wind Field Retrieval from Satellite radar systems" by Marcos Portabella, available on http://www.knmi.nl/scatterometer/seawinds/pdf/PhD_thesis.pdf

2. The ERS scatterometer instrument

The Active Microwave Instrument (AMI) is one of the instruments carried on-board the first European Remote Sensing Satellites (ERS-1 and ERS-2) launched by the European Space Agency on 17 July 1991 and 20 April 1995.

The AMI incorporates two separate radars, a Synthetic-Aperture Radar (SAR) operating in image or wave mode, and a Wind Scatterometer. The Earth's surface is illuminated by four antennas and backscattered energy is received either to derive data on wind fields and wave spectra, or to produce high resolution images. The operational requirements are such that each mode needs to be operated exclusively, but the Wind and Wave Modes are also capable of interleaved operation, in so-called 'Wind/Wave Mode'.

The Wind Mode uses three antennas to generate radar beams looking 45 degrees forward, sideways, and 45 degrees backwards with respect to the satellite's flight direction. These beams illuminate a 500 km-wide swath as the satellite moves along its orbit, and each provide measurements of radar backscatter from the sea surface on a 25 km grid. The result is three independent backscatter measurements for each grid point, obtained using the three different viewing directions and separated by a short time delay. As the backscatter depends on the sea surface roughness as a function of the wind speed and direction at the ocean surface, it is possible to calculate the surface wind speed and direction by using these 'triplets' within a mathematical model.

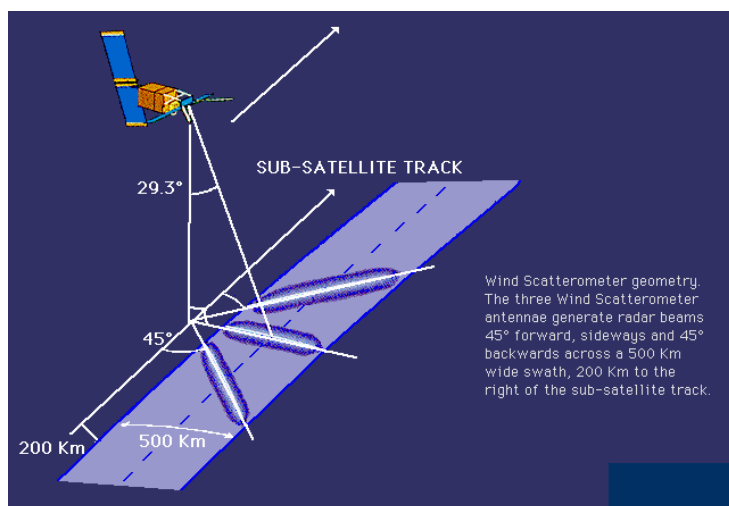


Figure 1: ERS wind scatterometer geometry (source: ESA web site).

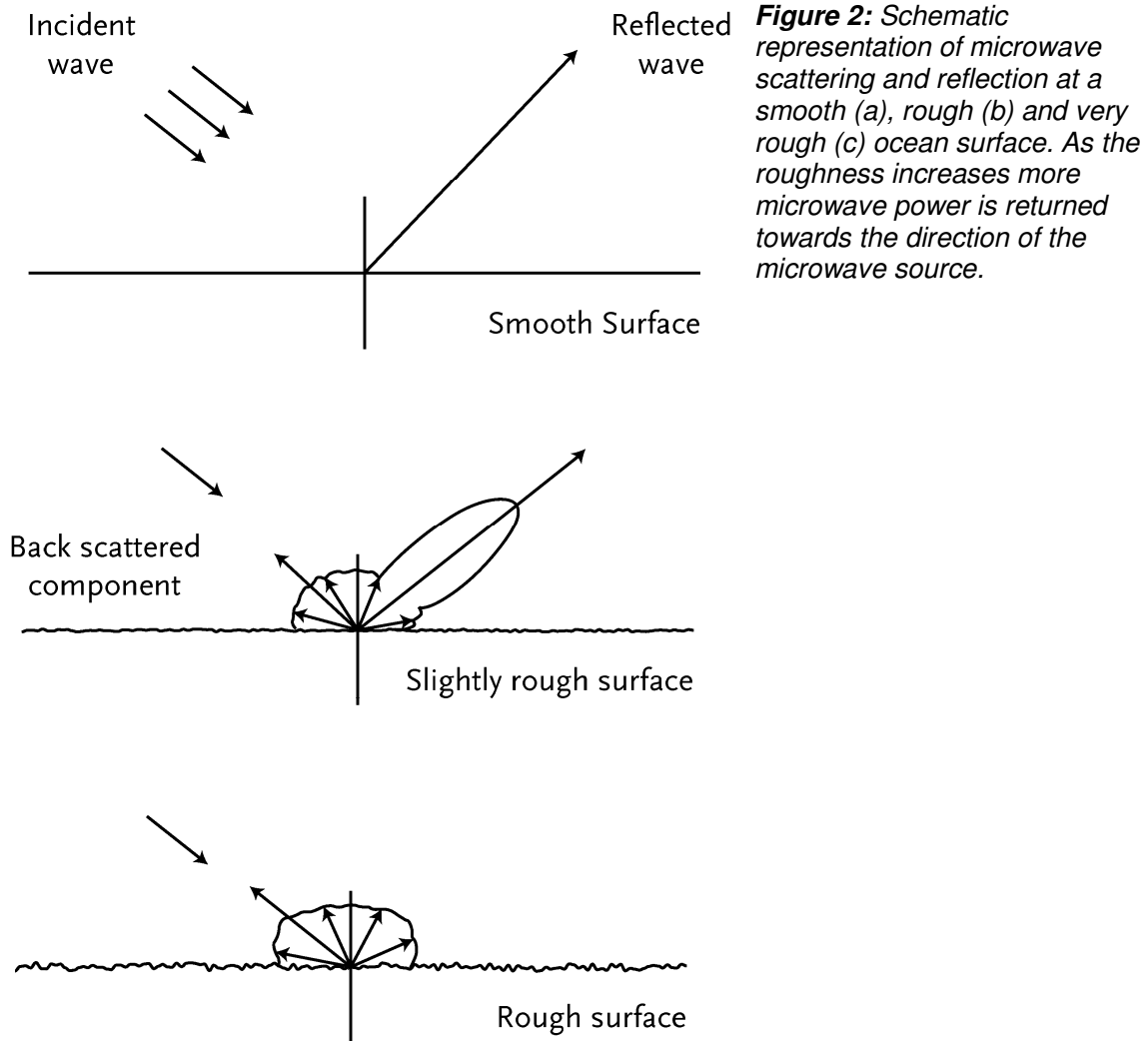
The instrument operates at a frequency of 5.3 GHz (C-band), which makes it rather insensitive to rain.

ERS-1 has been operational from 1991 to 2000 and ERS-2 is still working, although since 2001 there have been problems with the satellite gyroscopes and the on-board tape recorder. Since August 2003 ESA distributes the Wind Scatterometer data from ERS-2 within the visibility of ESA ground stations over Europe, North Atlantic, the Arctic and North America. The list of ground stations was extended since then with Beijing (China) and McMurdo (Antarctica). The station coverage can be seen in the latest ERS scatterometer cycle report (http://earth.esa.int/pcs/ers/scatt/reports/pcs_cyclic/).

3. Algorithms

Scatterometry was developed heuristically. It was found experimentally that the sensitivity to wind speed and direction describe well the changes in backscatter over the ocean at moderate incidence angles due to changes in surface roughness, as depicted in figure 2 [Ref-2]. In return, backscatter measurements can be used to determine the wind speed and wind direction in a Wind Vector Cell (WVC).

A schematic illustration of the processing is given in figure 3. After defining the wind output and motivating the Geophysical Model Function that is used, the algorithms developed at KNMI are described.



3.1. Wind definition

A scatterometer measurement relates to the ocean surface roughness (see figure 2), while the scatterometer product is represented by the wind at 10m height over a WVC. It is important to realize that in the approach followed here the radar backscatter measurement σ^0 is related to the wind at 10 meter height above the ocean surface, simply because such measurements are widely available for validation. This means that any effect that relates to the mean wind vector at 10 meter height is incorporated in the backscatter-to-wind relationship. As such, air stability, the appearance of surface slicks, and the amplitude of

gravity or longer ocean waves, depend to some degree on the strength of the wind and may, to the same degree, be fitted by a geophysical model function, GMF ([Ref-3]; Chapter I). Stoffelen ([Ref-3]; Chapter IV) discusses a unique method to determine the accuracy of scatterometer, buoy, and NWP model winds.

3.1.1. Geophysical model function

For the KNMI ERS wind product the CMOD5 geophysical model function (GMF) is used [Ref-4]. This model function enables the calculation of wind speeds meeting the product requirements between 0 and 25 m/s.

At low wind speeds the wind direction and speed may vary considerably within the WVC. Locally, below a speed of roughly 2 ms^{-1} calm areas are present where little or no backscatter occurs, perhaps further extended in the presence of natural slicks that increase the water surface tension [Ref-5]. However, given the variability of the wind within a footprint area of 25 km it is, even in the case of zero mean vector wind, very unlikely that there are no patches with roughness in the footprint. As the mean vector wind increases, the probability of a calm patch will quickly decrease, and the mean microwave backscatter will increase. Also, natural slicks quickly disappear as the wind speed increases, and as such the occurrence of these is correlated to the amplitude of the mean vector wind over the footprint, as modelled by the GMF. Low scatterometer wind speeds are thus providing useful information.

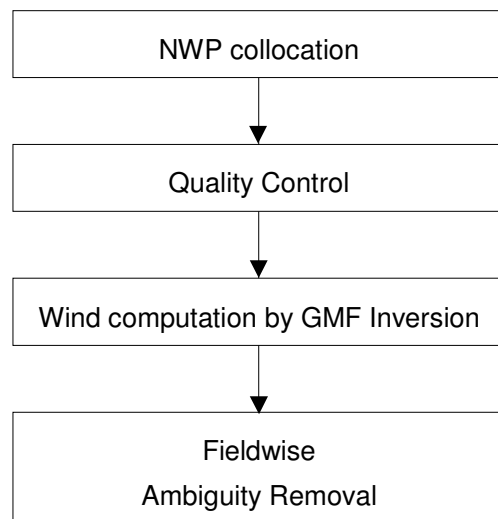


Figure 3: Overview of wind retrieval algorithm

At high wind speeds wave breaking will further intensify, causing air bubbles, foam and spray at the ocean surface, and a more and more complicated ocean topography. Although theoretically not obvious, it is empirically found that σ^0 keeps increasing for increasing wind speed from 25 m/s to 40 m/s, and that a useful wind direction dependency remains [Ref-6], albeit gradually weakening.

3.2. Wind retrieval

The GMF has two unknowns, namely wind speed and wind direction, so, if more than two backscatter measurements are available then these two unknowns may be estimated using a maximum-likelihood estimator (MLE) as the objective function for determining wind vector solutions [Ref-7]. The MLE is defined by ([Ref-3]; Chapter II)

$$J = (z_{oi} - z_m(u, \chi_i))^2$$

where $z = (\sigma^0)^{0.625}$ are the transformed backscatter data, z_{oi} are the backscatter measurements, $z_m(u, \chi_i)$ are the model backscatter values corresponding to the measurements. The local minima of J correspond to wind vector solutions. The three independent measurements (fore, mid and aft beam) well sample the azimuth variation of the GMF in order to resolve the wind direction, albeit ambiguously.

3.2.1. Ambiguity removal

ERS scatterometer winds have a multiple ambiguity and there are up to two wind solutions in each WVC on the earth's surface. These ambiguities are removed by applying constraints on the spatial characteristics of the output wind field, such as on rotation and divergence. Several ambiguity removal (AR) schemes were evaluated for ERS data [Ref-8]. In the OSI SAF Development Phase some schemes that were developed for the SCAT were compared. In addition to the subjective comparison of AR schemes, a method for the objective comparison of AR performance among the different schemes was used. In [Ref-8] it is shown that this way of comparison is effective to evaluate the shortcomings of AR schemes, but also reveals a more general way forward to improve AR, which is followed up by tuning 2D-VAR. For ERS this tuned version of 2D-VAR is used.

3.2.2. Quality control

Since the scatterometer wind retrieval problem is over determined, this opens up the possibility of quality control (QC) by checking the inversion residual J . If J is normalised by the expected isotropic error variance then it is in theory inversely proportional to the log probability that a node is affected solely by a uniform wind. If $Var(\sigma_m)_i = (K_{pi}^2 \sigma_{oi}^2)$ are the measurement variances then the norm for the inversion residual is $\sqrt{3}$ times the RMS of $(Var(\sigma_m)_i)^{0.625}$ (Stoffelen, 1998). Generally this normalised MLE is substantial and, as a consequence, the inferred probability low, when there is substantial wind or sea state variability within the cell.

As such, Stoffelen [Ref-3] and Portabella and Stoffelen [Ref-9] found that the inversion residual is well capable of removing cases with extreme variability (at fronts or centres of lows), or with other geophysical variables affecting the radar backscatter.

4. Processing scheme

KNMI has an operational processing chain running in near real-time with ERS-2 data, including visualisation on the Internet. This processor is based on the NWP SAF software and runs in the KNMI operational environment. The processing includes monitoring and archiving functionalities. A global overview of the modules of the ERS scatterometer processor is given below.

4.1. Node triplet completion

ERS-SCAT data is acquired at ESA stations, processed locally up to level 1b (and 2) and then transmitted to ESRIN in Rome, from where it is distributed to all users via the GTS. The station coverage can be seen in the latest ERS scatterometer cycle report (http://earth.esa.int/pcs/ers/scatt/reports/pcs_cyclic/). The timeliness of the arrival of input data from different stations ranges from 20 to 100 min, depending on the link between the stations and the Rome node at ESRIN.

The processing at KNMI includes a step to remove product overlaps between different stations. It is based on BUFR segments, which for ERS-SCAT contain 19 rows (each row containing in turn 19 nodes). This is equivalent to a 500 km x 500 km swath and approximately 1.5 minutes. Each node is processed to generate winds only once, as soon as the triplet of fore, mid and aft beam information is complete. A triplet can be completed with data coming from more than one station. If input data for that node is received after the wind node has been generated (i.e., duplicated input data from another station) it is discarded. Node grids from different stations are not synchronised. If a triplet is completed with σ^0 s from more than one station, the node position is fixed to the latest received product, and the node is filled with the closest σ^0 values available from all the stations and located within a distance of half a cell. No interpolation is performed because tests at KNMI have shown that the improvement in the wind quality is not significant.

4.2. NWP collocation

KNMI receives NWP model data from ECMWF twice a day through the RMDCN.

NWP model sea surface temperature and land-sea mask data are used to provide information about possible ice or land presence in the WVCs. WVCs with a sea surface temperature below 273.16 K (0 °C) are assumed to be covered with ice and no wind information is calculated. Land presence within each WVC is determined by using the land-sea mask available from the model data. The weighted mean value of the land fractions of all model grid points within 80 km of the WVC centre is calculated and if this mean value exceeds a threshold of 0.02, no wind retrieval is performed. Our processing uses stricter limits for ice and land presence than the ESA input product, resulting in less WVCs containing wind data (but of a better quality).

NWP forecast wind data are necessary in the ambiguity removal step of the processing. Wind forecasts are available twice a day (00 and 12 GMT analyse time) with forecast time steps of +12h, +15h, ..., +36h. The model wind data are averaged with respect to time and location and put into the appendix part of each WVC (see section 6.2).

4.3. Validation

Each step in the processing is validated separately by a quality control and monitoring scheme. The product validation step is controlled by visual inspection, and a statistical analysis is performed to control the validation steps. The inversion step is controlled in the same way. For ambiguity removal schemes an objective scheme exists that relies on initialisation with a one-day lead NWP forecast and validation of the ambiguity selection

against NWP analyses, as in [Ref-8]. Moreover, de Vries et al [Ref-10] describe subjective comparison of the 2D-VAR and PreScat schemes by routine operational meteorologists.

4.4. Quality control and monitoring

In each WVC, the σ^0 data is checked for quality and completeness and the inversion residual (see section 3.2.2) is checked. Degraded WVCs are flagged, see section 6.2 for more details.

The quality of the delivered products is controlled through an ad hoc visual examination of the graphical products and the automatic production of control parameters.

The examination of the products is done at KNMI by experts. Specific tools have been developed to help this analysis. User queries obviously lead to the inspection of suspect products. The ad hoc and user queried inspections are used for quality assurance.

An information file is made for each product. The content of the file is identical whatever the product and results from a compilation of all the global information concerning this product. From these files, various graphs are produced to visually display the confidence levels of the products and their evolution with time. These graphs are available only on the internal KNMI web. Data quality is also available to the users within the products, see section 6 and 7 for a description of quality flags.

5. Dissemination

The ERS BUFR products are disseminated on EUMETCast. Please consult <http://www.eumetsat.int/>, under 'Access to Data' for more information on EUMETCast dissemination and how to receive these and other EUMETSAT meteorological satellite products.

The products are also made available on a password-protected ftp site. This password is provided to new users by Email request. Please send your requests to scat@knmi.nl.

6. Data description

6.1. Wind product characteristics

Physical definition

Horizontal wind vector at 10m height.

Units and range

Wind speed is measured in m/s and wind direction in meteorological (WMO) convention relative to North: 0 degrees corresponds to a wind flowing to the South with a clockwise increment. The wind speed range is from 0-50 m/s, but wind speeds over 25 m/s are generally not reliable [Ref-6].

Input satellite data

ERS SCAT BUFR data from ESA are described in their user manual [Ref-11]. ERS-SCAT data is acquired locally at ESA stations, processed locally up to level 1b (and level 2) and then transmitted to ESRIN in Rome, from where it is distributed to all users via the GTS. The product contains geolocated measurement triplets on a satellite swath grid of 25 km size.

Geographical definition

The ERS-2 satellite flies in a near-polar sun synchronous orbit at 98 degrees inclination at approximately 800 km orbit height. The satellite swath is located to the right of the satellite ground track. The swath width is 19 25-km size WVCs, corresponding to 500 km. Products are organised in messages of 19 X 19 WVCs.

Coverage

Data is available only when the satellite is in sight of a ground station. Most ground stations are in the North Atlantic region. Actual coverage is available on the KNMI ERS-2 product visualisation website (see http://www.knmi.nl/scatterometer/ers_prod/).

Output product

The input product in BUFR is processed into a BUFR output product including a unique wind solution (chosen), its corresponding ambiguous wind solution and quality information (distance to cone, quality flag).

Delivery time

A wind product is available for distribution within 10 minutes after the input product reception at KNMI. The delivery time between acquisition of the data and reception at KNMI ranges from 20 to 100 minutes, depending on the ground station and network speed. In practice, approximately 40% of the KNMI output data is available within 60 minutes after acquisition and approximately 90% of the data is available after 100 minutes.

Expected accuracy

The expected accuracy is defined as the expected bias and standard deviation of the primary calculations. The accuracy is validated against in situ wind measurements from buoys, platforms, or ship, and against NWP data. Even better, the errors of all NWP model winds, in situ data, and scatterometer winds are computed in a triple collocation exercise [Ref-3]. The performance is pretty constant over the globe and depends mainly on the sub footprint wind variability. The performance of the products issued by KNMI is characterised by a wind component RMS error smaller than 2 m/s and a bias of less than 0.5 m/s in wind speed.

6.2. File formats

Wind products are in BUFR. A complete description of BUFR can be found in WMO publication No 306, Manual on Codes. The graphical displays of the wind products are available and explained on the web: http://www.knmi.nl/scatterometer/ers_prod/.

The file name convention is ISX<YYYYMMDDHHMMSS>.inv, where ISX is a fixed prefix, the date time group is the time of sensing of the data and .inv is a fixed postfix.

An example of a file name is: ISX20051130100840.inv.

The KNMI wind product is stored in the same BUFR format as described in the ERS Products BUFR format manual [Ref-11], but for each WVC a local appendix is added to the 44 ESA descriptors.

Some alterations are made to the ESA part of the product:

- In the BUFR header the value for “generating centre” is set to 99, representing KNMI.
- The beam information (descriptors 27-31 for fore beam, 32-36 for mid beam and 37-41 for aft beam) may have been changed (copied from another message) as a result of triplet completion.
- For WVCs that have been processed already, the bits 1, 2 and 3 of the ESA UWI Product Confidence flag are set to 1 (i.e. the WVC is marked to have no fore, mid and aft beam calculation performed). This flagging removes product overlaps from data of different ground stations.

Note: the data acquisition date and time are in descriptors 19-24, not in 6-11.

The KNMI appendix contains the following descriptors:

Nr	Descriptor	Name	Scale	Reference	Width	Units
45	001031	IDENTIFICATION OF ORIGINATING/GENERATING CENTRE	0	0	16	-
46	001032	GENERATING APPLICATION	0	0	8	-
47	011012	WIND SPEED AT 10 M	1	0	12	m/s
48	011011	WIND DIRECTION AT 10 M	0	0	9	degree
49	021226*	BACKSCATTER DISTANCE	1	-4096	13	-
50	011012	WIND SPEED AT 10 M	1	0	12	m/s
51	011011	WIND DIRECTION AT 10 M	0	0	9	degree
52	021226*	BACKSCATTER DISTANCE	1	-4096	13	-
53	021225*	PRESCAT PRODUCT CONFIDENCE	0	0	6	flag table
54	033213*	1D VAR RADIANCE COST	1	-1000	11	-
55	001032	GENERATING APPLICATION	0	0	8	-
56	011012	WIND SPEED AT 10 M	1	0	12	m/s
57	011011	WIND DIRECTION AT 10 M	0	0	9	degree
58	001193*	SIGMA_0 SIMULATION METHOD	0	0	4	code table
59	021062	BACKSCATTER	2	-5000	13	dB

Nr	Descriptor	Name	Scale	Reference	Width	Units
60	021062	BACKSCATTER	2	-5000	13	dB
61	021062	BACKSCATTER	2	-5000	13	dB

Descriptors marked with an asterix (*) are local descriptors for ECMWF and KNMI. Example BUFR tables containing these local descriptors are available at KNMI and are also part of the ECMWF BUFR decoding software available at <http://www.ecmwf.int/>.

Field 46 contains a fixed value of 99 (De Bilt) and field 47 contains a fixed value of 100. The selected wind solution is put into fields 47-49, whereas the second ambiguity is put into fields 50-52.

The PRESCAT product confidence flag (field 53) contains the following bit settings: (BUFR bits)

Bit	Meaning when set
1	Distance to cone too big, wind untouched
2	Low speed, bogus winds as solution
3	1 solution, low speed, bogus 2nd solution added
4	1 solution, high speed, no wind solution
5	High speed, no wind solution
all 6	Missing value, cell did not pass Quality Control

Field 54 contains a skill value ([Ref-3]; Chapter V).

Field 55 contains the value 91 which means that first guess model winds are used for ambiguity removal. The interpolated model winds are in the fields 56-57. Field 58 contains the value 10 for the σ^0 simulation method, denoting that no ancillary ocean calibration has been applied. The fields 59-61 contain calibrated σ^0 values of the three beams which are, for this product, the same as the values in the input product.

7. Data quality

7.1. Accuracy

As introduced in section 6.1, the accuracy is better than 2 m/s in wind component RMS with a bias of less than 0.5 m/s in wind speed, see [Ref-3].

7.2. Reliability and data use

For global coverage products, it is possible to generate a product monitoring flag, based on a multi-step check. If in one product the number of WVC Quality Control rejections, the mean residual, or the wind speed bias with respect to the NWP background is above certain threshold values, then the monitoring event flag is raised since the product is suspicious. The threshold values are based on evaluation of the product statistics over a long period [Ref-10]. Because of the granular nature of the EARS product, where files of approximately 1 minute are generated and disseminated in real-time, this mechanism raises problems if there are not enough data in one regional pass for a statistically valid check. The multi-step monitoring check is sensitive to noise which is larger when mean values are calculated over fewer WVCs. If, accordingly, the thresholds are set high, many bad products will pass the check. On the other hand, if the threshold values are set too low, too many false alarms will be raised. This problem can be solved probably by evaluating not only the data of the last processed regional pass, but by evaluating the last 60 or 70 minutes of data present, although originating from typically 4 or 5 regional passes of 15 minutes. In case of instrument degradation or other problems, the monitoring event flag will be raised with some delay, inherent to the discontinuous nature of the data stream. Sensitivity tests will provide guidance on this issue. It is planned to implement the monitoring event flag in a future version of the EARS product.

Since the quality of backscatter measurements is somewhat insufficient to provide good-quality ERS scatterometer winds at WVCs 1 and 2, we recommend to accept these winds with degraded confidence. For use in NWP these winds should be disregarded altogether. WVCs 3-19 are of uniform quality and fulfil the requirements as specified in the OSI SAF User Requirements Document.

7.3. Ambiguity selection

A version of 2D-VAR is used with minimal regional performance differences [Ref-10]. This improved version was obtained after taking into account the findings of [Ref-8]. A variational QC step is performed to reject a few WVCs, which are in meteorological unbalance with their neighbours. This rejection rate, often called gross error rate, peaks at the inside swath and falls off quickly in the middle swath. Currently, the variational QC flagged WVCs are not flagged in the output product since there is no room for this flag in the BUFR product format. In the future, when the ERS wind product will be disseminated in the ASCAT BUFR format, it will be possible to flag these WVCs in the output product.

8. Glossary

AR	Ambiguity Removal
ASCAT	Advanced Scatterometer
BUFR	Binary Universal Format Representation
EPS	Eumetsat Polar System
ERS	European Remote-Sensing Satellite
EUMETCast	EUMETSAT's Digital Video Broadcast Data Distribution System
HDF	Hierarchical Data Format
JPL	Jet Propulsion Laboratory (NASA)
KNMI	Royal Netherlands Meteorological Institute
MetOp	Meteorological Operational satellite
NASA	National (US) Air and Space Agency
NOAA	National (US) Oceanic and Atmospheric Administration
NSCAT	NASA Scatterometer
NWP	Numerical Weather Prediction
OSI SAF	Ocean and Sea Ice SAF
QC	Quality Control
QuikSCAT	US dedicated scatterometer mission
RMDCN	Regional Meteorological Data Communication Network
SAF	Satellite Application Facility
SeaWinds	US scatterometer on-board QuikSCAT platform
SOS	Scatterometer Ocean Stress
SST	Sea Surface Temperature
SVVP	Software Verification and Validation Plan
U	West-to-east wind component
V	South-to-north wind component
WVC	Wind Vector Cell