

Validation of OMI tropospheric NO₂ observations during INTEX-B and application to constrain NO_x emissions over the eastern United States and Mexico

K.F. Boersma^{a,*}, D.J. Jacob^a, E.J. Bucsela^b, A.E. Perring^c, R. Dirksen^d,
R.J. van der A^d, R.M. Yantosca^a, R.J. Park^a, M.O. Wenig^b,
T.H. Bertram^c, R.C. Cohen^c

^a*School of Engineering and Applied Sciences, Harvard University, Cambridge, 02138 MA, USA*

^b*GEST Program, University of Maryland, Baltimore, MD, USA*

^c*Department of Chemistry, University of California, Berkeley, CA, USA*

^d*Climate Observations Department, Royal Netherlands Meteorological Institute, De Bilt, The Netherlands*

Received 22 January 2008; accepted 5 February 2008

Abstract

We compare tropospheric NO₂ column measurements from the Ozone Monitoring Instrument (OMI) aboard the EOS Aura satellite with coincident in situ aircraft measurements on vertical spirals over the southern United States, Mexico, and the Gulf of Mexico during the INTEX-B campaign in March 2006. Good correlation with no significant bias ($r^2 = 0.67$, slope = 0.99 ± 0.17 , $n = 12$) is found for the ensemble of comparisons when the aircraft could spiral sufficiently low to sample most of the NO₂ column. Urban spirals where large extrapolations were needed below the aircraft floor (1000 ft) showed poorer agreement. We use the OMI observations together with a global chemical transport model (GEOS-Chem) to estimate emissions of nitrogen oxides over the eastern United States and Mexico in March 2006. Comparison to EPA's National Emissions Inventory 1999 (NEI99) calls for a decrease in power plant emissions and an increase in on-road vehicle emissions relative to that inventory. The rise in vehicular emissions is offsetting the reduction in power plant and industry emissions. These findings are consistent with independent assessments. Our OMI-derived emission estimates for Mexico are higher by a factor of 2.0 ± 0.5 than bottom-up emissions, similar to a comparison between the recently released Mexican NEI99 inventory and the bottom-up showing that the Mexican NEI99 inventory is 1.6–1.8× higher.

© 2008 Elsevier Ltd. All rights reserved.

Keywords: INTEX-B; Validation; OMI; Tropospheric NO₂; NO_x emissions

1. Introduction

Nitrogen oxides (NO_x = NO + NO₂) are short-lived (3–24 h at the surface) species that catalyze ozone production and contribute to aerosol formation in the troposphere. Human activity is a major

*Corresponding author.

E-mail address: boersma@seas.harvard.edu (K.F. Boersma).

source of NO_x in the troposphere, but it is difficult to quantify the influence of NO_x emissions on atmospheric chemistry because there are large uncertainties as to when, where, and how much NO_x has been emitted. Since 1995, satellite retrievals of tropospheric NO_2 columns extend the existing ground-based and aircraft observational database with ever more spatial detail and coverage. These satellite observations offer the possibility to improve our understanding of NO_x sources and chemistry by testing or improving emission inventories through inverse (top-down) modelling techniques (e.g. Martin et al., 2003).

For top-down emission estimates to be meaningful, the satellite retrievals need to be validated and their errors need to be characterized. This is especially relevant for retrievals of tropospheric NO_2 that necessarily rely on assumptions regarding the state of the atmosphere (e.g. NO_2 profile shape). Studies into error budgets for retrievals from the Global Ozone Monitoring Experiment (GOME), the Scanning Imaging Absorption Spectrometer for Atmospheric CHartography (SCIAMACHY) and the Ozone Monitoring Instrument (OMI) on board EOS Aura indicate uncertainties on the order of 30–60% for individual measurements (Richter and Burrows, 2002; Martin et al., 2002; Boersma et al., 2004, 2007). Moreover, comparisons of GOME NO_2 retrievals from three different groups showed systematic differences in NO_2 columns of 10–50% for some regions and seasons (van Noije et al., 2006).

Until now, most evaluation of GOME and SCIAMACHY NO_2 retrievals has relied on serendipitous overlap with other measurements (e.g. ground-based Schaub et al., 2006 or aircraft-based Martin et al., 2004). These comparisons relied heavily on assumptions on the spatial and temporal representativity of the validation data for satellite scenes with sizes of $60 \times 30 \text{ km}^2$ (SCIAMACHY) and $320 \times 40 \text{ km}^2$ (GOME). In addition, studies using in situ concentrations measured at ground-level only (e.g. Ordóñez et al., 2006) had to make strong assumptions on the vertical distribution of NO_2 in the unobserved part of the troposphere. Aircraft measurements of NO_2 profiles coinciding in space and time with satellite observations allow a more direct validation opportunity as shown by Heland et al. (2002) and Martin et al. (2006).

One of the goals of the Intercontinental Chemical Transport Experiment—Phase B (INTEX-B) DC-8 aircraft experiment conducted in March 2006 from

Houston, Texas, was to validate satellite retrievals of tropospheric composition, in particular NO_2 columns from OMI (Levelt et al., 2006) launched aboard the Aura satellite in July 2004. This was an important opportunity for validation, for three reasons:

- The validation profiles (spirals) were collocated and coincident with the satellite overpasses. The spiral radius ($\sim 20 \text{ km}$) was consistent with the OMI pixel size ($13 \times 24 \text{ km}^2$ at nadir).
- The vertical profiling of the DC-8 extended from the boundary layer up to 12 km altitude, thus virtually sampling the whole troposphere.
- The INTEX-B scientific focus of characterizing the outflow of pollution from Mexico City provided independent NO_2 observations close to source regions as well as in downwind and remote areas, allowing for validation under a large range of conditions.

Validation of OMI tropospheric NO_2 columns for the INTEX-B conditions has particular value for better constraining North American sources of NO_x . Recent regulation from the U.S. Environmental Protection Agency has imposed sharp decreases in emissions from power plants to abate ozone pollution (Frost et al., 2006), and OMI offers an opportunity to verify this. Kim et al. (2006) inferred summertime reductions in NO_x from power plants from SCIAMACHY observations and the question remains whether these reductions can also be observed outside of the summertime season. OMI, with its daily global coverage and small pixel sizes, is well suited to constrain NO_x emissions. This has recently been demonstrated by Wang et al. (2007b) in a paper showing that aggressive measures to restrict traffic issued by the Beijing municipal authorities led to reduced NO_x emissions that were detected by the OMI near-real time (NRT) NO_2 retrieval. In this paper we constrain NO_x emissions over the United States, and over Mexico, where emission inventories for Mexican NO_x sources are still highly uncertain (Kuhns et al., 2005).

2. Validation of OMI NO_2 columns with INTEX-B aircraft profiles

2.1. Ozone monitoring instrument

The Dutch–Finnish OMI on NASA's EOS Aura satellite is a nadir-viewing imaging spectrograph

measuring direct and atmosphere-backscattered sunlight in the ultraviolet–visible (UV–VIS) range from 270 to 500 nm (Levelt et al., 2006). EOS Aura was launched on 15 July 2004 and traces a Sun-synchronous, polar orbit at approximately 705 km altitude with a period of 100 min and a local equator crossing time between 13:40 and 13:50 local time. EOS Aura is part of the so-called A-Train, a group of formation-flying satellites equipped with instruments focusing on climate change. OMI has two two-dimensional CCD detectors that record the (ir)radiance spectrum in one direction, and observe the Earth's atmosphere with a 114° field of view, distributed over 60 discrete viewing angles, perpendicular to the flight direction. OMI's wide field of view corresponds to a 2600 km wide spatial swath on the Earth's surface for one orbit, large enough to achieve complete global coverage in one day. OMI pixels are 13–26 km along track, and 24–135 km across track, depending on the viewing zenith angle.

OMI has three spectral channels: UV1 (270–310 nm) and UV2 (310–365 nm) are covered by CCD1. CCD2 covers the VIS channel from 365–500 nm with a spectral sampling of 0.21 nm and a spectral resolution of 0.63 nm. It is in this channel that the spectral features of NO_2 are most prominent. The spectral sampling rate (resolution/sampling) is ~ 3 , large enough to avoid spectral undersampling or aliasing difficulties in the spectral fitting process. During nominal operations OMI takes one measurement of the solar irradiance per day.

2.2. NRT OMI tropospheric NO_2 retrieval

We use here NRT tropospheric NO_2 columns (Boersma et al., 2007) retrieved by KNMI/NASA (version TM4NO2A-OMI v0.8, February 2006). On-line OMI NRT retrieval versions are subject to improvements, but v0.8-data are available upon request. The NRT data are available to the scientific community (www.temis.nl) within 3–4 h of the ($\sim 13:40$ local time) observation with potential benefits for air quality monitoring and forecasting. This retrieval is independent from the OMI standard product at NASA Goddard Earth Sciences Data and Information Services Center (GES-DISC, Boersma et al., 2002; Bucselo et al., 2006). Validation of the standard product is described elsewhere (Brinkma et al., 2008; Bucselo et al., 2008; Wenig et al., 2008). Bucselo et al. (2008) compare standard product and NRT tropospheric NO_2 columns, and find considerable differences between the two

with NO_2 from the NRT generally being higher than from the standard product, depending on the regression method and extrapolation assumptions used.

Total slant columns are determined by non-linear least squares fitting of a set of reference spectra (NO_2 , ozone, Ring effect) and a low-order polynomial to reflectance spectra (proportional to the ratio of the radiance at top-of-atmosphere and the solar irradiance spectra) observed by OMI in the 405–465 nm window. Instrument calibration errors lead to spurious across-track variability in the NO_2 slant columns that is corrected with a low-pass filtering procedure (Boersma et al., 2007). The filtering retains slant column variation with satellite viewing angle, while suppressing spurious jumps in slant columns from one viewing angle to the other. After this correction, slant column uncertainty is estimated to be $\sim 0.7 \times 10^{15} \text{ mol cm}^{-2}$. Stratospheric NO_2 is estimated by assimilating NO_2 slant columns in the TM4 chemistry-transport model.

Tropospheric slant columns are obtained by subtracting the stratospheric slant column from the total slant column and are subsequently converted into vertical columns by applying the tropospheric air mass factor (AMF, Palmer et al., 2001). The temperature dependence of the NO_2 cross section is accounted for using ECMWF temperature profiles for every OMI viewing scene as described in Boersma et al. (2004). AMFs are calculated using a radiative transfer (forward) model (DAK, Stammes, 2001) and our current best estimates of the forward model parameters cloud fraction, cloud pressure, surface albedo and pressure, and a priori profile shape. Cloud parameters are obtained from the OMI $\text{O}_2\text{--O}_2$ algorithm (Acarreta et al., 2004). A comparison of cloud distributions from the SCIAMACHY FRESKO (Koelemeijer et al., 2001) and the OMI $\text{O}_2\text{--O}_2$ algorithm showed consistency with mean differences between FRESKO and OMI cloud fractions < 0.01 and cloud pressures $< 60 \text{ hPa}$ (Boersma et al., 2007). Monthly varying surface albedo fields are from a combination of the databases by Herman and Celarier (1997) and Koelemeijer et al. (2003) at a resolution of $1^\circ \times 1.25^\circ$. A priori NO_2 profiles and surface pressure for every OMI pixel at 13:30 local time are specified by TM4 at $3^\circ \times 2^\circ$.

Total uncertainty in the OMI retrievals of tropospheric NO_2 columns over source regions is for the larger part determined by the AMF calculation due to uncertainty in albedo, cloud parameters and

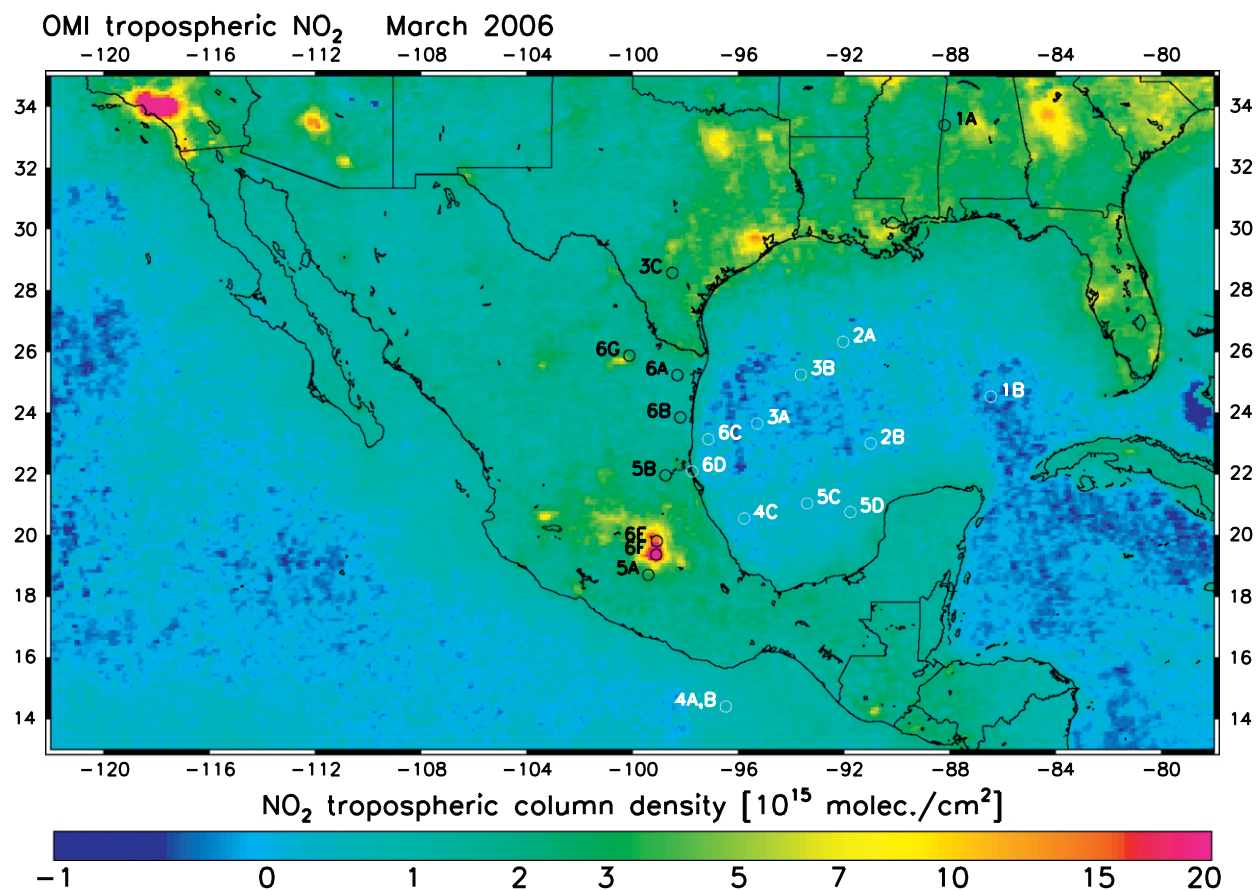


Fig. 1. Monthly mean tropospheric NO₂ column in March 2006 from OMI for cloud-free situations (cloud radiance <50%). The circles indicate the location of aircraft profiles over sea (white) and land (black). 1A stands for flight 1, first validation spiral (A). Details on validation profiles can be found in Table 1.

aerosols, and the a priori profile. The 1-sigma uncertainty for an individual OMI retrieval can be estimated as a base component from the spectral fitting and stratospheric correction, plus a relative error from the AMF uncertainty. The base component is in the $0.5\text{--}1.5 \times 10^{15}$ mol cm⁻² range depending on the AMF. The relative error is in the 10–40% range and may include unknown spatial undersampling errors because the a priori (albedo, surface pressure, profile shape) information is available only at coarse resolution compared to the OMI pixel size as discussed in Boersma et al. (2007) and Schaub et al. (2007). OMI retrievals over locations with extreme aerosol loadings such as Mexico City may be subject to above-average aerosol error contributions.

2.3. Aircraft observations

We use NO₂ observations collected from the DC-8 aircraft during the six INTEX-B science flights

conducted from Houston in March 2006. The instrumented DC-8 spiraled (up or down) during OMI overpasses with a radius of approximately 20 km through the 0.3–12.0 km column. In addition, we derive profiles from ascent and descent flights that covered a large vertical portion of the troposphere over a limited horizontal domain. Fig. 1 and Table 1 give an overview of these profiles.

NO₂ on the DC-8 was measured by laser-induced fluorescence (LIF) (Thornton et al., 2003). In brief, an air sample is pulled into the instrument wherein laser light is used to excite the NO₂ in the sample. The laser frequency is alternately tuned between the peak absorption of a strong resonant feature (10 s) and an offline position in the weak continuum absorption (5 s). The difference between the two signals is directly proportional to the NO₂ mixing ratio (Thornton et al., 2000; Cleary et al., 2002). The precision of the NO₂ measurements depends on

Table 1
Overview of DC-8 validation profiles during INTEX-B in March 2006

Date	Profile, type	Lat. (°N)	Lon. (°W)	Time (UT)	Pressure range (hPa)	DC-8 (10^{15} mol cm $^{-2}$)	OMI (10^{15} mol cm $^{-2}$)	No. of pixels
4 March	1A, spiral	33.4	88.2	18:10	979–218	2.03 ± 0.52	2.55 ± 1.56	29
4 March	1B, spiral	24.5	86.5	20:34	970–331	0.71 ± 0.23	-0.38 ± 0.79	21
9 March	2A, ascent	26.3	92.0	18:29	986–318	0.61 ± 0.12	-0.02 ± 0.34	10
9 March	2B, spiral	23.0	91.0	19:42	983–226	0.49 ± 0.07	0.07 ± 0.36	16
11 March	3A, ascent	23.7	95.3	17:14	975–581	1.05 ± 0.20	1.03 ± 0.40	7
11 March	3B, descent	25.3	93.6	17:54	976–376	0.98 ± 0.14	0.55 ± 0.34	17
11 March	3C, descent	28.6	98.5	23:27	957–585	1.42 ± 0.28	2.02 ± 0.35	3
12 March	4A, descent	14.5	96.4	21:10	985–557	0.28 ± 0.10	0.20 ± 0.51	1
12 March	4B, spiral	14.3	96.5	21:29	985–468	0.49 ± 0.18	0.44 ± 0.62	19
12 March	4C, ascent	20.6	95.8	23:29	967–383	0.47 ± 0.07	-0.07 ± 0.97	2
16 March	5A, descent	18.7	99.4	17:13	736–376	6.98 ± 2.50	6.54 ± 2.52	6
16 March	5B, ascent	22.0	98.8	18:11	970–427	3.39 ± 0.59	1.81 ± 0.49	3
16 March	5C, descent	21.0	93.4	19:02	983–706	0.41 ± 0.24	0.10 ± 0.28	2
16 March	5D, spiral	20.8	91.8	19:42	983–200	0.69 ± 0.13	0.13 ± 0.58	20
19 March	6A, descent	25.2	98.3	17:53	938–639	1.01 ± 0.25	1.60 ± 0.47	7
19 March	6B, ascent	23.9	98.2	18:17	922–692	1.54 ± 0.45	1.69 ± 0.58	12
19 March	6C, descent	23.1	97.1	18:30	959–693	1.77 ± 0.55	0.43 ± 0.48	10
19 March	6D, ascent	22.1	97.8	18:51	965–729	2.36 ± 0.70	1.45 ± 0.65	13
19 March	6E, descent	19.8	99.1	19:40	762–428	7.26 ± 2.45	10.29 ± 2.14	4
19 March	6F, ascent	19.4	99.1	20:04	748–216	2.84 ± 1.10	7.17 ± 3.62	4
19 March	6G, ascent	25.9	100.2	21:47	922–572	3.60 ± 0.51	2.97 ± 1.66	6

laser power, background noise, and signal strength (NO_2 mixing ratio).

We estimate tropospheric NO_2 columns from the DC-8 observed NO_2 mixing ratios as follows:

- We use the 1-s mixing ratio observations from the Berkeley TD-LIF instrument with a precision of ± 23 ppt at 1000 hPa and ± 46 ppt at 200 hPa. We average LIF-observed NO_2 mixing ratios in increments of 1 hPa and subsequently convert these into (1-hPa) NO_2 subcolumns. Our 1-hPa bins typically contain 1–2 1-s measurements.
- For 1-hPa increments that have not been sampled by the LIF instrument, we linearly interpolate NO_2 subcolumns between closest observed values. Fig. 2 shows three typical NO_2 profiles (1B, 5B, and 6F) binned in 1-hPa increments, along with their precisions described above. One-second data are outside of the precision curves for very few occasions, indicating that the precision estimates of 23–46 ppt are on the conservative side.
- We extrapolate the average subcolumn over 10 1-hPa bins closest to the bottom altitude of the aircraft to the surface pressure obtained from the OMI measurements, thus conserving the NO_2

subcolumn. The extrapolation is based on the observed subcolumns at the lowest aircraft altitudes, without making explicit assumptions on the extent of mixing in the unobserved part of the boundary layer. For profiles over complex terrain (16 and 19 March 2006) we obtained the surface pressure by adding 30 hPa to the measured pressure of the aircraft at its lowest altitude, motivated by the DC-8 bottom altitude being 0.3 km (1000 ft) above land. Likewise, we extrapolate the average subcolumn over 20 1 hPa bins closest to the ceiling altitude of the aircraft to the tropopause pressure (~ 200 hPa). For profiles observed on flight 6 (19 March 2006), we used the observations of validation profile 6F above the ceiling altitude, and subsequently extrapolated from 216 to 200 hPa.

- The sum of all 1 hPa subcolumns from the (OMI) surface pressure to 200 hPa is taken to be the tropospheric NO_2 column.

We estimate relative errors in the DC-8 NO_2 columns between the bottom and top altitudes to be 10%, accounting for a nominal LIF accuracy of 5–10% (Day et al., 2002) and interpolation errors.

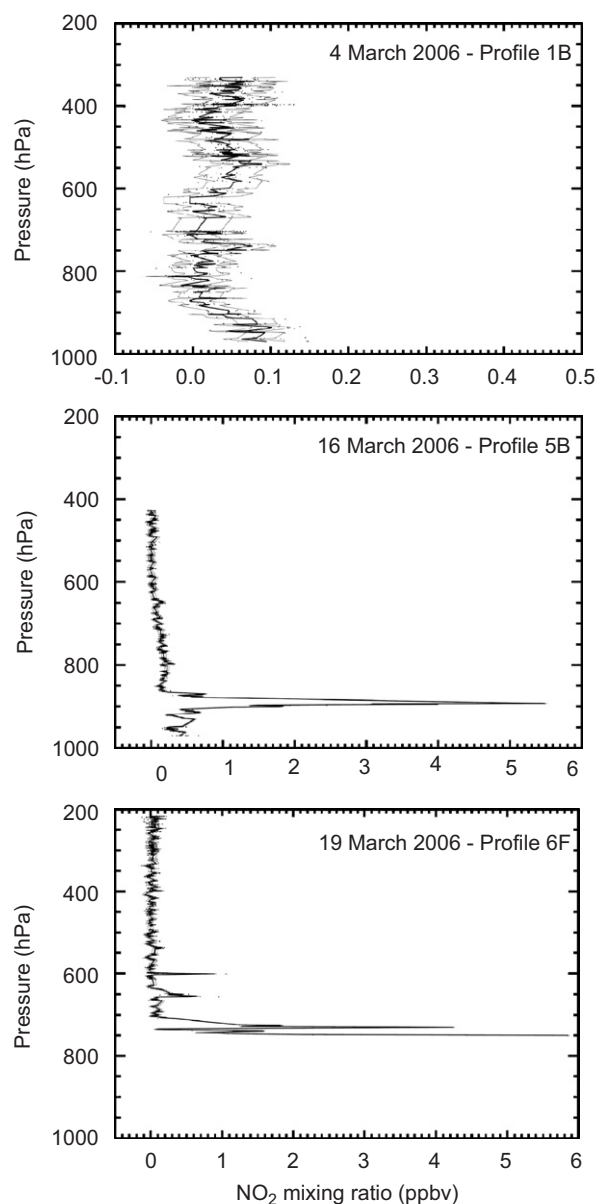


Fig. 2. Typical tropospheric NO_2 profiles measured by the LIF from the DC-8 aircraft during the first phase of the INTEX-B campaign over the Gulf of Mexico. The center black line indicates the 1-hPa binned data, and the gray lines indicate the precision. Small dots represent 1-s data, and these lie generally well within the precision estimates. Further details on validation profiles can be found in Table 1.

2.4. Validation of results

Fig. 1 shows monthly mean (March 2006) tropospheric NO_2 columns from OMI observed on cloud-free (cloud radiance fractions $< 50\%$) days and locations over the INTEX-B domain. The circles

indicate the location of the validation profiles over sea (white) and land (black). Table 1 gives the location, time, vertical coverage, and estimated DC-8 NO_2 column for all validation spirals. Fig. 1 and Table 1 include a total of 21 cloud-free validation opportunities under conditions ranging from relatively clean (remote Gulf of Mexico, e.g. 1B) to strongly polluted (Mexico City, e.g. 6E), although not yet covering the full dynamical range shown in the color bar of Fig. 1.

We averaged cloud-free (cloud radiance fraction $< 50\%$) OMI pixels over the spatial extent (OMI pixel center within $\pm 0.1^\circ$ of the spiral) of the DC-8 spirals for comparison to the DC-8 tropospheric NO_2 columns. We find up to 29 pixels per spiral. For columns derived from ascent or descent flights, we selected OMI observations over the spatial extent of the DC-8 flight where the LIF observed NO_2 mixing ratios are in excess of 0.1 ppb. In practice this means that we select OMI pixels that are horizontally collocated with the portion of the DC-8 flight track that sampled the lowest part of the troposphere. This results in up to 19 pixels per ascent/descent. We compare the mean of collocated OMI NO_2 columns to the DC-8 column and we approximate the uncertainty of the mean OMI NO_2 column by the standard deviation of the mean, accounting for variability due to random retrieval errors as well as spatial heterogeneity. Table 1 summarizes the information for each validation profile and shows the collocated OMI NO_2 columns, their uncertainty and the number of pixels used.

The DC-8 bottom altitude is 0.3 km (1000 ft) over land and 0.15 km (500 ft) over water. Over source regions, the lowest atmospheric layer is expected to have the highest NO_2 mixing ratios. Extrapolating NO_2 subcolumns from the bottom of the DC-8 profile down to the surface leads in a number of cases to high fractions ($> 50\%$) of the tropospheric column originating from extrapolation. In these cases, where a significant part of the tropospheric NO_2 column is unobserved, our estimates of the DC-8 tropospheric columns are particularly uncertain. We assume that the extrapolated fraction is 75% uncertain based on an analysis of GEOS-Chem simulations, which showed that, for given month, location and free-tropospheric column amount, the column variation in the lower troposphere is $\sim 75\%$ (Eric Bucsela, private communication). The total uncertainty in DC-8 columns can be expressed as $\varepsilon = 0.1 \times N_{\text{DC8}} + 0.75 \times N_{\text{DC8ext}}$, with

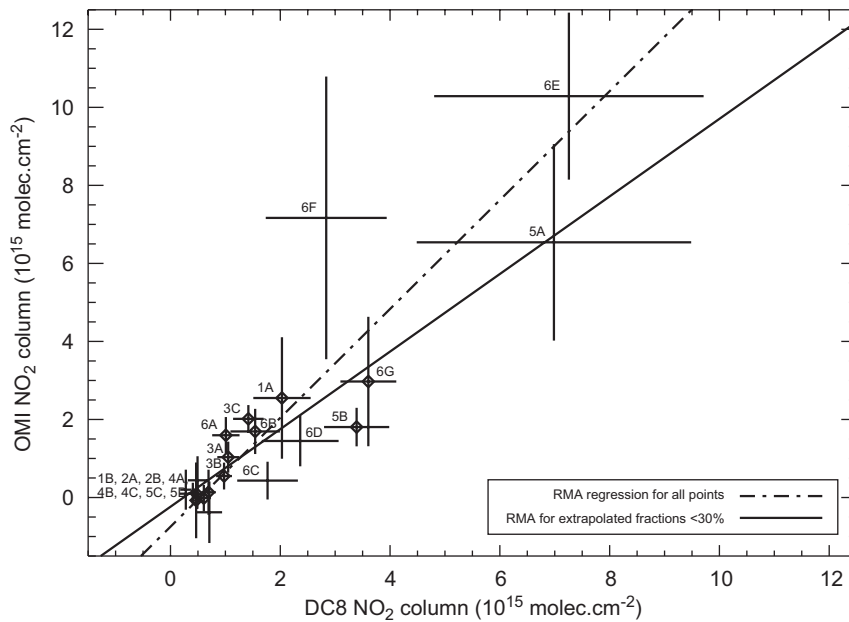


Fig. 3. Comparison of coincident OMI tropospheric NO_2 columns with those determined from LIF in situ measurements from the DC-8 aircraft. Coincidences are labelled as in Fig. 1 and Table 1. Vertical bars are shown for illustration of the estimated OMI retrieval uncertainty, and horizontal bars for illustration of the estimated uncertainty of the DC-8 LIF measurements determined from in situ measurement uncertainty and extrapolation assumptions. The dashed line represents the reduced major axis regression through all data with a slope of 1.40 ± 0.21 ($r^2 = 0.79$). The solid line represents the reduced major axis (RMA) regression for situations when less than 30% of the DC-8 column has been extrapolated (diamonds) with a slope of 0.99 ± 0.17 ($r^2 = 0.67$).

N_{DC8} the observed column between the DC-8 bottom and top altitude, and $N_{\text{DC8}_{\text{ext}}}$ the extrapolated column. The estimated uncertainties in the OMI and DC-8 columns are illustrated as error bars in Fig. 3.

Fig. 3 shows the comparison of coinciding OMI and DC-8 tropospheric NO_2 columns. The coefficient of determination, r^2 , is 0.79 ($n = 21$). Because no clear distinction can be drawn between OMI and DC-8 tropospheric NO_2 columns in terms of their dependency relations (both have considerable uncertainties that are uncertain themselves, see error bars in Fig. 3), we choose the reduced major axis (RMA, Clarke, 1980) regression method that minimizes the joint deviation of both variables from the regression model without attributing weights to the data. We find an x -axis intercept of $-0.75(\pm 0.23) \times 10^{15} \text{ mol cm}^{-2}$ and a slope of $1.40(\pm 0.21)$. On average OMI observations preceded those by the DC-8 by 11 min (RMS time difference: 109 min). To reduce the effect of extrapolation assumptions on the comparison, we also compared OMI and DC-8 columns for situations where the extrapolated fraction of the DC-8 column was $<30\%$. For this subset, with column values $<4.0 \times 10^{15} \text{ mol cm}^{-2}$,

we find $r^2 = 0.67$ ($n = 12$). The RMA regression now gives an x -axis intercept of $-0.24(\pm 0.18) \times 10^{15} \text{ mol cm}^{-2}$ and a slope of $0.99(\pm 0.17)$. The values for the intercept and slope are different from the results obtained for the entire validation data set because the RMA regression does not attribute weights to the data points and the highly uncertain DC-8 columns with extrapolated fractions $>30\%$ have now been removed. The negative intercepts that we find appear consistent with a low bias in OMI tropospheric NO_2 reported by Boersma et al. (2008) over the Pacific Ocean, and we evaluate this further below.

We compare OMI retrievals with DC-8 validation flights over ocean only, with DC-8 columns $<1.0 \times 10^{15} \text{ mol cm}^{-2}$ (1B, 2A, 2B, 4A, 4B, 4C, 5C, and 5D). Fig. 4 shows a histogram of differences between 91 individual OMI pixels and the collocated DC-8 columns. OMI – DC-8 differences were binned in increments of $0.2 \times 10^{15} \text{ mol cm}^{-2}$. OMI generally observes lower columns and the difference can be fitted with a Gaussian distribution with median of approximately $-0.6 \times 10^{15} \text{ mol cm}^{-2}$ and width (the distance from the median where the height of the curve is reduced to $e^{-1/2}$ of its peak

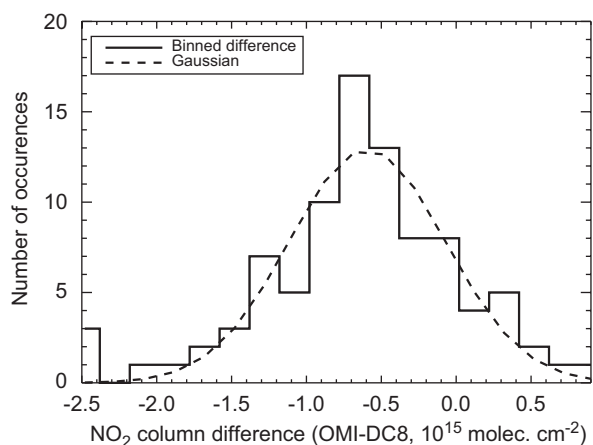


Fig. 4. Histogram of differences between individual OMI NRT tropospheric NO₂ retrievals and coinciding DC-8 columns over oceans ($< 1.0 \times 10^{15}$ mol cm⁻²). Differences have been binned in increments of 0.2×10^{15} mol cm⁻². The dashed line represents a Gaussian distribution fitted to the differences.

value) of $\sim 0.5 \times 10^{15}$ mol cm⁻². The median gives an estimate of the low bias in the OMI retrievals over ocean surfaces, and the width gives an estimate of the random error. The OMI bias estimate is consistent with that of Boersma et al. (2008) and the random error estimate is consistent with the previous error analyses by Boersma et al. (2004, 2007). The negative bias is not apparent in the slant columns, but is the result of subtracting stratospheric slant columns from the slant columns. Too high estimates for the stratospheric slant columns are likely related to errors in the (albedo, cloud) inputs to the assimilation procedure. Such input errors lead to too high values for the averaging kernel which in turn leads to too strong ‘forcing’ in the assimilation method (see Boersma et al., 2007), so that stratospheric slant columns will be overestimated. Indeed, there have been known problems with an early version of the O₂–O₂ cloud retrieval (0.9.43, www.knmi.nl/omi/research/product/Cloud/OMCLDO2_history.html) used for v0.8 OMI NO₂ data. These problems have been corrected in a more recent version of the OMI O₂–O₂ algorithm that is being used in the latest OMI NRT NO₂ retrievals.

We compare NRT OMI retrievals to DC-8 columns by Bucseła et al. (2008), who use different assumptions on integration and extrapolation. We find an intercept $-0.96(\pm 0.28) \times 10^{15}$ mol cm⁻² and a slope of $1.84(\pm 0.40)$ ($n = 19$). The higher slope is due to two distinct outliers over the Mexico City region, where Bucseła et al. (2008) extrapolate much smaller fractions than in this work. Over Mexico

City, the surface pressures in Bucseła et al. (2008) are not much different from the DC-8 bottom altitude, whereas in this work the surface pressure is obtained by adding 30 hPa to the measured pressure of the aircraft at its lowest altitude, motivated by the DC-8 bottom altitude being 0.3 km (1000 ft) above land. Removing these two outliers, we find an intercept of $-0.56(\pm 0.37) \times 10^{15}$ mol cm⁻² and a slope of $1.25(\pm 0.44)$ ($n = 17$), in close agreement to our results. For a direct comparison of NRT and standard product retrievals of OMI tropospheric NO₂ columns, and for a more detailed discussion of retrieval issues, including a comparison of a priori profiles used in OMI NO₂ retrievals and actual DC-8 measurements, we refer to the related paper by Bucseła et al. (2008).

3. Top-down NO_x emission estimates from OMI

We now use the OMI data to determine top-down surface NO_x emissions for March 2006 over the contiguous United States and Mexico, and compare to bottom-up inventories for the INTEX-B domain by the U.S. and Mexico Environmental Protection Agencies (US: 1999 National Emission Inventory (NEI99), northern Mexico: Big Bend Regional Aerosol and Visibility Observational (BRAVO, Kuhns et al., 2005) Study, southern Mexico: Global Emissions Inventory Activity (GEIA)) that are in use in global chemistry-transport models. We follow the approach by Martin et al. (2003), determining local top-down surface NO_x emissions (E_{ij}^t , where the indices indicate the location of the grid cell) by scaling bottom-up NO_x emissions (E_{ij}^b) by the ratio of the local retrieved (N_{ij}^v) and GEOS-Chem simulated NO₂ columns (N_{ij}^b), sampled close to the satellite overpass time:

$$E_{ij}^t = \frac{N_{ij}^v}{N_{ij}^b} E_{ij}^b \quad (1)$$

GEOS-Chem uses the NEI99 and BRAVO/GEIA bottom-up inventories over the United States and Mexico and simulates NO₂ columns at $2^\circ \times 2.5^\circ$ (see Appendix A). Because emitted NO_x may be transported from one grid cell to the other, this approach may lead to inferring spurious top-down emissions, especially for a region with weak emissions adjacent to a grid cell with strong emissions. The observed column at location (i, j) is influenced by emissions from grid cell (i, j) itself, and by emissions from adjacent grid cells, i.e. the column

field is a smoothed representation of the underlying emission field. It is possible to simulate this smoothing without making explicit assumptions about meteorological parameters by the application of a kernel on the emission field:

$$\alpha N_{ij}^{v'} = \sum_{m=-1}^1 \sum_{l=-1}^1 K_{l,m} E_{i+l,j+m} \quad (2)$$

with α the ratio of NO_x emissions to NO_2 columns (Martin et al., 2003), $N_{ij}^{v'}$ the approximated columns, and E_{ij} the emissions at grid cell (i,j) . Following Toenges-Schüller et al. (2006), the kernel is defined as

$$\mathbf{K} = \frac{1}{k+8} \begin{pmatrix} 1 & 1 & 1 \\ 1 & k & 1 \\ 1 & 1 & 1 \end{pmatrix}$$

with k the smoothing parameter. For the domains of the eastern United States and Mexico, we find that a choice of $k = 12$ maximizes the correlation between smoothed bottom-up emissions and the corresponding GEOS-Chem model column field. Substituting $N_{ij}^{v'}$ for N_{ij}^v in Eq. (1), rearranging terms, and assuming that the modelled smoothing is to first approximation representative for the actual smoothing ($E_{ij} = E_{ij}^b$), we find

$$E_{ij}^{v'} = \frac{E_{ij}^b}{\sum_{m=-1}^1 \sum_{l=-1}^1 K_{l,m} E_{i+l,j+m}^b} \frac{N_{ij}^v}{N_{ij}^b} E_{ij}^b. \quad (3)$$

We subsequently use Eq. (3) to derive top-down NO_x emissions from OMI below.

3.1. Eastern United States

Fig. 5 compares the top-down inventory for March 2006 with the bottom-up inventory used in GEOS-Chem. Emissions from fuel combustion are from the U.S. EPA NEI99 inventory and account for 96.6% of U.S. NO_x emissions in March. Soil emissions (Yienger and Levy, 1995) account for 2.6% and biomass burning for 0.8%. Lightning is negligible that time of year. Fig. 6 shows anthropogenic NO_x emissions from different source categories in NEI99. Transport accounts for 36% of overall emissions, power plants for 25%, other sources (mostly non-road vehicles) for 21%, and industry for 17%. The patterns exhibit only weak spatial correlation.

The top-down and NEI99 inventories have a high degree of consistency ($r^2 = 0.86, n = 118$). Fig. 5

shows that top-down NO_x emissions are especially smaller over the Ohio River valley, a region with strong emissions from power plants (upper right panel in Fig. 6). Over the northeastern United States, where transport emissions are significant, a number of grid cells show larger top-down emissions.

We exploited the difference in source patterns in Fig. 6 to determine the contributions of the individual source categories to the differences between the NEI99 and top-down inventories. We achieve this by a least-squares fit of a linear combination of the anthropogenic NO_x source patterns (shown in Fig. 6) to the reduced top-down inventory \mathbf{E}'_t (written as a vector with emissions $E'_{i,j}$ as elements). The reduced inventory \mathbf{E}'_t is obtained by subtracting the small soil, biomass burning, NEI99 aircraft and industrial solvent NO_x contributions from the top-down \mathbf{E}_t . The modelled inventory (\mathbf{E}_{mod}) is written as

$$\mathbf{E}_{\text{mod}} = \sum_{i=1}^4 a_i \mathbf{E}_i. \quad (4)$$

Index $i = 1$ represents industry, $i = 2$ power plant, $i = 3$ other (non-road vehicle and residential fuel burning), and $i = 4$ on-road vehicle NO_x emissions. Since \mathbf{E}_{mod} is linear in its fit parameters a_i , $\|\mathbf{E}'_t - \mathbf{E}_{\text{mod}}\|$ is minimized with a linear least squares method based on singular value decomposition (SVD, Press et al., 1986). Assuming that spatial patterns for the source categories have not changed dramatically between 1999 and 2006, a_i are the multiplication coefficients that indicate the percentage change in emission strength between March 1999 and March 2006.

The minimization by SVD optimally reduces residuals $\mathbf{E}'_t - \mathbf{E}_{\text{mod}}$ for the set of fit coefficients $a_1 = 0.74$, $a_2 = 0.75$, $a_3 = 1.09$, and $a_4 = 1.30$ relative to $\mathbf{E}'_t - \mathbf{E}_b$ (where $a_1 = a_2 = a_3 = a_4 = 1.0$). The minimization $\|\mathbf{E}'_t - \mathbf{E}_{\text{mod}}\|$ reduces the chi-squared statistic by 8% relative to $\|\mathbf{E}'_t - \mathbf{E}_b\|$. Uncertainties in the fit coefficients have been determined with the bootstrap method by repeating our experiment 500 times replacing our original fields with a random sampling of the 118 grid cells. The coefficients a_i have been computed for each random selection. The averages of the ensemble (with 500 members) reproduce the coefficients a_i and the bootstrap standard errors represent the uncertainties in a_i . The bootstrap standard errors are < 0.02 for all fit coefficients, and can be

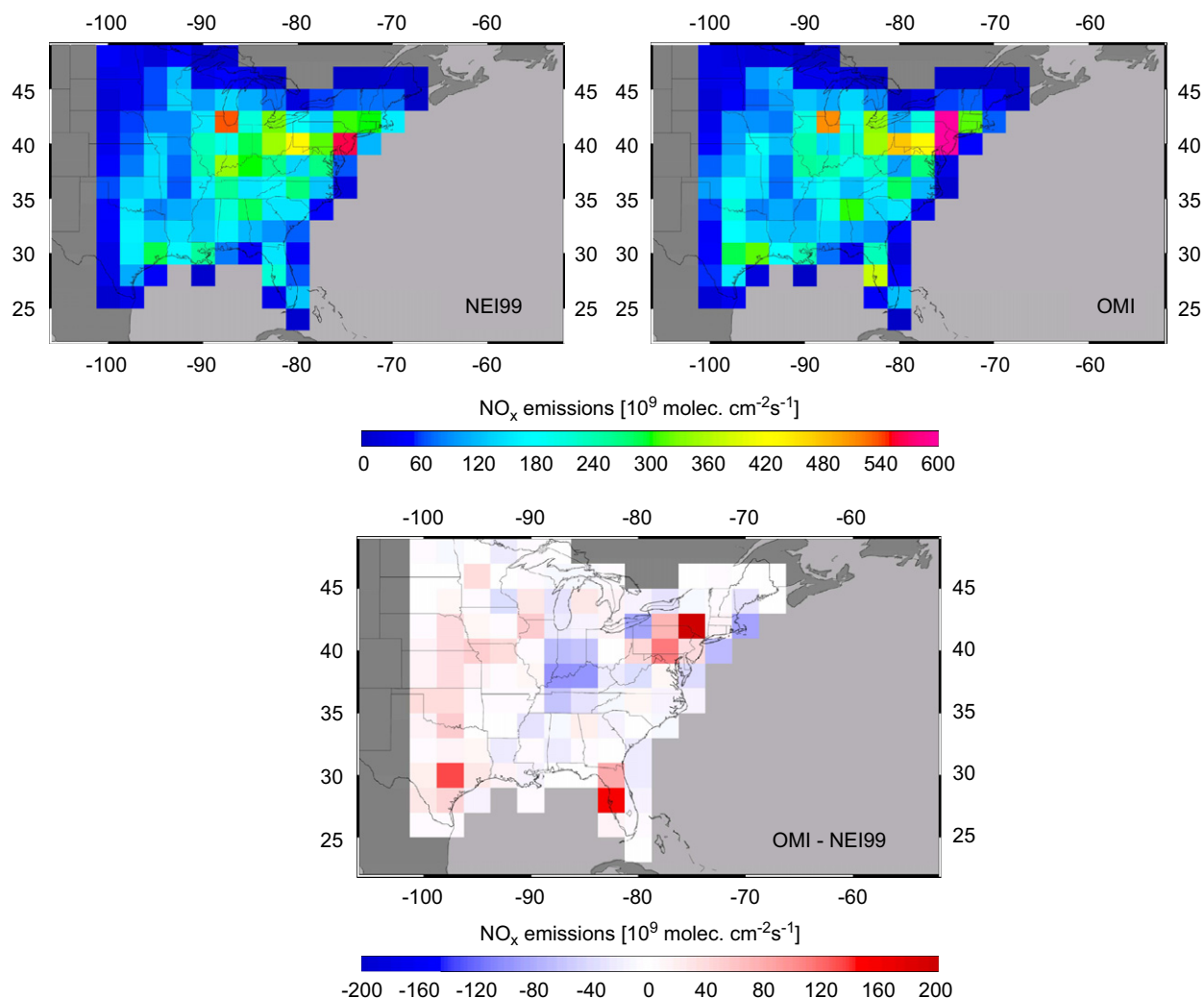


Fig. 5. Surface NO_x emissions at 2° × 2.5° horizontal resolution for the eastern U.S. in March from the National Emission Inventory 1999 (upper left) and from the top-down emission inventory (upper right) for March 2006. Differences between the two inventories are shown on the bottom panel.

interpreted as empirical estimates of the uncertainty in the absence of systematic errors in the top-down emission inventory. Overall, we find a small increase of 3.2% in total NO_x emissions between March 1999 (NEI99, 0.452 Tg N) and March 2006 (top-down, 0.465 Tg N), indicating that the increase in vehicular emissions is offsetting the reduction in power plant and industry emissions. We calculate the error in the top-down emission inventory following Martin et al. (2006) by adding in quadrature the error in the OMI NO₂ retrieval, and in the simulated NO_x emissions to NO₂ column ratio. Retrieval uncertainties are $\pm(1.0 \times 10^{15} \text{ mol cm}^{-2} + 30\%)$ for individual measurements as discussed in Section 2.2, but the uncertainty in the

monthly mean is strongly reduced by averaging over large numbers of cloud-free OMI observations per 2° × 2.5° grid cell (typically 50) and over many days (typically 20 per grid cell). Fig. 3 (slope 0.99 ± 0.17) suggests that OMI observations may be biased by 17%, and we adopt this number as the estimate for the error in the monthly mean OMI NO₂ columns. Previous comparison of GEOS-Chem simulations and observations (Li et al., 2004; Wang et al., 2004; Hudman et al., 2007) suggests that the model skill in calculating the emissions-to-column ratio is on the order of 20%. The overall error in the top-down inventory is approximately 26%, consistent with 25% errors recently reported by Wang et al. (2007b).

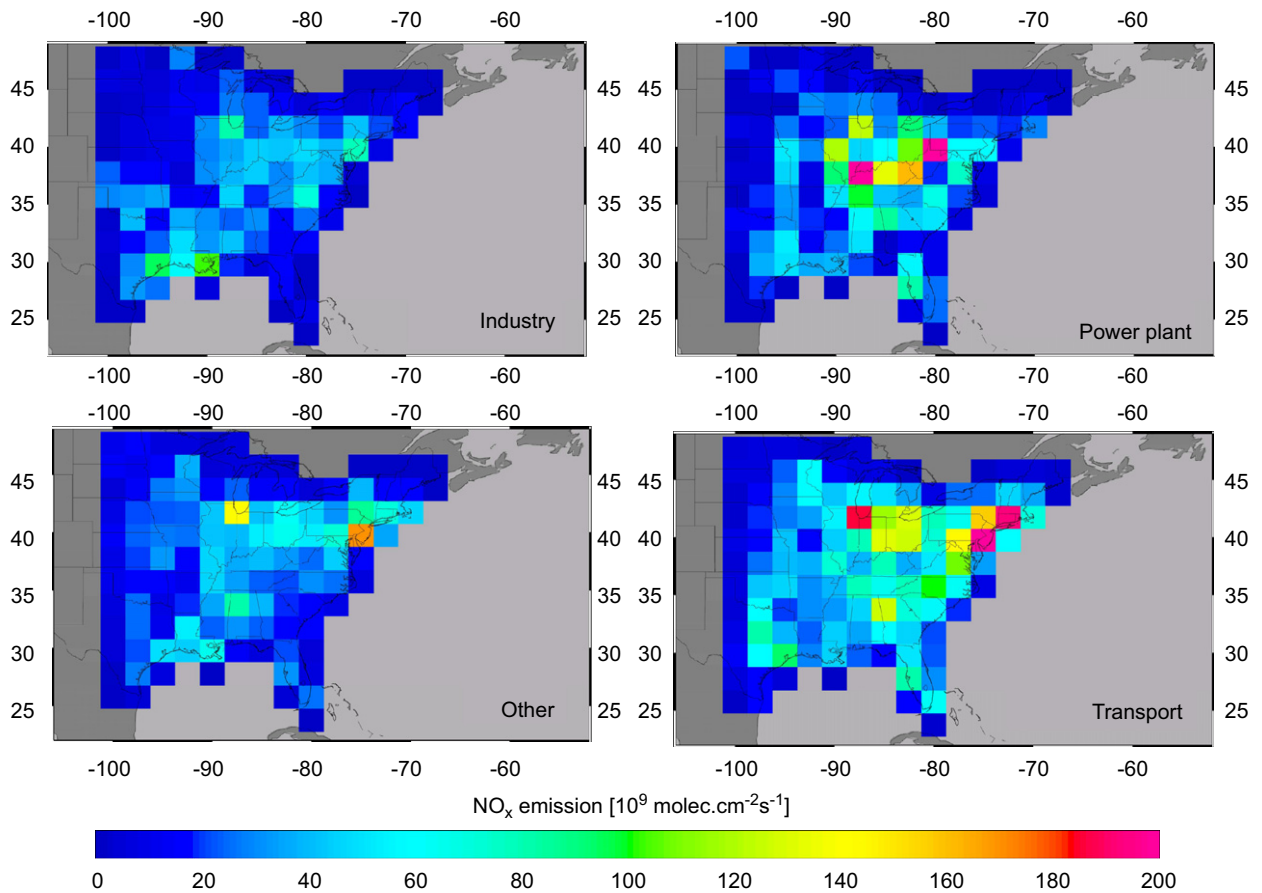


Fig. 6. Anthropogenic NO_x emissions for March from the industry, power plant, other, and transport source categories, as given by the U.S. Environmental Protection Agency National Emission Inventory for 1999 (NEI99), averaged on the $2^\circ \times 2.5^\circ$ grid of the GEOS-Chem model.

Large (-50%) decreases in power plant NO_x emissions between the summer of 1999 and the summer of 2004 have been reported in the literature (Frost et al., 2006; Hudman et al., 2007), consistent with the Ozone Transport Commission NO_x Budget program and EPA's State Implementation Plan (SIP) Call that mandates reductions in NO_x point source emissions (mostly industry and power plants) during the so-called ozone season (May–September). Power utilities achieve these reductions by emission trading and technical control strategies that may remain in place outside the ozone season. We find a significant decrease (-26%) in power plant NO_x emissions from March 1999 to March 2006. Similar decreases (-20% to -30%) between March 1999 and March 2004 have been found from monthly power plant NO_x emissions observed by EPA's Continuous Emission Monitoring System (CEMS) (G. Frost, personal communication, 2006).

Furthermore, Stavrakou and Müller (2006) found a 24% decrease in space-based NO_x emission estimates over the Indiana/Ohio river between March 1999 and March 2004.

Our inferred increase in on-road vehicle emissions ($+30\%$) is consistent with other recent results. Based on a critical evaluation of U.S. on-road vehicle inventories, Parrish (2006) infers an increase in NO_x emissions from on-road vehicles of $1.9\% \text{ yr}^{-1}$ in the 1990s. Continued from 1999 to 2006, this increase in transport emissions would be $+14\%$. Furthermore, Richter et al. (2005), van der A et al. (2006b), and Martin et al. (2006) show increasing tropospheric NO_2 columns over the transport-dominated urban areas in the northeastern U.S., and decreasing columns in the power-plant dominated region of the Ohio River Valley from 1996 to 2004. The increase in transport (road vehicle) NO_x emissions may be due to increased

diesel fuel consumption (Harley et al., 2005; Parrish, 2006). For the industry sector, subject to similar mandated emission reductions as the power plant sector, we find a similar decrease (−25%) as for the power plant sector. For ‘other’ sources (mostly non-road vehicles), we find an increase in NO_x emissions of 8% that coincides with the increase in on-road vehicle emissions.

Combining the bootstrap standard error and errors in the top-down emission inventory suggests errors in the fit coefficients of 25–30%, comparable to the magnitude of the fitted coefficients themselves. These error estimates are likely too pessimistic. Comparison of our results to those of Frost et al. (2006) and Parrish (2006) indicates that any errors in our inferred changes are more likely to result from a high bias in the satellite retrievals or in modelled OH (or in both) than from low biases. We found little evidence for a low bias in the satellite measurements over land in Section 2. A low bias in the satellite measurements, in modelled OH, or in both is even more unlikely because it would imply that our increase for on-road vehicle emissions (+30%) and decrease (−25%) for power plant emissions are underestimates of the actual changes, in stark contrast with results from Parrish (2006) (+14%) and Frost et al. (2006) (−30% to −20% for 1999–2004). We therefore tentatively estimate the errors in the fit coefficients as 20%.

After minimization of the differences $\|\mathbf{E}'_t - \mathbf{E}_{\text{mod}}\|$, there is still scatter ($r^2 = 0.87$, 13% of the variance remains unexplained). This scatter is related to a number of individual cells with large differences, indicating areas where uncertainties of the bottom-up and top-down fields are highest. Notable are the grid cells west of New York City, and west of Houston (Fig. 5). These areas were also identified as outliers in the EDGAR bottom-up inventory and a posteriori NO_x emissions from GOME as shown by Toenges-Schüller et al. (2006).

3.2. Mexico

Fig. 7 compares the top-down inventory with bottom-up inventories for Mexico. For the northern part of Mexico, enclosed by the white line in Fig. 7, as bottom-up we use the inventory developed for the Big Bend Regional Aerosol and Visibility Observational (BRAVO, Kuhns et al., 2005) Study for the year 1999. Outside of the BRAVO domain, we use anthropogenic emissions from the GEIA (Benkovitz et al., 1996) scaled by energy statistics to 1998.

Table 2 summarizes bottom-up NO_x emissions for Mexico assumed for all sources in the GEOS-Chem model. Soil NO_x emissions (Yienger and Levy, 1995) contribute 27% of bottom-up NO_x emissions over the BRAVO domain, and 19% over southern Mexico. Biomass burning NO_x emissions used in GEOS-Chem are from GFED-2 (van der Werf et al., 2006) for the latest year available (March 2004), with a magnitude of 1% of the bottom-up NO_x emissions over northern Mexico and 8% over southern Mexico.

The bottom-up and top-down inventories are spatially consistent ($r^2 = 0.84$, $n = 36$ for BRAVO, $r^2 = 0.77$, $n = 20$ for GEIA with the Mexico City and Guadalajara grid cells left out). The right panel in Fig. 7 shows that top-down emissions are higher than bottom-up emissions throughout Mexico, with the largest differences for the Mexico City and Guadalajara grid cells. Table 2 summarizes the differences between bottom-up and top-down emissions. Top-down NO_x emissions are higher than the bottom-up emissions by a factor 2.0 ± 0.5 (see error discussion in Section 3.1) over the BRAVO domain and by a factor 2.3 ± 0.6 over southern Mexico. For comparison, total NO_x emissions (including soil NO_x emissions) from the recently released (October 2006) 1999 Mexico National Emissions Inventory (Environmental Protection Agency, 2006) are $1.8 \times$ higher than BRAVO for the 12 northern states, and $1.6 \times$ higher than GEIA for southern Mexico. Trend studies by Richter et al. (2005) and van der A et al. (2006b) do not show significant changes in NO₂ concentrations over Mexico other than over Mexico City. This renders a strong increase in anthropogenic NO_x emissions throughout Mexico between March 1999 and 2006 unlikely. The total number of fire counts over the entire country in March 2006 was average compared to other years based on fire counts from FIRMS (2006) as shown by Wiedinmyer (personal communication, 2007). The spatial distribution of the difference between top-down and bottom-up NO_x emissions (Fig. 7) is reasonably correlated with the bottom-up soil NO_x emissions from Yienger and Levy (1995) over Mexico ($r^2 = 0.46$, $n = 56$). Bottom-up soil NO_x emissions over Mexico are lower by a factor of ~ 4.5 than top-down estimates in March 2006. This large underestimation of soil NO_x emissions from Yienger and Levy (1995) points to a problem already identified by Jaeglé et al. (2005) and Wang et al. (2007a) who found soil NO_x emissions inferred from GOME at mid-latitudes to be higher by

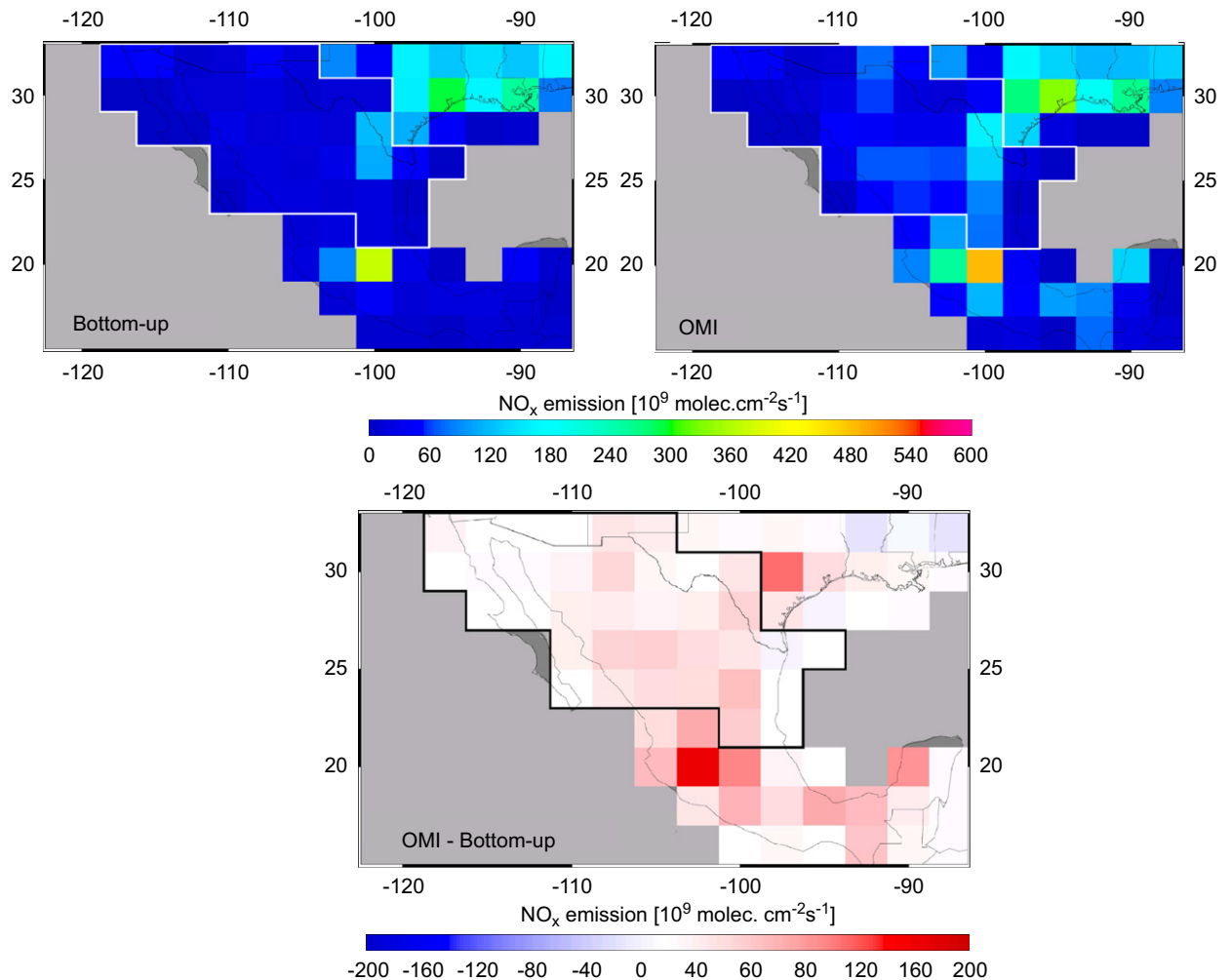


Fig. 7. Surface NO_x emissions at $2^\circ \times 2.5^\circ$ horizontal resolution for Mexico. The upper left panel shows BRAVO NO_x emissions over northern Mexico for 1999, indicated by the white line. The remaining grid cells over Mexico show GEIA emissions for March 1998. The upper right panel shows the top-down emission inventory for March 2006. Differences between the two inventories are shown on the bottom panel.

factors 3–5 than bottom-up emissions. Our results hold for March 2006, and appears to support these findings, although Bertram et al. (2005) have shown that discrepancies between bottom-up and top-down soil NO_x emissions may vary considerably from month to month due to difficulties in representing the timing of fertilizer application, and the influence of seasonally variable factors such as precipitation and temperature in the Yienger and Levy (1995) model.

For Mexico City and adjacent grid cell top-down NO_x emissions, we do not account for transport effects and apply Eq. (1). This is motivated by the unique topographical and meteorological situation of the Mexico City metropolitan area. Mexico City

lies in an elevated basin, confined by mountain ridges ($\sim 1000\text{m}$ higher than the basin) that, together with thermal inversions, are known to frequently prevent ventilation and trap pollutants within the Mexico City basin (e.g. Collins and Scott, 1993).

We find an overall emission strength of 17.4 Gg N for the Mexico City grid cell in March 2006, 27% higher than the 13.7 Gg N from the bottom-up (shown in Fig. 7). Toenges-Schüller et al. (2006) and Martin et al. (2003) show annual NO_x emissions of $71\text{--}94\text{ Gg N}$ (2000) and $106\text{--}118\text{ Gg N}$ (1997) for their Mexico City grid cells, compared to 205 Gg N if we assume that our estimate for March holds for the complete year. Tropospheric NO_2 columns have

Table 2
NO_x emissions for March 2006 in Mexico

Source	Emissions in Gg N			
	Northern Mexico ^a	Mexico City ^b	Southern Mexico	Mexico
Anthropogenic	18.2 ^c	13.3 ^d	14.7 ^d	46.2
Soil ^e	6.8	0.3	3.8	10.9
Biomass burning ^f	0.3	0.1	1.6	2.0
Total bottom-up	25.3	13.7	20.1	59.1
Top-down ^g	50.0	17.4	46.4	113.8

^aNorthern Mexico is defined as the domain of the BRAVO emission inventory, shown as the region enclosed by the solid line in Fig. 7.

^bMexico City refers to the grid cell in which Mexico City is located. Apart from Mexico City, this grid cell also contains the sizable cities of Toluca, Cuernavaca, and Morelia.

^cBottom-up NO_x emissions (BRAVO) are for 1999 (Kuhns et al., 2005).

^dBottom-up NO_x emissions (GEIA) are for March 1998 (Benkovitz et al., 1996; Bey et al., 2001).

^eComputed following Yienger and Levy (1995).

^fFrom GFED-2 for March 2004 (van der Werf et al., 2006).

^gTop-down emissions are estimated to be 26% uncertain; Section 3.

increased from March 1998 to March 2006 by 6% over the Mexico City grid cell (unpublished data from a trend analysis study by van der A et al., 2006a, consistent with Richter et al., 2005), too small to explain the differences between the March 2006 top-down and March 1999 bottom-up estimate. The comparison of NO₂ columns from OMI and in situ measurements in Fig. 3 suggests that top-down NO_x emissions over Mexico City may be too high, but the high top-down NO_x emissions over Mexico City could also be related to large numbers of fires observed in the Mexico City metropolitan area in March 2006, as reported by Fast et al. (2007), and consistent with 3× higher fire counts (FIRMS, 2006) in March 2006 than the March 2002–2005 average (Wiedinmyer, personal communication, 2007).

4. Summary and conclusions

The first phase of the INTEX-B campaign during March 2006 provided extensive in situ observations of NO₂ concentrations throughout the troposphere over the southern United States, the Gulf of Mexico, and the Mexican mainland including Mexico City. These included a number of aircraft spirals from 0.3 to 12 km altitude timed to coincide with overpasses of the Aura satellite and viewing scenes of the Ozone Monitoring Instrument (OMI) aboard Aura. We used these measurements to validate near-real time (NRT) OMI tropospheric NO₂ columns and subsequently exploit the OMI

NO₂ retrievals to put constraints on the sources of NO_x from the eastern United States and Mexico.

We found 21 coincidences between the tropospheric NO₂ columns inferred from the DC-8 LIF instrument and retrieved from OMI over a range of cloud-free (cloud radiance < 50%) conditions varying from the remote Gulf of Mexico to the heavily polluted Mexico City Metropole. For the subset of coincidences with small extrapolated fractions of the DC-8 column (< 30%), the two measurement techniques agree ($r^2 = 0.67$, slope 0.99, $n = 12$). For the complete set ($n = 21$), including the most uncertain DC-8 columns, we find that OMI observes on average higher NO₂ columns than inferred from the DC-8 ($r^2 = 0.79$, slope 1.4). The subset of measurements over the remote Gulf of Mexico indicates that OMI NRT columns in relatively clean situations ($< 1.0 \times 10^{15}$ mol cm⁻²) have a small low bias (0.6×10^{15} mol cm⁻²).

One limitation of the DC-8 validation flights is that they cannot probe the very lowest part (~300 m) of the planetary boundary layer. In order to avoid having to make assumptions on the amount of trace gas in the unobserved part, future satellite validation campaigns using aircraft measurements should attempt to provide as complete vertical sampling of the troposphere as possible. Horizontally, DC-8 validation spirals span multiple OMI satellite pixels, and the comparisons presented in our manuscript typically hold for footprints of hundreds of km². To validate individual OMI retrievals, reducing the spatial extent of the satellite spiral would be required. Alternatively, the

observed NO₂ values from that part of the spiral that spatially coincides with an individual pixel could be compared, but assumptions on the unobserved part of the lower troposphere (where gradients may exist) would be needed.

We used the validated OMI NO₂ columns to provide top-down constraints on surface NO_x emissions over the eastern United States and Mexico in March 2006. Top-down emissions from OMI over the eastern United States are lower than bottom-up NO_x emissions from the U.S. EPA National Emissions Inventory for 1999 (NEI99), particularly over the industrial Midwest where emissions by power utilities are concentrated. In contrast, top-down emissions are on average higher than NEI99 emissions over the northeastern U.S., where emissions from on-road vehicles are dominant. Minimizing differences between the top-down and bottom-up emissions with a SVD-technique, we find reductions of ~25% in power plant and industry emissions together with increases of 30% for on-road and 8% for non-road vehicle emissions for the 1999–2006 period assuming the inventory to be correct for 1999. The top-down estimate of 0.465 TgN in March 2006 is 3.2% higher than the NEI99 inventory of EPA (March 1999) over the eastern United States, indicating that the increase in vehicular emissions is countervailing the decrease in power plant and industry emissions. These findings, albeit with uncertainties of 20%, are consistent with reductions in stationary sources between March 1999 and March 2004 observed on smokestacks (G. Frost, personal communication, 2006), and increases in NO_x emissions from on-road vehicles inferred from surface observations and emission inventories (Parrish, 2006).

Emission estimates from OMI for Mexico in March 2006 are a factor 2.0 ± 0.5 higher than bottom-up NO_x emissions. Comparing the bottom-up inventory to the recently released Mexican NEI99 inventory shows that the latter is higher by a factor 1.6–1.8. There is little evidence that increases in NO_x emissions from 1999 to 2006 throughout Mexico underlie these differences (Richter et al., 2005). The inferred increases in Mexican NO_x emissions show reasonable spatial correlation ($r^2 = 0.46$, $n = 56$) with soil NO_x emissions (Yienger and Levy, 1995). Since biomass burning was average in March 2006 (except for the Mexico City region) and contributes less than 5% to overall NO_x emissions, higher top-down NO_x emission estimates over Mexico are supportive

of the large underestimate in soil NO_x emissions that have been found in studies by Jaeglé et al. (2005) (factor 2–3) and Wang et al. (2007a), at least for March 2006. Over Mexico City, we find our top-down estimate to be higher by a factor 1.3, possibly related to above-average NO_x emissions from biomass burning in that area.

Appendix A. GEOS-Chem

We simulate tropospheric NO₂ columns with the $2.5^\circ \times 2.0^\circ$ version of the global three-dimensional chemical transport model GEOS-Chem (v7-04-06; www-as.harvard.edu/chemistry/trop/geos/index.html) (Bey et al., 2001; Park et al., 2004). GEOS-Chem has been used for inverse modelling of NO_x emissions with satellite data by Martin et al. (2003), Jaeglé et al. (2005) and Martin et al. (2006), and we refer to these studies for more detailed descriptions of the model.

GEOS-Chem is driven by assimilated meteorological fields (GEOS-4) from the NASA Global Modeling Assimilation Office (GMAO) that are provided every 6 h (3 h for surface fields and mixing depths). There are 55 vertical sigma levels, extending up from the surface to 0.01 hPa. Below 2 km, there are five levels. Chemical simulations are conducted at 30 vertical levels (stratospheric levels have been grouped) for March 2006 and have been initialized with an 8-month spin-up simulation.

GEOS-Chem uses national emission inventories for anthropogenic NO_x where available, and default values from the GEIA (Benkovitz et al., 1996) scaled by energy statistics to 1998 where not (Bey et al., 2001). Emissions in the United States are taken from the EPA 1999 National Emissions Inventory (NEI99, U.S. Environmental Protection Agency, 2001) with time-of-day and day-of-week variations based on Environmental Protection Agency (1989). Over northern Mexico, emissions are from the BRAVO inventory (Kuhns et al., 2005). Monthly mean biomass burning estimates are derived from satellite-observed fire counts combined with emission factors from Andreae and Merlet (2001) as described in van der Werf et al. (2006). Soil NO_x emissions are computed following Yienger and Levy (1995) with canopy reduction factors described by Wang et al. (1998).

GEOS-Chem includes a detailed simulation of O₃–NO_x–CO–hydrocarbon–aerosol chemistry. The aerosol and gaseous simulations are coupled through the formation of sulphate and nitrate, the

$\text{HNO}_3/\text{NO}_3^-$ partitioning of total inorganic nitrate, and the uptake of N_2O_5 by aerosols in the presence of water vapor (the main night-time sink of NO_x , modelled as in Evans and Jacob, 2005). The chemical timestep in the model is 1 h, short enough to simulate diurnal photochemical changes in NO_2 concentrations for comparison to OMI (overpass time of $\approx 13:30$ local time).

References

- Acarreta, J.R., De Haan, J.F., Stammes, P., 2004. Cloud pressure retrieval using the $\text{O}_2\text{-O}_2$ absorption band at 477 nm. *Journal of Geophysical Research* 109, D05204.
- Andreae, M.O., Merlet, P., 2001. Emission of trace gases and aerosols from biomass burning. *Global Biogeochemical Cycles* 15, 955–966.
- Benkovitz, C.M., Scholtz, M.T., Pacyna, J., Tarrason, L., Dignon, J., Voldner, E.C., Spiro, P.A., Logan, J.A., Graedel, T.E., 1996. Global gridded inventories for anthropogenic emissions of sulphur and nitrogen. *Journal of Geophysical Research* 101, 29239–29253.
- Bertram, T.H., Heckel, A., Richter, A., Burrows, J.P., Cohen, R.C., 2005. Satellite measurements of daily variations in soil NO_x emissions. *Geophysical Research Letters* 32, L24812.
- Bey, I., Jacob, D.J., Yantosca, R.M., Logan, J.A., Field, B.D., Fiore, A.M., Li, Q., Liu, H.Y., Mickley, L.J., Schultz, M.G., 2001. *Journal of Geophysical Research* 106 (D9), 23073–23095.
- Boersma, K.F., Bucsela, E.J., Brinkma, E.J., Gleason, J.F., 2002. NO_2 . In: Chance, K. (Ed.), OMI Algorithm Theoretical Basis Document, OMI Trace Gas Algorithms, vol. 4. ATB-OMI-04, Version 2.0, NASA Distributed Active Archive Centers, Greenbelt, MD, August 2002, pp. 13–36.
- Boersma, K.F., Eskes, H.J., Brinkma, E.J., 2004. Error analysis for tropospheric NO_2 retrieval from space. *Journal of Geophysical Research* 109, D04311.
- Boersma, K.F., Eskes, H.J., Veefkind, J.P., Brinkma, E.J., van der A, R.J., et al., 2007. Near-real time retrieval of tropospheric NO_2 from OMI. *Atmospheric Chemistry and Physics* 7, 2103–2118.
- Boersma, K.F., Jacob, D.J., Eskes, H.J., Pinder, R.W., Wang, J., van der A, R.J., 2008. Intercomparison of SCIAMACHY and OMI tropospheric NO_2 columns: observing the diurnal evolution of chemistry and emissions from space. *Journal of Geophysical Research*, doi:10.1029/2007JD008816, in press.
- Brinkma, E.J., et al., 2008. The 2005 and 2006 DANDELIONS BO2 and aerosol intercomparison campaigns. *Journal of Geophysical Research*, accepted for publication, doi:10.1029/2007JD008808.
- Bucsela, E.J., Celarier, E.A., Wenig, M.O., Gleason, J.F., Veefkind, J.P., Boersma, K.F., Brinkma, E.J., 2006. Algorithm for NO_2 vertical column retrieval from the Ozone Monitoring Instrument. *IEEE Transactions on Geoscience and Remote Sensing* 44 (5), 1245–1258 (special issue on the EOS Aura Mission).
- Bucsela, E.J., Perring, A.E., Cohen, R.C., Boersma, K.F., Wenig, M.O., et al., 2008. A comparison of NO_2 in situ aircraft measurements with data from the Ozone Monitoring Instrument. *Journal of Geophysical Research*, accepted for publication.
- Clarke, M.R.B., 1980. The reduced major axis of a bivariate sample. *Biometrika* 67 (2), 441–446.
- Cleary, P.A., Wooldridge, P.J., Cohen, R.C., 2002. Laser-induced fluorescence detection of atmospheric NO_2 using a commercial diode laser and a supersonic expansion. *Applied Optics* 41 (33), 6950–6956.
- Collins, C.O., Scott, S.L., 1993. Air pollution in the valley of Mexico. *The Geographical Review* 2, 119–133.
- Day, D.A., Wooldridge, P.J., Dillon, M.B., Thornton, J.A., Cohen, R.C., 2002. A thermal dissociation laser-induced fluorescence instrument for in-situ detection of NO_2 , peroxy nitrates, alkyl nitrates, and HNO_3 . *Journal of Geophysical Research* 107, 4046.
- Environmental Protection Agency, 1989. The 1985 NAPAP emission inventory (version 2): development of the annual data and modeler's tapes. EPA-600/7-89-012a, Research Triangle Park, NC.
- Environmental Protection Agency, 2006. Executive summary. Mexico's National Emissions Inventory, 1999 (www.epa.gov/ttn/chieff/net/mexico.html), 2006.
- Evans, M.J., Jacob, D.J., 2005. Impact of new laboratory studies of N_2O_5 hydrolysis on global model budgets of tropospheric nitrogen oxides, ozone, and OH. *Geophysical Research Letters* 32, L09813.
- Fast, J.D., de Foy, B., Acevedo Rosas, F., Caetano, E., Carmichael, G., et al., 2007. A meteorological overview of the MILAGRO field campaigns. *Atmospheric Chemistry and Physics* 7, 2233–2257.
- Fire Information for Resource Management System, 2006 (<http://maps.geog.umd.edu/firms/shapes.htm>).
- Frost, G.J., et al., 2006. Effects of changing power plant NO_x emissions on ozone in the eastern United States: proof of concept. *Journal of Geophysical Research* 111, D12306.
- Harley, R.A., Marr, L.C., Lehner, J.K., Giddings, S.N., 2005. Changes in motor vehicle emissions on diurnal to decadal time scales and effects on atmospheric composition. *Environmental Science and Technology* 39, 5356–5362.
- Heland, J., Schlager, H., Richter, A., Burrows, J.P., 2002. First comparison of tropospheric NO_2 column densities retrieved from GOME measurements and in situ aircraft profile measurements. *Geophysical Research Letters* 29, 44.
- Herman, J.R., Celarier, E.A., 1997. Earth surface reflectivity climatology at 340–380 nm from TOMS data. *Journal of Geophysical Research* 102, 28003–28011.
- Hudman, R.C., Jacob, D.J., Turquety, S., Leibensperger, E.M., Murray, L.T., et al., 2007. Surface and lightning sources of nitrogen oxides in the United States: magnitudes, chemical evolution, and outflow. *Journal of Geophysical Research* 112, D12S05.
- Jaeglé, L., Steinberger, L., Martin, R.V., Chance, K., 2005. Global partitioning of NO_x sources using satellite observations: relative roles of fossil fuel combustion, biomass burning and soil emissions. *Faraday Discussion* 130, 407–423.
- Kim, S.-W., Heckel, A., McKeen, S.A., Frost, G.J., Hsie, E.-Y., Trainer, M.K., Richter, A., Burrows, J.P., Peckham, S.E., Grell, G.A., 2006. Satellite-observed U.S. power plant NO_x emission reductions and their impact on air quality. *Geophysical Research Letters* 33 (22), L22812.
- Koelmeijer, R.B.A., Stammes, P., Hovenier, J.W., de Haan, J.F., 2001. A fast method for retrieval of cloud parameters

- using oxygen A-band measurements from the Global Ozone Monitoring Instrument. *Journal of Geophysical Research* 106, 3475–3490.
- Koelemeijer, R.B.A., de Haan, J.F., Stammes, P., 2003. A database of spectral surface reflectivity in the range 335–772 nm derived from 5.5 years of GOME observations. *Journal of Geophysical Research* 108 (D2), 4070.
- Kuhns, H., Knipping, E.M., Vukovich, J.M., 2005. Development of a United States–Mexico Emissions Inventory for the Big Bend Regional Aerosol and Visibility Observational (BRAVO) Study. *Journal of the Air and Waste Management Association* 55, 677–692.
- Levelt, P.F., van den Oord, G.H.J., Dobber, M.R., Mälkki, A., Visser, H., de Vries, J., Stammes, P., Lundell, J.O.V., Saari, H., 2006. The Ozone Monitoring Instrument. *IEEE Transactions on Geoscience and Remote Sensing* 44 (5), 1093–1101.
- Li, Q.B., Jacob, D.J., Yantosca, R.M., Munger, J.W., Parrish, D.D., 2004. Export of NO_y from the North American boundary layer: reconciling aircraft observations and global model budgets. *Journal of Geophysical Research* 109, D02313.
- Martin, R.V., Chance, K., Jacob, D.J., Kurosu, T.P., Spurr, R.J.D., Bucsela, E., Gleason, J.F., Palmer, P.I., Bey, I., Fiore, A.M., Li, Q., Yantosca, R.M., Koelemeijer, R.B.A., 2002. An improved retrieval of tropospheric nitrogen dioxide from GOME. *Journal of Geophysical Research* 107 (D20), 4437.
- Martin, R.V., Jacob, D.J., Chance, K.V., Kurosu, T.P., Palmer, P.I., Evans, M.J., 2003. Global inventory of nitrogen dioxide emissions constrained by space-based observations of NO₂ columns. *Journal of Geophysical Research* 108, 4537.
- Martin, R.V., Parrish, D.D., Ryerson, T.B., Nicks Jr., D.K., Chance, K., Kurosu, T.P., Jacob, D.J., Sturges, E.D., Fried, A., Wert, B.P., 2004. Evaluation of GOME satellite measurements of tropospheric NO₂ and HCHO using regional data from aircraft campaigns in the southeastern United States. *Journal of Geophysical Research* 109, D24307.
- Martin, R.V., Sioris, C.E., Chance, K., Ryerson, T.B., Bertram, T.H., Wooldridge, P.J., Cohen, R.C., Neuman, J.A., Swanson, A., Flocke, F.M., 2006. Evaluation of space-based constraints on global nitrogen oxide emissions with regional aircraft measurements over and downwind of eastern North America. *Journal of Geophysical Research* 111, D15308.
- Ordóñez, C., Richter, A., Steinbacher, M., Zellweger, C., Nüß, H., Burrows, J.P., Prévôt, A.S.H., 2006. Comparison of 7 years of satellite-borne and ground-based tropospheric NO₂ measurements around Milan, Italy. *Journal of Geophysical Research* 111, D05310.
- Palmer, P.I., Jacob, D.J., Chance, K., Martin, R.V., Spurr, R.J.D., Kurosu, T.P., Bey, I., Yantosca, R., Fiore, A., Li, Q., 2001. Air-mass factor formulation for spectroscopic measurements from satellites: application to formaldehyde retrievals from the Global Ozone Monitoring Experiment. *Journal of Geophysical Research* 106, 14539–14550.
- Park, R.J., Jacob, D.J., Field, B.D., Yantosca, R.M., Chin, M., 2004. Natural and transboundary pollution influences on sulphate–nitrate–ammonium aerosols in the United States: implications for policy. *Journal of Geophysical Research* 109, D15204.
- Parrish, D.D., 2006. Critical evaluation of US on-road vehicle emission inventories. *Atmospheric Environment* 40, 2288–2300.
- Press, W.H., Flannery, B.P., Teukolsky, S.A., Vetterling, W.T., 1986. *Numerical Recipes*. Cambridge University Press, Cambridge ISBN 0-521-30811-9.
- Richter, A., Burrows, J.P., 2002. Retrieval of tropospheric NO₂ from GOME measurements. *Advances in Space Research* 29, 1673–1683.
- Richter, A., Burrows, J.P., Nüß, H., Granier, C., Niemeier, U., 2005. Significant increases in tropospheric nitrogen dioxide over China observed from space. *Nature* 437, 129–132.
- Schaub, D., Boersma, K.F., Kaiser, J.W., Weiss, A.K., Folini, D., Eskes, H.J., Buchmann, B., 2006. Comparison of GOME tropospheric NO₂ columns with NO₂ profiles deduced from ground-based in situ measurements. *Atmospheric Chemistry and Physics* 6, 3211–3229.
- Schaub, D., Brunner, D., Boersma, K.F., Keller, J., Folini, D., Buchmann, B., Berresheim, H., Staehelin, J., 2007. SCIAMACHY tropospheric NO₂ over Switzerland: estimates of NO_x lifetimes and impact of the complex Alpine topography on the retrieval. *Atmospheric Chemistry and Physics* 7, 5971–5987.
- Stammes, P., 2001. Spectral radiance modeling in the UV–Visible range. In: Smith, W.L., Timofeyev, Y.J. (Eds.), *IRS2000: Current Problems in Atmospheric Radiation*. A. Deepak, Hampton, VA, USA, pp. 385–388.
- Stavrakou, J., Müller, J.-F., 2006. Multi-year grid-based inversion of NO_x emissions in a global CTM. *Eos Transactions AGU*, vol. 87(52), Fall Meeting Supplement, Abstract A31B-0876.
- Thornton, J.A., Wooldridge, P.J., Cohen, R.C., 2000. Atmospheric NO₂: in situ laser-induced fluorescence detection at parts per trillion mixing ratios. *Analytical Chemistry* 72, 528–539.
- Thornton, J.A., Wooldridge, P.J., Cohen, R.C., Williams, E.J., Hereid, D.P., Fehsenfeld, F.C., Stutz, J., Alicke, B., 2003. Comparisons of in situ and long path measurements of NO₂ in urban plumes. *Journal of Geophysical Research* 108, 4496.
- Toenges-Schüller, N., Stein, O., Rohrer, F., Wahner, A., Richter, A., Burrows, J.P., Beirle, S., Wagner, T., Platt, U., Elvidge, C.D., 2006. Global distribution pattern of anthropogenic nitrogen oxide emissions: correlation analysis of satellite measurements and model calculations. *Journal of Geophysical Research* 111, D05312.
- United States Environmental Protection Agency (U.S. EPA), 2001. *National Air Quality and Emissions Trends Report, 1999*, EPA 454/R-01-004, Office of Air Quality Planning and Standards, Research Triangle Park, NC.
- van der A, R.J., Peters, D.H.M.U., Eskes, H., Boersma, K.F., Van Roozendaal, M., DeSmedt, I., Kelder, H.M., 2006a. Detection of the trend and seasonal variation in tropospheric NO₂ over China. *Journal of Geophysical Research* 111, D12317.
- van der A, R.J., Eskes, H.J., Van Roozendaal, M., DeSmedt, I., Blond, N., Boersma, K.F., Weiss, A., 2006b. Algorithm Document Tropospheric NO₂. TEM/AD1/001, De Bilt, the Netherlands, January 2006 (www.temis.nl/airpollution/no2.html).
- van der Werf, G.R., Randerson, J.T., Giglio, L., Collatz, G.J., Kasibhatla, P.S., Arellano, A.F., 2006. Interannual variability in global biomass burning emissions from 1997 and 2004. *Atmospheric Chemistry and Physics* 6, 3423–3441.
- van Noije, T.P.C., Eskes, H.J., Dentener, F.J., Stevenson, D.S., Ellingsen, K., et al., 2006. Multi-model ensemble simulations

- of tropospheric NO₂ compared with GOME retrievals for the year 2000. *Atmospheric Chemistry and Physics* 6, 2943–2979.
- Wang, Y., Jacob, D.J., Logan, J.A., 1998. Global simulation of tropospheric O₃–NO_x–hydrocarbon chemistry: 1. Model formulation. *Journal of Geophysical Research* 103, 10713–10726.
- Wang, Y.X., McElroy, M.B., Wang, T., Palmer, P.I., 2004. Asian emissions of CO and NO_x: constraints from aircraft and Chinese station data. *Journal of Geophysical Research* 109, D24304.
- Wang, Y.X., McElroy, M.B., Martin, R.V., Streets, D.G., Zhiang, Q., Fu, T.-M., 2007a. Seasonal variability of NO_x emissions over east China constrained by satellite observations: implications for combustion and microbial sources. *Journal of Geophysical Research* 112, D06301.
- Wang, Y.X., McElroy, M.B., Boersma, K.F., Eskes, H.J., Veefkind, J.P., 2007b. Traffic restrictions associated with the Sino-African summit: reductions of NO_x detected from space. *Geophysical Research Letters* 34, L08814.
- Wenig, M.O., Cede, A.M., Bucsela, E.J., Celarier, E.A., Boersma, K.F., Veefkind, J.P., Brinksma, E.J., Gleason, J.F., Herman, J.R., 2008. Validation of OMI tropospheric NO₂ column densities using direct sun mode Brewer measurements at NASA Goddard Space Flight Center. *Journal of Geophysical Research*, accepted for publication.
- Yienger, J.J., Levy, H., 1995. Empirical model of global soil-biogenic NO_x emissions. *Journal of Geophysical Research* 100, 11447–11464.